

LA 45 COMPO: Headlight Mount Rework



Prepared by: Kalman Takacs
Sr. Field Service Engineer
Phone (256) 241-1243
Fax (256) 832-0930

Approved by: Dan Allen
Chief Engineer of Mfg. and Service Support

Property name and top bus number: LA 45CLFW 218000, 269000



Issue: Headlight bulb doesn't fit the mounting bracket (bucket) correctly.

Reason/ cause: Under investigation.

Solution: Modify the headlight mounting bracket per this work instruction.

LA 45 COMPO: Headlight Mount Rework



Number of affected buses: As required

Estimate repair hours/bus: 1 hour

Necessary parts (replace parts as required only):

8	8602-000-002	Menetes szem Threaded Insert	16	#10
7	05200-90005	Lapos rozsdam. alátét Washer	16	5
6	05020-90005	Rugós rozsdam. alátét Lock washer	16	5 K-2
5	270225	Df. kh. PHILLIPS romcsavar SCREW, PH, PHILLIPS, SS	16	#10
4	5030543	Távolsági Fényszóró HIGH BEAM	2	
3	5030544	Tompított Fényszóró LOW BEAM	2	
2	800-1783-002	Tompított Fényszóró Keret BUCKET LOW BEAM	2	
1	800-1783-001	Távolsági Fényszóró Keret BUCKET HIGH BEAM	2	
Tétel	Rajzszám vagy anyagszám	Megnevezés	Db	Méret
Item	DWG Number or Material Nr.	Description	Qty	Size

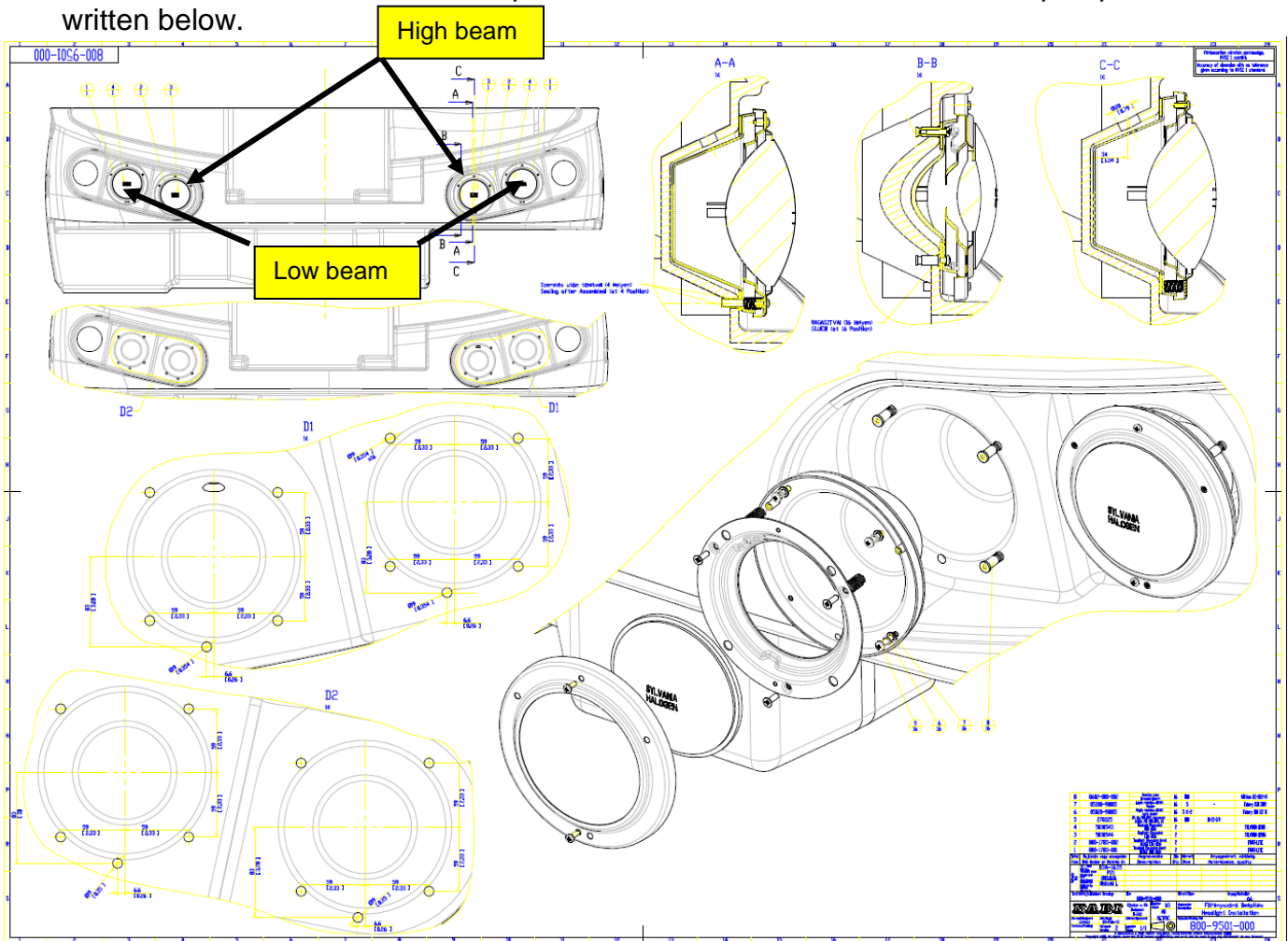
Necessary tools: Usual hand tools (wrenches, sockets, screwdrivers, etc.), 1/8" and 5/16" drill bits, drill, headlight template

LA 45 COMPO: Headlight Mount Rework



SAFETY PRECAUTIONS MUST BE FOLLOWED ACCORDING TO ACCEPTED INDUSTRY STANDARDS AND LOCAL/PROPERTY REQUIREMENTS.

1. Park the bus on a flat surface and apply the parking brake.
2. Inspect buses and check if the low and high beam bulbs are installed per the drawings below. If the location or the number of required bulbs are mixed then follow the repair procedure written below.



3. Remove headlight bezel.



LA 45 COMPO: Headlight Mount Rework



4. Remove headlight bulb assembly from its bracket.



5. Inspect the headlight mounting bracket (bucket) and replace as required. If bracket is in good condition (threads, tabs, etc.) then place and position the template to the mounting bracket as picture shows below.



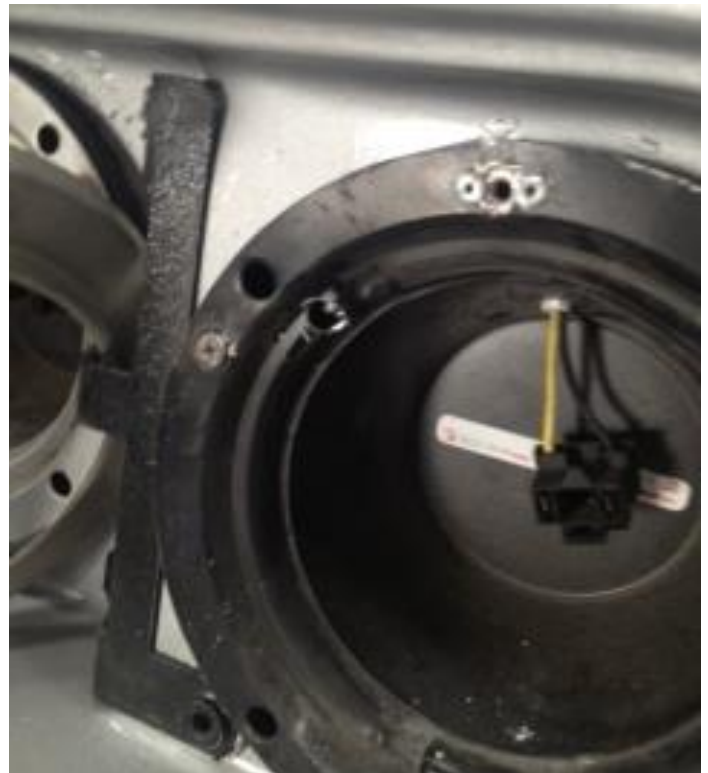
LA 45 COMPO: Headlight Mount Rework



6. Drill a pilot hole by using a 1/8" drill bit through the required hole: #1 mark is for low beam bulb and #2 mark is for high beam bulb.



7. Enlarge the hole by using a 5/16" drill bit.



LA 45 COMPO: Headlight Mount Rework



8. Place a 1" long self-adhesive foam piece beside the newly drilled hole.
9. Install the required bulb (see drawing on the 3rd page).
10. Reinstall headlight bezel.
11. Inspect and adjust headlights per NABI Maintenance Manual.
12. Check for completeness of work.
13. Remove all tools and unused parts from work area.
14. Record fleet #, mileages, date of completion and the name of the technician(s) who completed the work.