

NJT – Rear Bulkhead Seal



Prepared by: Dave Hancock
Senior Field Service Representative.
(862) 241-8959

Approved by: Dan Allen
Chief Engineer

Property name and Top bus number: 305000

Issue: Sealant and foam sealant not installed in some areas of the engine compartment .

Solution: Inspect and apply specified sealant and foam sealant to areas noted in this Work Instruction



NJT – Rear Bulkhead Seal



Effected buses: 1601 thru 1639

Estimate repair hours/bus: 1 hour

Necessary parts:

3M fire barrier, 2000+
3M Fire Block Foam,
Acetone,

NABI Part #: **75100-84856**,
NABI Part #: **NPN**,
NABI Part #: **NPN**,

1 tube / 4 buses,
1 can / 4 buses,
1 can / 40 buses,



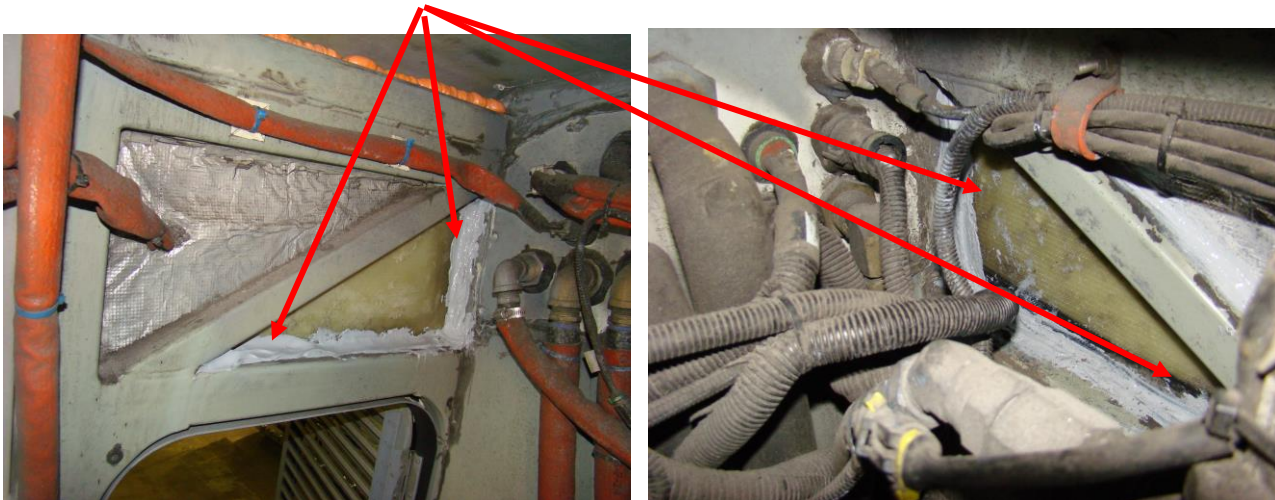
Necessary tools: Basic hand tools

NJT – Rear Bulkhead Seal

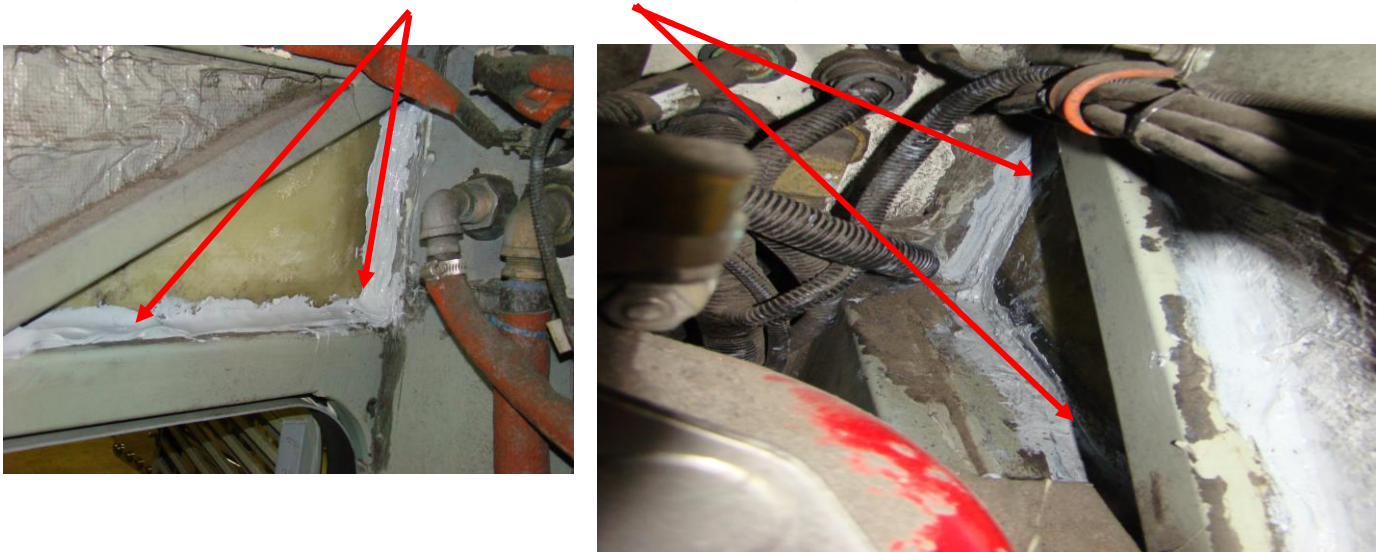


SAFETY PRECAUTIONS MUST BE FOLLOWED ACCORDING TO ACCEPTED INDUSTRY STANDARDS AND LOCAL/PROPERTY REQUIREMENTS.

1. Turn off the battery disconnect switches.
2. Open the rear attic door.
3. Inspect area between the roof corner panel and the structure:
Remove insulation and see if gap is exist between the structure and the roof corner panel. If gap exist (no calk present) then follow instruction below.



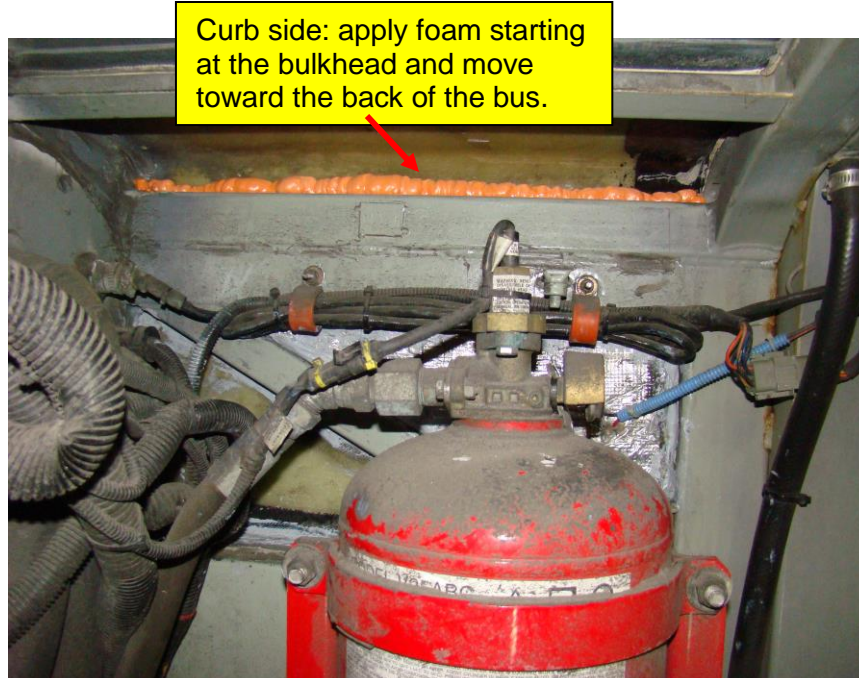
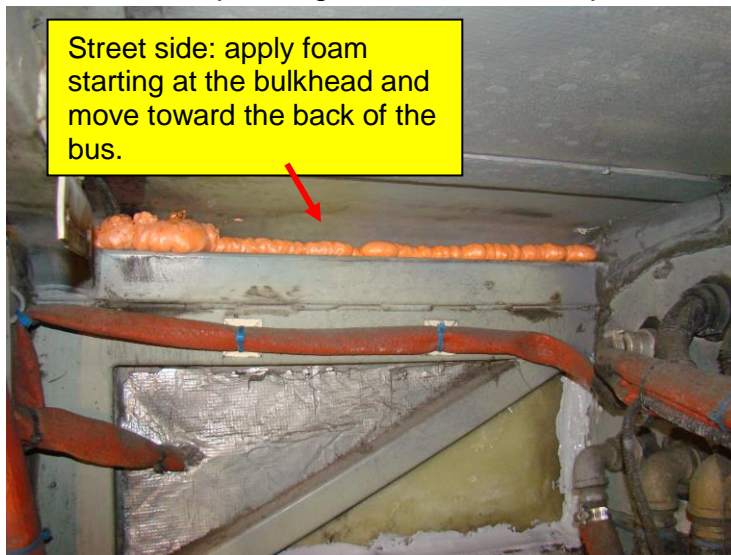
- Degrease area by using white color cloth soaked with acetone. Clean the surfaces between the structure and the fiberglass roof corner as much as possible. Push rag into gap with a flat screwdriver if required.
- Apply 3M Fire Dam 2000+ sealer into the gaps.



NJT – Rear Bulkhead Seal



Spray 3M Fire Block Foam behind the frame tubes (both curb and street sides) at the attic compartment. Orient the nozzle toward the bulkhead and move toward the back of the bus while continuously spraying the foam. The goal is to fill up the gap between the side of the upper horizontal tube and the roof corner. Do not overspray the foam. The foam is expanding 200% so wait couple seconds before applying more foam.



- After foam cures trim off excess foam. **Do not attempt to clean uncured foam!**
- Reinstall insulation.

NJT – Rear Bulkhead Seal



Final operation

4. Turn battery disconnect switches on.
5. Record bus number, mileage, date of completing and the name of the technician who completed the repair.
6. Close the attic compartment door.