



INSTRUCTION TO SERVICE

ITS: 5895	
SECTION:	292 Electrical Harnesses
WRITTEN BY:	K. Baziuk
SUBJECT:	Secure Rear Harness in Muffler Compartment.

ITS5895

THIS DOCUMENT AND THE CONTENTS DISCUSSED HEREIN ARE THE CONFIDENTIAL AND PROPRIETARY INFORMATION OF NEW FLYER INDUSTRIES CANADA ULC AND NEW FLYER OF AMERICA INC. AND ARE DISCLOSED BY NEW FLYER IN CONFIDENCE. THIS DOCUMENT AND THE CONTENTS HEREIN ARE NOT TO BE DISCLOSED BY THE INTENDED RECIPIENT WITHOUT THE PRIOR WRITTEN AUTHORIZATION OF NEW FLYER. ANY UNAUTHOIZED DISCLOSURE, REPRODUCTION OR OTHER DISTRIBUTION OF THIS DOCUMENT OR INFORMATION IS STRICTLY PROHIBITED AND MAY RESULT IN ACTION BEING TAKEN AGAINST THE PARTY MAKING THE UNAUTHORIZED DISCLOSURE. THIS DOCUMENT AND ALL COPIES HEREOF MUST BE RETURNED TO NEW FLYER UPON REQUEST.

PROCEDURE:

1. Turn the main battery disconnect switch to the “OFF” position.
2. Locate the RR CLR LPS XCELSIOR harness assembly as shown in Figure 1.

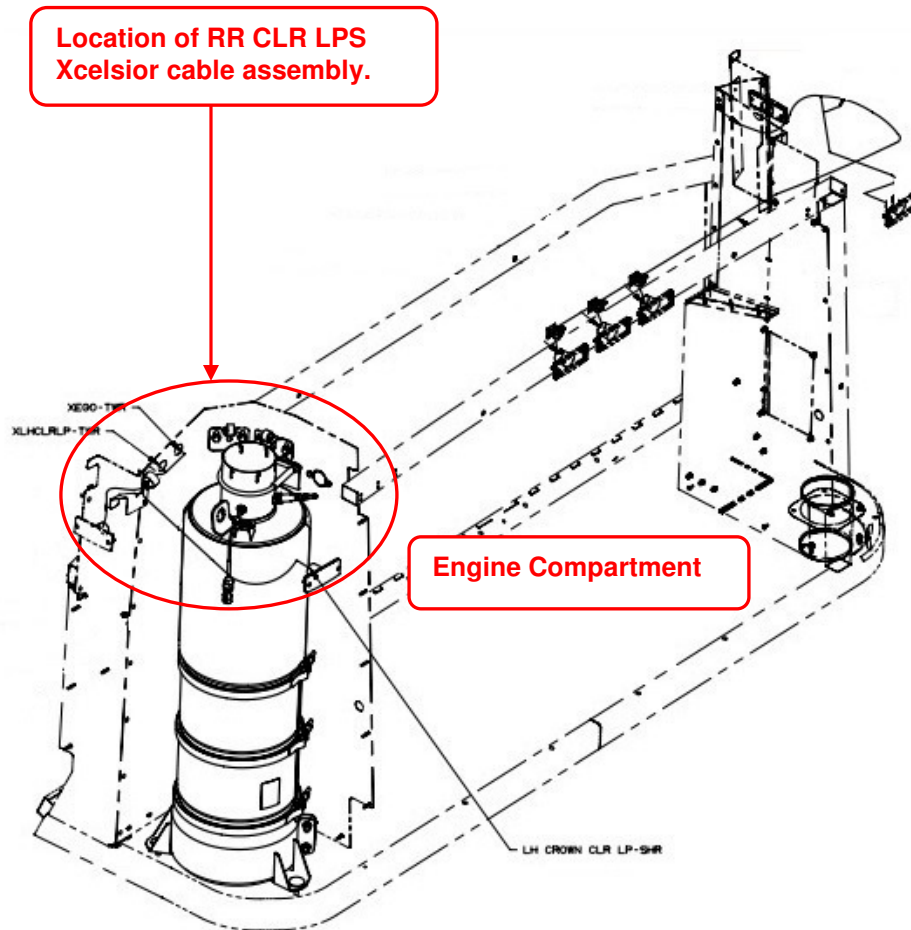


Figure 1: Location of Cable Assembly.

3. Locate existing tapping screw into firewall. See Figure 2.
4. Install P-Clamp PN: 092582 Qty 1 and 10-24 Screw PN: 34S0016 Qty 1, into firewall assembly, See Figure 2.

NOTE: Ensure connector and any slack is placed forward of door hinge, away from muffler compartment.

5. Secure harness assembly and tighten all clamps. Refer to figure 4 and 5.
6. Turn the main battery disconnect switch to the “ON” position

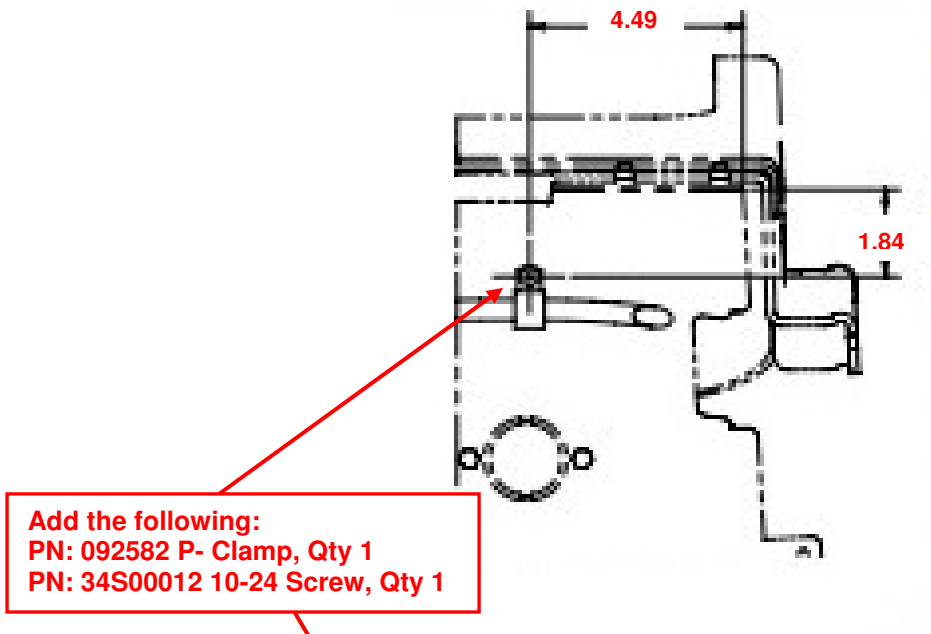


Figure 2: Location of P-Clamp to be added.

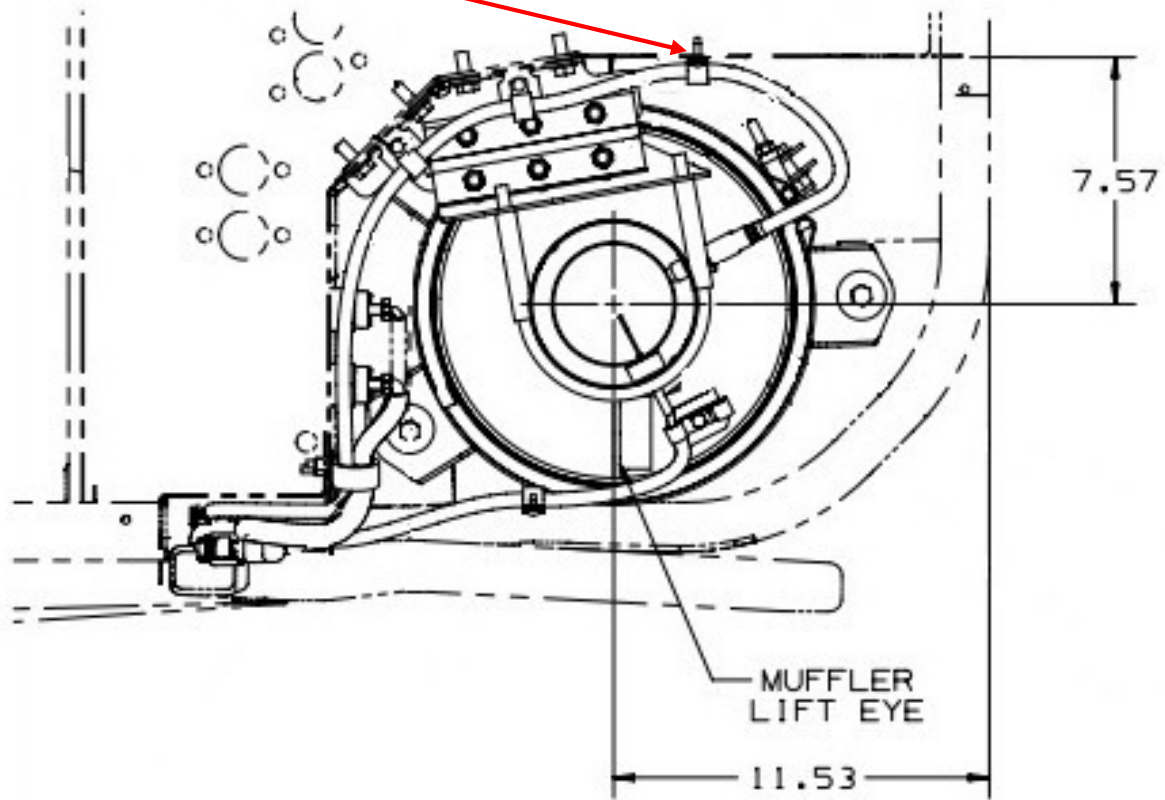


Figure 3: Final assembly of harness.

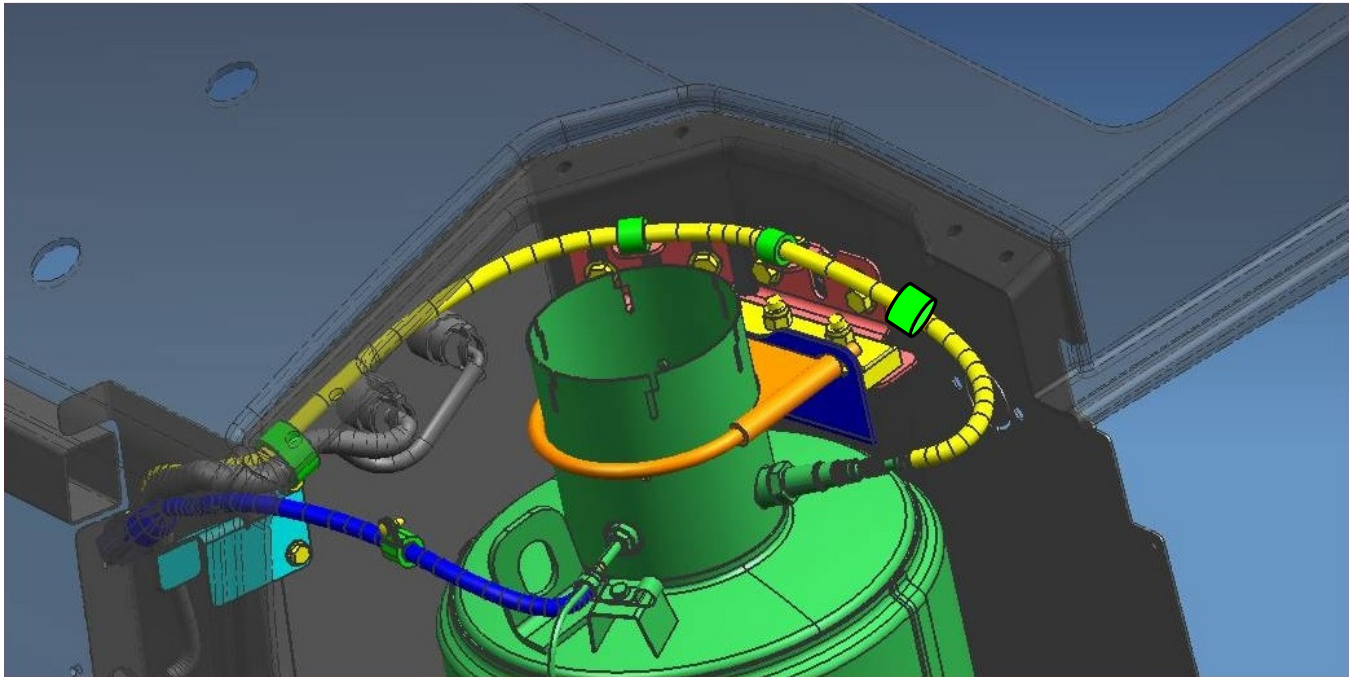


Figure 4: Final assembly of harness.

LABOUR ESTIMATE

	Operation	Men	Hours	Labour Time M X HR
1	Secure Rear Harness in Muffler Compartment.	1	0.25	0.25

PARTS REQUIRED

Item	Part Number	Description	Qty. per Coach	Units	Notes
1	092582	CLAMP-P 0.500	1	EA	
2	34S00012	SCREW-NO 10-24 X 0.75	1	EA	

SPECIAL TOOLS REQUIRED

Item	Part Number	Description	Qty. per Coach	Units	Notes
		NO SPECIAL TOOLS REQUIRED			