

REFERENCE:	Nova Bus Manuals
SECTION:	16: Electrical system
RS N°:	MQR 7621-594
EFFECTIVE IN PROD.:	L729 (2013MR)

APPLICATION DEADLINE: 2015MR01
CLAIM REFERENCE NUMBER: WB-3058

SUBJECT:	Bottom plate of the pivoting battery tray.
JUSTIFICATION:	The bottom plate may detach from the pivoting battery tray frame.

LEVEL	DESCRIPTION	DIRECT CHARGES		TIME
		LABOUR	MATERIAL	
1	Inspect the bottom plate of the pivoting battery tray.	Nova Bus	–	5 min
2	Weld the bottom plate to the pivoting battery tray frame.	Nova Bus	Client	1 hour

MATERIAL

QTY	PART N°	REV.	DESCRIPTION	REPLACES PART N°
LEVEL 1				
–	–	–	–	–
LEVEL 2				
–	–	–	–	–

DISPOSAL OF PARTS

REMOVED PARTS ARE:	DISCARDED	RETAINED	
	–	–	–

REVISION HISTORY

REV.	DATE	CHANGE DESCRIPTION	WRITTEN BY
NR	2014FE11	Initial release	Bertrand Plouffe

CLIENT	ORDER	ROAD NUMBER		VIN (2NVY/4RKY...)		QTY
		FROM	TO	FROM	TO	
New York City Transit - New York	L608	8000	8014	L82U6B4000047	L82U0B4000061	15
New York City Transit - New York	L620	8015	8074	L82U2B4000062	L82U7B4000123	60
New York City Transit - New York	L621	8075	8089	L82U9B4000124	L82U9B4000138	15
New York City Transit - New York	L643	5895	5895	S92U1B4000143	S92U1B4000143	1
New York City Transit - New York	L670	5770	5894	S92U4C4500024	S92U3B4000242	125
New York City Transit - New York	L681	5896	5283	S92U2C4500023	S92U9C4500195	122
New York City Transit - New York	L692	5284	5363	S92U3C4500158	S92U3D4500274	80
Toronto Transit Commission - TTC - Ontario	L729	9000	9000	S92U9D3000905	S92U9D3000905	1
Walt Disney World - Florida	L763	—	—	S92U0D3001019	S92U7D3001020	2
Walt Disney World - Florida	L763	—	—	S92U0D3001022	S92U2D3001023	2

**WARNING**

Follow your internal safety procedures.

PROCEDURE**LEVEL 1: INSPECT THE BOTTOM PLATE OF THE PIVOTING BATTERY TRAY**

- 1.1. Locate the battery compartment, on the rear street side of the vehicle. See Figure 1. Open the compartment access door.

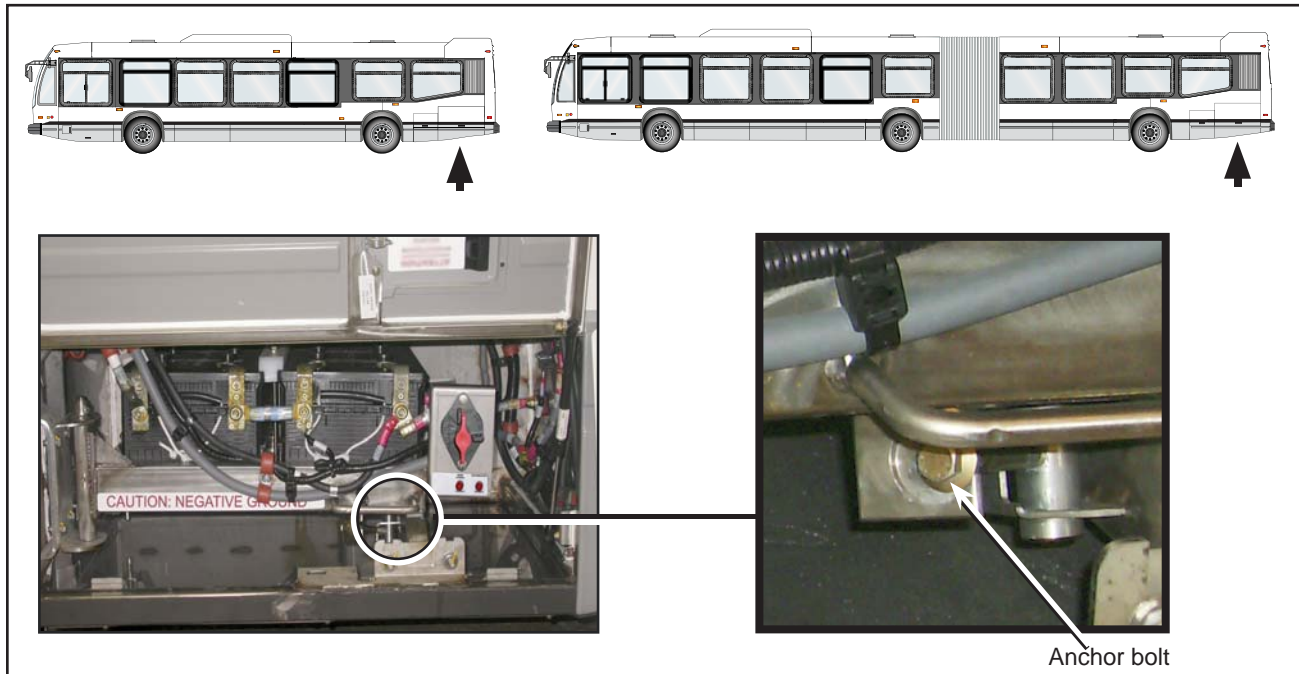


Figure 1 - Typical Battery Compartment

- 1.2. Release the anchor bolt of the pivoting battery tray. See Figure 1. Swing the tray out.
- 1.3. Inspect the weld quality all around the pivoting tray frame, under the bottom plate. See Figure 2.



Figure 2 - Inspecting the Bottom Plate

- 1.4. If the weld meets quality standards, swing the tray back into the battery compartment. Tighten the tray anchor bolt and close the battery compartment access door. The vehicle may returned to service.
- 1.5. If the weld does not meet quality standards or if the weld bead is damaged, proceed with level 2.

LEVEL 2: WELD THE BOTTOM PLATE TO THE PIVOTING BATTERY TRAY FRAME

- 2.1. Disconnect the batteries in accordance with section 16: **ELECTRICAL SYSTEM** in the Nova Bus maintenance manual.
- 2.2. Remove all the cables from the batteries and the pivoting battery tray.
- 2.3. Remove the battery retainer. See Figure 3.

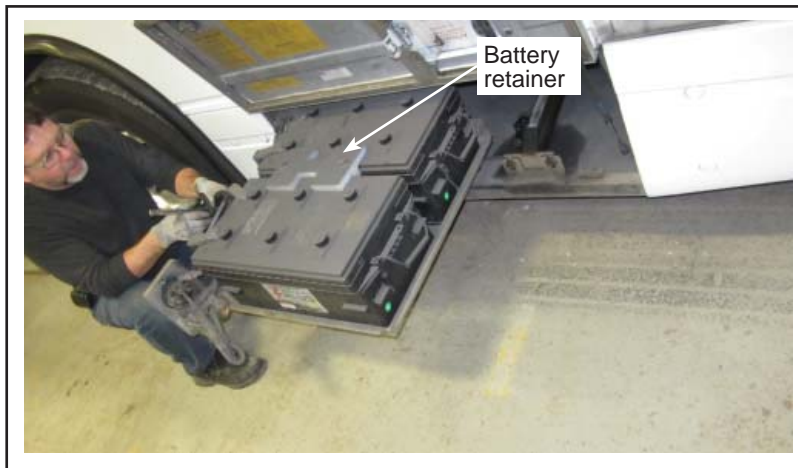


Figure 3 - Pivoting Battery Tray

- 2.4. Remove the batteries from the pivoting battery tray.
- 2.5. Remove the tray hinge screws. See Figure 4. Retain the hardware.



Figure 4 - Pivoting Tray Hinge

- 2.6. Remove the tray from the battery compartment. See Figure 5.



Figure 5 - Pivoting Tray Removed from the Battery Compartment

- 2.7. Clean the tray.
- 2.8. Inspect the weld bead between the bottom plate and the pivoting tray frame. Close any gaps between the plate and the frame.
- 2.9. Make three small welds approximately two inches long on both sides of the pivoting tray frame. Make the welds on the inside of the tray. See Figure 6.

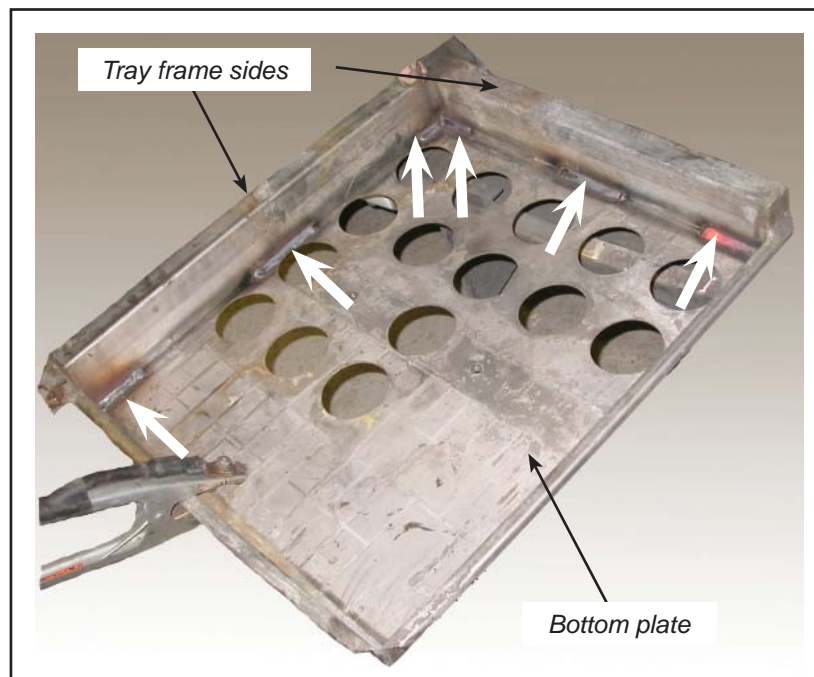


Figure 6 - Three Bead Welds per Pivoting Tray Frame Side (Six in All)

- 2.10. Weld the bottom plate completely to both sides of the tray frame. See Figure 7.

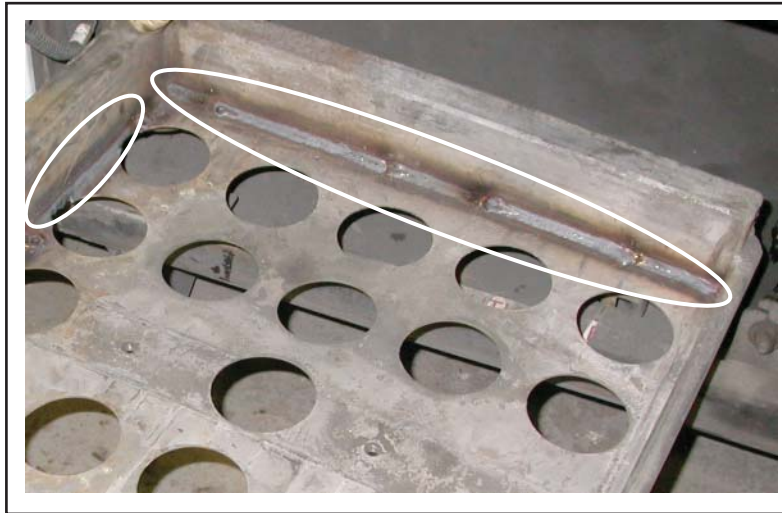


Figure 7 - Bottom Plate Completely Welded to the Tray Frame

- 2.11. Let the pivoting tray cool.
- 2.12. Install the pivoting tray in the battery compartment. Use the retained hardware. Apply Never Seeze lubricant, or equivalent, to the screws and nuts.
- 2.13. Torque the hinge screws to the specified value. See Figure 4.
- 2.14. Install the batteries in the pivoting tray.
- 2.15. Install the battery retainer.
- 2.16. Route the cables in accordance with section 16: **ELECTRICAL SYSTEM** in the Nova Bus maintenance manual.
- 2.17. Connect the batteries in accordance with section 16: **ELECTRICAL SYSTEM** in the Nova Bus maintenance manual.
- 2.18. Torque the battery connections in accordance with section 16: **ELECTRICAL SYSTEM** in the Nova Bus maintenance manual.
- 2.19. Swing the pivoting tray back into the battery compartment.
- 2.20. Secure the pivoting tray with the anchor bolt. See Figure 1.
- 2.21. Close the battery compartment door.
- 2.22. The vehicle may be returned to service.

❖