



GROUP  
ELE

MODEL  
2014MY  
Sorento (XMa)

NUMBER  
057 (Rev 3, 09/11/2014)

DATE  
January 2014

## TECHNICAL SERVICE BULLETIN

SUBJECT: SERVICE ACTION: BCM UPGRADE - IPM LOGIC  
IMPROVEMENT (SA163A)

### \* NOTICE

This bulletin has been revised to include additional information. New/revised sections of this bulletin are indicated by a black bar in the margin area.

This bulletin provides information related to a software upgrade for the Instrument Panel Module (IPM) of some 2014MY Sorento (XMa) vehicles, produced from January 22, 2013 through November 15, 2013 and equipped with a Power Tail Gate (PTG), which may exhibit an intermittent parasitic draw of up to 400mA. To prevent and/or correct this condition, the BCM should be reprogrammed using the GDS download, as described in this bulletin. Kia is requesting the completion of this Service Action on all affected vehicles. For confirmation that the latest reflash has been done to a vehicle you are working on, verify ROM ID using the tables in this TSB.



Global Diagnostic System (GDS)

### \* NOTICE

A Service Action is a repair program without customer notification that is performed during the warranty period. Any dealer requesting to perform this repair outside the warranty period will require DPSM approval.

Repair status for a VIN is provided on WebDCS (Service> Warranty Coverage> Warranty Coverage Inquiry> Campaign Information). Not completed Recall / Service Action reports are available on WebDCS (Consumer Affairs> Not Completed Recall> Recall VIN> Select Report), which includes a list of affected vehicles.

This issue number is SA163A.

File Under: <ELECTRICAL>

Circulate To:  General Manager  Service Manager  Parts Manager

Service Advisor(s)  Technician(s)  Body Shop Manager  Fleet Repair

SUBJECT:

## SERVICE ACTION: BCM UPGRADE - IPM LOGIC IMPROVEMENT (SA163A)

### ECM Upgrade Procedure:

To correct this condition, the BCM should be reprogrammed using the GDS download as described in this bulletin.

UPGRADE EVENT NAME
225.XM FL IPM LOGIC IMPROVEMENT

### \* NOTICE

- A fully charged battery is necessary before the upgrade can take place. It is recommended that the Midtronics GR8-1299 system be used in ECM mode during charging. **DO NOT** connect any other battery charger to the vehicle during the upgrade.
- This upgrade must be performed with the ignition key in the OFF position.
- Make sure all vehicle doors are closed.
- Be careful not to disconnect any cables connected to the vehicle or GDS during the upgrade procedure.
- **DO NOT** start the engine during the upgrade.

### ROM ID INFORMATION TABLES:

#### Upgrade Event #225

MODEL	IPM P/N	ROM ID	
		PREVIOUS	NEW
Sorento (XMa)	954001U220	954001U2202010	954001U2202110
	954001U230	954001U2302010	954001U2302110
	954001U240	954001U2402010	954001U2402110
	954001U250	954001U2502010	954001U2502110

**To verify the vehicle is affected, be sure to check the Calibration Identification of the vehicle's BCM ROM ID and reference the Information Table as necessary.**

1. Open the hood, disconnect the hood switch and connect the Midtronics charger to the battery.
2. Turn the ignition switch to the **OFF** position.
3. Connect the power supply cable to the GDS.

### \* NOTICE

**If attempting to perform the upgrade with the power supply cable disconnected from the GDS, be sure to check that the GDS is fully charged before performing the upgrade. If the GDS is not fully charged, the upgrade may not occur. Therefore, it is strongly recommended that the power supply connector be connected to the GDS.**

SUBJECT:

# SERVICE ACTION: BCM UPGRADE - IPM LOGIC IMPROVEMENT (SA163A)

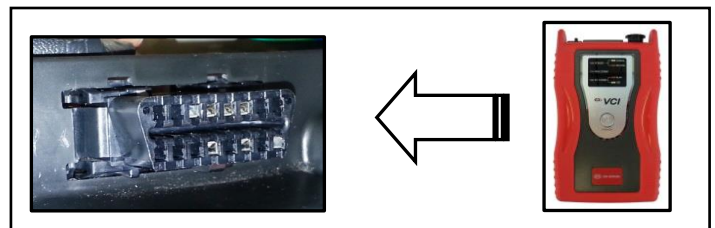
- Connect the USB cable between the VCI and the GDS.

## \* NOTICE

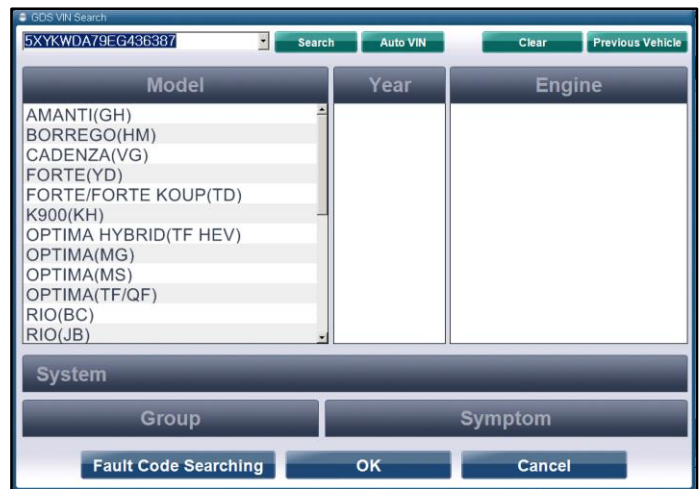
When performing the ECU upgrade using the GDS, wireless communication between the VCI and GDS is not available. Therefore, be sure to connect the USB cable between the VCI and the GDS.

- Connect the Main 16-pin DLC cable (GHDM – 241000) to the VCI.

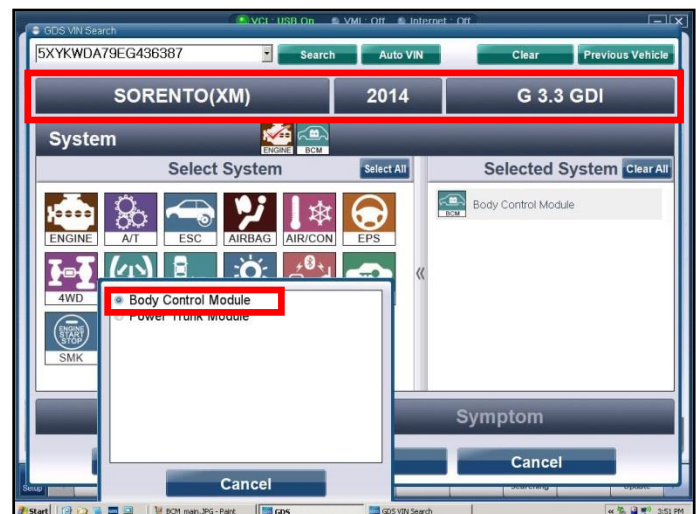
- Connect the Main 16-pin DLC cable (GHDM – 241000) to the OBD-II connector, located under the driver's side of the instrument panel.



- With the ignition key OFF, turn ON the VCI and GDS and manually input the VIN into the search box. Then, click the **Search** button.



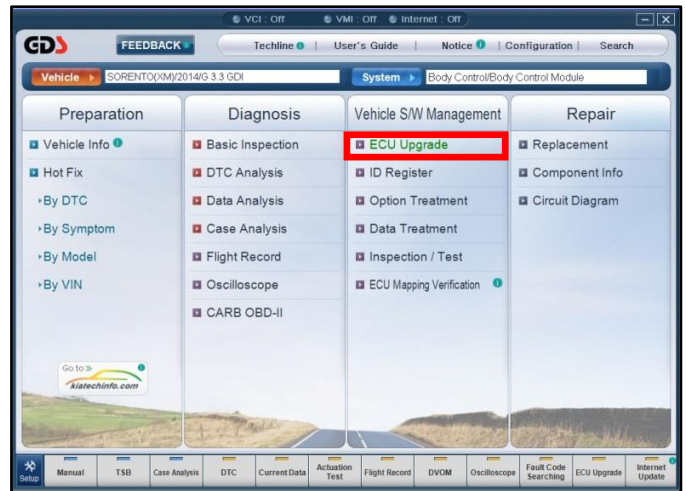
- At the GDS System Screen, select **BCM**. Then, select **Body Control Module** from the pop-up window and click **OK**.



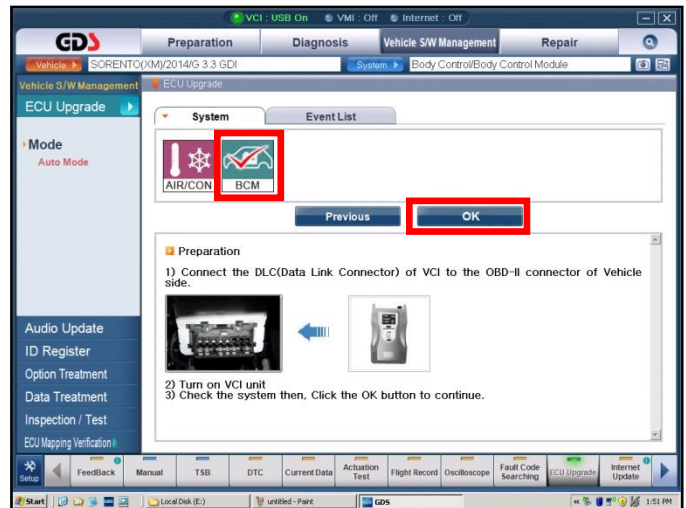
SUBJECT:

# SERVICE ACTION: BCM UPGRADE - IPM LOGIC IMPROVEMENT (SA163A)

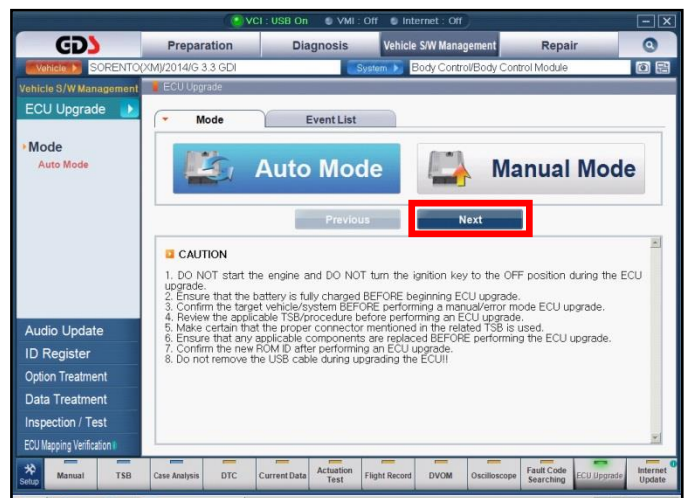
- 9. Select **ECU Upgrade** from the GDS main screen.



- 10. Select **BCM** and Click **OK**.



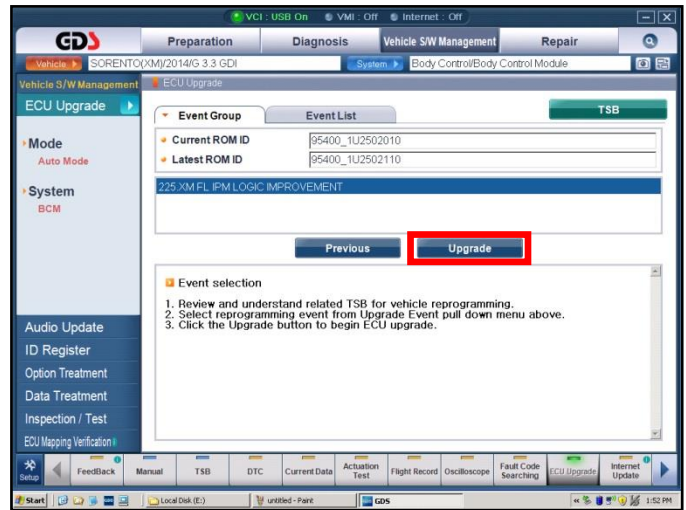
- 11. Select **Auto Mode** and click **OK**.



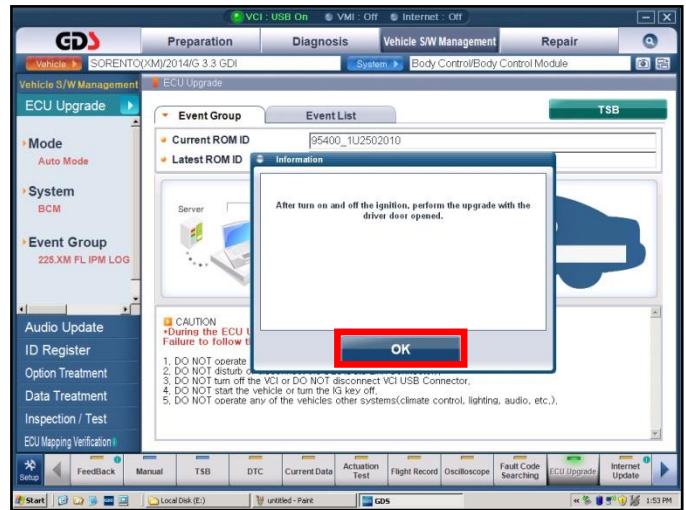
SUBJECT:

# SERVICE ACTION: BCM UPGRADE - IPM LOGIC IMPROVEMENT (SA163A)

12. After the system reads the ROM ID, select Event: **225. XM FL IPM Logic Improvement** and Click **Upgrade**.



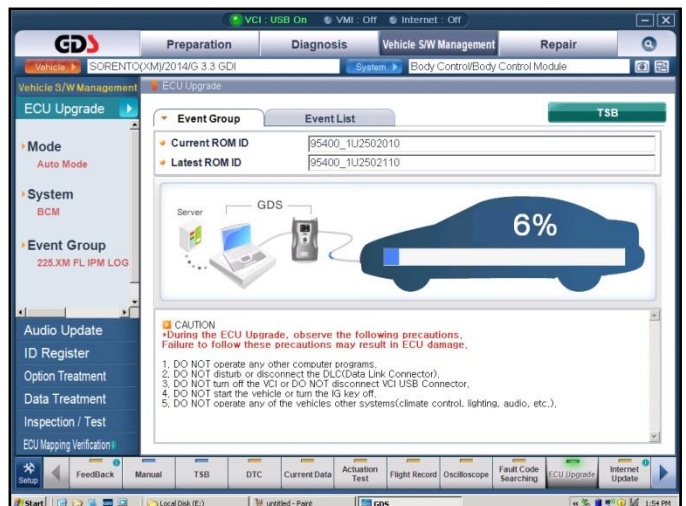
13. Click **OK** on the voltage check screen and cycle the ignition ON and OFF once. Then, open the driver's door and click **OK**.



14. The upgrade will begin and the progress of the upgrade will appear on the bar graph.

## \* NOTICE

If the upgrade fails, disconnect the negative (-) terminal from the battery for 20 seconds and restart the procedure.

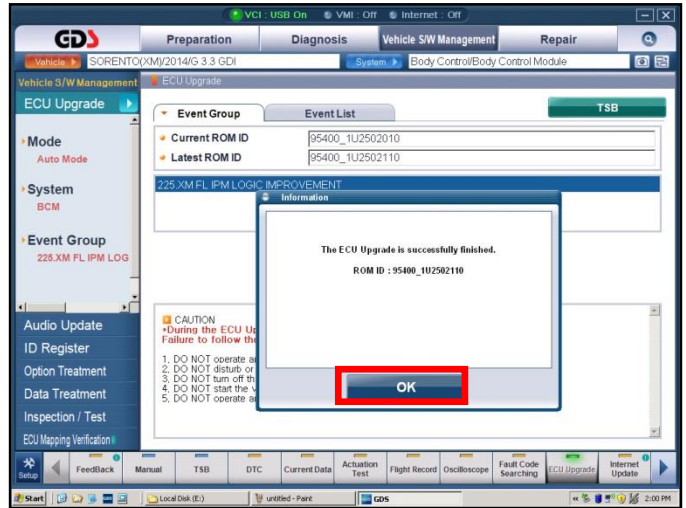




**SUBJECT:**

# SERVICE ACTION: BCM UPGRADE - IPM LOGIC IMPROVEMENT (SA163A)

- 15. Click **OK** on the final screen. Upgrade event 225 is now complete.



- 16. Reconnect the hood switch.
- 17. Operate the tailgate to confirm proper operation.

## Manual Mode Upgrade

### **\* NOTICE**

**Do NOT attempt to perform a Manual Mode upgrade unless Auto Mode fails. Always follow the instructions given on the GDS in either Auto or Manual mode. See the table below for Manual Mode passwords.**

SUBJECT:

## SERVICE ACTION: BCM UPGRADE - IPM LOGIC IMPROVEMENT (SA163A)

### MANUAL MODE ECM UPGRADE PASSWORDS:

#### Upgrade Event #225 Sorento (XMa)

MENU	PASSWORD
XM FL IPM : 95400-1U220	<b>1220</b>
XM FL IPM : 95400-1U230	<b>1230</b>
XM FL IPM : 95400-1U240	<b>1240</b>
XM FL IPM : 95400-1U250	<b>1250</b>

### \* NOTICE

Before performing the manual update, cycle the fuse box panel power switch to the **OFF** position for **20 seconds**. Then, cycle the fuse box panel power switch back to the **ON** position.



1. Within the ECU Upgrade screen, select **Manual Mode** in the left column, select **BCM** and then select **Upgrade Event 225**. Select the appropriate control unit part number by referring to the ROM ID Information Table on Page 2, and click **OK**.
2. Enter the appropriate password from the table above, and click **OK**.
3. Cycle the ignition ON and OFF once and open the driver's door, when prompted. Then, click **OK**.
4. Upgrade will begin and the progress of the upgrade will appear on the bar graph.
5. Click OK on the final screen. Upgrade event 225 is now complete.
6. Reconnect the hood switch
7. Operate the tailgate to confirm proper operation.

SUBJECT:

## SERVICE ACTION: BCM UPGRADE - IPM LOGIC IMPROVEMENT (SA163A)

AFFECTED VEHICLE PRODUCTION RANGE:

Model	Production Date Range
Sorento (XMa)	From January 22, 2013 through November 15, 2013

SERVICE ACTION WARRANTY INFORMATION:

Claim Type	Causal P/N	Qty	N Code	C Code	Repair Description	Labor Op Code	Time	Related Parts	Qty
V	95400 1U220	0	N99	C99	(SA163A) BCM(IPM) UPGRADE	140A15R1	0.3 M/H	N/A	0

### \* NOTICE

VIN inquiry data for this repair is provided for tracking purposes only. Kia retailers should reference SA163A when accessing the WebDCS system.