



GROUP
Climate

MODEL
**Multiple Models
(see table below)**

NUMBER
024

DATE
June 2014

TECHNICAL SERVICE BULLETIN

SUBJECT: TESTING A/C COMPRESSOR FUNCTION USING GDS

This bulletin provides information on a new procedure to test A/C compressor function using the GDS. This test applies to certain models equipped with an electronically controlled compressor containing an electronic control valve (ECV) and an automatic a/c control head (FATC) – refer to the table of applicable models below. Use the test procedure outlined in this bulletin as starting point in A/C system diagnosis.

* NOTICE

This test procedure is to be used in conjunction with, and not as a substitute, for proper diagnosis.



Global Diagnostic System (GDS)

Model	Model Year	Engine Displacement
Forte (YD)	2014 >	ALL
Optima (TF/QF)	2011 >	ALL
Cadenza (VG)	2014 >	ALL
K900 (KH)	2015 >	ALL
Sportage (SL)	2014 >	ALL
Sorento (XM)	2013 >	ALL

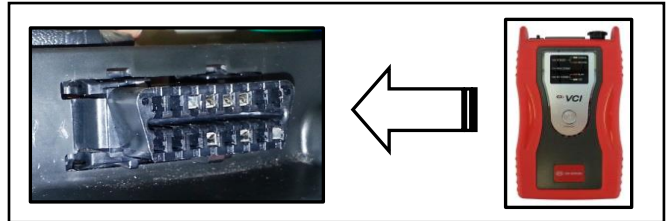
File Under: <Climate>

Circulate To: General Manager Service Manager Parts Manager

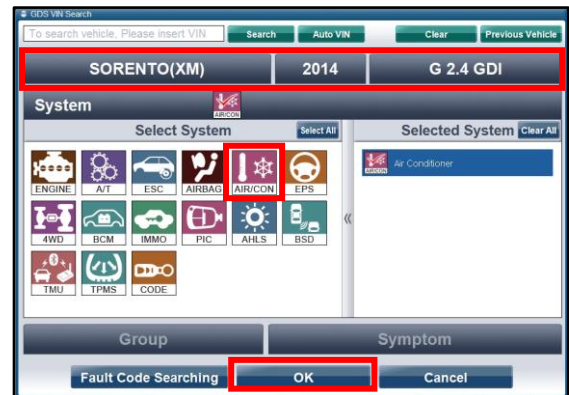
Service Advisor(s) Technician(s) Body Shop Manager Fleet Repair

Service Procedure:

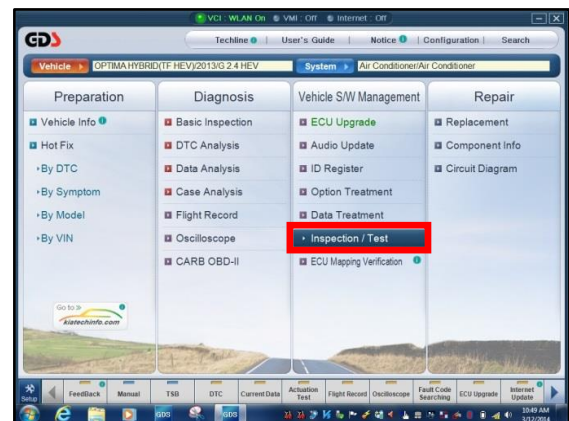
1. Connect the power supply cable to the GDS.
2. Connect the USB cable between the VCI and the GDS tool.
3. Connect the Main 16-pin DLC cable (GHDM – 241000) to the VCI.
4. Connect the Main 16-pin DLC cable (GHDM – 241000) to the OBD-II connector, located under the driver's side of the instrument panel.



5. With the ignition key ON, turn **ON** the VCI and GDS tool. Access the GDS vehicle identification number (VIN) screen and configure the vehicle using the **VIN AUTO DETECT** Function.
6. Select **AIR/CON** system and click **OK**.

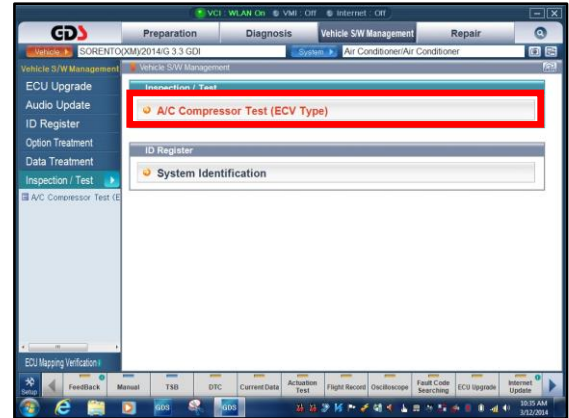


7. Select **Inspection/Test**.

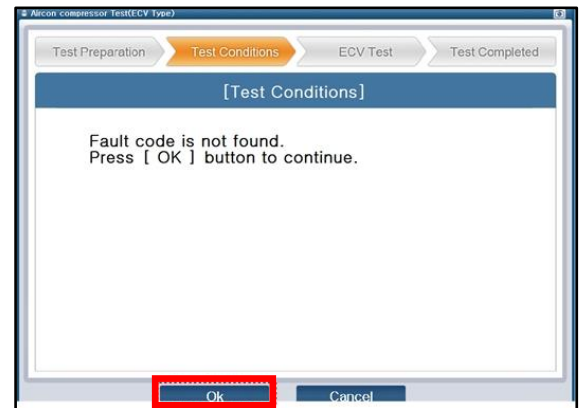


SUBJECT: TESTING A/C COMPRESSOR FUNCTION USING GDS

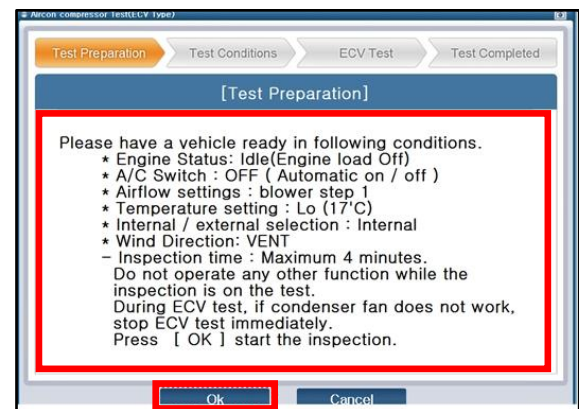
8. Select **A/C Compressor Test (ECV Type)**.



9. The system will check for open DTCs. If no DTCs are found, click **OK**. If DTCs are found, diagnose per the applicable Service Information on KGIS.



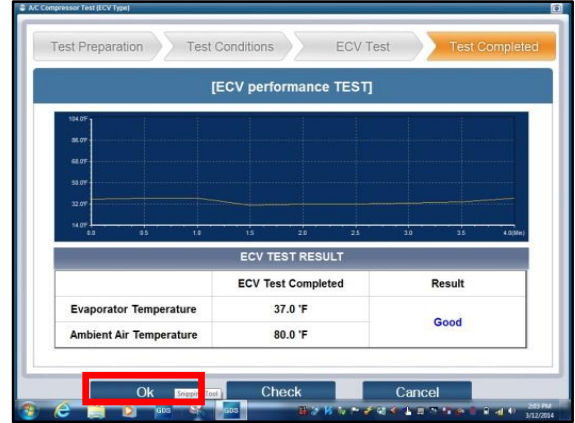
10. Make sure all conditions under **Test Preparation** are met before performing the test.



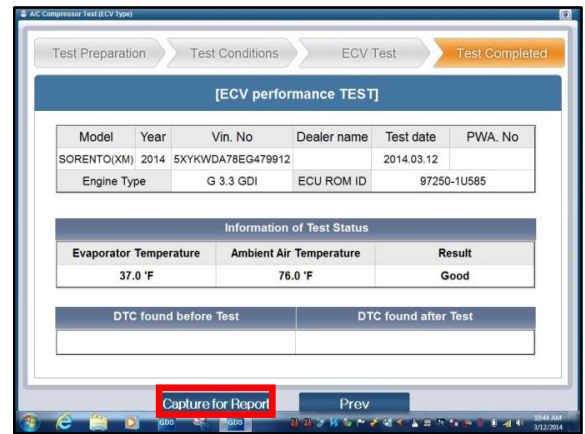
SUBJECT:

TESTING A/C COMPRESSOR FUNCTION USING GDS

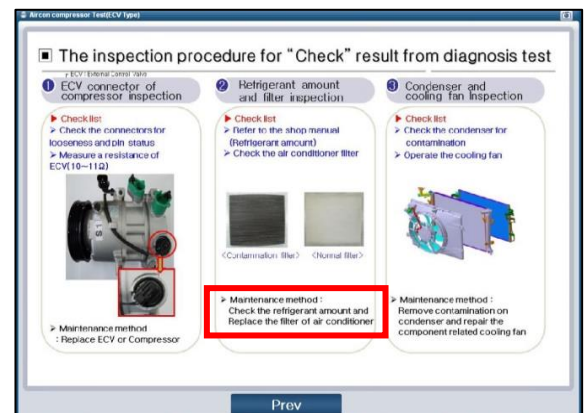
- The GDS will perform the ECV test and will provide either a “Good” or a “Check” result. If the result is “Good”, click on **OK** and proceed to step 12. If the result is “Check”, proceed to step 13.



- Select **Capture Report** to archive a screenshot with all the vehicle information and the test result for future reference.



- Perform the component inspection procedures, as shown, and follow the recommendation under “**Maintenance Method**” to perform any required repairs.



SUBJECT: TESTING A/C COMPRESSOR FUNCTION USING GDS

AFFECTED VEHICLE PRODUCTION RANGE:

Model	Production Range
Forte (YD)	2014 >
Optima (TF)	2011 >
Cadenza (VG)	2014 >
K900 (KH)	2015 >
Sportage (SL)	2014 >
Sorento (XM)	2013 >

WARRANTY CLAIM INFORMATION:

Claim Type	Causal P/N	Qty	N Code	C Code	Repair Description	Labor Op Code	Time	Related Parts	Qty
W	97812 2L000 (YD,TF/QF,VG,XM)	0	N50	C32	(CLI 024) AC-ECV Test	97701F01	0.2 M/H	N/A	0
	97812 22300 (KH, SL)								