

# Hole(s) in Driver's Side Floorboard Carpet

**Service Category** Vehicle Interior

**Section** Interior Panels/Trim

**Market** USA

Toyota Supports  
 ASE Certification 

## Applicability

YEAR(S)	MODEL(S)	ADDITIONAL INFORMATION
2009 – 2014	Venza	Drive Type(s): 2WD, 4WD, FF Engine(s): 1AR, 2GR Transmission(s): 6AT VDS(s): BA3BB, BE11A, BK11A, BK3BB, ZA3BB, ZE11A, ZK11A, ZK3BB

## Introduction

Some 2009 – 2014 model year Venza vehicles may exhibit a condition in which there are one or two holes in the driver's side carpet near the brake pedal. In some cases, there may be one or two bolt studs visible through the holes in the carpet. There are two stud bolts welded to the floorboard in this area that are used to attach the parking brake cable bracket to the vehicle body. Over time, these stud bolts may wear through the driver's side carpeting resulting in the holes (this condition is only noticed when the driver's side floor mat is out of the vehicle). Follow the Repair Procedure in this bulletin to address this condition.

## Warranty Information

OP CODE	DESCRIPTION	TIME	OFF	T1	T2
743511	R & R Front Floor Carpet and/or Mat	1.4	58510-0T011-C0 58510-0T012-C0 58510-0T014-C0	94	19

### APPLICABLE WARRANTY

- This repair is covered under the Toyota Basic Warranty. This warranty is in effect for 36 months or 36,000 miles, whichever occurs first, from the vehicle's in-service date.
- Warranty application is limited to occurrence of the specified condition described in this bulletin.

## Hole(s) in Driver's Side Floorboard Carpet

### Parts Information

PART NUMBER	PART NAME	QTY
58510-0T011-C0 58510-0T012-C0 58510-0T014-C0	Carpet Assy, Floor Front	1
90467-A0024	Clip	2

### Required Tools & Equipment

SPECIAL SERVICE TOOLS (SST)	PART NUMBER	QTY
Plastic Pry Tool Kit*	<a href="#">00002-06020-01</a>	1

\* Essential SST.

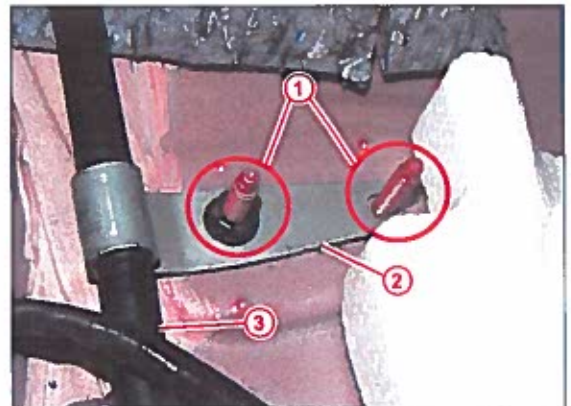
**NOTE**

Additional SSTs may be ordered by calling 1-800-933-8335.

### Repair Procedure

1. Remove all of the necessary vehicle components to remove the Front Floor Carpet Assembly.
2. Remove the Front Floor Carpet Assembly to access the parking brake cable bracket.

**Figure 1.**



<b>1</b>	Stud Bolts
<b>2</b>	Parking Brake Cable Bracket
<b>3</b>	Parking Brake Cable

## Hole(s) in Driver's Side Floorboard Carpet

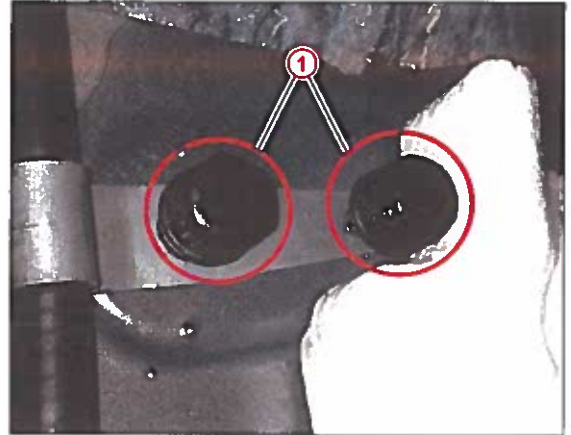
---

### Repair Procedure (Continued)

3. Install the clips over the ends of both stud bolts by pushing the clips onto the bolts. **Figure 2.**

**NOTE**

- Ensure that both clips are fully inserted onto stud bolts.
- Do NOT alter the length of the stud bolts during repair.



**1**

**Clips Installed to Stud Bolts**

4. Install the NEW Front Floor Carpet Assembly.
5. Reassemble vehicle in reverse order of disassembly.

