

# Clutch Pedal Squeak/Creak Noise

**Service Category** Drivetrain

**Section** Clutch

**Market** USA

Toyota Supports  
 ASE Certification 

## Applicability

YEAR(S)	MODEL(S)	ADDITIONAL INFORMATION
2005 – 2014	Tacoma	Transmission(s): 5MT, 6MT

### REVISION NOTICE

September 10, 2014 Rev1:

- Applicability has been updated to include 2013 – 2014 model year Tacoma vehicles.
- The Warranty Information, Parts Information, and the Repair Procedure sections have been updated.

Any previous printed versions of this bulletin should be discarded.

### SUPERSESION NOTICE

The information contained in this bulletin supersedes SB No. TC004-06.

- Applicability has been updated to include 2007 – 2012 model year Tacoma vehicles.
- Repair Procedure has been updated.

Service Bulletin No. TC004-06 is Obsolete and any printed versions should be discarded. Be sure to review the entire content of this bulletin before proceeding.

## Introduction

Some 2005 – 2014 model year Tacoma vehicles may exhibit a squeak or creak noise from the clutch pedal when it is depressed or released. Changes have been made to the clutch pedal and clutch master cylinder assembly to address this condition.

## Clutch Pedal Squeak/Creak Noise

### Warranty Information

OP CODE	DESCRIPTION	TIME	OFF	T1	T2
TC1400	R & R Clutch Pedal Sub-assembly, Clutch Master Cylinder Assembly and Clutch Reservoir Hose	1.2	31311-04010 31311-04011 31311-04012	91	84

#### APPLICABLE WARRANTY

- This repair is covered under the Toyota Comprehensive Warranty. This warranty is in effect for 36 months or 36,000 miles, whichever occurs first, from the vehicle's in-service date.
- Warranty application is limited to occurrence of the specified condition described in this bulletin.

### Parts Information

PART NUMBER		PART NAME	QTY
PREVIOUS	NEW		
31420-04010 31420-04011 31420-04020	31420-60031	Clutch Master Cylinder Assembly	1
31311-04010 31311-04011 31311-04012	31311-04020	Clutch Pedal Sub-assembly	1
31434-04010	31434-60010	Clutch Reservoir Hose	1
08887-02007		Body Grease W	1

### Required Tools & Equipment

REQUIRED MATERIAL	QUANTITY
MP (Multi-Purpose) Grease	As Needed
Brake Fluid: SAE J1703 or FMVSS No. 116 DOT 3	As Needed

SPECIAL SERVICE TOOLS (SST)	PART NUMBER	QTY
Union Nut Wrench 10 mm	<a href="#">09023-00101</a>	1

#### NOTE

Additional SSTs may be ordered by calling 1-800-933-8335.

## Clutch Pedal Squeak/Creak Noise

### Repair Procedure

1. Confirm there is a squeak or creak noise from the clutch pedal assembly when it is depressed or released.

Is the noise coming from the clutch pedal assembly?

- **YES** — Go to step 2.
- **NO** — This bulletin does NOT apply. Refer to the applicable Repair Manual for diagnosis.

**NOTE**

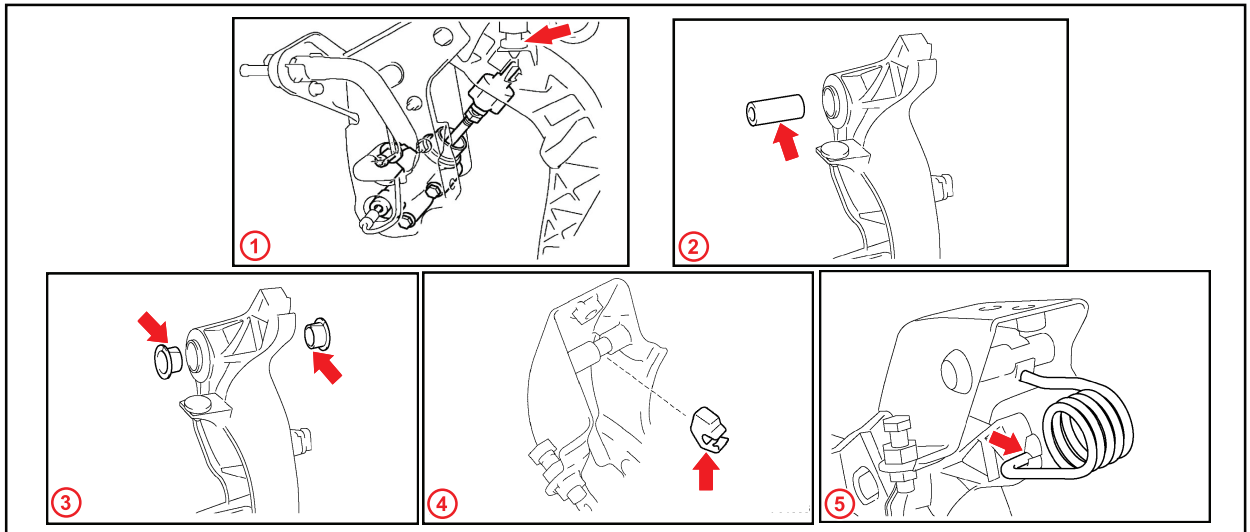
Be sure the noise is from the clutch pedal assembly, and NOT from other components related to the clutch system.

2. Replace the clutch pedal, clutch master cylinder assembly, and clutch master cylinder hose.

**NOTE**

Be sure to apply Body Grease W where the clutch master cylinder clevis and clutch pedal meet (See Picture 1 in Figure 1). Also apply MP grease to the shaft collar, and turnover spring contact surfaces as shown in the repair manual. (See Pictures 2–5 in Figure 1)

Figure 1.



1	Apply <b>Body Grease W</b> Where the Clutch Master Cylinder Clevis and the Clutch Pedal Meet
2	Apply MP Grease to the Clutch Pedal Shaft Collar
3	Apply MP Grease to the 2 Bushings

4	Apply MP Grease to the Clutch Pedal Spring Holder and the Clutch Pedal Support
5	Apply MP Grease to the Clutch Pedal Sub-Assembly and the Compression Spring

## Clutch Pedal Squeak/Creak Noise

---

### Repair Procedure (Continued)

Refer to the Technical Information System (TIS), applicable model year Tacoma Repair Manual:

- 2005 Tacoma:  
*Drivetrain – Clutch – [“Clutch Pedal Sub-Assy: Replacement”](#)*
- 2006 – 2014 Tacoma:  
*Drivetrain – Clutch – “Clutch: Clutch Pedal: Removal/Installation”*
  - 2006 Tacoma: [Removal](#) / [Installation](#)
  - 2007 Tacoma: [Removal](#) / [Installation](#)
  - 2008 Tacoma: [Removal](#) / [Installation](#)
  - 2009 Tacoma: [Removal](#) / [Installation](#)
  - 2010 Tacoma: [Removal](#) / [Installation](#)
  - 2011 Tacoma: [Removal](#) / [Installation](#)
  - 2012 Tacoma: [Removal](#) / [Installation](#)
  - 2013 Tacoma: [Removal](#) / [Installation](#)
  - 2014 Tacoma: [Removal](#) / [Installation](#)

3. Confirm the repair.