

HDD Navigation CDDB Update Process

Service Category Audio/Visual/Telematics

Section Navigation/Multi Info Display

Market USA

Lexus Supports
ASE Certification 

Applicability

YEAR(S)	MODEL(S)	ADDITIONAL INFORMATION
2007 – 2009	LS460	
2008 – 2009	LS600H, LX570	

SUPERSESION NOTICE

The information contained in this bulletin supersedes SB No. L-SB-0182-09.

- The Required Tools & Equipment and the Version Verification sections have been updated.

Service Bulletin No. L-SB-0182-09 is Obsolete and any printed versions should be discarded. Be sure to review the entire content of this bulletin before proceeding.

Introduction

Some 2007 – 2009 model year Lexus vehicles equipped with a Hard Disk Drive (HDD) Navigation System contain a jukebox feature that allows up to 2000 audio recordings to be transferred from their original CD media to the HDD on-board the vehicle. Detailed information about the audio recordings is attached to each track at the time of transfer. When each audio track is presented on the touch screen, informational details including Genre, Artist, Album, and Title are presented. This detailed track information is stored on the HDD in the Compact Disc Database (CDDB).

CDDB data updates will be released quarterly through TIS and can be uploaded to the vehicle using the Navigation Update Tool and Navigation Programs Installer software. CDDB data only needs to be loaded onto the Navigation Update Tool once per quarterly release. Vehicle CDDB updates are performed using the Navigation Update Tool.

Follow the procedures listed in this bulletin to:

- Determine the current version of the CDDB data on the vehicle and installed on the Navigation Update Tool.
- Load the latest CDDB data onto the Navigation Update Tool.
- Connect the Navigation Update Tool to the vehicle and update the vehicle to the latest release.
- Update the CDDB data for any audio tracks transferred to the vehicle for which CDDB data was not previously available.

HDD Navigation CDDB Update Process

Warranty Information

OP CODE	DESCRIPTION	TIME	OFF	T1	T2
N/A	Not Applicable to Warranty	-	-	-	-

Service Information

OP CODE	DESCRIPTION	TIME	OFF	T1	T2
CDDBUD	CDDB Update	0.2	-	-	-

SERVICE APPLICABILITY

This service will be provided under the Lexus Courtesy Maintenance program for 48 months, unlimited mileage. Each update may only be performed once per quarter per vehicle. Please refer to the Lexus Service & Parts Operations Communications (SPOC) bulletin "[2007-18: Compact Disc Data Base \(CDDB\) Updates.](#)"

Required Tools & Equipment

REQUIRED EQUIPMENT	QTY
PC with Windows® XP, Windows® 7, or Windows® 8 Operating System	1

SPECIAL SERVICE TOOLS (SST)	PART NUMBER	QTY
Navigation Update Tool Kit*	95079-00003-KIT	1
GR8 Battery Diagnostic Station*	00002-MCGR8	1

* Essential SST.

Version Verification

NOTE

- In order to perform the procedures outlined in this bulletin, you **MUST** have completed the setup procedure in Service Bulletin No. [L-SB-0072-14](#), "HDD Navigation Program Setup."
- Before performing this procedure, disconnect all other USB peripheral and external storage devices (i.e., USB thumb drives, hard drives, cameras, mice, etc.).
- For additional details, refer to the applicable Navigation Update Tool Operating Manual on the Technical Information System (TIS): *Diagnostics – Tools & Equipment – Navigation – Reference Documents.*
 - [Windows 7/8 Navigation Update Tool Operating Manual](#)
 - [Windows XP Navigation Update Tool Operating Manual](#)

Before performing a CDDB update, confirm that the Navigation Update Tool and/or the vehicle's Navigation System are NOT up-to-date.

HDD Navigation CDDB Update Process

Checking for Current CDDB Version on Navigation Update Tool

1. Open the *Navigation Programs Installer*.

NOTE

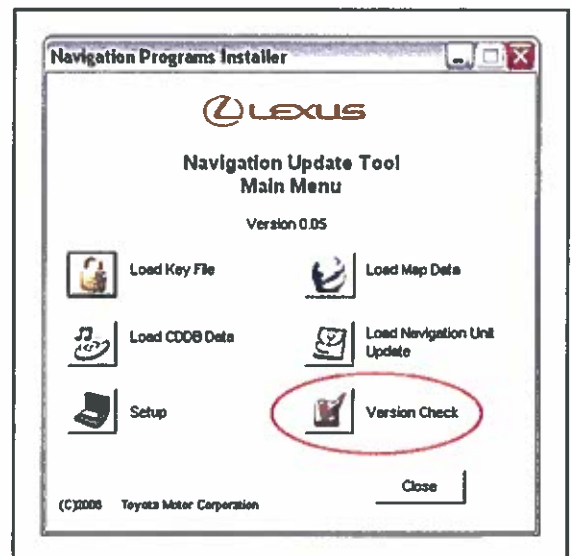
- When properly installed, the Navigation Programs Installer icon will be found on the Techstream desktop.
- If the application is NOT properly installed, refer to Service Bulletin No. [L-SB-0072-14](#), "HDD Navigation Program Setup."

Figure 1.



2. Click *Version Check* on the *Navigation Update Tool Main Menu*.

Figure 2.

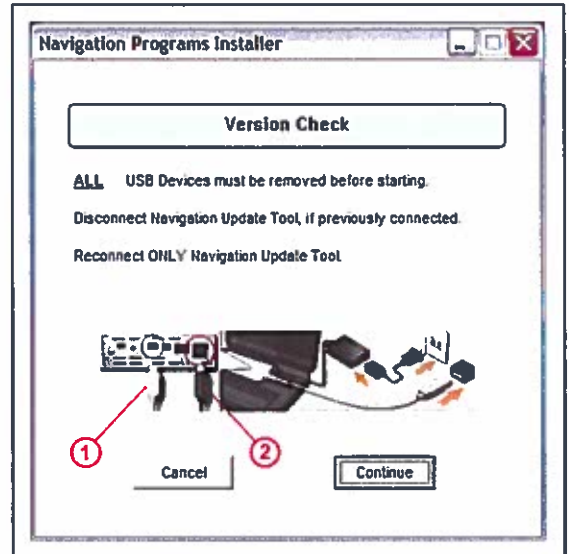


HDD Navigation CDDB Update Process

Checking for Current CDDB Version on Navigation Update Tool (Continued)

3. Connect the Navigation Update Tool.
 - A. Make sure the USB cable is secured in both the PC and the Navigation Update Tool USB ports.
 - B. Confirm that the Navigation Update Tool is powered correctly.
 - C. Turn power ON.
 - D. Click *Continue*.

Figure 3.



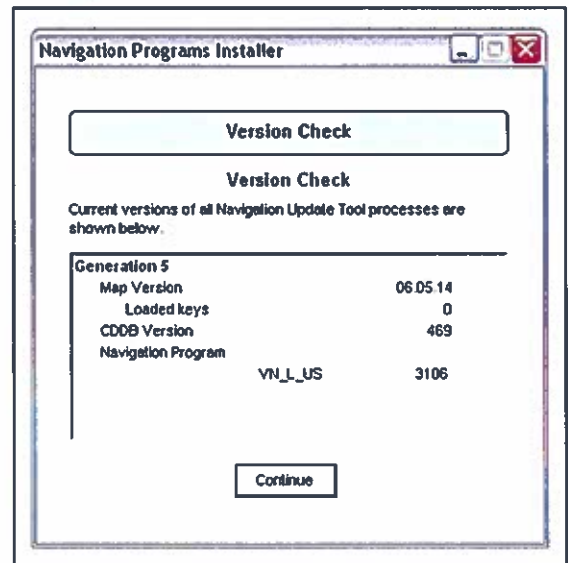
1	To PC
2	To A/C Power

4. Compare the CDDB version with the CDDB version shown on TIS.

NOTE

- If the CDDB version on the Navigation Update Tool is the same as shown on TIS, then go to the *“Vehicle Load”* section in this bulletin.
- If the CDDB version on the Navigation Update Tool is NOT the same as shown on TIS, then go to the *“Tool Load”* section in this bulletin.

Figure 4.



HDD Navigation CDDB Update Process

Checking CDDB Version on Vehicle HDD Navigation System

1. Press the "ENGINE START STOP" switch two times with the brake pedal released to cycle the ignition to the ON mode (Engine/Hybrid system OFF).
2. From the multi-information display, select *I Agree*. **Figure 5.**



3. Press the *MENU* button.

Figure 6.



4. From the multi-information display, select *HDD Data*.

Figure 7.



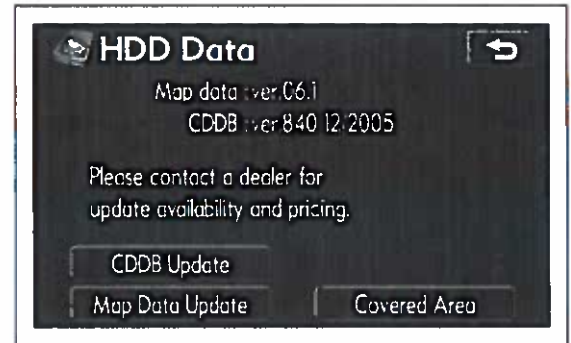
HDD Navigation CDDB Update Process

Checking CDDB Version on Vehicle HDD Navigation System (Continued)

5. Compare the CDDB version on the Navigation System to that on the Navigation Update Tool.

NOTE

- If the CDDB version on the vehicle is the same as shown on the Navigation Update Tool, then the vehicle does NOT need the update.
- If the CDDB version on the vehicle is NOT the same as shown on the Navigation Update Tool, then go to the "Vehicle Load" section in this bulletin.

Figure 8.

Tool Load

Loading CDDB Data onto Navigation Update Tool

NOTE

There are two separate processes used to update the CDDB data on the vehicle:

- Loading the CDDB data onto the Navigation Update Tool.
- Loading the CDDB data into the vehicle HDD Navigation System.

If the CDDB version on the Navigation Update Tool is the same as shown on TIS, then go to the "Vehicle Load" section in this bulletin.

If the CDDB version on the Navigation Update Tool is NOT the same as shown on TIS, then follow the instructions below.

NOTE

- In order to perform the following procedure, the PC being used MUST be in Administrator Mode. Software will NOT complete CDDB download if this is not met.
- Before performing this procedure, disconnect all other USB peripheral and external storage devices (i.e., USB thumb drives, hard drives, cameras, mice, etc.).

1. Log into TIS.
2. Download the CDDB data file.
 - A. Click on the *TIS* tab.
 - B. Click on the *Diagnostics* tab.
 - C. Click on the *Tools & Equipment* tab.

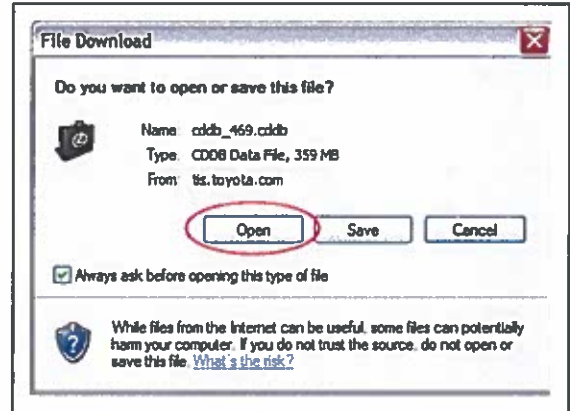
HDD Navigation CDDB Update Process

Tool Load (Continued)

- D. Click on the *Navigation* tab under *Tools*.
 - E. Click on *CDDB Data* under *Available Software Updates*.
3. Click *Open* to begin the download.

NOTE
The file is large and may take up to 10 minutes to download.

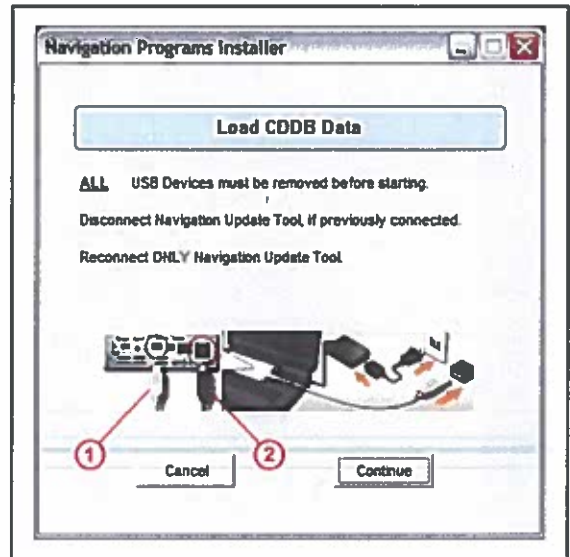
Figure 9.



4. Connect the Navigation Update Tool.
- A. Make sure the USB cable is secured in both the PC and the Navigation Update Tool USB ports.
 - B. Confirm that the Navigation Update Tool is powered correctly.
 - C. Turn the power ON.
 - D. Click *Continue*.

CDDB data will decompress before it is copied onto the Navigation Update Tool.

Figure 10.

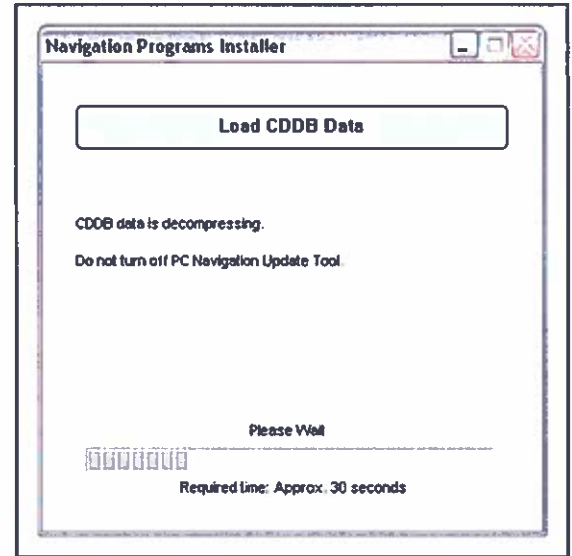


1	To PC
2	To A/C Power

HDD Navigation CDDB Update Process

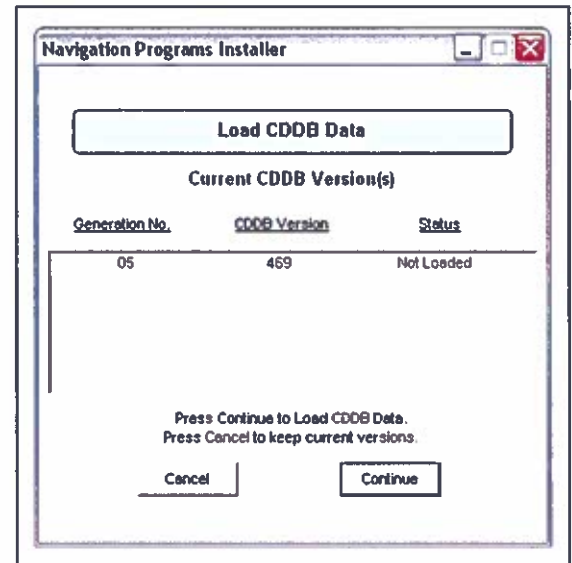
Tool Load (Continued)

Figure 11.



5. Verify the correct version of CDDB data to load onto the Navigation Update Tool.

Figure 12.



HDD Navigation CDDB Update Process

Tool Load (Continued)

6. Click *Continue* to load CDDB data onto the Navigation Update Tool.

CDDB data will then copy to the Navigation Update Tool (requires about 5 minutes).

Figure 13.

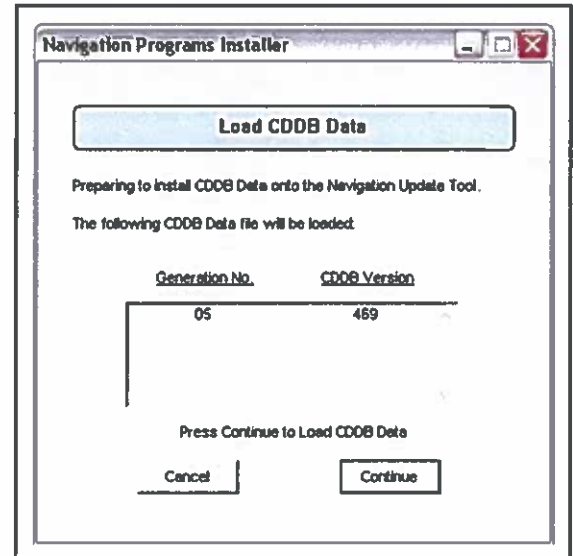
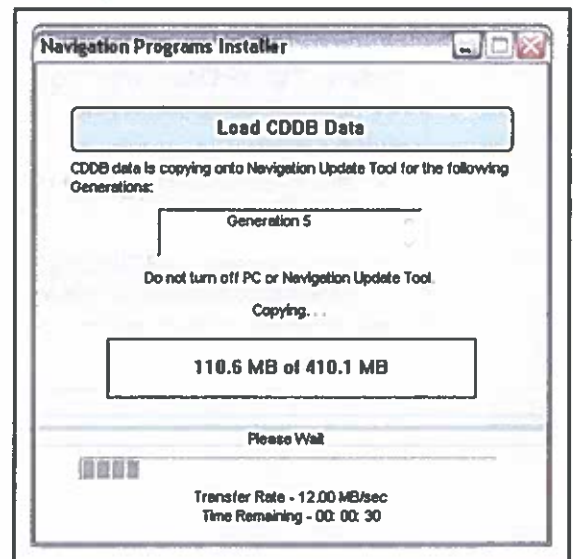


Figure 14.

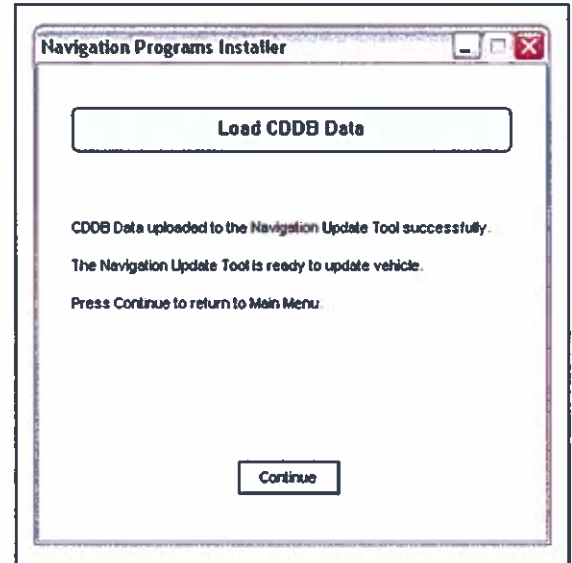


HDD Navigation CDDB Update Process

Tool Load (Continued)

7. Verify the CDDB data is loaded onto the Navigation Update Tool and can now be used to update the vehicle.

Figure 15.



Vehicle Load

Loading CDDB Data onto Vehicle HDD Navigation System

NOTE

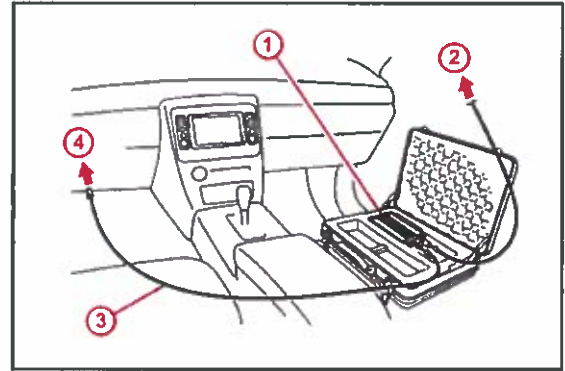
- Prior to connecting to the vehicle, you **MUST** disconnect the Navigation Update Tool from the PC.
- Connect the GR8 Battery Diagnostic Station to the vehicle prior to beginning the process to ensure constant battery voltage.

HDD Navigation CDDB Update Process

Vehicle Load (Continued)

1. Connect the Navigation Update Tool to the vehicle.
 - A. Make sure the IEEE 1394 cable is secured in both the Navigation Update Tool and the vehicle connector.
 - B. Confirm the Navigation Update Tool is powered correctly.
 - C. Turn power ON.

Figure 16.



1	Navigation Update Tool
2	To A/C Adapter Power Supply
3	IEEE 1394 Vehicle Exchange Cable
4	To Vehicle-Side Connection Point

2. Press the "ENGINE START STOP" switch two times with the brake pedal released to cycle the ignition to the ON mode (Engine/Hybrid system OFF).
3. From the multi-information display, select *I Agree*. Figure 17.



HDD Navigation CDDB Update Process

Vehicle Load (Continued)

4. Press the *MENU* button.

Figure 18.



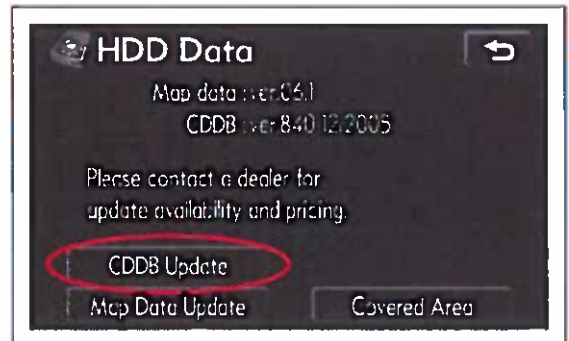
5. From the multi-information display, select *HDD Data*.

Figure 19.



6. Select *CDDB Update*.

Figure 20.

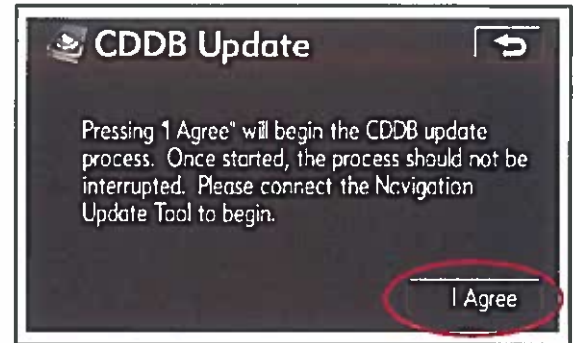


HDD Navigation CDDB Update Process

Vehicle Load (Continued)

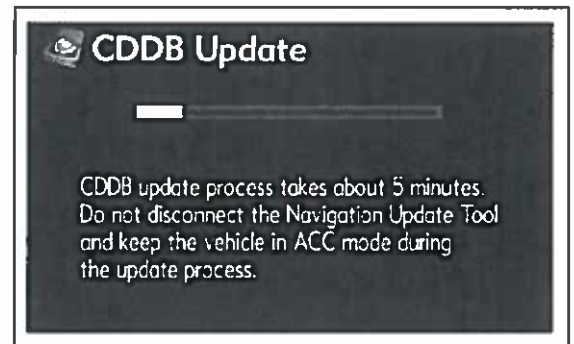
7. Select *I Agree*.

Figure 21.



8. Allow CDDB data to copy (requires about 5 minutes).

Figure 22.



9. Select *OK*.

Figure 23.



10. Disconnect the Navigation Update Tool from the vehicle.

HDD Navigation CDDB Update Process

Update Music

Updating Music Data AFTER CDDB Data Installation

After a successful CDDB update, some albums may still display without the updated information. These albums will need to be manually updated using the following procedure.

1. Press the *DISC AUX* button.

Figure 24.



2. Select *ALBUM LIST*.

Figure 25.



HDD Navigation CDDB Update Process

Update Music (Continued)

3. Select *MANAGE ALBUMS* after selecting desired album to update.

HINT

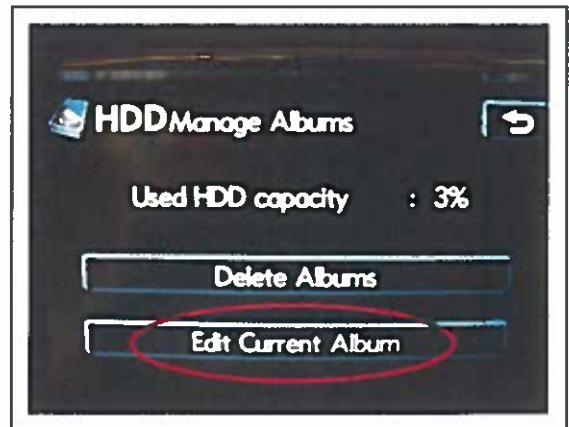
Only albums without a name label need to be updated.

Figure 26.



4. Select *Edit Current Album*.

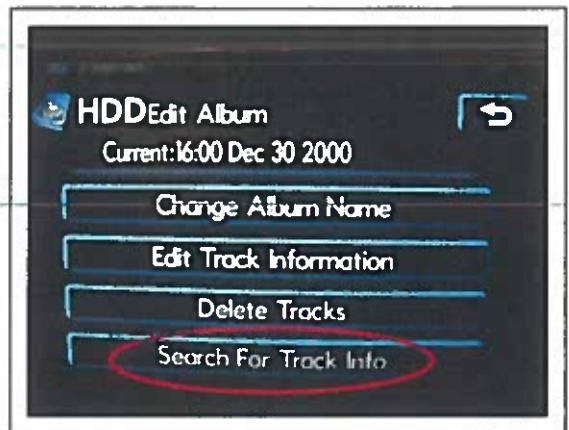
Figure 27.



5. Select *Search For Track Info*.

Notice that selected album shows up as a Time and a Date.

Figure 28.



HDD Navigation CDDB Update Process

Update Music (Continued)

- Once the *HDD CD Title Confirmation* screen appears, select *OK*.

NOTE

If album information still displays a time and a date as the album title, then the CD was released after the current data was updated.

Figure 29.



- Allow data to update.

Figure 30.



- Press the back arrow.

Notice the selected album now has a title.

Figure 31.



HDD Navigation CDDB Update Process

Update Music (Continued)

9. Verify the updated album information is now in the *HDD ALBUM* list. **Figure 32.**



