

HDD Navigation Map Update Process (EMV-N)

Service Category Audio/Visual/Telematics

Section Navigation/Multi Info Display

Market USA

Lexus Supports
ASE Certification 

Applicability

YEAR(S)	MODEL(S)	ADDITIONAL INFORMATION
2013	CT200H, IS250, IS350	
2013 – 2014	ES300H, ES350, GS350, GS450H, IS F, IS250C, IS350C, LS460, LS600H	
2013 – 2015	LX570, RX350, RX450H	

SUPERSESSON NOTICE

The information contained in this bulletin supersedes SB No. L-SB-0003-13.

- Applicability has been updated to include 2015 model year LX 570, RX 350, RX 450h vehicles.

Service Bulletin No. L-SB-0003-13 is Obsolete and any printed versions should be discarded. Be sure to review the entire content of this bulletin before proceeding.

Introduction

Lexus models equipped with the HDD Navigation (EMV-N) System require a Special Service Tool (SST) USB drive to update the map, points of interest, Gracenote®, and system software. The SST is used with all vehicles to deliver the update, however a unique Activation Number is required for each vehicle. Activation Numbers are provided in an Activation Card Number (ACN) pamphlet available through the normal parts ordering system. Use the process described in this bulletin to perform the update.

NOTE

- Gracenote® information must be updated at the same time as Map Data. This data is included on the Map Data SST.
- Map data will be released annually through the shipment of a USB Drive SST to each dealer. The SST must be stored in the SST cabinet to ensure it can be easily found.

HDD Navigation Map Update Process (EMV-N)

Warranty Information

OP CODE	DESCRIPTION	TIME	OFF	T1	T2
N/A	Not Applicable to Warranty	-	-	-	-

Parts Information

CURRENT PART NUMBER	PART NAME	QTY
PT219-HDD07-14	ACN NAV UPDTE V.14.1 (Pamphlet)	1

NOTE

Pamphlet is green, with Lexus and Denso labels on the front cover.



Required Tools & Equipment

SPECIAL SERVICE TOOLS (SST)	PART NUMBER	QTY
USB Drive Navigation Map Update - Denso*	LEXD-HDD07-14	1

* Essential SST.

NOTE

Additional SSTs may be ordered by calling 1-800-933-8335.

HDD Navigation Map Update Process (EMV-N)

On-vehicle Data Navigation Update

1. Update Gracenote® information using Service Bulletin No. [L-SB-0073-14](#), "HDD Navigation Gracenote Database Update Process (EMV-N)."

HINT

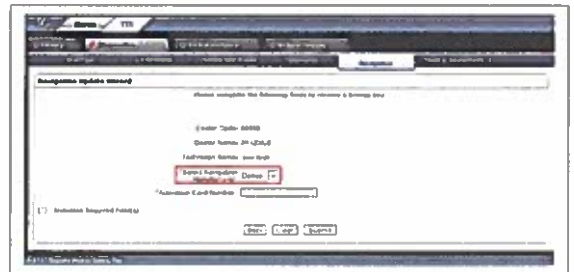
Connect a battery charger to the vehicle prior to beginning the process to ensure constant battery voltage.

2. Log into TIS.
3. Log into Navigation Update Wizard.
 - A. Click on the *TIS* tab.
 - B. Click on the *Diagnostics* tab.
 - C. Click on the *Navigation* tab.
 - D. Re-enter your password.
 - E. Click *Login*.
4. Select *Denso* from the *Select Navigation Manufacturer* dropdown.

Figure 1.



Figure 2.



5. Enter the Activation Card number from the inside of the pamphlet (obtained from Parts department).

Figure 3.



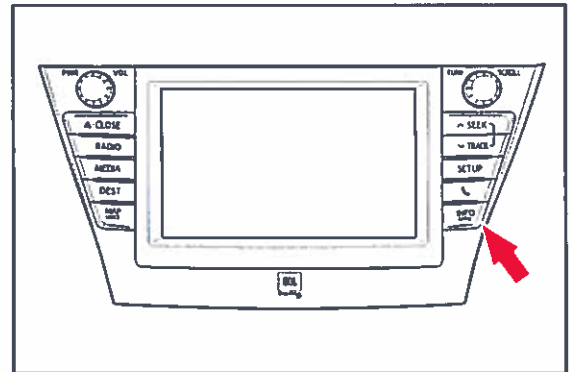
6. Click *Submit*.
7. Press the "ENGINE START STOP" switch two times with the brake pedal released to cycle the ignition to the "ON" position (Engine/Hybrid system "OFF").

HDD Navigation Map Update Process (EMV-N)

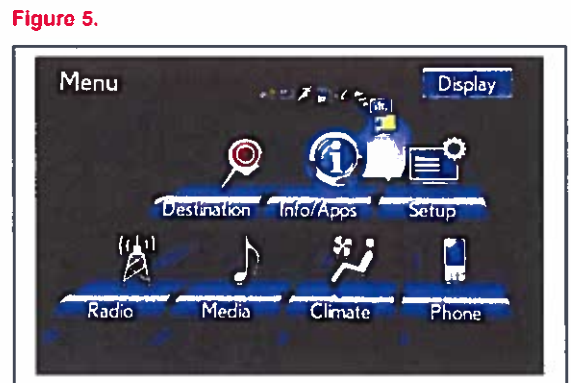
On-vehicle Data Navigation Update (Continued)

8. Please note the head unit style to determine how to get to the Map Data screen.

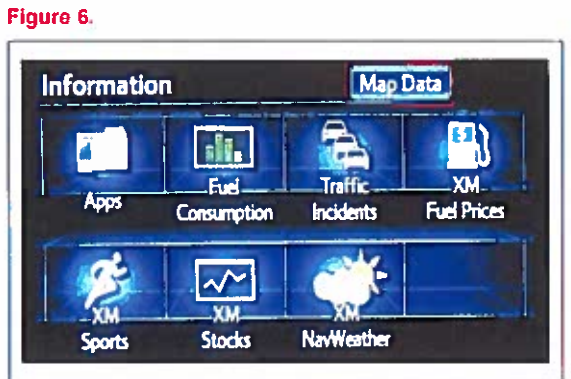
- A. Press the *INFO APPS* button on the navigation head unit. **Figure 4.**



- B. Press *Menu* on the Remote Touch pad. Then select *Info/Apps*.



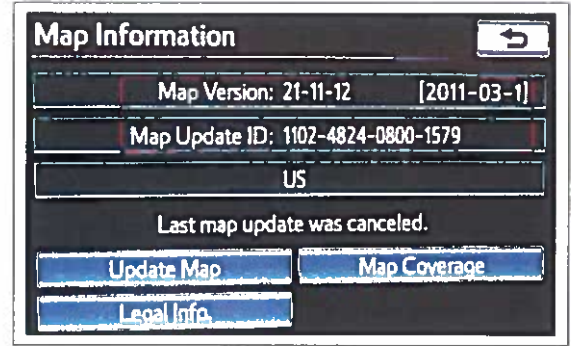
- 9. Select *Map Data* on the navigation screen.



HDD Navigation Map Update Process (EMV-N)

On-vehicle Data Navigation Update (Continued)

10. Record the *Map Version* and *Map Update ID* from the navigation screen. **Figure 7.**



11. Enter navigation data into the *Navigation Update Wizard* form. **Figure 8.**

- A. Select the correct USB part number (found on the SST packaging; Starts with *LEXD*).
- B. Input the *Map Update ID* into TIS (without hyphens).
- C. Input the *Map Version* into TIS.
- D. Enter the *VIN*.
- E. Enter the *Repair Order Number*.
- F. Click *Submit*.



12. Check off each item after confirming that it is correct. If any of the information is incorrect, click the *Back* button. **Figure 9.**



13. Click *Confirm*.

HDD Navigation Map Update Process (EMV-N)

On-vehicle Data Navigation Update (Continued)

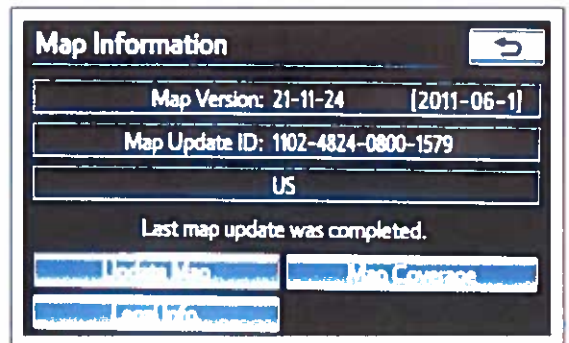
14. Note the License Key that was generated.
(Print this page if necessary.)

Figure 10.



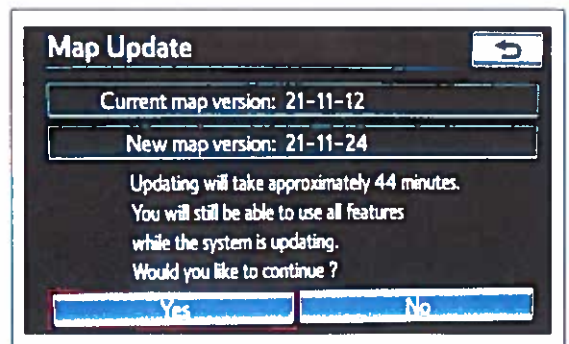
15. Insert the USB Drive SST into the USB port of the vehicle (usually located under the navigation head unit, in the center console/armrest, or glove box).
16. Select *Update Map* on the navigation screen.

Figure 11.



17. Select *Yes*.

Figure 12.

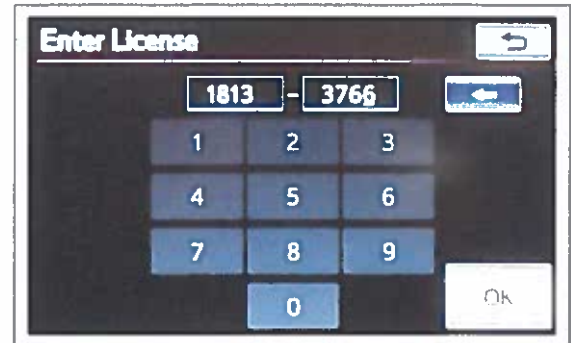


HDD Navigation Map Update Process (EMV-N)

On-vehicle Data Navigation Update (Continued)

18. Enter the License Key from step 14.

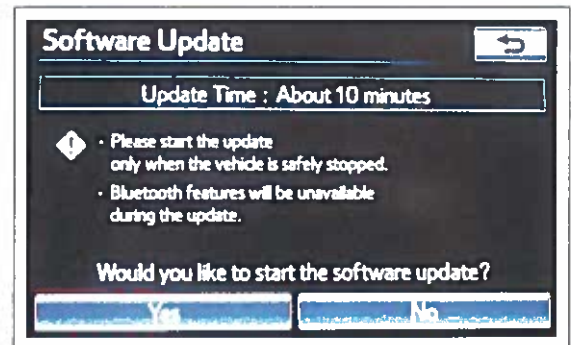
Figure 13.



19. Select **OK**.

20. Update navigation head unit software. Select **Yes** on the *Software Update* screen to accept and begin this update.

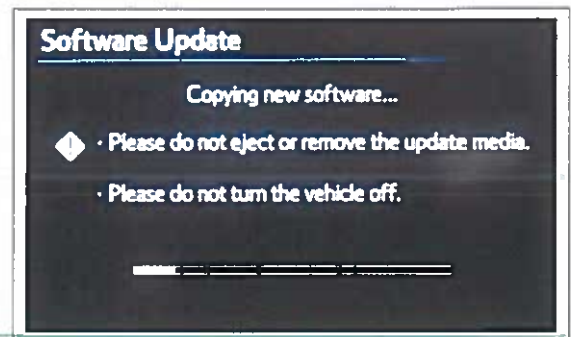
Figure 14.



If the head unit displays the *Map Update* screen, go to step 21.

NOTE
 Navigation Map Data will be loaded when this process completes.

Figure 15.



HDD Navigation Map Update Process (EMV-N)

On-vehicle Data Navigation Update (Continued)

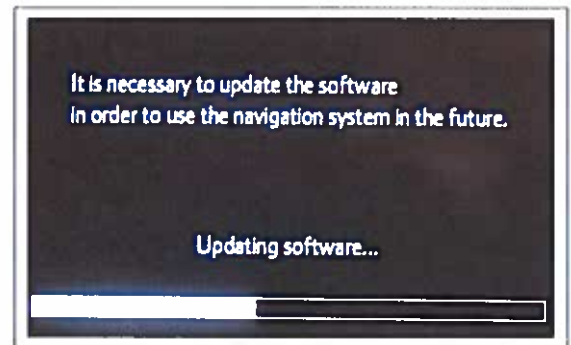
- A. Cycle ignition OFF, then ON (Ready OFF/Engine OFF).

Figure 16.



- B. Allow update to complete (approximately 10 minutes).

Figure 17.



- C. The head unit will prompt to cycle ignition. Cycle ignition OFF and then ON (Ready OFF/Engine OFF).

- D. Press the *INFO APPS* button.

Figure 18.



- E. Select *Map Data*.

HDD Navigation Map Update Process (EMV-N)

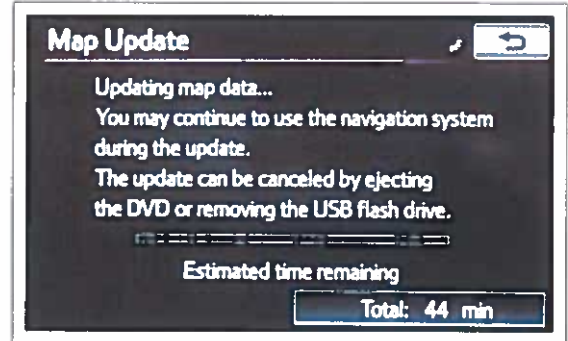
On-vehicle Data Navigation Update (Continued)

21. The Navigation Map Update will begin automatically.

NOTE

This process will take about 45 minutes.

Figure 19.



22. The new map data will be available after you cycle the ignition. Cycle ignition OFF, then ON (Ready OFF/Engine OFF).

Figure 20.



23. Map Update is complete.

Figure 21.



24. Verify navigation operation.

