

HDD Navigation Program Setup

Service Category Audio/Visual/Telematics

Section Navigation/Multi Info Display

Market USA

Lexus Supports
ASE Certification 

Applicability

YEAR(S)	MODEL(S)	ADDITIONAL INFORMATION
2011 – 2012	CT200H	
2010 – 2012	ES350, HS250H, IS F, IS250, IS250C, IS350, IS350C, RX350, RX450H	
2010 – 2011	GS350, GS450H, GS460	
2010 – 2013	GX460	
2012	LFA	
2007 – 2012	LS460	
2008 – 2012	LS600H, LX570	
2010	SC430	

SUPERSESION NOTICE

The information contained in this bulletin supersedes SB No. L-SB-0101-12.

- The entire bulletin has been updated.

Service Bulletin No. L-SB-0101-12 is Obsolete and any printed versions should be discarded. Be sure to review the entire content of this bulletin before proceeding.

Introduction

Lexus models equipped with Hard Disk Drive (HDD) Navigation may have their map data, Compact Disc Database (CDDb), and navigation head unit software updated using the Navigation Update Tool and the HDD Navigation Programs Installer.

The Navigation Programs Installer is a PC application available on the Technical Information System (TIS) and must be installed on Techstream or an equivalent PC. The Navigation Update Tool is an essential service tool and the device must be properly configured before initial use.

HDD Navigation Program Setup

Introduction (Continued)

Follow the procedures in this bulletin to locate and install the HDD Navigation Programs Installer and properly configure the Navigation Update Tool. The HDD Navigation Programs Installer is a mandatory application that will be used to update the vehicle's map data, as well as the CDDB data.

This bulletin will outline two processes that must be completed to prepare the Navigation Update Tool for initial use:

- Download and install the Navigation Programs Installer onto a PC.
- Perform initial setup of the Navigation Update Tool.

NOTE

- In order to perform the download and setup procedure, the PC being used **MUST** be put in **ADMINISTRATOR MODE**. Software will **NOT** complete setup if this is not met.
- Before performing this procedure, disconnect all other USB peripheral and external storage devices (i.e., USB thumb drives, hard drives, cameras, mice, etc.).
- For additional details, refer to the applicable Navigation Update Tool Operating Manual on the Technical Information System (TIS): *Diagnostics – Tools & Equipment – Navigation – Reference Documents*:
 - [Windows 7/8 Navigation Update Tool Operating Manual](#)
 - [Windows XP Navigation Update Tool Operating Manual](#)

Warranty Information

OP CODE	DESCRIPTION	TIME	OFF	T1	T2
N/A	Not Applicable to Warranty	–	–	–	–

Required Tools & Equipment

REQUIRED EQUIPMENT		QTY
PC with Windows® XP, Windows® 7, or Windows® 8 Operating System		1

SPECIAL SERVICE TOOLS (SST)	PART NUMBER	QTY
Navigation Update Tool Kit*	95079-00003-KIT	1
GR8 Battery Diagnostic Station*	00002-MCGR8	1

* Essential SST.

NOTE

Additional SSTs may be ordered by calling 1-800-933-8335.

HDD Navigation Program Setup

Application Installation

The Navigation Programs Installer should be installed on one or more of the dealership's Techstream units, or any equivalent service department PC.

Minimum PC requirements for the application to operate properly include:

- Windows® XP
- Internet Explorer Version 6 SP2
- 512 MB RAM
- 1.0 GHz processor
- 20 GB free hard drive space
- 2 free USB ports

Download and Install Navigation Programs Installer

1. Turn on PC.
2. Log into TIS.
3. Download the Navigation Programs Installer from TIS.
 - A. Click on the *TIS* tab.
 - B. Click on the *Diagnostics* tab.
 - C. Click on the *Tools & Equipment* tab.
 - D. Click on the *Navigation* tab under *Tools*.
 - E. Click on either *Windows® 7/8 Navigation Programs Installer* or *Windows® XP Navigation Programs Installer* under *Available Software Updates*.

NOTE

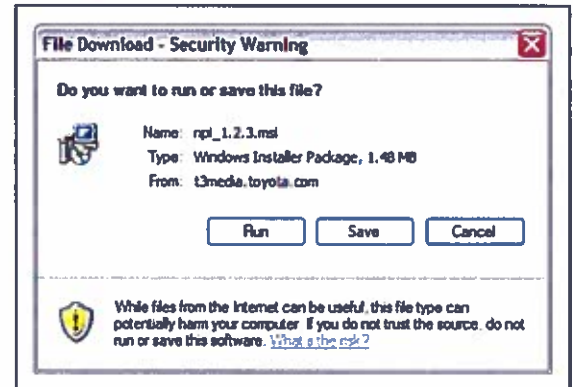
If the TIS division preference is NOT set to *Lexus* (under the *My Account* area), the Navigation Update Tool tab will NOT display. HDD Navigation information is a Lexus ONLY TIS option at this time.

HDD Navigation Program Setup

Application Installation (Continued)

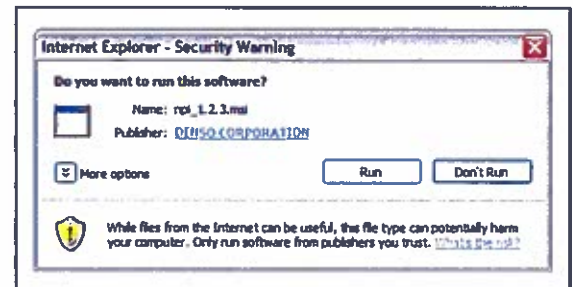
4. Click *Run* from the *File Download - Security Warning* screen to begin download.

Figure 1.



5. Click *Run* to install program onto PC.

Figure 2.



6. Click *Next*.

Figure 3.



HDD Navigation Program Setup

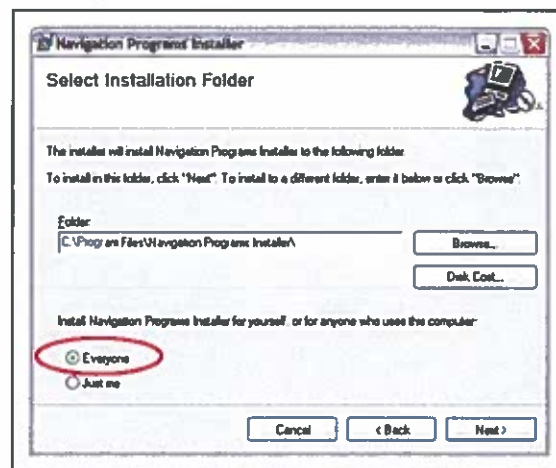
Application Installation (Continued)

7. Ensure the *Everyone* radio button is selected and click *Next*.

NOTE

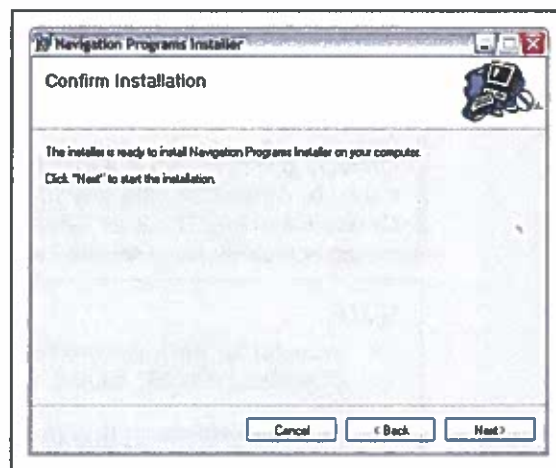
If *Everyone* is NOT selected, future installation errors could occur.

Figure 4.



8. Click *Next*.

Figure 5.

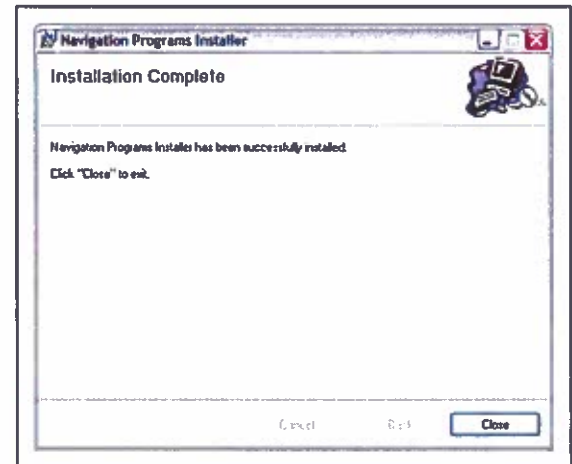


HDD Navigation Program Setup

Application Installation (Continued)

9. Click *Close*.

Figure 6.



Tool Setup

Perform Initial Setup for Navigation Update Tool

WARNING

Do NOT perform setup if you have key files loaded onto the Navigation Update Tool with an older version; otherwise, the key files could be erased and key files CANNOT be recovered. Call the Denso Nav Help Desk at 1-888-285-4236 for assistance.

NOTE

- In order to perform the following procedure, the PC being used MUST be put in ADMINISTRATOR MODE. Software will NOT complete setup if this is not met.
- Before performing this procedure, disconnect all other USB peripheral and external storage devices (i.e., USB thumb drives, hard drives, cameras, mice, etc.).

HDD Navigation Program Setup

Tool Setup (Continued)

Setup ONLY needs to be completed once for each Navigation Update Tool.

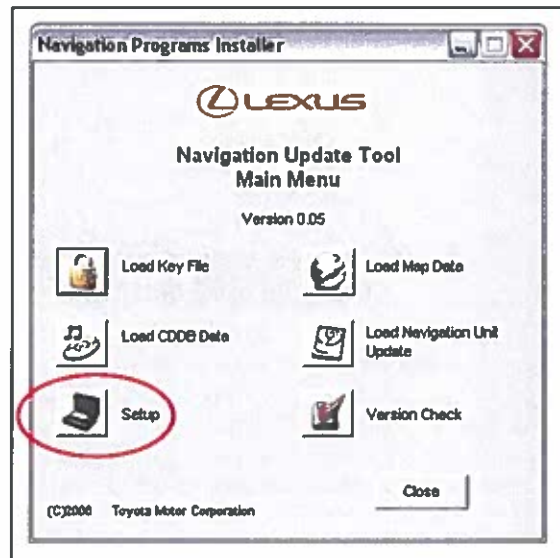
1. Open the *Navigation Programs Installer* by clicking the icon on the desktop.

Figure 7.



2. Click *Setup* in the *Navigation Update Tool Main Menu*.

Figure 8.



HDD Navigation Program Setup

Tool Setup (Continued)

3. Connect the Navigation Update Tool.
 - A. Make sure the USB cable is secured in both the PC and the Navigation Update Tool USB ports.
 - B. Connect A/C power supply.
 - C. Turn power ON.
 - D. Click *Continue*.

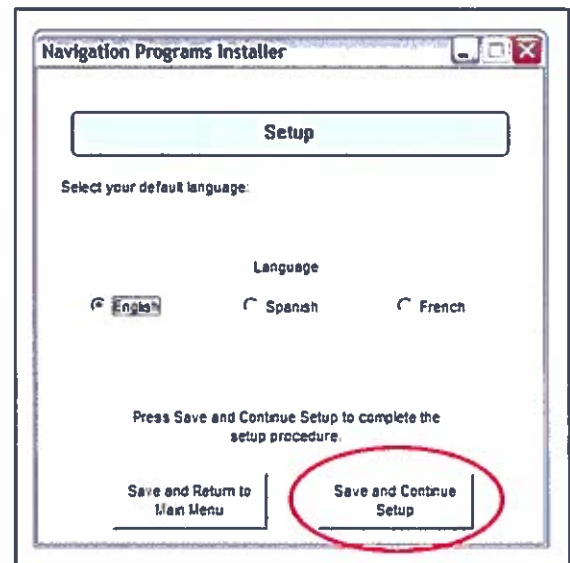
Figure 9.



1	To PC
2	To A/C Power

4. Click the desired default language radio button and click *Save and Continue Setup*.

Figure 10.



HDD Navigation Program Setup

Tool Setup (Continued)

5. Allow Setup to complete (it may require up to 1 hour).

NOTE

Do NOT turn the PC or Navigation Update Tool OFF during Setup.

Figure 11.



6. Confirm that the Setup screen appears with "Setup has finished successfully."

If an error screen appears, please consult the applicable Navigation Update Tool Operating Manual on TIS: *Diagnostics – Tools & Equipment – Navigation – Reference Documents*:

- [Windows 7/8 Navigation Update Tool Operating Manual](#)
- [Windows XP Navigation Update Tool Operating Manual](#)

Figure 12.



