



TRP Number	Revision Level	Date	Group Number	
T1559	A	31-OCT-2014		
Expiration Date (U.S. and Canada)		Expiration Date (International)		
01-MAR-2015		01-MAR-2015		
Engine Family	Fuel System	Plant	Build Date	
			From	To
ISX11.9	CM2250			
ISX11.9	CM2250			



Temporary Repair Practice

ISX12 CM2250 Fuel Pump Repair Instructions for Ceramic Plunger Fracture or Roller/Cam Damage TRP

Attention

- U.S / Canadian Distr./Branches and Div. Offices
- Worldwide distr./ branches and Div./Reg Offices
- U.S / Canadian Dealers

This is to revise and replace TRP 1559, dated 15-Oct-2014. This revision is to:

1. Inform the field that the ESNs over 5 years/500,000 miles do **not** need to file a claim to be removed from the field action, and
2. Change the attachment to show marking instruction.

If additional information is required, contact your Cummins Warranty Operations Group Leader.

Description

This TRP is being issued to direct the actions for certain fuel pump repairs on ISX12 CM2250 engines that have ceramic pumping plungers in the high pressure pump. The repair action will apply when either the ceramic plunger(s) is (are) fractured **OR** damage to the roller / tappet assembly is found.

NOTE: For engines still within coverage, a separate claim should be filed to Warranty for reimbursement of the fuel pump replacement portion of the repair. In all other cases the entire work completed can be filed to this TRP.

Action

In order to qualify for repair under this field action, an engine:

1. will be covered Regardless of coverage status, and
2. **must** be on the attached ESN list, and
3. **must** be within the 5yr / 500,000 miles in service window for ISX12 Automotive applications.

After verifying that the engine meets the above requirements, perform the following actions:

1. Please refer to TSB# 140019 for instructions to follow for inspection and repair procedures.
2. Mark the fuel pump head serial number with white paint, as illustrated in Attachment B, to signify completion of this field action.

NOTE: For automotive applications, engines repaired using the instructions within this TRP will be placed on a list that may cover them against future ceramic or metal debris damage to the lubrication system. Potential eligibility of coverage is within 4 months or 30,000 miles, from the fail date associated with this TRP, whichever occurs first.

Material Disposition

1. Material removed as the result of this field action that have core value should be sent to ReCon unless flagged by the Enhanced Parts Return (EPR) process.
2. Material removed with no core value should be scrapped.
3. Parts flagged via the EPR process should be returned via the normal EPR return process. To the following address:

Cummins Service Support Center

Receiving Location RL35

910 S Marr Road

Please contact ssc@cummins.com for EPR related questions.

Please include a copy of the claim paperwork and a material return tag with the returned parts. Include the ESN number, the TRP# 1559, and the claim number on the material return tag.

Reimbursements

Parts

NOTE: The fuel pump will be used on all repairs, but is listed as optional as it will only be claimed to the TRP when an ESN is out of Base Warranty Coverage.

NOTE: Additional parts, such as gaskets and fasteners, that are required to complete the repair, but not listed, may be claimed if sufficiently explained in the claim narrative.

The following parts are covered under this field action:

Part Number	Quantity	Description
287292900PX	1	PMP,FUL (OPTIONAL)
288322400	1	COR,CLR (OPTIONAL)
382032000	1	PLN,VLV (OPTIONAL)
495262900	1	THM (OPTIONAL)
496608400	2	SAL,RNG (OPTIONAL)
497521500	1	GSK,HSG (OPTIONAL)

NOTE: All SRTs are optional. Claim ONLY the appropriate SRTs for the application.

NOTE: Per TSB140019, if tappet damage is found the lube oil must be drained and filled two times. The first oil change is covered under the following SRTs:

- 07-551, Lubricating Oil Cooler Assembly - Remove and Install - Includes lube oil drain and fill.
- 07-108, Lubricating Oil Filter Head - Includes lube filter remove and install.

NOTE: Use SRT 07-801, Lubricating Oil and Filter(s) - Change, for the second lube oil and filter change.

Labor using applicable Access Code and Time:

SRT Code	Description	Time (hrs)
00-90X	Administrative time	
05-176	Fuel Pump Head - Remove and Install	
05-177	Fuel Pump - Remove and Install (Common Rail Fuel System)	
05-200	Fuel Pump Head - Inspect	
05-804	Fuel Pump - Gear Pump Pressure and Fuel Filter Restriction Test (Common Rail Fuel System)	
05-805	High-Pressure Injector Return Flow Test	

05-806	High-Pressure Fuel Pump Return Flow Test
05-807	High-Pressure Fuel Rail Return Flow Test
06-443	Air in Fuel - Test
07-102	Lubricating Oil Filter Bypass Valve - Remove and Install
07-108	Lubricating Oil Filter Head - Remove and Install
07-127	Lubricating Oil Thermostat - Remove and Install
07-401	Lubricating Oil Cooler Assembly - Clean and Test for Reuse
07-551	Lubricating Oil Cooler Assembly - Remove and Install (With EGR)
07-801	Lubricating Oil and Filter(s) - Change
11-039	Aftertreatment Stationary Regeneration
FC-030	Troubleshoot - Active Fault Codes 559, 1676, 1898, 2215, 2219, 2772, 2773 3597

Travel

Travel is covered under this field action. Towing is covered under this field action.

Other Claimables

Consumables are covered under this field action.

NOTE: This TRP will allow up to \$300 for new oil and up to \$100 for new oil filters.

Claim Instructions

For Cummins Dealers, claims for this TRP **must** be filed via **RAPIDSERVE™** Web (rsw.cummins.com). For information regarding **RAPIDSERVE™** Web, please reference the "Warranty" tab in QuickServe® Online. If there are additional questions, please contact your local Cummins Distributor.

Claim Codes	
Description	Code
Account Code:	65
Pay Code:	Distributor = X
Pay Code:	Dealer = D
Pay Code:	International = I
Failure Code:	WFHASI

Attachments

[Click here to see t1559-c_esn-list.xls](#)

[Click here to see t1559_pump_head_marking_after_campaign_completion-attach-b.pdf](#)

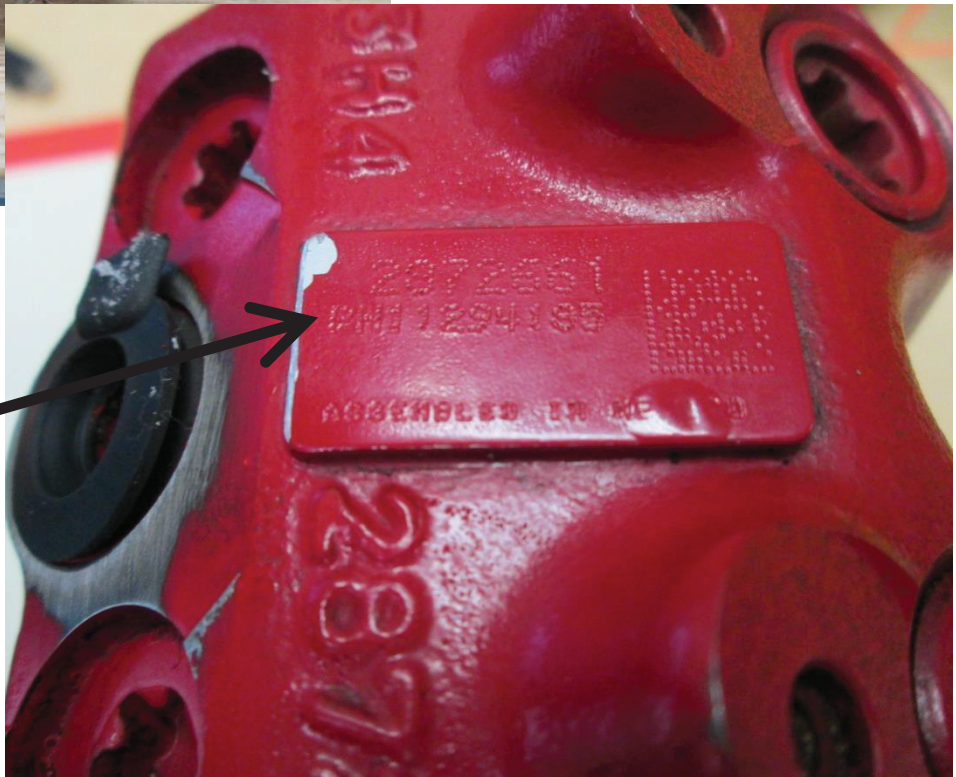
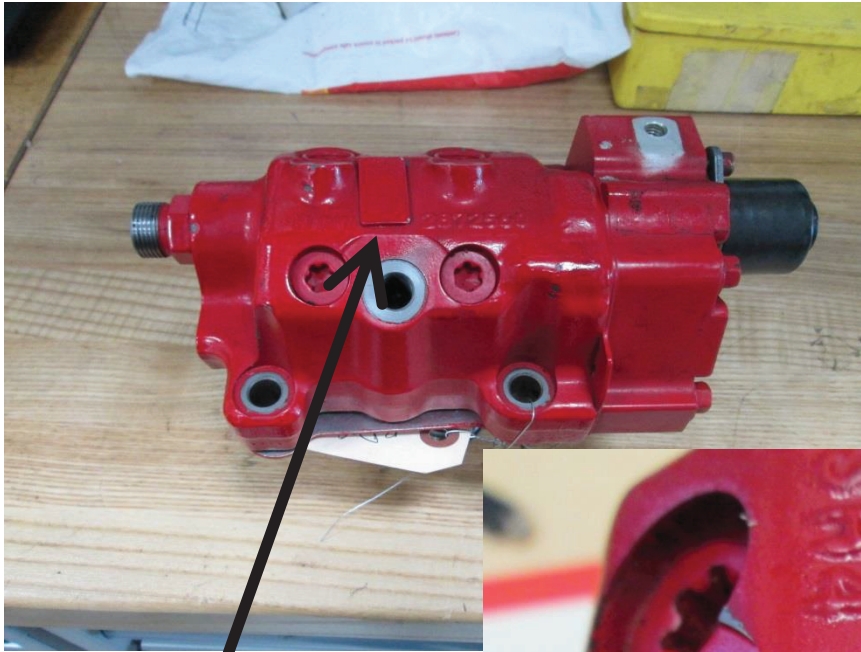
Last Modified: 31-Oct-2014

Copyright © 2000-2010 Cummins Inc. All rights reserved.

Fuel Pump Head Serial Number Check and Fuel Pump Head Marking after Campaign Completion

Fuel Pump Head Serial Number format: 1T ##### or PH#####

- All Engine Serial Numbers on the campaign ESN list with Fuel Pump Head Serial Numbers starting with “1T” are eligible for this campaign
- Fuel Pump Head Serial Numbers higher than **PH130291035** are **NOT** eligible for this campaign.



Location of Fuel Pump Head Serial Number

Mark the Fuel Pump Head part number with a paint marker after completing the campaign.

