

| | |
|-----------------------------------------------------------------|--------------------------------|
| Subject: RATTLE NOISE FROM STEERING SYSTEM | Bulletin No: 06-001/13 |
| | Last Issued: 08/22/2013 |

BULLETIN NOTE

- This bulletin supersedes the previous bulletin 06-002/12, issued on 05/11/12. The **PART(S) and WARRANTY INFORMATION** have been revised.
- Changes are noted below in Red beside the change bar.

APPLICABLE MODEL(S)/VINS

2011-2012 Mazda2 vehicles with VINs lower than JM1 DE 1***** 140732 (produced before December 10, 2011)

DESCRIPTION

When driving straight on a rough road at approximately 6-19 mph (10-30 km/h), some vehicles may exhibit a rattle noise from the front passenger side floor.

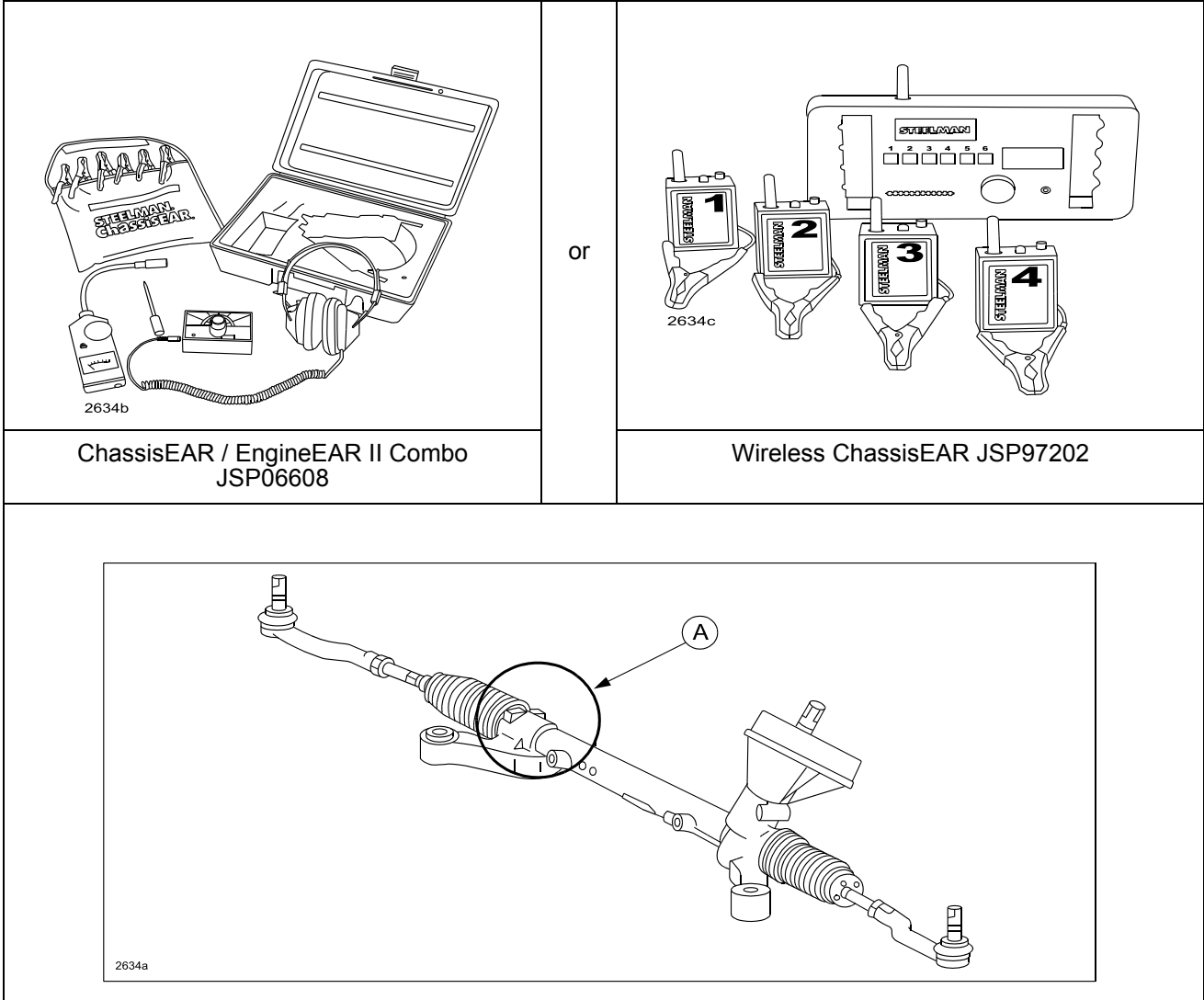
Customers having this concern should have their vehicle repaired using the following repair procedure.

REPAIR PROCEDURE

1. Verify customer concern matches all of the following conditions:
 - The noise occurs when driving on rough road at approximately 6-19 mph (10-30 km/h).
 - The noise is more pronounced in the front passenger side floor rather than the driver side floor.
 - The noise does not occur on flat and smooth road.
 - The noise continues even after rotating the steering wheel in any direction.

2. Use Special Service Tool (SST) ChassisEAR / EngineEAR II Combo JSP06608 or Wireless ChassisEAR JSP97202 to confirm rattle noise is coming from the rack end bushing (A) (shown below):

NOTE: SST JSP06608 and JSP97202 are available for purchase on M-Store.



3. If step 1-2 apply, replace the steering gear assembly according to MS3 online or Workshop Manual (section 06-13 STEERING GEAR AND LINKAGE REMOVAL/INSTALLATION).
4. Verify repair.

PART(S) INFORMATION

| Part Number | Description | Qty. |
|--------------|---------------|------|
| DF95-32-110A | Steering Gear | 1 |

WARRANTY INFORMATION

NOTE:

- This warranty information applies only to verified customer complaints on vehicles eligible for warranty repair.
- This repair will be covered under Mazda's New Vehicle Limited Warranty term.
- Additional diagnostic time cannot be claimed for this repair.

| | |
|---------------------------------|---------------------|
| Warranty Type | A |
| Symptom Code | 82 |
| Damage Code | 97 |
| Part Number Main Cause | DF95-32-110A |
| Quantity | 1 |
| Operation Number / Labor Hours: | XXJ9KXRX / 1.9 Hrs. |

NOTE: Front wheel alignment time is included in the labor hour shown above.