



**SERVICE ADVISORY # 13-188**

Vantage Roof Tape Repair

It has been determined that the Sika® tape used on the front and rear roof transition seams and slide out has exhibited cracks in the outer layer and may allow water to leak into the unit increasing the risk of water damage. It is important that the remedial action be performed as soon as reasonably possible. Due to the damage that may occur if this campaign is not completed, all work must be performed and claims submitted by May 31, 2013.

**Models Included:** 2012 Vantage 25RBS, 29RLS, 32FLS, 32SQB  
2013 Vantage 19UL, 25RBS, 29RLS, 32FLS, 32RES

**Serial Number Ranges:** 2012 CF300000, CK300001 – CK300357  
2013 DK300000 – DK300143

**Parts Required:** (1) KRV # 380411-Tape kit  
- KRV # 343976 Sealant - Silicone - Fern Gray - 10 oz - Tempro 645

**Tools Required:** - Tape Measure - Grease pencil - Naphtha Solvent - Shop rags  
- Utility knife - Screw Gun - Square Bit - Alcohol cleaning solution

**REPAIR INSTRUCTIONS**

**ONE: PREPARING THE TRAILER**

**Step 1** Locate the trailer on a level, flat and hard surface. Chock the wheels.

**TWO: INSPECTION AND PREPERATION**

**Step 1** Inspect the front and rear roof to end cap tape seams for damage, peeling, etc. The new installation will overlay the existing tape wherever possible. Trim any loose or curled tape, if present, to provide a flat, smooth surface for overlayment of new tape. See Figure 1.



Fig. 1



Fig. 2

**Step 2** Trim Silicone end beads flat and smooth. Use care not to puncture the roof membrane. Trimming the existing silicone bead will allow for a smoother, lower profile application of new silicone. See Figure 2.

**Step 3** Inspect the overall condition of the tape and proceed accordingly. See figure 3

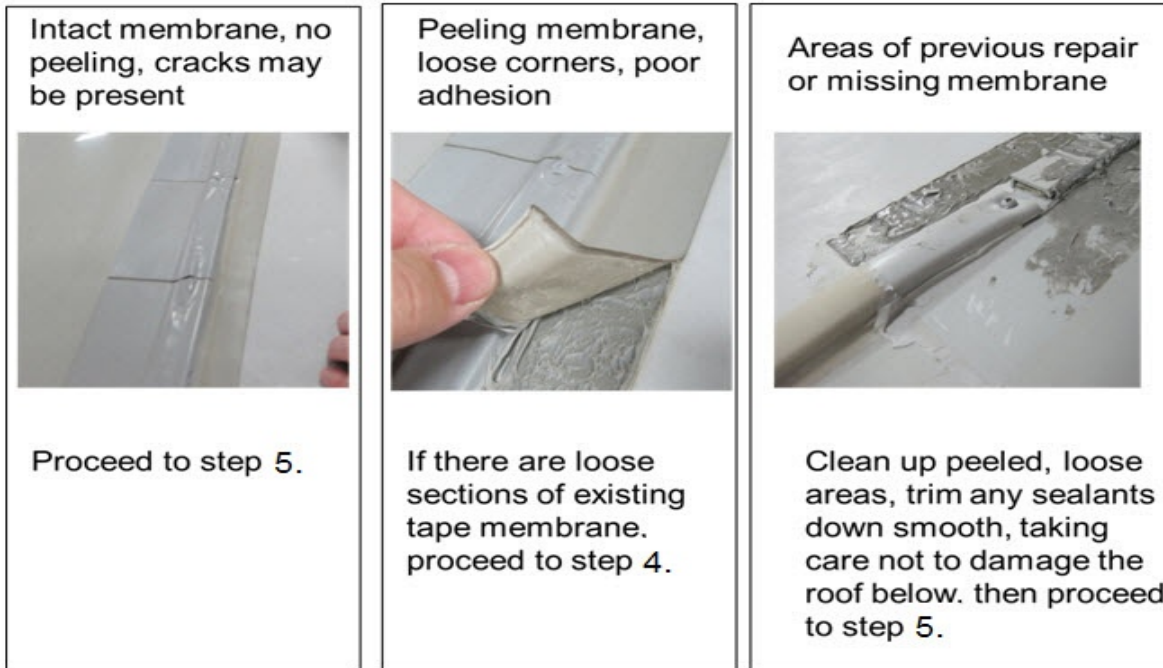


Fig. 3

**Step 4** If possible, remove the top film membrane from the old tape. To do this, try to separate the membrane at a corner and then slowly and steadily pull up at a 90 degree angle. Do not continue if removing the membrane disrupts the adhesive layer underneath, or if residue from the adhesive layer remains on the interior surface of the membrane. Cut any loose membrane off even with the existing tape to ensure an even, flat bonding surface. See Figure 4.

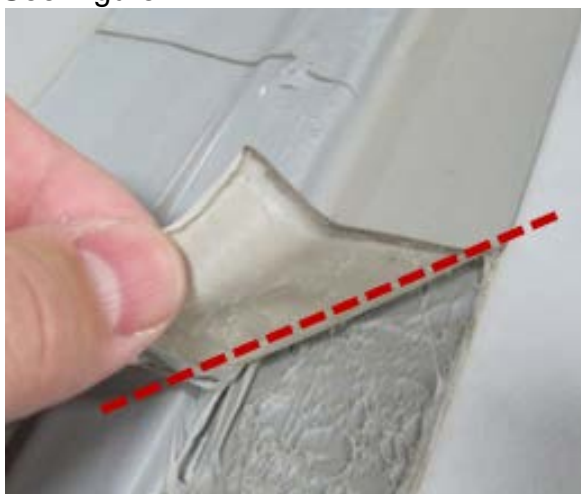


Fig. 4



Fig. 5

**Step 5** Where the top film remains intact, clean the bonding area with Naphtha by wiping with a clean cloth (do not use red shop towels). Clean an area 3-4" past the existing tape on both the EPDM roof side and the fiberglass cap side. Allow Naphtha to flash off for 5 minutes. Areas where previous mastic is exposed can be wiped in the same manner. Allow Naphtha to flash off for 5 minutes. See Figure 5 above.

**Step 6** With a grease pencil, mark an alignment mark 2" out from the edge of the existing tape outward on the fiberglass cap side of the tape. These marks will be a guide for applying the new tape so mark about every 18" across the RV. See figure 6.

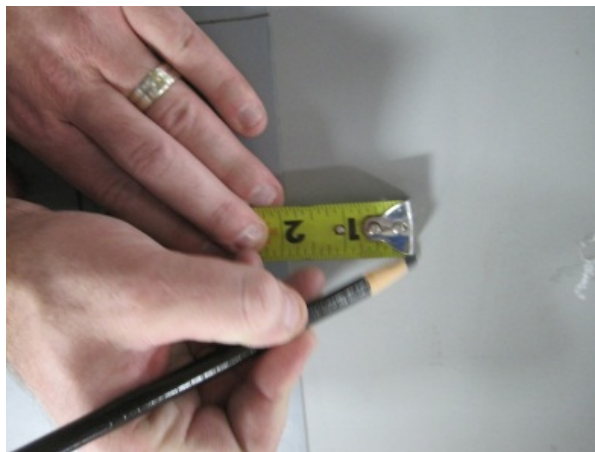


Fig. 6

**Step 7** Repeat step 1 through step 5 for both front and rear tape applications.

**Step 8** Follow step 1 through step 4 to inspect and repair the slideout roof tape.

**THREE: TAPE APPLICATION**

**Step 1** Dry fit the new tape (with backing still on) to ensure that it fits between the end applications of silicone sealant. Trim if necessary so the new tape will fit against the existing sealant. See figure 7.

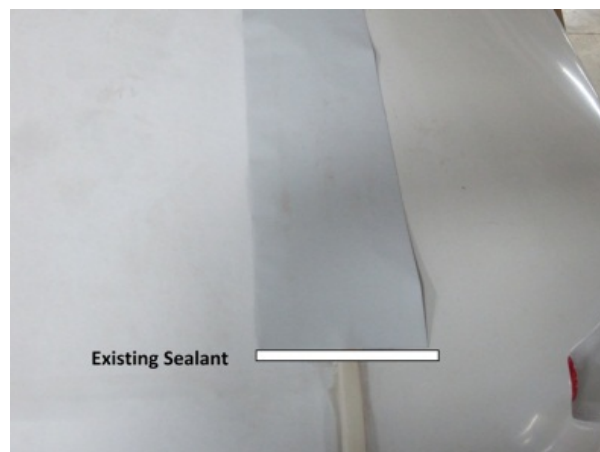


Fig. 7

- Step 2** Starting on one end, peel back release paper and adhere new tape, using care to line up the edge with the 2" hash marks made previously. Adhere to the high point (above the aluminum trim) in middle first, then work the tape tightly around and down onto the fiberglass cap and the EPDM roof membrane. Try not to stretch the tape during installation. See figure 8 & 9.



Fig. 8



Fig. 9

- Step 3** Use a clean rag to compress out the tape. A small roller can also be used to press out the tape to ensure a tight fit. Use care not to crease the tape during install. See Figure 10.

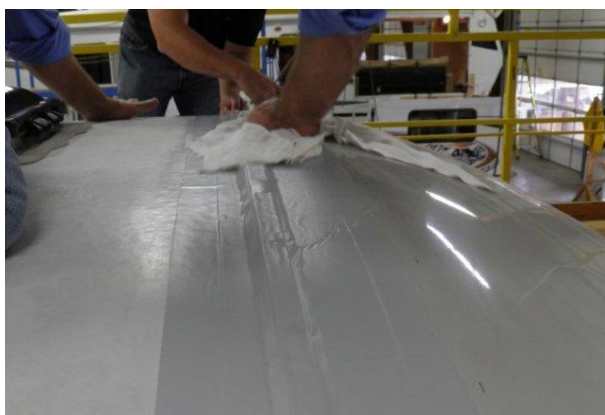


Fig. 10



Fig. 11

- Step 4** Finished application should be a snug overlay atop the existing tape and extrusion. See figure 11 above.

- Step 5** Apply new silicone sealant over the edge of the newly applied tape. Tool the new sealant smooth and overlap the edge of the tape a minimum 1/2". For aesthetics, completely cover the existing silicone as well. See figure 12.



Fig. 12

**Step 6** Repeat Step 1 through Step 5 on both front and rear tape applications.

#### **FOUR: SLIDEOUT ROOF REPAIR**

**Step 1** Inspect the slide out roof joint tape seam as explained in section 2. The new installation will overlay the existing tape wherever possible.

**Step 2** Remove the screws from the slide out roof line molding. Cut the silicone seal on the roof line molding. Separate the roof line molding from the side of the slide out to allow access to the roof tape. Clean the slide out sidewall and roof tape so new tape can be applied. Repeat for the other end of the slide out. Start the new membrane even with the edge of the original roof seal membrane under the roof line molding. Apply the membrane against the inside edge of the exterior fascia along the length of the slide out roof. Cut the membrane and wrap it over the edge of the slide out to finish flush with the bottom edge of the original roof seal membrane. See figure 14 & 15.



Fig 14



Fig. 15

- Step 4** Use a clean rag to compress out the tape. A small roller can also be used to press out the tape to ensure a tight fit. Use care not to crease the tape during install.
- Step 5** Finished application should be a snug overlay atop the existing tape and extrusion.
- Step 6** Clean the roof line molding and roof membrane to prep for resealing. Fill the screw holes with silicone and remount the roof line molding. Reseal the roof line molding See figure 17 & 18.



Fig. 17



Fig. 18

#### **FIVE: WARRANTY REIMBURSEMENT**

Submit the claim on Key Express or on a Keystone Warranty claim form using **Flat Rate Code # 7118842D** with **Service Advisory # 13-188** noted in the customer complaint section of the form. The amount of time authorized for this repair is 1.2 hours.

**It is important that the remedial action be performed as soon as reasonably possible. Due to the damage that may occur if this campaign is not completed, all work must be performed and claims submitted by May 31, 2013.**

Please call Keystone RV Customer Service at **(866) 273-1452** if you have any questions.

