

RIDE THE DUCKS INTERNATIONAL
Fleet Operations & Safety
2320 West Highway 76
Branson MO 65616

Bulletin No. SB-00-17-13
Release Date: 12/2/13
Effective Date: 12/2/13
Supersedes: N/A
Completion Date:
During or before 2014
Applicable to: All Stretch Ducks
Total Pages: 8

SERVICE BULLETIN

REASON FOR RELEASE: The power source of the fuel switch that operates both fuel pumps (main & auxiliary) run through the same electrical fuse. Should this single fuse trip/blow both pumps will fail to operate. This Service Bulletin directs a change in the electrical arrangement of the fuel pumps so that each pump is provided power from a separate electrical source. Should one pump fail the secondary pump will remain operable.

Directions:

1. Review the following links that are applicable to this modification:
[Electrical Plans](#) and RTD [Letter of Request](#)
2. Should you have any questions or concerns regarding this modification contact: [Jay Hiett](#)
3. After familiarizing yourself with this modification, notify your local OCMI and requests approval to comply with this service bulletin.
4. Your local OCMI should approve this modification based on existing [Sector UMR Approval Letter](#)
5. Should you experience difficulty in seeking USCG approval contact [RTDI Fleet Operations](#) and we will assist you.
6. In addition to the electrical modifications you are also being directed to update the ducks electrical distribution [Fuse List](#).

Note #1: Later model Stretch Duck have a single throw / single pole switch installed. This switch must be changed to a double throw / double pole switch. Contact [RTDI Parts Department](#) for switch information.

Note #2 : In addition to the links above we have also provided copies of this information on pages 2-6.

Page 2: [Electrical Plans](#)

NOTE: All work must be performed by qualified personnel. Use only authorized components, specified or provided by Ride The Ducks. All applicable OSHA safety standards and safe industry practices must be observed. Observe all safety information contained in the manufacturer's manuals. Make available this bulletin and all related technical information to personnel using the equipment.

[CONTACT US VIA EMAIL](#)
RTDI FLEET OPS HOTLINE: 417 266 7676
RTDI PARTS: 417 266 7626

RIDE THE DUCKS INTERNATIONAL

Fleet Operations & Safety
2320 West Highway 76
Branson MO 65616

Bulletin No. SB-00-17-13

Release Date: 12/2/13

Effective Date: 12/2/13

Supersedes: N/A

Completion Date:

During or before 2014

Applicable to: All Stretch Ducks

Total Pages: 8

Page 3: [RTD Letter of Request](#)

Page 4: [Sector UMR Approval Letter](#)

Page 5: [Fuse Lists](#)

Electrical Plans

NOTE: All work must be performed by qualified personnel. Use only authorized components, specified or provided by Ride The Ducks. All applicable OSHA safety standards and safe industry practices must be observed. Observe all safety information contained in the manufacturer's manuals. Make available this bulletin and all related technical information to personnel using the equipment.

[CONTACT US VIA EMAIL](#)

RTDI FLEET OPS HOTLINE: 417 266 7676

RTDI PARTS: 417 266 7626

RIDE THE DUCKS INTERNATIONAL
 Fleet Operations & Safety
 2320 West Highway 76
 Branson MO 65616

Bulletin No. SB-00-17-13

Release Date: 12/2/13

Effective Date: 12/2/13

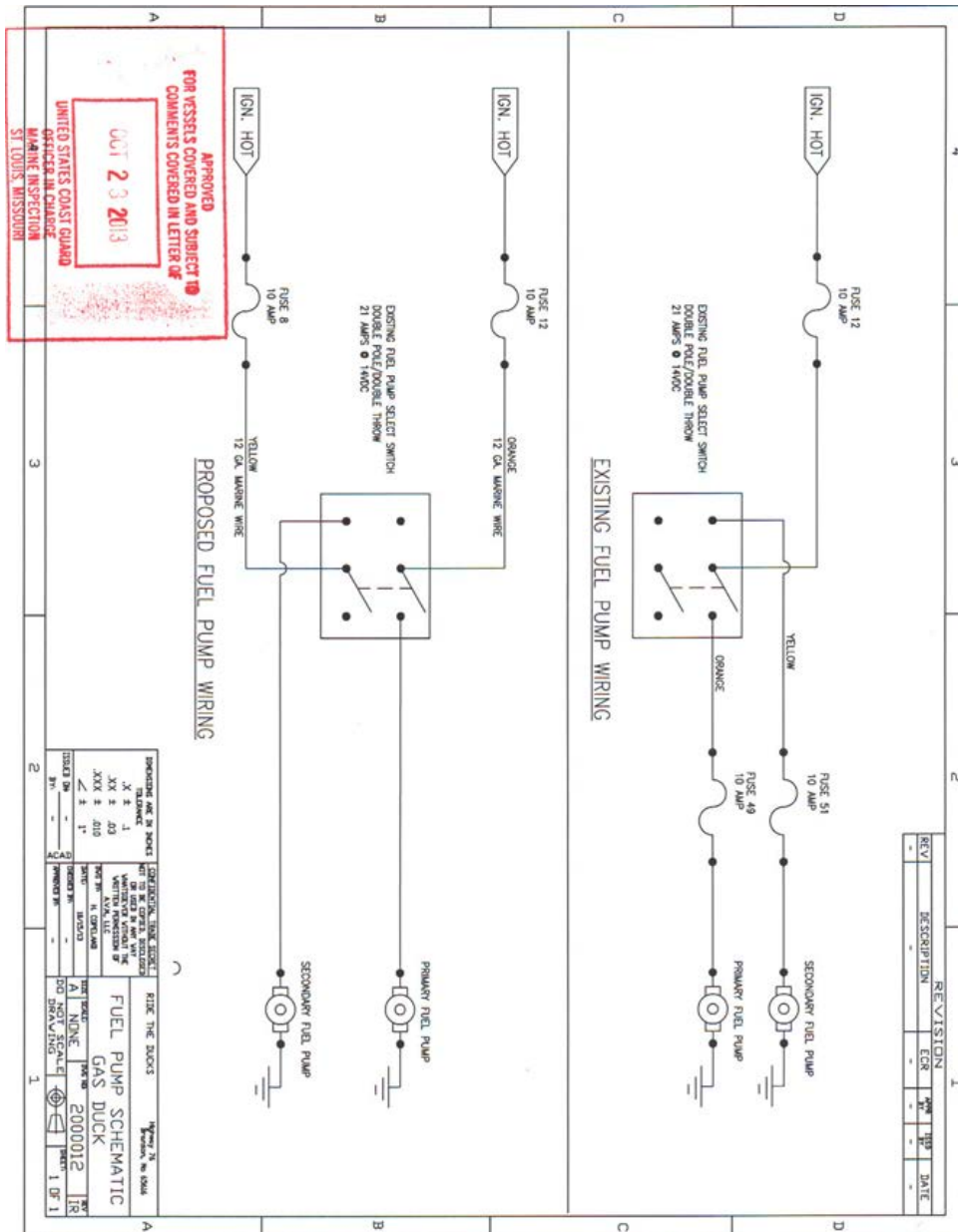
Supersedes: N/A

Completion Date:

During or before 2014

Applicable to: All Stretch Ducks

Total Pages: 8



NOTE: All work must be performed by qualified personnel. Use only authorized components, specified or provided by Ride The Ducks. All applicable OSHA safety standards and safe industry practices must be observed. Observe all safety information contained in the manufacturer's manuals. Make available this bulletin and all related technical information to personnel using the equipment.

[CONTACT US VIA EMAIL](mailto:info@ridetheducks.com)

RTDI FLEET OPS HOTLINE: 417 266 7676

RTDI PARTS: 417 266 7626

RIDE THE DUCKS INTERNATIONAL
Fleet Operations & Safety
2320 West Highway 76
Branson MO 65616

Bulletin No. SB-00-17-13
Release Date: 12/2/13
Effective Date: 12/2/13
Supersedes: N/A
Completion Date:
During or before 2014
Applicable to: All Stretch Ducks
Total Pages: 8

RTD Letter of Requests

NOTE: All work must be performed by qualified personnel. Use only authorized components, specified or provided by Ride The Ducks. All applicable OSHA safety standards and safe industry practices must be observed. Observe all safety information contained in the manufacturer's manuals. Make available this bulletin and all related technical information to personnel using the equipment.

[CONTACT US VIA EMAIL](#)
RTDI FLEET OPS HOTLINE: 417 266 7676
RTDI PARTS: 417 266 7626

RIDE THE DUCKS INTERNATIONAL
Fleet Operations & Safety
2320 West Highway 76
Branson MO 65616

Bulletin No. SB-00-17-13

Release Date: 12/2/13

Effective Date: 12/2/13

Supersedes: N/A

Completion Date:

During or before 2014

Applicable to: All Stretch Ducks

Total Pages: 8

Karnuth, Franz F CIV

From: jphielt@bransonducks.com on behalf of Jay Hielt [jphielt@bransonducks.com]
Sent: Thursday, October 17, 2013 3:43 PM
To: Karnuth, Franz F CIV
Subject: Fuel Pump Electrical Circuit Upgrade-Stretch Duck
Attachments: Fuel pump circuit 2000012_IR.pdf

Follow Up Flag: Follow up
Flag Status: Flagged

Dear Sirs,

Ride the Ducks respectfully requests the review and approval of a Fuel Pump Electrical Circuit Upgrade. The enclosed attachment shows both the existing and proposed fuel pump wiring. The shortcoming of the existing circuit is that both fuel pumps receive power through Fuse #12. Should Fuse #12 blow, power to both pumps is lost. The fuel pump select switch is a double pole/ double throw toggle switch. The existing circuit utilizes only one half of this switch.

Recognizing that the existing double pole/double throw switch is two separate switches activated by a common toggle allows its use in the proposed change to the fuel pump circuit. The proposed fuel pump wiring schematic shows the complete separation of the two fuel pump circuits utilizing separate sources of power. There are no changes to voltage, resistance, electrical load, component location or operator usage. All wire used will be marine grade and the same gauge and color as original. This modification will be performed using material and practices in accordance with industry standards and found acceptable to the United States Coast Guard.

Respectfully submitted,

Jay Hielt
Senior Fleet Maintenance Manager
Ride The Ducks
2320 W. Hwy 76
Branson, Mo. 65616
Office: 417. 266. 7608
Cell: 417. 230. 0518



NOTE: All work must be performed by qualified personnel. Use only authorized components, specified or provided by Ride The Ducks. All applicable OSHA safety standards and safe industry practices must be observed. Observe all safety information contained in the manufacturer's manuals. Make available this bulletin and all related technical information to personnel using the equipment.

[CONTACT US VIA EMAIL](#)

RTDI FLEET OPS HOTLINE: 417 266 7676

RTDI PARTS: 417 266 7626

RIDE THE DUCKS INTERNATIONAL
Fleet Operations & Safety
2320 West Highway 76
Branson MO 65616

Bulletin No. SB-00-17-13

Release Date: 12/2/13

Effective Date: 12/2/13

Supersedes: N/A

Completion Date:

During or before 2014

Applicable to: All Stretch Ducks

Total Pages: 8

Sector UMR Approval Letter



Officer in Charge, Marine Inspection
United States Coast Guard
Sector Upper Mississippi River

1222 Spruce St., Suite 7.103
St. Louis, MO 63103-2846
Staff Symbol: (Sp)
Phone: (314) 269-2560
Fax: (314) 269-2742

16714
October 23, 2013

Ride the Ducks International, LLC
Attn: Mr. Jay Hiatt
2320 West Highway 76
Branson, MO 65616

Subj: FUEL PUMP ELECTRICAL CURCUIT

Ref: (a) Dwg. No. 200012, Fuel Pump Schematic Gas Duck, dated October 15, 2013

Dear Mr. Hiatt:

We reviewed reference (a) as per your request for compliance with electrical requirements of 46 CFR Subchapter T. Accordingly, reference (a) is "Approved" for the following vessels:

STRETCH DUCK 01 (CG441083)	STRETCH DUCK 02 (CG456292)
STRETCH DUCK 03 (CG458284)	STRETCH DUCK 04 (CG248287)
STRETCH DUCK 07 (CG248292)	STRETCH DUCK 08 (CG374388)
STRETCH DUCK 09 (CG393621)	STRETCH DUCK 12 (CG279363)
STRETCH DUCK 14 (CG40194)	STRETCH DUCK 16 (CG511655)
STRETCH DUCK 17 (CG30659)	STRETCH DUCK 18 (CG511293)
STRETCH DUCK 19 (CG560409)	STRETCH DUCK 20 (CG511167)
STRETCH DUCK 25 (CG35320663)	STRETCH DUCK 26 (CG595361)
STRETCH DUCK 27 (CG607145)	STRETCH DUCK 31 (CG35316753)
STRETCH DUCK 35 (CG628449)	STRETCH DUCK 38 (CG643935)
STRETCH DUCK 54 (CG733920)	STRETCH DUCK 56 (CG799481)

The installation, testing, and workmanship shall be to the satisfaction of the attending Coast Guard Marine Inspector. If you have any questions regarding this matter, please contact my Inspection Division Chief, Lieutenant Commander Christopher Tantillo, at (314) 269-2568.

Sincerely,

B. L. BLACK

Copy: Vessel File

NOTE: All work must be performed by qualified personnel. Use only authorized components, specified or provided by Ride The Ducks. All applicable OSHA safety standards and safe industry practices must be observed. Observe all safety information contained in the manufacturer's manuals. Make available this bulletin and all related technical information to personnel using the equipment.

[CONTACT US VIA EMAIL](#)

RTDI FLEET OPS HOTLINE: 417 266 7676

RTDI PARTS: 417 266 7626

RIDE THE DUCKS INTERNATIONAL

Fleet Operations & Safety

2320 West Highway 76

Branson MO 65616

Bulletin No. SB-00-17-13

Release Date: 12/2/13

Effective Date: 12/2/13

Supersedes: N/A

Completion Date:

During or before 2014

Applicable to: All Stretch Ducks

Total Pages: 8

Fuse Lists

NOTE: All work must be performed by qualified personnel. Use only authorized components, specified or provided by Ride The Ducks. All applicable OSHA safety standards and safe industry practices must be observed. Observe all safety information contained in the manufacturer's manuals. Make available this bulletin and all related technical information to personnel using the equipment.

[CONTACT US VIA EMAIL](#)

RTDI FLEET OPS HOTLINE: 417 266 7676

RTDI PARTS: 417 266 7626

RIDE THE DUCKS INTERNATIONAL
 Fleet Operations & Safety
 2320 West Highway 76
 Branson MO 65616

Bulletin No. SB-00-17-13

Release Date: 12/2/13

Effective Date: 12/2/13

Supersedes: N/A

Completion Date:

During or before 2014

Applicable to: All Stretch Ducks

Total Pages: 8

Fuse #	Amps	Size	Color	Function
1-36 Are Key Fused				
1	Empty			
2	Empty		Red	Alternator
3	10	14	Yellow / Black	Gauges
4	10	14	Red / Yellow	Wiper Power
5	Empty			
6	Empty			
7	20	14	Brown / Yellow	Aux Plug on Dash
8	10	12	Yellow	SECONDARY Fuel Pump
9	15	14	Blue / Pink	Rear Driver Side Bilge (Manual)
10	15	14	Gray / Pink	Rear Passenger Side Bilge (Manual)
11	10	14	Purple / Yellow	Passenger Side Flasher
12	10	12	ORANGE	PRIMARY Fuel Pump
13	15	14	Blue	Front Heater Blowers
14	15	12	Blue / White	Rear Heater Blowers
15	Empty			
16	1	14	White / Blue	Park Brake
17	1	14	White / Brown	Park Brake
18	Empty			
19	Empty	12	Red	Compressor
20	20CB	14	Red / Gray	Starter Button
21	20CB	14	Yellow / Brown	Headlight Power
22	15	14	Blue / White	Rear Driver Side Bilge (Auto)
23	15	14	Gray / White	Rear Passenger Side Bilge (Auto)
24	15	14	Pink / Gray	Center Driver Side Bilge (Auto)
25	Empty			
26	Empty			
27	10CB	14	Blue / Green	Left Side Curtain Power
28	10CB	14	Yellow / Gray	Right Side Curtain Power
29	Empty	14	Pink / Yellow	Center Passenger Side Bilge (Auto)
30	Empty			
31	10	14	Orange / Red	Brake Warning System
32	10	14	Red	High Water Alarm
33	40	14	Red	4-Wheel Drive Reverse
34	Empty			
35	10	14	Orange / Gray	Prop Switch Power
36	1	14	Blue / Orange	Vapor Detector Power
37-48 Are Constant Hot				
37	10	14	Yellow / Green	PA Power
38	10	14	Orange / White	Nav. Light & Dome Light Power
39	10	14	Brown / White	Driver Side Flasher
40	10	14	Red	Ignition Switch Feed
41	10	12	Red	Ignition Harness (Radio)
42	Empty	14	Purple / Orange	Ignition Harness (Blower)
43	10	14	Brown / Red	Brake Warning System
44	10	14	Red	Heat Sensor
45	Empty			
46	20	12	Green	Horn
47	5	12	White / Black	Park Brake
48	10	14	Orange / Red	Hyd Brake Switch
49-54 Are In-Line Fuses				
49	Empty			
50	Empty			
51	Empty			
52	Empty			
53	Empty			
54	Empty			

NOTE: All work must be performed by qualified personnel using the equipment.

Information not provided or provided by Ride The Ducks. Observe all safety information contained in the manufacturer's manuals. Make available this bulletin and all related technical information to personnel using the equipment.

[CONTACT US VIA EMAIL](#)
 RTDI FLEET OPS HOTLINE: 417 266 7676
 RTDI PARTS: 417 266 7626