

RIDE THE DUCKS INTERNATIONAL

Fleet Operations & Safety
2320 West Highway 76
Branson MO 65616

Bulletin No. SB-00-07-13

Release Date: 3/25/13

Effective Date: 3/25/13

Supersedes: N/A

Completion Date: **Immediate/Prior**

Applicable to: All Ducks

Total Pages: 7

SERVICE BULLETIN

REASON FOR RELEASE: Due to the inconsistency of USCG inspections in various RTD operational zones “*Not Requiring The Full Deployment*” of the Ducks Emergency Side Curtain Release System, discrepancies have been identified that may hamper the proper operation of the curtain deployment system. To observe these discrepancies, the Emergency Curtain system must be fully deployed. Zones that have required the full deployment of the Emergency Side Curtain system and are being tested during annual inspections are **NOT** subject to this Service Bulletin.

DIRECTIONS:

1. See attached photo information provided within this bulletin. [Pages 2-5](#)
2. Examine, adjust or replace side marker lights, curtains guides, electrical securements and/or other implements that may impede the proper operation of the full deployment of the curtain release system.
3. Conduct satisfactory testing of all Ducks curtain release systems. Until such time satisfactory testing is achieved, all (non tested) Ducks are restricted from **operating on the water with curtains in the down position**.
 - **Satisfactory Full Deployment Testing means:** A single operator pulls the safety pin, releases curtain drop handle and witnesses the curtain fall downward until fall terminates on padded test arms. [See Curtain Release Operation Instructions, pages 34 -35](#)
4. Submit to [RTDI Fleet Operations / Safety](#) documentation of the satisfactory testing of your Ducks curtain release systems. Provide vessel number, date of testing and results.
5. Maintain compliance with RTDI Policy regarding Duck modifications. [See RTDI Vehicle Modifications Policy](#)
6. Standardize the annual testing of the Ducks “Emergency Curtain Release System” to include fully

NOTE: All work must be performed by qualified personnel. Use only authorized components, specified or provided by Ride The Ducks. All applicable OSHA safety standards and safe industry practices must be observed. Observe all safety information contained in the manufacturers manuals. Make available this bulletin and all related technical information to personnel using the equipment.

[CONTACT US VIA EMAIL](#)

RTDI FLEET OPS HOTLINE: 417 266 7676

RTDI PARTS: 417 266 7626

RIDE THE DUCKS INTERNATIONAL

Fleet Operations & Safety
2320 West Highway 76
Branson MO 65616

Bulletin No. SB-00-07-13

Release Date: 3/25/13

Effective Date: 3/25/13

Supersedes: N/A

Completion Date: Immediate/Prior

Applicable to: All Ducks

Total Pages: 7

deploying the curtains until fall terminates on padded tests arms.

7. Notify RTDI Fleet Operations if you need assistance in complying with this bulletin.

[CONTACT RTDI Fleet Operations](#)

NOTE: Ducks may resume normal water operations once compliance with this Bulletin has been achieved.

NOTE: All work must be performed by qualified personnel. Use only authorized components, specified or provided by Ride The Ducks. All applicable OSHA safety standards and safe industry practices must be observed. Observe all safety information contained in the manufacturers manuals. Make available this bulletin and all related technical information to personnel using the equipment.

[CONTACT US VIA EMAIL](#)

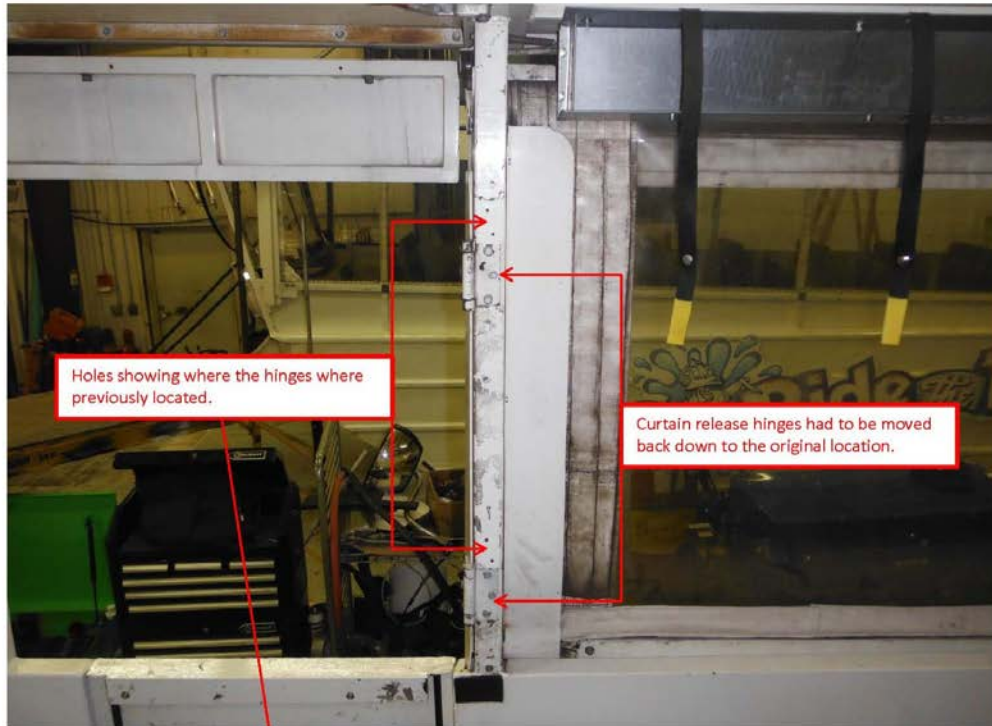
RTDI FLEET OPS HOTLINE: 417 266 7676

RTDI PARTS: 417 266 7626

RIDE THE DUCKS INTERNATIONAL
Fleet Operations & Safety
2320 West Highway 76
Branson MO 65616

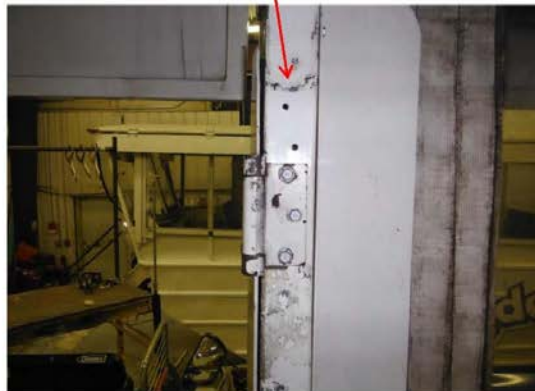
Bulletin No. SB-00-07-13
Release Date: 3/25/13
Effective Date: 3/25/13
Supersedes: N/A
Completion Date: **Immediate/Prior**
Applicable to: All Ducks
Total Pages: 7

Emergency Curtain Release System



Holes showing where the hinges were previously located.

Curtain release hinges had to be moved back down to the original location.



With the vertical curtain guides and hinges located in the upper position, the vertical curtain guides hit the upper sign preventing them from opening.

NOTE: All work on Ride The Duck information can be found on personnel use

*provided by
provide all safety
information to*

[CONTACT US VIA EMAIL](#)
RTDI FLEET OPS HOTLINE: 417 266 7676
RTDI PARTS: 417 266 7626

RIDE THE DUCKS INTERNATIONAL

Fleet Operations & Safety
2320 West Highway 76
Branson MO 65616

Bulletin No. SB-00-07-13

Release Date: 3/25/13

Effective Date: 3/25/13

Supersedes: N/A

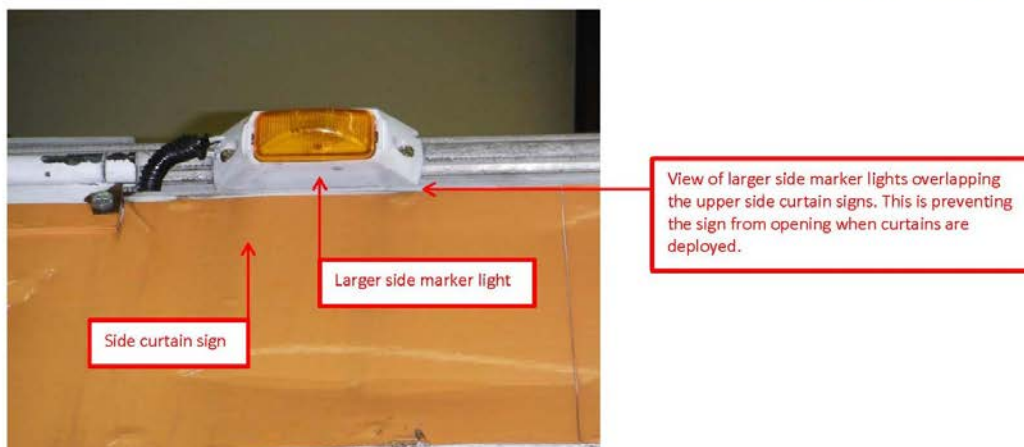
Completion Date: **Immediate/Prior**

Applicable to: All Ducks

Total Pages: 7

Emergency Curtain Release System

SIDE MARKER LIGHT TYPE AND INSTALLATION DISCREPANCY



NOTE: All work on Ride The Duck information can be provided by personnel using this information to

*provided by
provide all safety
information to*

CONTACT US VIA EMAIL

RTDI FLEET OPS HOTLINE: 417 266 7676

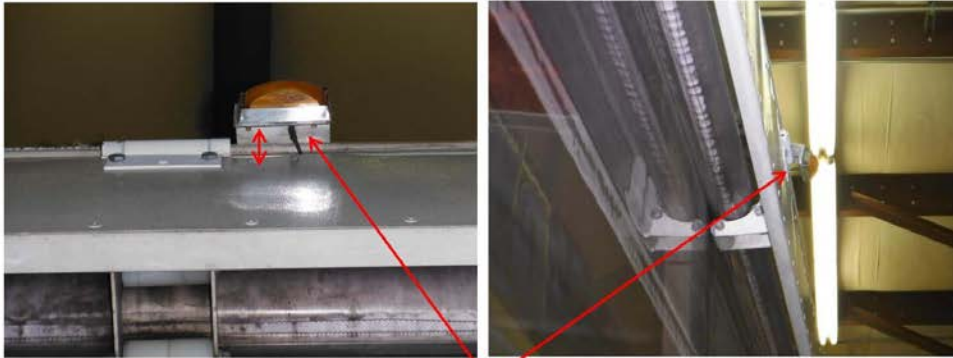
RTDI PARTS: 417 266 7626

RIDE THE DUCKS INTERNATIONAL
Fleet Operations & Safety
2320 West Highway 76
Branson MO 65616

Bulletin No. SB-00-07-13
Release Date: 3/25/13
Effective Date: 3/25/13
Supersedes: N/A
Completion Date: **Immediate/Prior**
Applicable to: All Ducks
Total Pages: 7

Emergency Curtain Release System

PROPER INSTALLATION OF SIDE MARKER LIGHTS



Marker lights must be set out away from upper sign, allowing the signs to fully open during curtain release deployment.



Later model Ducks have flush mounted marker lights and are also approved

*specified or provided by
observed. Observe all safety
and technical information to*

[CONTACT US VIA EMAIL](#)
RTDI FLEET OPS HOTLINE: 417 266 7676
RTDI PARTS: 417 266 7626

RIDE THE DUCKS INTERNATIONAL

Fleet Operations & Safety
2320 West Highway 76
Branson MO 65616

Bulletin No. SB-00-07-13

Release Date: 3/25/13

Effective Date: 3/25/13

Supersedes: N/A

Completion Date: Immediate/Prior

Applicable to: All Ducks

Total Pages: 7

NOTE: All work must be performed by qualified personnel. Use only authorized components, specified or provided by Ride The Ducks. All applicable OSHA safety standards and safe industry practices must be observed. Observe all safety information contained in the manufacturers manuals. Make available this bulletin and all related technical information to personnel using the equipment.

[CONTACT US VIA EMAIL](#)

RTDI FLEET OPS HOTLINE: 417 266 7676

RTDI PARTS: 417 266 7626

RIDE THE DUCKS INTERNATIONAL
Fleet Operations & Safety
2320 West Highway 76
Branson MO 65616

Bulletin No. SB-00-07-13
Release Date: 3/25/13
Effective Date: 3/25/13
Supersedes: N/A
Completion Date: **Immediate/Prior**
Applicable to: All Ducks
Total Pages: 7

Emergency Curtain Release System

SECURING OF CURTAIN MOTOR ELECTRICAL CABLE DISCREPANCY



The electrical cable that powers the curtain motor is permanently secured which will not allow the curtain sign to flip out during curtain release deployment.

PROPER INSTALLATION OF ELECTRIC CABLE



The electrical cable should be secured by Velcro. This allows the electrical cable to break free during curtain release deployment.

NOTE: All Ride The Duck information is provided by all safety personnel.

ded by all safety personnel to