



Accelerator Pedal CHU, CXU, GU, LEU, MRU, TD, CMH, CMM

FSB 271-002, Accelerator Pedal

(December 2013)

On some Mack models built between January 1, 2013 and September 13, 2013, may experience multiple counts of inactive faults:
P113F-12, Buffered Idle Validation Switch Wire – VECU Side, Circuit short to Battery.
P113F-11, Buffered Idle Validation Switch Wire – VECU Side, Circuit short to Ground.
This is due to a bug in the software. If this issue is found follow the procedure below:

Parts

| Accelerator Pedal Replacement Parts | | |
|--------------------------------------|---------------|----------|
| Description | Existing Part | New Part |
| Accelerator Pedal (MACK Standard) | 82627960 | 82734051 |
| Accelerator Pedal (MACK Kickdown) | 82627981 | 82734047 |
| Jumper Harness | N/A | 22059325 |
| Conversion Kit | N/A | 85137025 |

Note: You will only have one or the other, a Standard Pedal or the Kickdown Pedal.

Note: Jumper harness will be required on all vehicles.

Note: If the truck is equipped with an mDRIVE transmission then conversion kit will be needed.

Repair Procedure

Note: Information is subject to change without notice.
Illustrations are used for reference only, and may differ slightly from the actual engine version. However, key components addressed in this information are represented as accurately as possible.

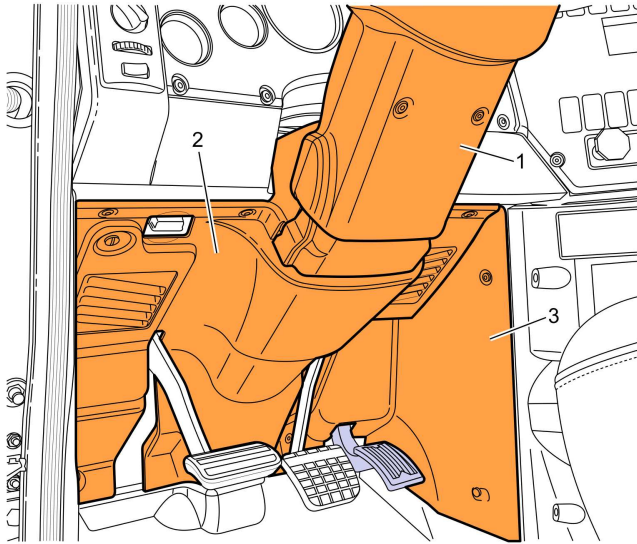
You must read and understand the precautions and guidelines in Service Information, group 30, "General Safety Practices, Electrical and Electronics" before performing this procedure. If you are not properly trained and certified in this procedure, ask your supervisor for training before you perform it.

- 1 Secure the vehicle for service by parking it on a flat level surface, applying the parking brake, chocking the rear wheel, and placing the transmission in neutral.
- 2 Disconnect all cables from the negative battery terminals to prevent personal injury from electrical shock and prevent damage to electrical components.

- 3 Remove the steering column cover (1) and remove the lower dash panels (2), (3).

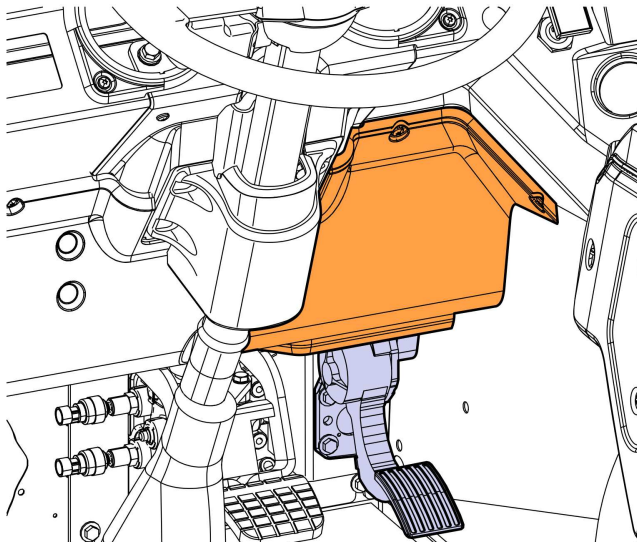
Note: See figure 1, for Mack Conventional truck lower dash panel removal.

Note: See figure 2, for MACK Cab Over truck lower dash panel removal.



W2083075

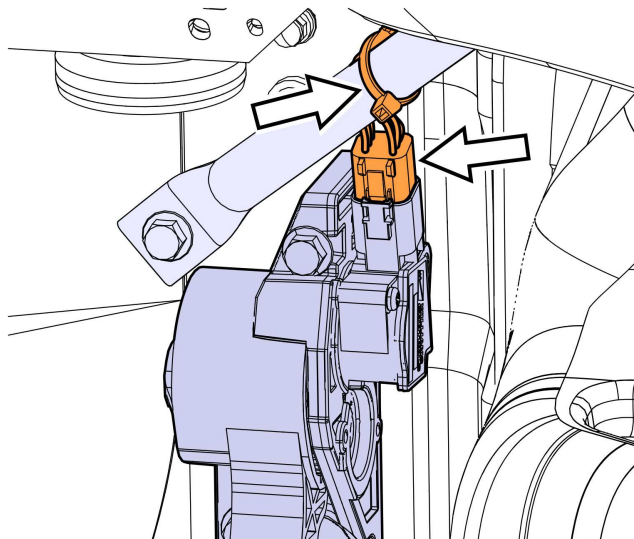
Figure 1



W2083076

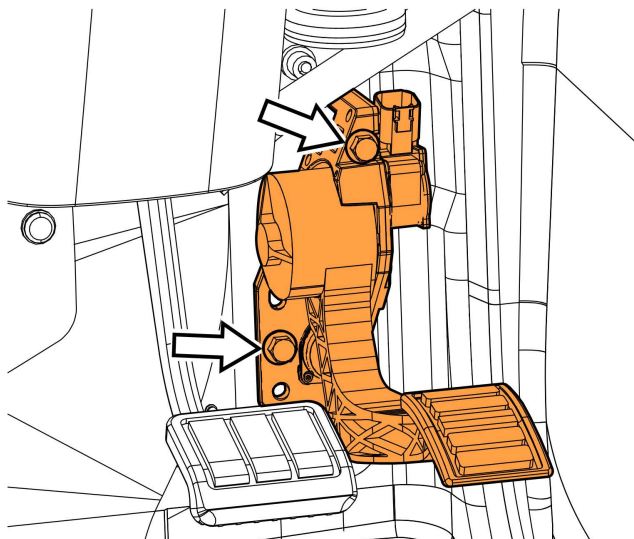
Figure 2

- 4 Disconnect the throttle position sensor harness.



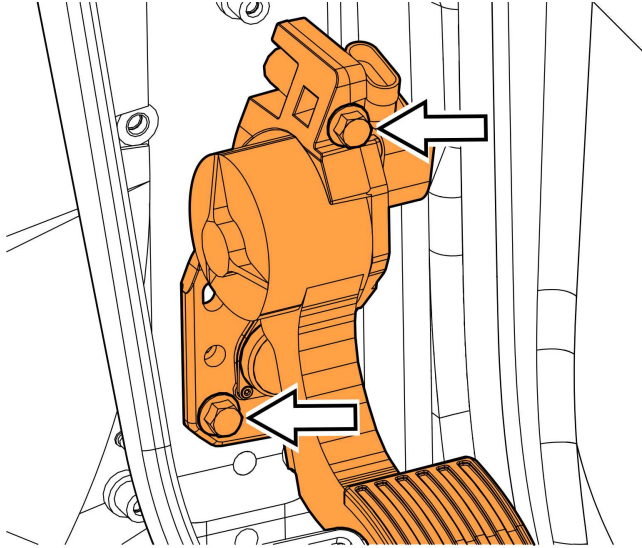
W2083012

- 5 Remove fasteners and remove accelerator pedal assembly.



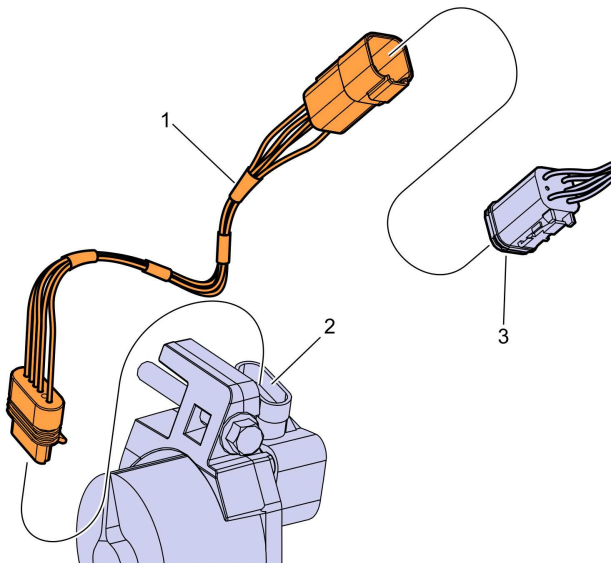
W2083013

- 6 Install replacement accelerator pedal and tighten fasteners to 24 ± 4 Nm (18 ± 3 ft-lb).



W2083079

- 7 Connect the jumper harness connector (1) to the throttle position sensor (2) and to the cab harness (3).



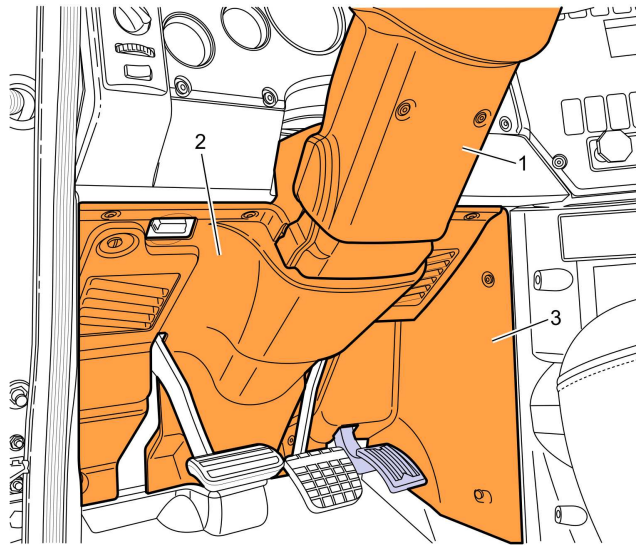
W2083015

- 8 Position lower dash panels (3) and (2), steering column cover (1), and hand tighten all trim panel fasteners.

Note: See figure 1, for Mack Conventional truck lower dash panel installation.

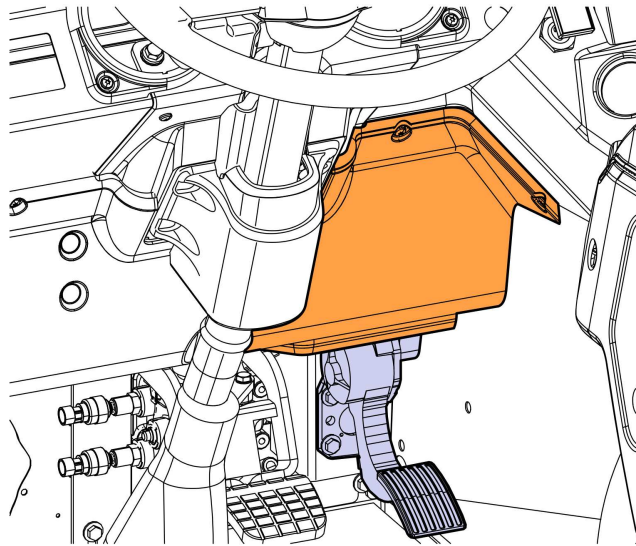
Note: See figure 2, for MACK Cab Over truck lower dash panel installation.

Note: Do not torque trim panel fasteners. Hand tighten only.



W2083075

Figure 1



W2083076

Figure 2

- 9 Reconnect all previously removed cable to the negative (ground) battery terminals.
- 10 **For mDRIVE only**, begin installation of conversion kit part number 85137025.
- 11 **For mDRIVE only**, reprogram the Vehicle Electronic Control Unit (VECU), (MID 144).
- 12 Clear all Diagnostic Trouble Codes (DTC's).
- 13 Verify proper operation.
- 14 Remove wheel chocks.

Reimbursement

| | |
|--|-------------------------|
| This repair may be eligible for reimbursement if a product failure was experienced within time and mileage limits of the applicable Warranty coverage. Reimbursement is obtained via the normal claim handling process. | |
| Claim Type (used only when uploading from the Dealer Bus. Sys.) | 01 |
| Labor Code | |
| Primary Labor Code (Without mDrive Transmission) | 2924A-01-80 0.3 hrs. |
| Primary Labor Code (With mDrive Transmission) | 2924B-01-80 0.7 hrs |
| Causal Part | 8267960 & 82627981 |

Mack Trucks, Inc. engages in a comprehensive program of testing and evaluating to provide the best possible product. Mack Trucks, Inc. however, is not committed to, or liable for updating existing vehicles.