

Loose Windshield Dam at Lower Right Corner of Windshield

Service Category Vehicle Interior

Section Interior Panels/Trim

Market USA

Toyota Supports
 ASE Certification 

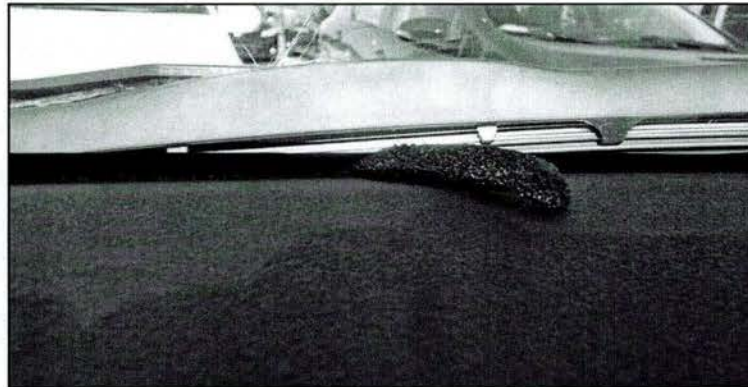
Applicability

YEAR(S)	MODEL(S)	ADDITIONAL INFORMATION
2012 – 2013	Prius C	

Introduction

Some 2012 – 2013 model year Prius C vehicles may exhibit a condition where a piece of foam that fits between the instrument panel and the windshield may come loose. Parts have been revised to address this condition.

Figure 1.



Production Change Information

This bulletin applies to vehicles produced **BEFORE** the Production Change Effective VIN shown below.

MODEL	PRODUCTION CHANGE EFFECTIVE VIN
Prius C	JTDKDTB3#D1036901

Loose Windshield Dam at Lower Right Corner of Windshield

Warranty Information

OP CODE	DESCRIPTION	TIME	OFF	T1	T2
BD1303	R & R Instrument Panel Cushion	1.5	55349-52180	62	13
	R & R Instrument Panel Cushion No. 5		55359-52190		

APPLICABLE WARRANTY

- This repair is covered under the Toyota Basic Warranty. This warranty is in effect for 36 months or 36,000 miles, whichever occurs first, from the vehicle's in-service date.
- Warranty application is limited to occurrence of the specified condition described in this bulletin.

Parts Information

PART NUMBER		PART NAME	QTY
PREVIOUS	NEW		
55349-52180	55349-52250	Cushion, Instrument Panel	1
55359-52190	55359-52150	Cushion, Instrument Panel, No. 5	1

Required Tools & Equipment

SPECIAL SERVICE TOOLS (SST)	PART NUMBER	QTY
Plastic Pry Tool Set*	<u>00002-06000-01</u>	1

* Essential SST.

NOTE

Additional SSTs may be ordered by calling 1-800-933-8335.

Repair Procedure

1. Remove the instrument panel.

Refer to the Technical Information System (TIS), applicable model and model year Repair Manual:

- 2012 / 2013 Prius C:
Vehicle Interior – Interior Panels/Trim – “Interior Panels/Trim: Upper Instrument Panel: Removal”

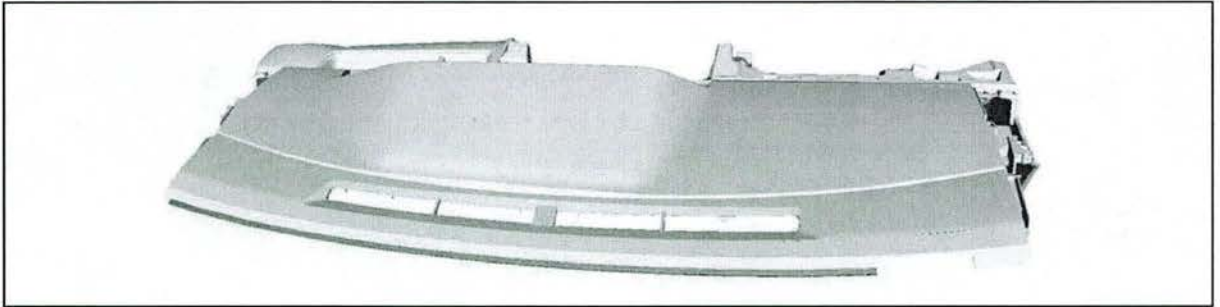
Loose Windshield Dam at Lower Right Corner of Windshield

Repair Procedure (Continued)

2. Remove the top Instrument Panel Cushion.

HINT
Remove excess glue that remains.

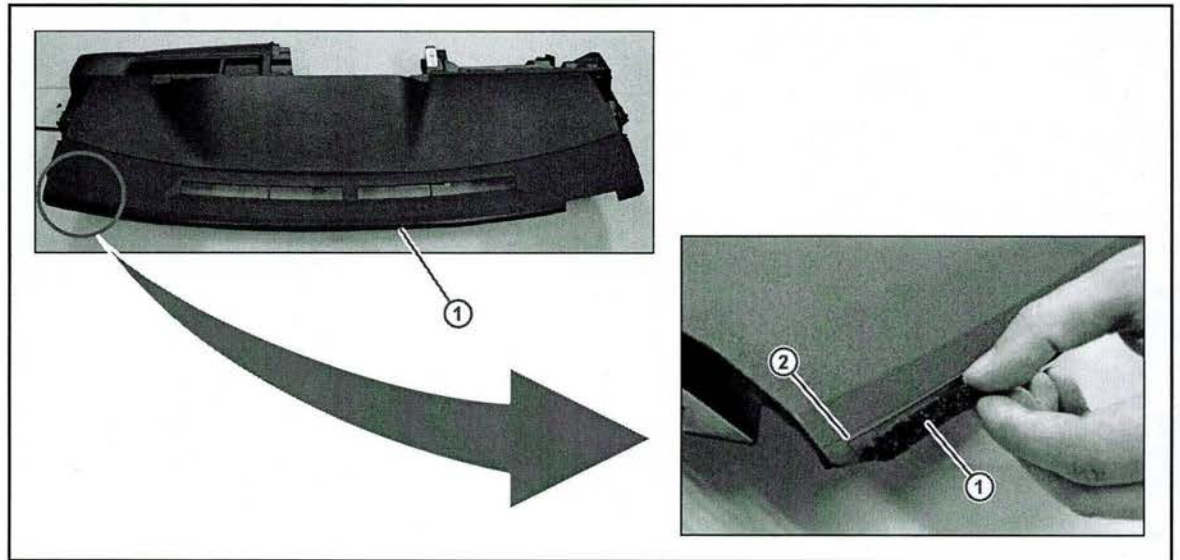
Figure 2.



3. Install the NEW Instrument Panel Cushion.

- A. Install the Instrument Panel Cushion along the front edge of the instrument panel starting at the installation mark shown below.

Figure 3.



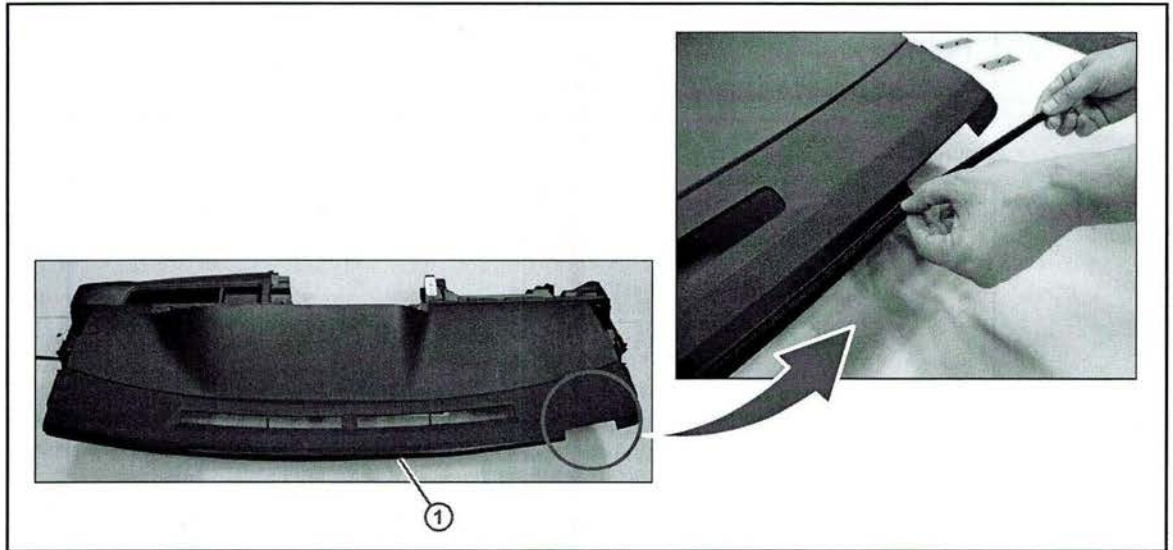
1	Instrument Panel Cushion
---	--------------------------

2	Installation Mark
---	-------------------

Loose Windshield Dam at Lower Right Corner of Windshield

Repair Procedure (Continued)

Figure 4.



1	Instrument Panel Cushion
---	--------------------------

HINT
Some overhang will be present.

Figure 5.



Loose Windshield Dam at Lower Right Corner of Windshield

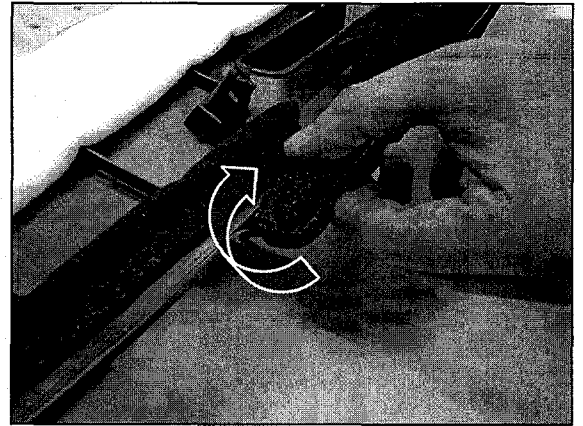
Repair Procedure (Continued)

- B. Carefully turn the instrument panel so that the bottom is accessible.

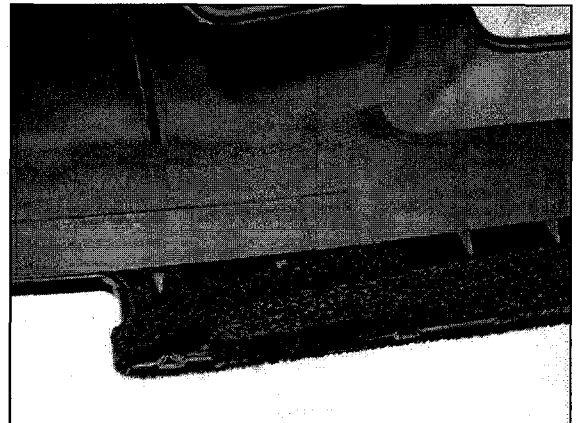
NOTICE

Use caution to protect the instrument panel from damage.

- (1) Wrap overhang onto bottom of instrument panel. Figure 6.



- (2) Ensure that foam is installed as shown. Figure 7.

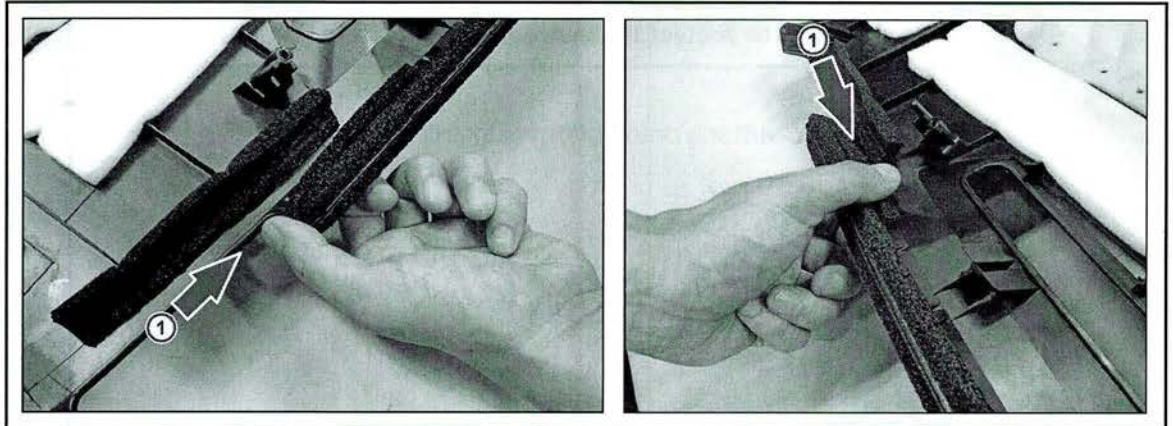


Loose Windshield Dam at Lower Right Corner of Windshield

Repair Procedure (Continued)

C. Secure Instrument Panel Cushion with pressure at the indicated points.

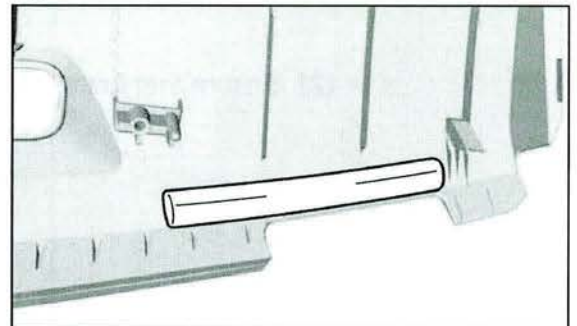
Figure 8.



1	Leading Edge of Instrument Panel Cushion
---	--

4. Remove the Instrument Panel Cushion No. 5.

Figure 9.

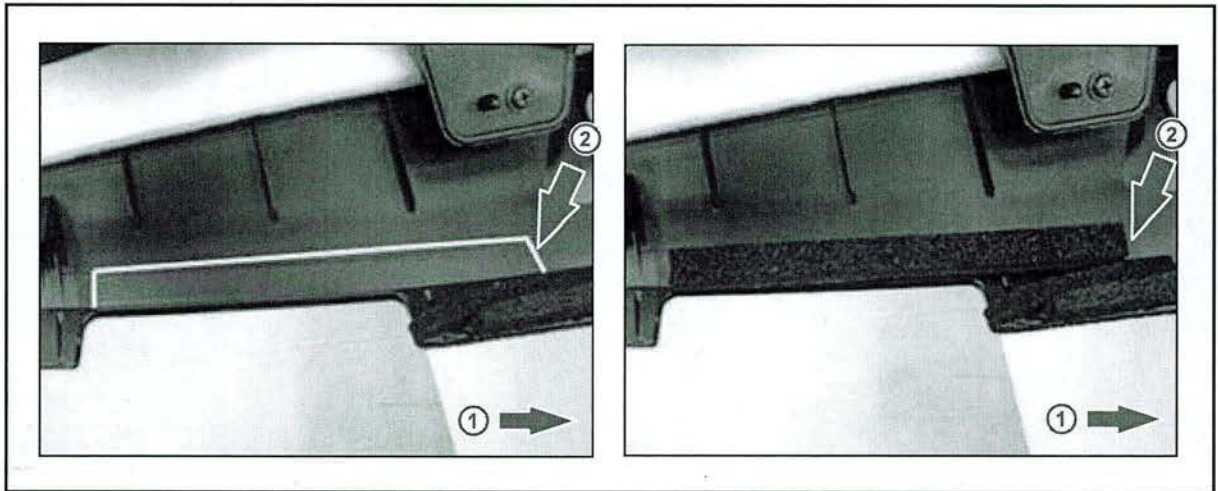


Loose Windshield Dam at Lower Right Corner of Windshield

Repair Procedure (Continued)

5. Install the NEW Instrument Panel Cushion No. 5 at the furthestmost inner installation position as shown.

Figure 10.



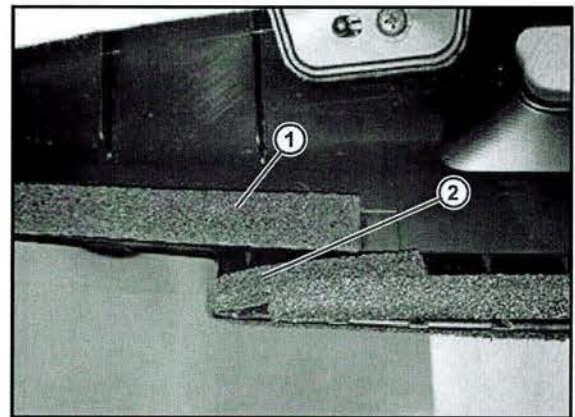
1	Center of Instrument Panel
---	----------------------------

2	Furthestmost Inner Installation Position
---	--

NOTE
 Improper position will interfere with instrument panel installation. Be sure to use furthestmost inner installation position as shown in Figure 10.

6. Confirm final assembly is as shown.

Figure 11.



1	Instrument Panel Cushion No. 5
2	Instrument Panel Cushion

Loose Windshield Dam at Lower Right Corner of Windshield

Repair Procedure (Continued)

7. Reinstall the upper instrument panel.

Refer to TIS, applicable model and model year Repair Manual:

- 2012 / 2013 Prius C:
Vehicle Interior – Interior Panels/Trim – “Interior Panels/Trim: Upper Instrument Panel: Installation”

NOTE

Confirm that the instrument panel cushion does NOT obstruct the Vehicle Identification Number.