



File in Section: -

Bulletin No.: PI1102

Date: November, 2013

Service Bulletin

PRELIMINARY INFORMATION

Subject: Rear Bumper Fascia Paint Lifting, Chipping or Bubbling at Lower Edge of Center High Mounted Stop Lamp (CHMSL)

Models: 2014 Corvette
Condition/Concern



3644033

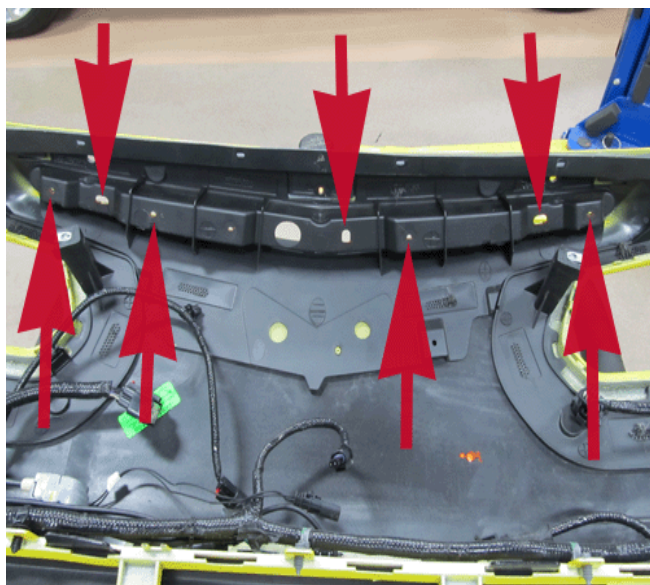
Some customers may comment the rear bumper fascia paint is peeling, lifting, bubbling or chipping on the area under center high mounted stop lamp (CHMSL).

This condition may be caused by the center high mounted stop lamp being positioned too far forward in the fascia. This allows the lower edge of the lamp assembly to contact the edge of the lamp opening in the fascia. This condition occurs when the vehicle is being driven at speed. The fit of the lamp to the fascia appears correct when the vehicle is not moving.

Recommendation/Instructions

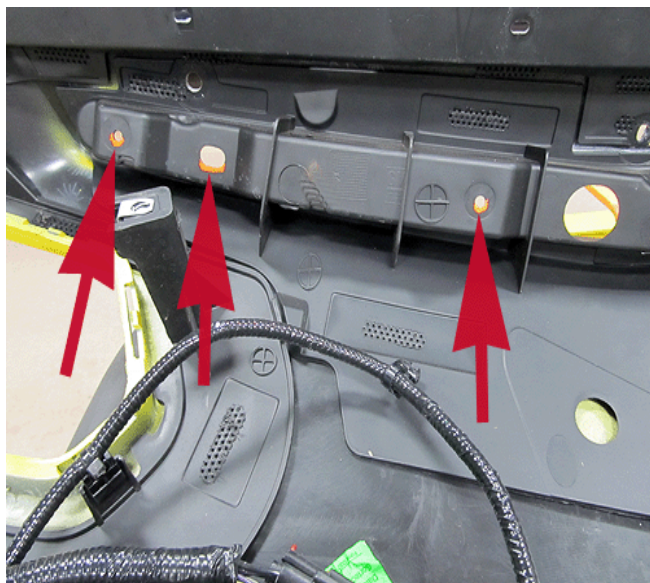
Use the following steps to revise the CHMSL mounting bracket.

1. Remove the CHMSL. Refer to High Mount Stop Lamp Replacement in SI.



3644034

2. Locate the four CHMSL mounting screw holes and the three locating pin slots.



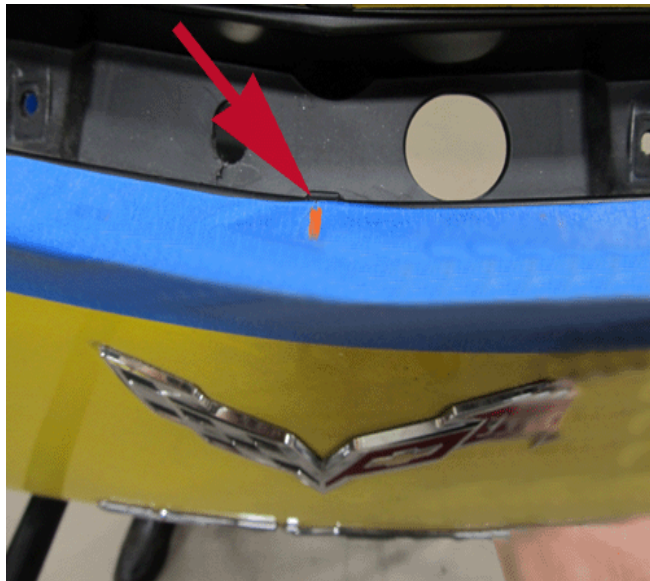
3644037

3. Using a bright colored paint pen, mark a 3 mm area on the rear edge of the holes as shown.



3644038

4. Using an appropriate size file or die grinder, remove 3 mm of material from the holes as shown.
5. Using a utility knife or file, remove any loose material left around the revised mounting holes.
6. Turn the fascia assembly over and apply masking tape to protect the painted surface of the fascia while performing the next steps.



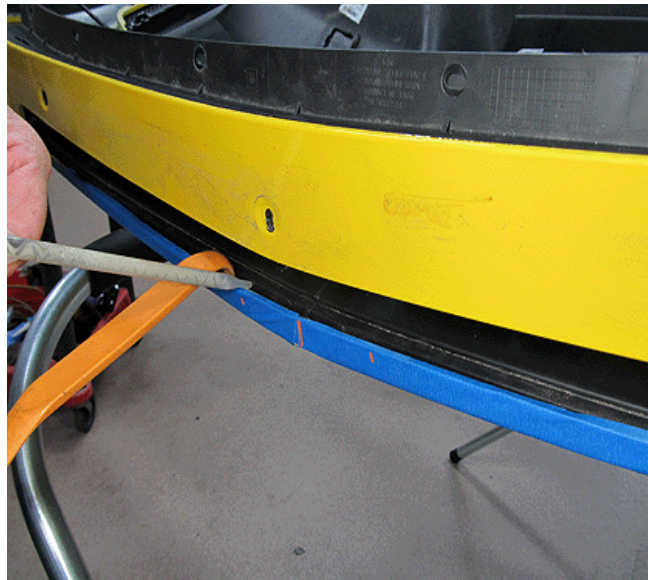
3644040

7. Locate the center of the CHMSL opening. Mark this location on the masking tape with a paint pen.



3644041

8. Measure 50 mm on both sides of the center point and mark with a paint pen creating a 100 mm application area.



3644043

9. Using a trim stick, separate the fascia from the bracket creating a gap for adhesive application. Leave the trim stick in place.
10. Clean the area of any contamination and clean the mating surfaces as instructed by the adhesive manufacturer.
11. Prepare an application of structural adhesive (see list below).



3644064

12. Apply a 10 mm bead of adhesive between the lamp bracket and the inner fascia as show.



3644068

Ensure this bead covers the 100 mm application area.



3644071

13. Clamp the lamp bracket the fascia as shown and allow the adhesive to cure per the manufacturers instructions.

Note: Test fit the CHMSL to ensure the repositioned lamp covers the damaged paint edge on the fascia. If the paint damage is not covered by the lamp, repair the paint as required.

14. Reinstall the Center High Mounted Stop Lamp (CHMSL). Refer to High Mount Stop Lamp Replacement in SI. Ensure it is positioned as far rearward as possible.

*We believe these sources and their products to be reliable. There may be additional manufacturers of such material. General Motors does not endorse, indicate any preference for or assume any responsibility for the products from these firms or for any such items which may be available from other sources.

Parts Information

*The following product is available from Kent Automotive. Contact them at 1-888-YES-KENT (888-937-5368) or at www.kent-automotive.com.

Additional listed adhesive products can be purchased from local suppliers.

Part Number	Description	Quantity
P10641*	Chem-Weld I Plastic Repair (Pack of 1)	1 Kit
34240	3M™ Semi-Rigid Plastic Repair 50 mL.	1 Kit
Fusor 143	LORD Fusor® Bumper Repair Adhesive 50 mL.	1 Kit
SEM 40502	SEM Quick Set 50 Adhesive 1.7oz. Cartridge	1 Kit

Warranty Information

For vehicles repaired under warranty, use:

Labor Operation	Description	Labor Time
2080098*	Revise CHMSL Mounting Bracket	1.8 hrs
*This is a unique labor operation for bulletin use only. It will not be published in the Labor Time Guide.		