



Service Bulletin

File in Section: -

Bulletin No.: PI1099

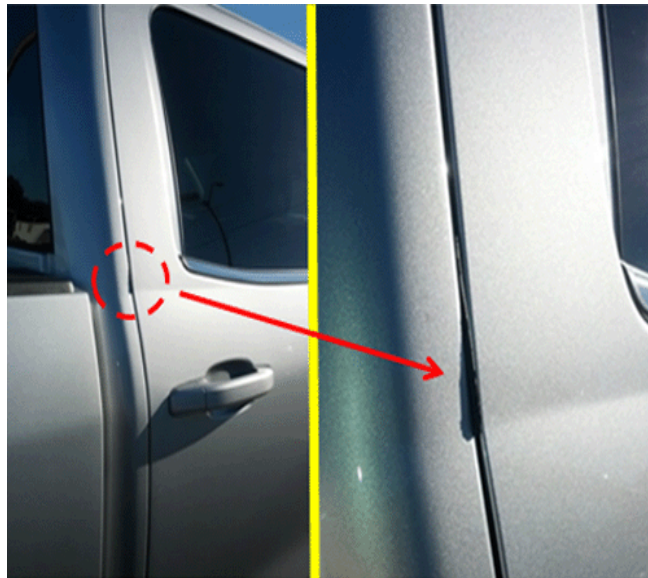
Date: November, 2013

PRELIMINARY INFORMATION

Subject: Rear Door Weatherstrip Protrudes from Door Opening at Rear Beltline

Models: 2014 Chevrolet Silverado 1500 (Crew Cab only)
2014 GMC Sierra 1500 (Crew Cab only)

Condition/Concern



3646024

Some customers may comment on the driver or passenger side rear door weatherstrip protruding from the door opening at the rear beltline.

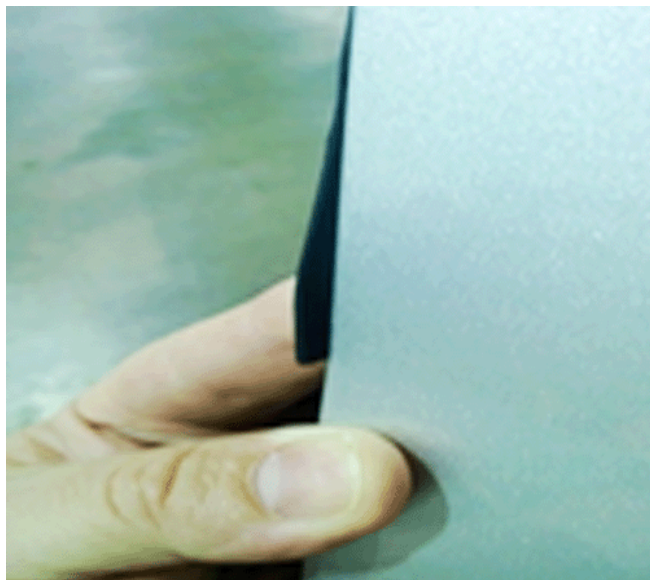
The cause of this condition may be the combination of the variance in excess weatherstrip seal mold in the forming process and/or individual rear door positioning.

Recommendation/Instructions

Important: Do not replace the rear door weatherstrip for this condition.

Trim the "flag" portion of the weatherstrip seal to match the contour of the rear door, following the repair steps below:

1. Open the rear door.



3646029

2. Press the protruding portion of the seal against the edge of the door.



3646030

3. Following the edge of the door, use a white pen or marker to trace a line onto the outside of the weatherstrip.



3646031

4. Using a pair of snips or sharp scissors, cut along the marked line and discard the removed piece.



3646032

Note: The edge of the weatherstrip should now be flush with the edge of door when held against it.

5. Hold the seal against the door again and check to make sure no material sticks out beyond the edge of the door.



3646033

6. Close the door and re-check to make sure the weatherstrip no longer protrudes past the door edge. If it does, repeat this procedure.

Warranty Information

For vehicles repaired under warranty, use:

Labor Operation	Description	Labor Time
1480148*	Trim Rear Door Weatherstrip Seal	0.2 hr

*This is a unique labor operation for bulletin use only. It will not be published in the Labor Time Guide.