



# Service Bulletin

File in Section: -

Bulletin No.: PI1097

Date: November, 2013

## PRELIMINARY INFORMATION

**Subject:** Intermittent Service Power Steering Message on Vehicle Start Up

**Models:** 2013-2014 Cadillac ATS  
**Condition/Concern**

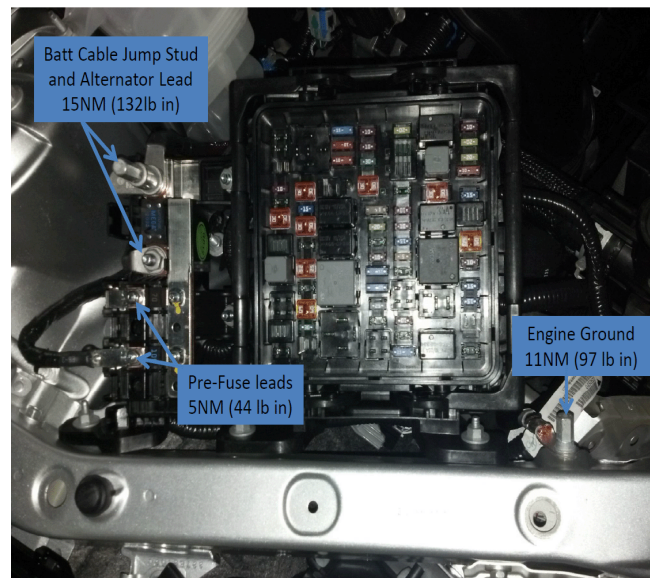
Some customers may comment that upon starting the engine, the DIC displayed a Service Power Steering message. This condition may be intermittent and difficult to duplicate.

### Recommendation/Instructions

Check for Diagnostic Trouble Codes (DTCs). If DTCs are present, follow established diagnostic procedures and check for related service bulletins.

If no DTCs are present, the issue may be caused by a momentary loss of power or ground in the power steering gear circuits.

If no DTCs are present or stored, use the following steps to correct the condition:

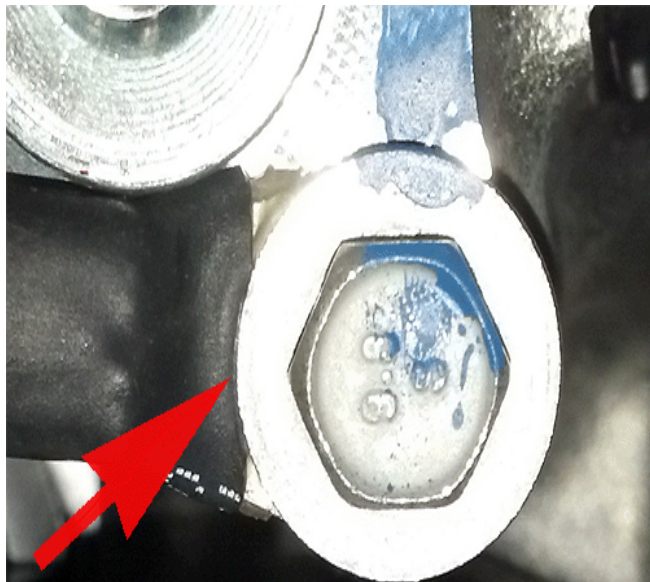


3648055

1. Inspect the underhood fuse block power and ground connections for proper torque as identified in the above photo.

**Note:** On the 4 cylinder (LCV, LTG) automatic transmission-equipped vehicles, the engine ground was located at the front of the engine from start of production thru mid-December 2012. After this date it is located at the rear of the engine. Manual transmission-equipped vehicles have the ground location at the front of the engine. This location did not change. The 3.6L V6 (LFX) ground is at the front of the engine.

2. Inspect engine ground #G104, verify the torque and ensure the connection is clean and sound.



3575838

Look for either excess shrink wrap or glue under the eyelet. Inspect for adhesive that has seeped out onto the eyelet during the heating of the shrink tube, or the shrink tube itself extending into the eyelet area.

**Important:** It is not an adequate check to simply try to wiggle the ground wire to check for looseness. The ground must be removed and checked for these items, cleaned and reinstalled.

3. Carefully trim the heat shrink tube if needed, clean adhesive from the eyelet (sand off), reinstall and torque.

## Warranty Information

For vehicles repaired under warranty, use:

Labor Operation	Description	Labor Time
5430962	Ground Connection Repair	Use Published Labor Operation Time