



# Service Bulletin

File in Section: -

Bulletin No.: PI1070

Date: October, 2013

## PRELIMINARY INFORMATION

**Subject:** Front Seat Lateral or Vertical Movement and/or Click Type Noise

**Models:** 2013-2014 Cadillac ATS

### Condition/Concern

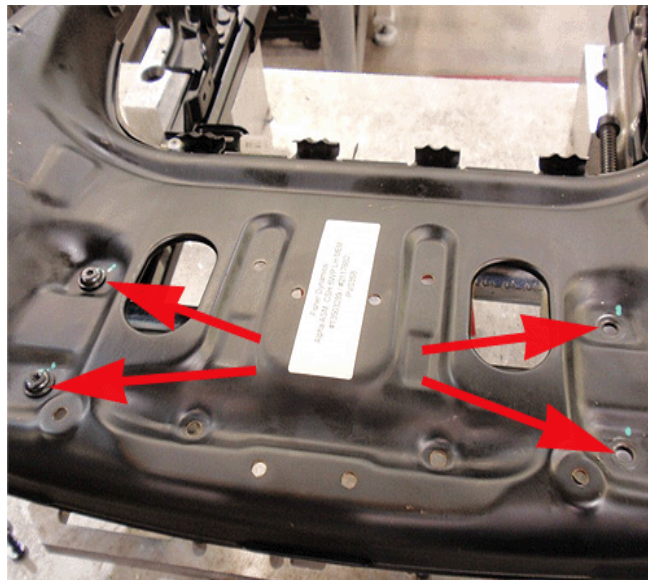
Some customers may comment that the drivers and/or passengers seat lower cushion exhibits excessive lateral or vertical seat movement combined with a clunk type feeling or generates a click type noise. This condition occurs when the seat is occupied and the vehicle is being driven on roads with multiple curves.

This condition may be caused by movement between the seat pan front pivot points and the seat frame or the seat spring rear mounting hooks where they attach to the seat frame. The plastic attachment points may "stick" then "slip" creating the condition. There may also be excessive clearance between the power seat vertical adjuster actuator and the attachment point on the seat frame.

### Recommendation/Instructions

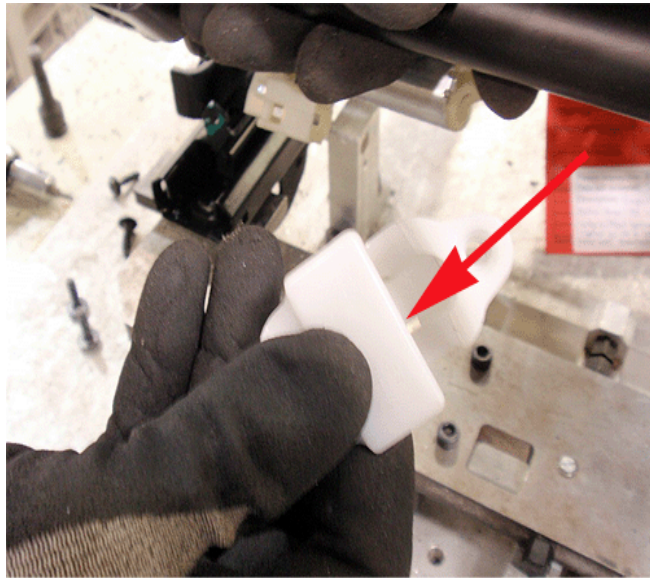
Use the following steps to lubricate the front seat pan pivot points, lubricate the seat cushion support mounting hooks and install a shim clip between the power seat vertical adjuster actuator and the seat frame:

1. Remove the lower seat cushion pad on the affected seat. Refer to Driver or Passenger Seat Cushion Pad Replacement in SI.
2. Place the seat assembly on a suitable work area. Use care to place the seat on a soft clean surface to prevent damage to the seat upholstery.



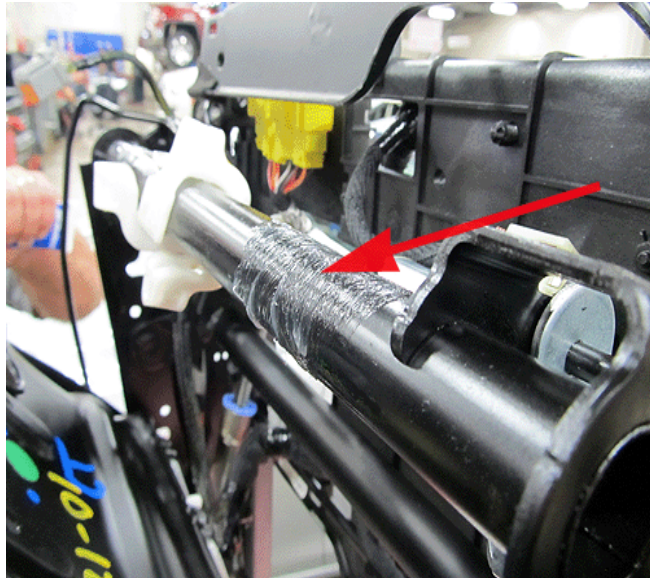
3. Remove the four screws that attach to two pivots to the seat pan.

3619958



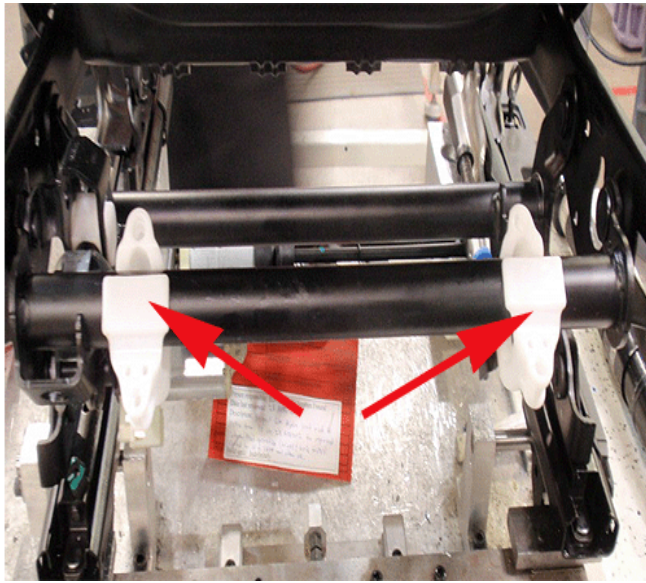
3619959

4. Remove the two seat pan pivots from the seat.



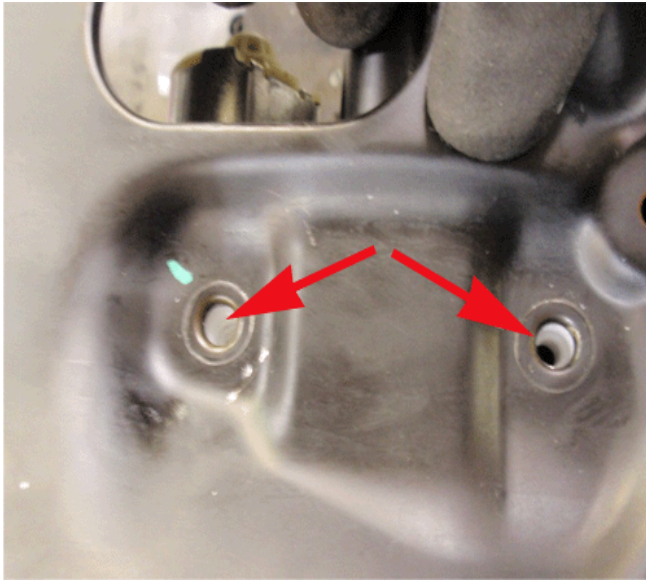
3619960

5. Using a small brush, apply GM Super Lube GM #12371287 as shown. Ensure the complete contact surface is coated.



3619962

6. Reinstall the pivots onto the cross bar.



3619963

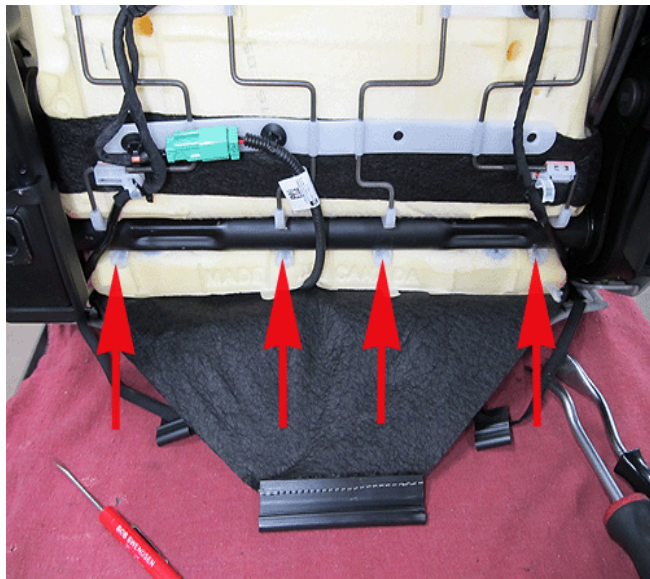
7. Align the holes in the seat pan with the holes in the pivots.





3619964

8. Hand start the four screws.
9. Tighten the four screws.
10. Wipe off any excess lubricant.



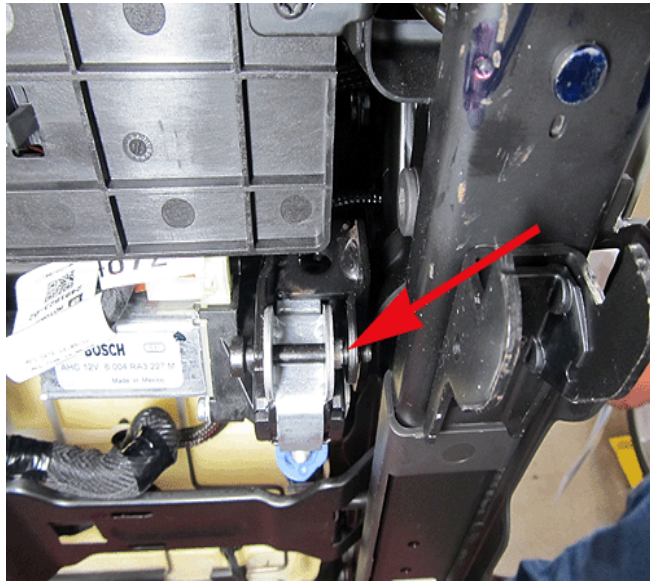
3619965

11. Locate the four rear seat cushion support hooks. Unhook the hooks from the seat frame.



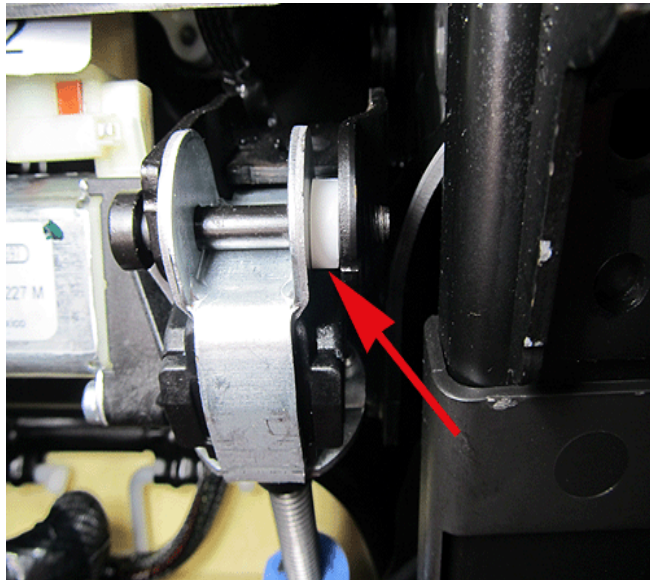
3619966

12. Coat the inside of all four hooks with GM Super Lube GM # 12371287 as shown. Ensure the complete contact surface is coated.
13. Reinstall the four hooks onto the seat frame.



3619967

14. Locate the power seat vertical adjuster actuator attachment to the seat frame.



3619968

15. Install the shim clip as shown.  
It may be necessary to slightly spread the bracket on the seat frame with a large screwdriver to allow clearance for the clip.
16. Reinstall the lower seat cushion pad on the affected seat. Refer to Driver or Passenger Seat Cushion Pad Replacement in SI.

## Parts Information

The shim clip used in the procedure is only available from the Warranty Parts Center (WPC). Please use the form at the end of this bulletin to order the part.

Part Number	Description	Quantity
WPC722	Shim Clip	One Per Seat
12371287 (In Canada, 10953437)	GM Super Lube 3 oz. Tube	As Required

## Warranty Information

For vehicles repaired under warranty, use:

Labor Operation	Description	Labor Time
7080038*	Install Seat Actuator Shim Clip, Lubricate Seat Pivot Points And Attachment Hooks	1.4 hrs

\*This is a unique labor operation for bulletin use only. It will not be published in the Labor Time Guide.

**IMPORTANT NOTE WHEN PRINTING THIS FORM:** If the form prints out on two pages, make certain you fax BOTH pages so that the WPC receives all the needed information. Missing information will delay or prevent the part from being shipped.

Parts Request Form – Warranty Parts Center
<p><b>Use this form ONLY for U.S., Canadian and Mexico Dealers. Export markets located outside of North America must contact their regional Technical Assistance Center for assistance.</b></p> <p>To: Warranty Parts Center</p> <p>e-mail: <a href="mailto:warrantypartscenterUSA@gm.com">warrantypartscenterUSA@gm.com</a></p> <p>or WPC Fax: 248-371-0192</p> <p>Attn: Amina Winfrey</p>

(cont'd)

**Parts Request Form – Warranty Parts Center**

Part Being Requested: WPC 722 Shim Clip

Dealer BAC (U.S.) /Dealer Code (Canada)/Dealer Number (Mexico):

Dealer Name:

Dealer Address:

Dealer Contact Person:

Dealer Phone Number:

Repair Order Number:

Vehicle VIN:

**Important:** If you do not receive the part within 2 business days after e-mailing or faxing your part request to the Warranty Parts Center, please call WPC Customer Assistance at 248-371-9901/9902.