



Service Bulletin

File in Section: -

Bulletin No.: PI0903

Date: February, 2013

PRELIMINARY INFORMATION

Subject: Exhaust Leak and/or Service Vehicle Soon (SVS) On and DTC P0171 Set

Models: 2013 Chevrolet Cruze, Sonic
2013 Chevrolet Trax (Canada Only)
Equipped with 1.4L Engine (RPO LUV)

Condition/Concern

Some customers may comment on a exhaust leak type noise and/or the service vehicle soon (SVS) light on. A DTC P0171 may be stored in history.

This condition may be caused by excessive amount of glue used by the supplier to retain the gasket before mounting the converter to the manifold. Hardened glue may have filled the sealing gap, which restricts the V-band clamp to draw both flanges together completely.

Recommendation/Instructions

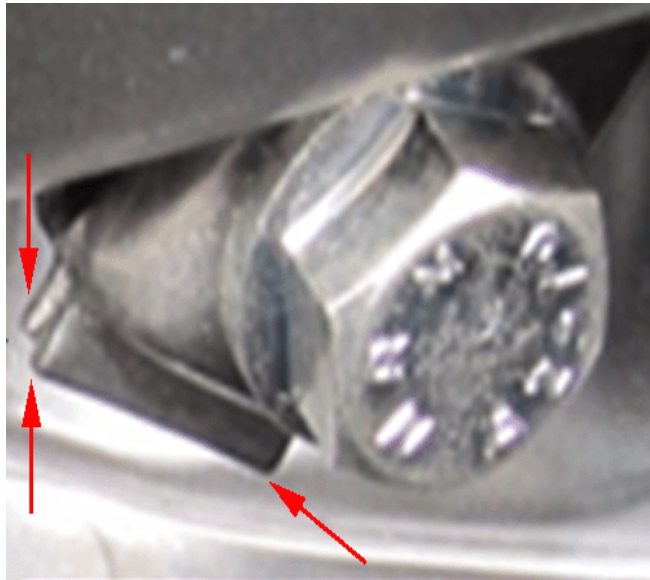
Inspect the exhaust V-band clamp to ensure that the ends are completely closed with no gap. If the ends of the V-band clamp show to have a gap present, follow the procedure below. If the ends of the V-band clamp have no gap between them, follow further diagnosis in SI.

1. Raise and support the vehicle. Refer to Lifting and Jacking the Vehicle in SI.

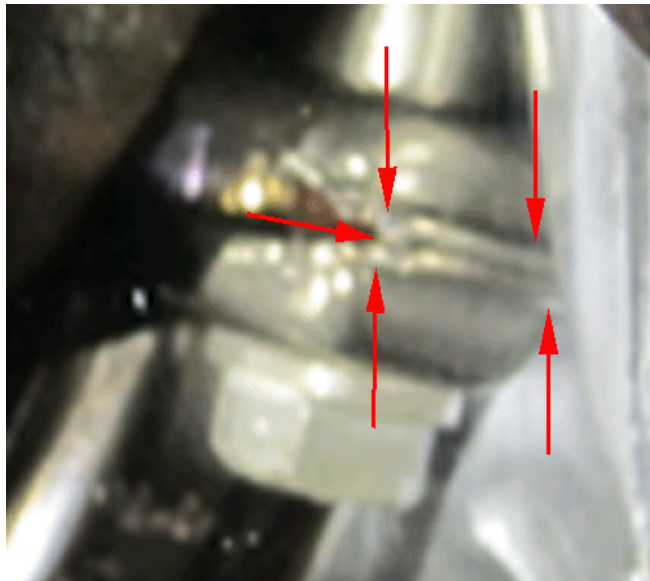


Note: The illustration above shows the ends of the V-band clamp with the gap.

3271117



3272803



3272387

Note: The illustrations above show the ends of the V-band clamp with both flanges together completely.

Important: While performing this procedure, **DO NOT** loosen the two fasteners that restrain the converter onto the engine. This would risk damage to the gasket due to separation of the flanges and repositioning.

2. Unscrew the fastener on the V-band clamp a total of several rotations.
3. Using a screwdriver, pry the clamp apart and make sure that both halves of the clamp are loose and not stuck to either flange.
4. Tighten the bolt.

Tighten

Tighten the bolt to 13 N•m (115 lb in).

Warranty Information

For vehicles repaired under warranty, use:

Labor Operation	Description	Labor Time
J7582*	Tighten V-Band Clamp Bolt	0.2 hr
*This is a unique labor operation for bulletin use only. It will not be published in the Labor Time Guide.		