

# Technical Bulletin

Model(s)	Year(s)	Eng. Code(s)	Trans. Code(s)	VIN Range From	VIN Range To
Beetle	2012-2013	All	All	AT_CM000001	AT_DM678028
Beetle Convertible	2013	All	All	AT_DM000001	AT_DM823648

## Condition

63 13 01 April 26, 2013 2033699

### Paint Chafe between Rear Bumper Cover and Fender

Customer may identify a paint chafe between rear bumper cover and fender (quarter panel, figure 1).

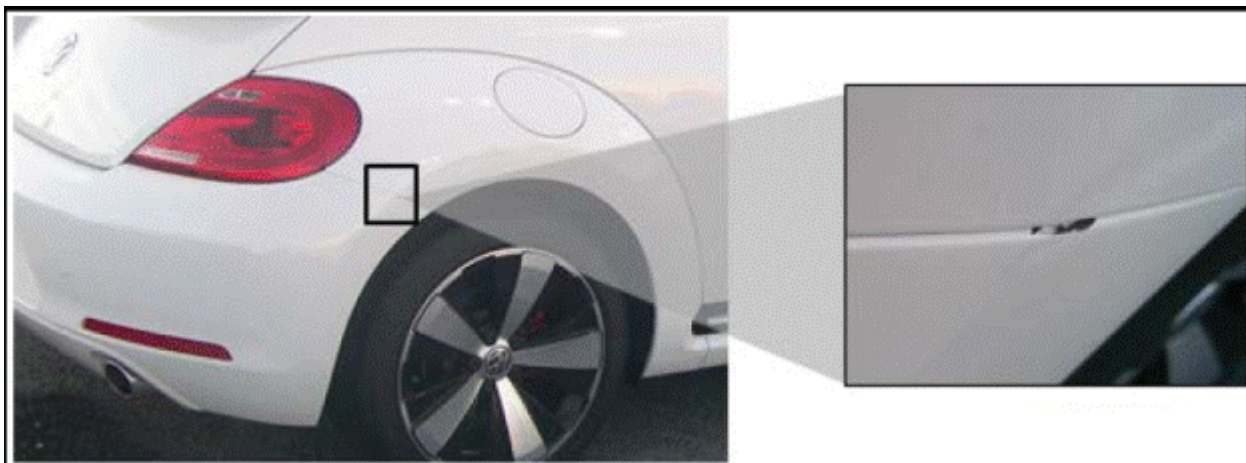


Figure 1

## Technical Background

Contact friction between rear bumper cover and fender due to improper fit.

## Production Solution

Dimensional change to the rear bumper cover and addition of expanding rivet address the concern in production as of the following VIN's:

Beetle Sedan - 3VWJL7AT5DM678028

Beetle Convertible - 3VW5L7AT3DM823648

# Technical Bulletin

---

## Service

### Procedure

- Remove rear tail lamps. See Repair Manual group 94 in Elsa.
- Remove rear bumper cover. See Repair Manual group 63 in Elsa.
- Repair paint chafe area.



Slight changes may have to be made to removal and installation procedures of rear bumper cover, depending upon equipment installed in vehicle

- Install bumper cover. See Repair Manual group 63 in Elsa.



Using gap gauge set 3371, adjust the fit between bumper cover and fenders to .08mm +/- .02mm. (Figure 2).

Figure 2



When installing bumper cover pay special attention to the bumper cover fit and gaps to prevent reoccurrence. See Body Collision Repair Manual group 00 General, Technical data, Body Gap Dimensions, Body Rear in Elsa.

# Technical Bulletin

## Warranty



**Note:**

**Paint damage from misaligned panels is not a paint defect. Claim types 950 and 150 do not apply to this repair.**

To determine if this procedure is covered under Warranty, always refer to the Warranty Policies and Procedures Manual <sup>1)</sup>					
Model(s)	Year(s)	Eng. Code(s)	Trans. Code(s)	VIN Range From	VIN Range To
Beetle	2012-2013	All	All	AT_CM000001	AT_DM678028
Beetle Convertible	2013	All	All	AT_DM000001	AT_DM823648
<b>SAGA Coding</b>					
Claim Type:	Use applicable Claim Type <sup>1)</sup>				
Service Number:	Damage Code	HST	Damage Location (Depends on Service No.)		
6369	0030	--	Use applicable when indicated in ElsaWeb (L/R)		
	Beetle, Beetle Convertible			3ME <sup>2)</sup>	
Labor Operation <sup>3)</sup> : Remove and Install Taillight			94312000 = 20 TU		
Labor Operation <sup>3)</sup> : Remove and Install Rear Bumper Cover			63691950 = 40 TU		
Labor Operation <sup>3)</sup> : Modify Rear Bumper Cover			63690599 = 20 TU		
Causal Part: Select Labor Operation			63690599		
Labor Operation <sup>3)</sup> : Body Damage Note: In case of body damage, repairs are not to exceed ElsaWeb SRT			Refer to Volkswagen Warranty Paint and Corrosion Claim Coding Manual		
If the repairs are sublet, please use the following part number in "Outside Materials"			<ul style="list-style-type: none"> <li>LACKMATF: Paint and Materials</li> </ul>		



# Technical Bulletin

<p>If the repairs are sublet, please use the following part number in "Outside Labor"</p>	<ul style="list-style-type: none"> <li>• L0010000: External Painting-straight color</li> <li>• L0020000: External Painting-metallic/2-layer</li> <li>• L0030000: External Painting-pearl color</li> <li>• A0041000: Body Shop repair no paint</li> </ul>	
<p><b>Diagnostic Time <sup>4)</sup></b></p>		
<p><b>GFF Time expenditure</b></p>	<p>01500000 = 00 TU max.</p>	<p><b>NO</b></p>
<p><b>Road Test</b></p>	<p>01210002 01210004</p>	<p><b>NO</b></p>
<p><b>Technical Diagnosis</b></p>	<p>01320000 = 00 TU max.</p>	<p><b>NO</b></p>
<p><b>Claim Comment: Input "As per Technical Bulletin 2033699" in comment section of Warranty Claim.</b></p>		
<p><sup>1)</sup> Vehicle may be outside any Warranty in which case this Technical Bulletin is informational only</p> <p><sup>2)</sup> Code per warranty vendor code policy.</p> <p><sup>3)</sup> Labor Time Units (TUs) are subject to change with ELSA updates.</p> <p><sup>4)</sup> Documentation required per Warranty Policies and Procedures Manual.</p>		

## Required Parts and Tools

No special parts required.

Tool Description	Tool No:
Adjustment gauge	3371

## Additional Information

**All part and service references provided in this Technical Bulletin are subject to change and/or removal. Always check with your Parts Dept. and Repair Manuals for the latest information.**