

TECHNICAL BULLETIN
Q277NAS2
09 DEC 2013



© Jaguar Land Rover North America, LLC

NOTE: The information in Technical Bulletins is intended for use by trained, professional Technicians with the knowledge, tools, and equipment required to do the job properly and safely. It informs these Technicians of conditions that may occur on some vehicles, or provides information that could assist in proper vehicle service. The procedures should not be performed by 'do-it-yourselfers'. If you are not a Retailer, do not assume that a condition described affects your vehicle. Contact an authorized Land Rover service facility to determine whether this bulletin applies to a specific vehicle.

Changes are highlighted in gray

SECTION: 501-25B

Service Action: D-Post Water Ingress

AFFECTED VEHICLE RANGE:

Range Rover (LG)

Model Year: 2013

VIN: DA100499-DA105964

MARKETS:

NAS

CONDITION SUMMARY:

Situation: Vehicles within the listed VIN range may have an issue where the 'Charge Warning Light' is displayed in the Instrument Cluster (IC) due to water ingress from the right-hand D-post area.



NOTE: This program has been closed with immediate effect.

Action: Retailers are required to **HOLD** all affected vehicles in the above VIN range that are in their control and refrain from releasing the vehicles for new or used vehicle sale pending completion of the rework action detailed in this Technical Bulletin. Unsold vehicles should have this performed as part of the Pre-Delivery Inspection (PDI) process. Affected vehicles already in the hands of customers should be updated at the next available opportunity.

PARTS:

DESCRIPTION	PART No.	QTY.	*EXPECTED % of VEHICLES REQUIRING PARTS
Sealant kit	LR040765	1	100



NOTE: * when ordering parts, order the expected percentage demand of parts identified only

SPECIAL TOOLS:

Refer to Workshop Manual / Repair Procedure for any required special tools

WARRANTY:

Warranty claims must be submitted quoting Program Code '**Q277**' together with the relevant Option Code from the table. The SRO and part information listed have been included for information only. The Option Code(s) that allows for the drive in / drive out allowance can only be claimed if the vehicle is brought back into the workshop for this

action alone to be undertaken.

This program has been closed with immediate effect. Warranty claims must be submitted for payment within 30 calendar days of completion of the repair.

PROGRAM CODE	OPTION CODE	DESCRIPTION	SRO	TIME (HOURS)	PARTS	QTY. / VALUE
Q277	B	Remove rear D-post finisher, re-seal and replace	76.43.89.41	0.30	LR040765	1
Q277	C	Remove rear D-post finisher, re-seal and replace Drive in/drive out	76.43.89.41 02.02.02	0.30 0.20	LR040765 -	1 -



NOTE: Normal Warranty policies and procedure apply

SERVICE INSTRUCTION:

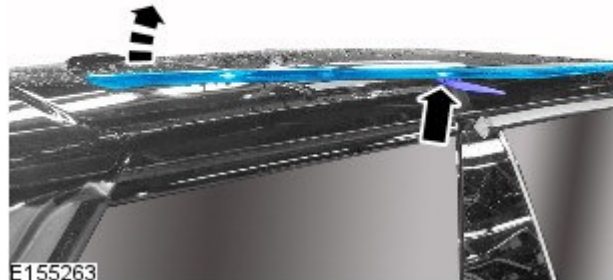
1. Remove the right-hand Rear Quarter Panel Moulding (see TOPIx Workshop Manual section 501-08).



2. **CAUTION: Take care to avoid damage to the spoiler/tailgate.**

Partially remove the right-hand Roof Moulding (see TOPIx Workshop Manual section 501-08 Roof Moulding).

- Use a plastic trim tool (or similar tool) to support the Roof Moulding.



3. **NOTE: The area must be clean and dry prior to applying the sealant.**

Apply sealant to the roof bolts and smooth off with a wetted finger.



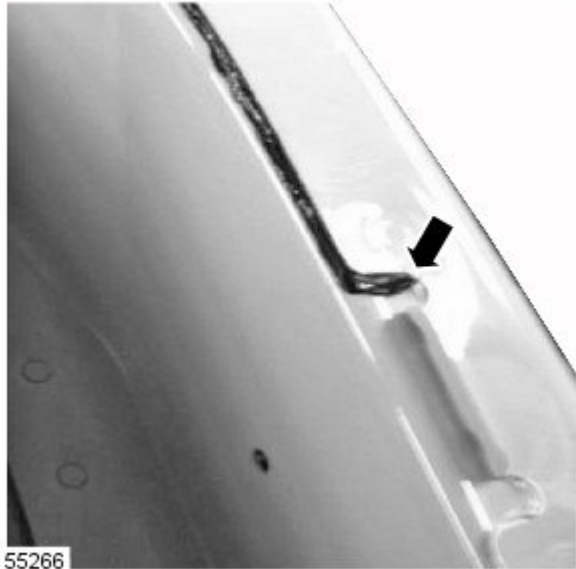
4.  **NOTE: The area must be clean and dry prior to applying the sealant.**

Apply sealant into the J-Seal area.



5.  **NOTE: The area must be clean and dry prior to applying the sealant.**

Seal the gap along the D-Post including the semi-circle notch.

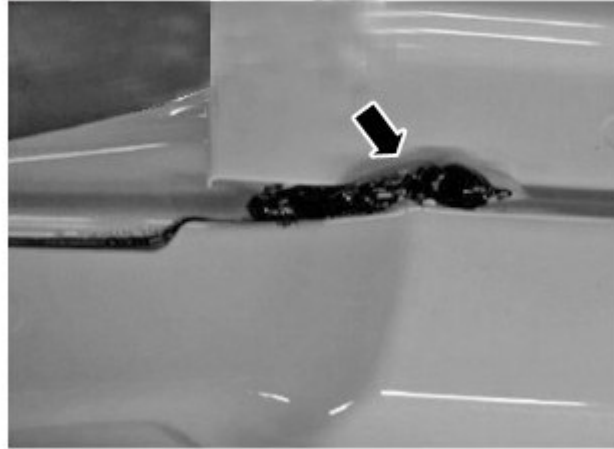


6.  **NOTE: The area must be clean and dry prior to applying the sealant.**

Seal over the gap at the rear of the roof ditch.



7. Make sure the sealant covers the gap at the rear of the roof.



E155268

8. Using the spare sealant nozzle, wet with soapy water to smooth the sealant in the J-Seal area.



E155269

9. A dabbing action with a wetted finger is effective for smoothing the sealant into the gaps without a mess.



10. Inspect to the standard shown.



11. . Install the right-hand Roof Moulding (see TOPIx Workshop Manual section 501-08).

12. Install the right-hand Rear Quarter Panel Moulding (see TOPIx Workshop Manual section 501-08).

13. Repeat the procedure to the left-hand side.