

TECHNICAL BULLETIN
LTB00502NAS2
12 FEB 2013



© Jaguar Land Rover North America, LLC

NOTE: The information in Technical Bulletins is intended for use by trained, professional Technicians with the knowledge, tools, and equipment required to do the job properly and safely. It informs these Technicians of conditions that may occur on some vehicles, or provides information that could assist in proper vehicle service. The procedures should not be performed by 'do-it-yourselfers'. If you are not a Retailer, do not assume that a condition described affects your vehicle. Contact an authorized Land Rover service facility to determine whether this bulletin applies to a specific vehicle.

This reissue replaces all previous versions. Please destroy all previous versions. Only refer to the electronic version of this TSB in TOPIX.

Changes are highlighted in gray

SECTION: 303-01A/B

Continual Unexplained Low Coolant Issues

AFFECTED VEHICLE RANGE:

LR2 (LF)	Model Year:	2013
	VIN:	DH311358-DH335632
Range Rover Evoque (LV)	Model Year:	2012-2013
	VIN:	CH000447-DH750389

MARKETS:

NAS

CONDITION SUMMARY:

Situation:

A continual unexplained low engine coolant level may be evident, with no leak evident from the engine coolant system



NOTE: Any faults found other than a leaking cylinder head core plug(s) must be carried out as a separate claim.

Cause: This may be caused by coolant loss through the threaded core plugs in the engine cylinder head.

Action: In the event of a customer concern of the above, refer to the Repair Procedure outlined below.

PARTS:



NOTE: The engine oil drain and refill procedure requires 6.0 Liters of oil; to be sourced locally and claimed under 'ZZZ001'.

LRN2279	Coolant (1L)	Quantity: 2
LR025306	Oil Filter	Quantity: 1
LR025048	Oil Drain Plug	Quantity: 1
STC50552	Loctite® 243	Quantity: 1

WARRANTY:

NOTE: The engine oil drain and refill procedure requires 6.0 Liters of oil; to be sourced locally and claimed under 'ZZZ001'.

NOTE: Repair procedures are under constant review, and therefore times are subject to change; those quoted here must be taken as guidance only. Always refer to TOPIx to obtain the latest repair time.

NOTE: DDW requires the use of causal part numbers. Labor only claims must show the causal part number with a quantity of zero.

DESCRIPTION	SRO	TIME (HOURS)	CONDITION CODE	CAUSAL PART
Re-seal core plug(s)	26.35.89/28	2.30	51	LR025389

NOTE: Normal Warranty policies and procedures apply.

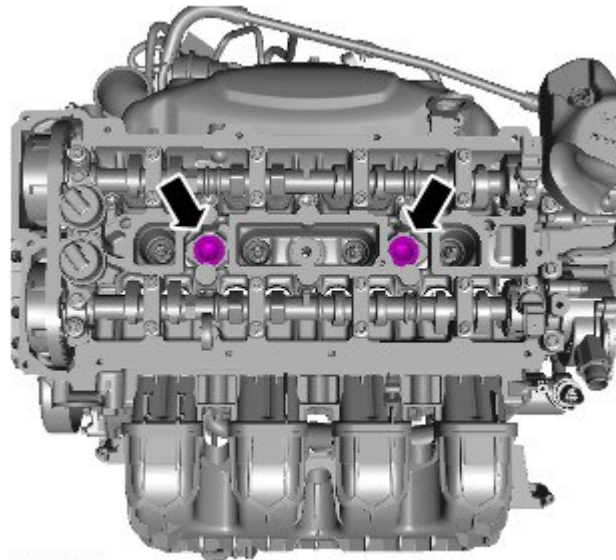
SERVICE INSTRUCTION:

NOTE: This procedure should only be carried out after a thorough inspection has shown no other causes of coolant loss. For further information refer to TOPIx Workshop Manual, section 303-03A/B: Engine Cooling - GTDi 2.0L Petrol - Engine Cooling Diagnosis and Testing.

1. Remove the valve cover (TOPIx Workshop Manual section 303-01A/B: Valve Cover).
2. Using a suitable coolant system pressure tester, pressurize the coolant system.

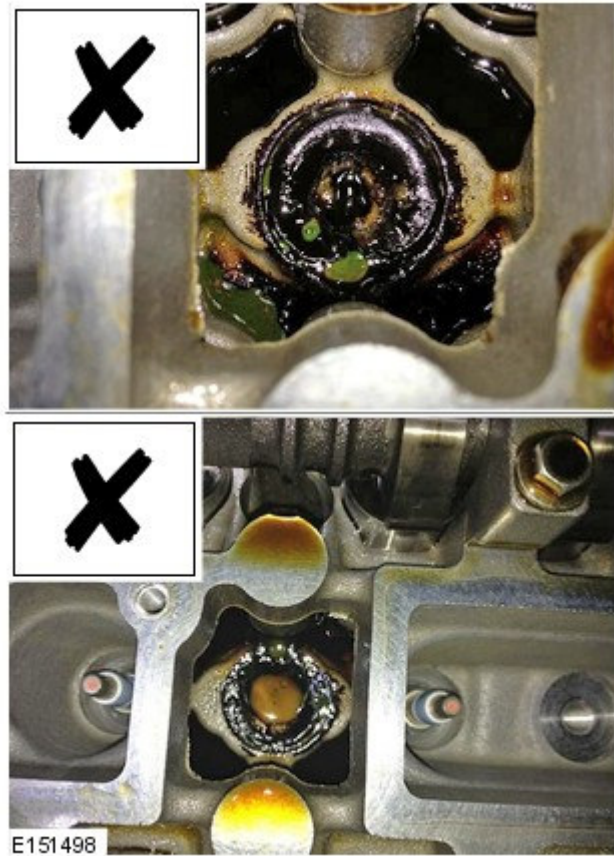
3. **NOTE: Do not remove the core plug(s) at this stage.**


Inspect both core plugs for signs of coolant leakage and/or congealed oil.



E151497

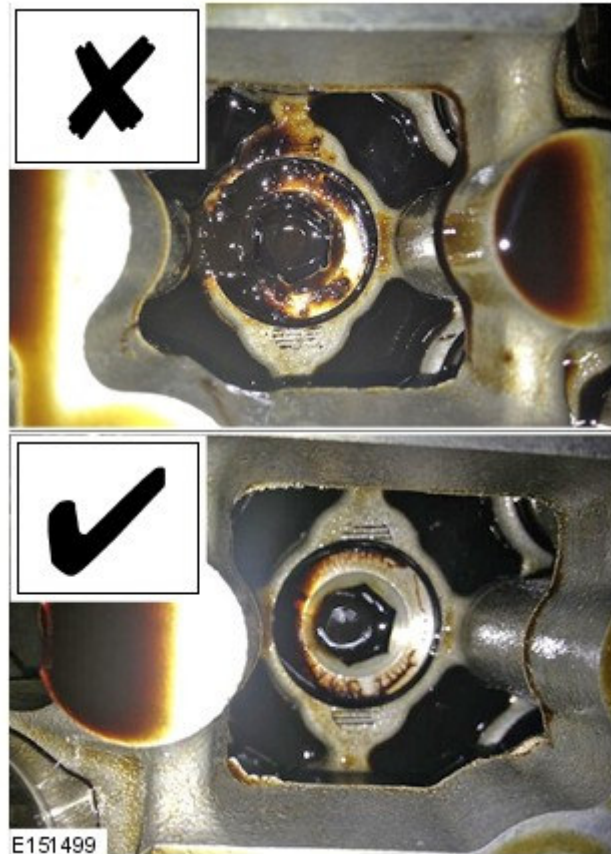
4. Inspect the core plugs for signs of coolant leakage.
 - If signs of coolant leakage are evident, carry on to step 6.
 - If signs of congealed oil and coolant leakage are evident, carry on to step 6.




5.  **NOTE: Fresh engine oil may be evident due to spillage when the valve cover is removed.**

Inspect the core plugs for signs of coolant leakage.

- If signs of congealed oil are evident, carry on to step 6.
- If no signs of congealed oil or coolant leakage are evident, carry on to step 13.

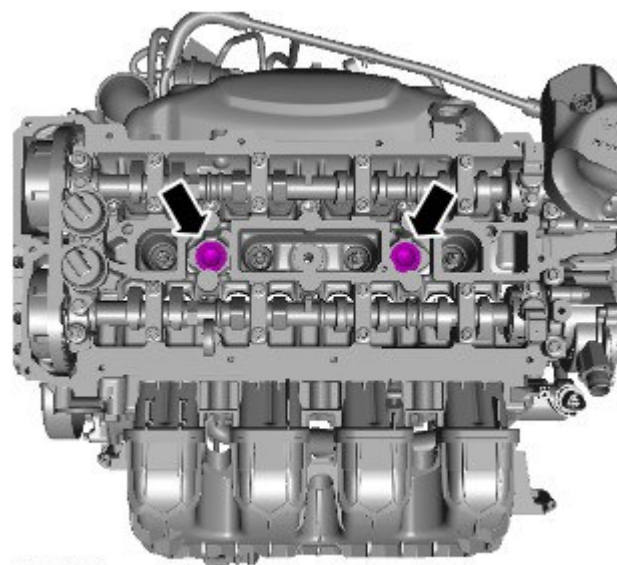


E151499

6. De-pressurize the coolant system.
7. Carry out a coolant system partial drain (TOPIx Workshop Manual section 303-03A/B: Cooling System Partial Draining, Filling and Bleeding).
8. Using a suitable cleaning fluid and cloth, clean any excess oil and/or coolant from around the core plugs and the spark plugs.
9.  **NOTE: The core plug can be re-used if no signs of damage are evident.**

Reseal the leaking core plug.

- Remove the core plug.
- Clean and dry both threads.
- Inspect the threads for signs of damage.
- Apply a continuous bead of Loctite® 243 to the core plug thread.
- Install the core plug and tighten to 75 Nm.
- If required, repeat the above steps to the other core plug.



E151497

10.  WARNING: Do not start the engine.

Fill the engine with coolant (TOPIx Workshop Manual section 303-03A/B: Cooling System Partial Draining, Filling and Bleeding).

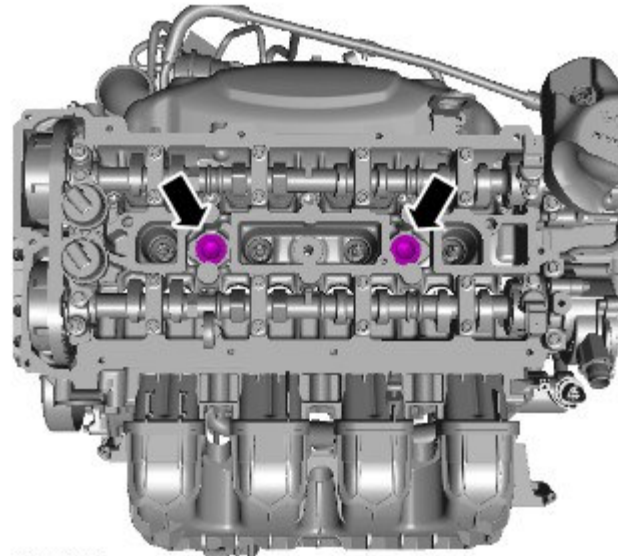
- Carry out steps 2-4 of the coolant filling procedure.

11.  CAUTION: Allow the Loctite® 243 to cure for at least one (1) hour before pressurizing the coolant system.

Using a suitable coolant system pressure tester, pressurize the coolant system.

12. Inspect both core plugs for signs of coolant leakage.

- If there are signs of coolant leakage from the core plug(s), carry out the necessary rectification procedure.
- If there are no signs of coolant leakage from the core plug(s), carry on to step 13.



E151497

13. De-pressurize the coolant system and remove the coolant system pressure tester.

14.  NOTE: Make sure that the area around the core plugs and spark plugs is clean and free from coolant, oil, and debris.

Install the valve cover (see TOPIx Workshop Manual, section 303-01A/B).

15.  NOTE: Only carry out this step if the coolant has been drained previously.

 NOTE: Do not install the engine undershield until after the engine oil and filter has been renewed.

Fill the engine with coolant (TOPIx Workshop Manual, section 303-03A/B: Cooling System Partial Draining, Filling and Bleeding).

- Carry out only steps 5-13 of the coolant filling procedure.

16.  NOTE: Only carry out this step if the core plug(s) required re-sealing.

Renew the engine oil and filter (see TOPIx Workshop Manual, section 303-01A/B: Valve Cover).