

Technical Service Bulletin



97 Alarm horn does not work or turns on without cause

97 13 36 2034322/1 July 10, 2013.

Model(s)	Year	VIN Range	Vehicle-Specific Equipment
A4	2012-2013	All	Not Applicable
A6	2012-2013		
A7	2010-2013		

Condition

- The customer complains of one of the following issues:
 - The vehicle alarm activates for no reason and it cannot be turned off.
 - The alarm horn does not work.
- One of the following DTC/fault symptom combinations is found in the comfort system control module, J393 (address word 46). The DTC can be static or sporadic:
 - **DTC 01134** (Alarm Horn H12) with fault symptom 4 (No signal/communication)
 - **DTC 01134** (Alarm Horn H12) with fault symptom 8 (Implausible signal)

Technical Background

The wiring harness insulation for the alarm horn can be damaged during the vehicle production assembly. Because the cable is routed through the plenum chamber, water can enter into the cable via the damaged insulation. The water causes the alarm to activate for no reason or it causes the alarm horn to not work.

Production Solution

Vehicle production assembly process optimized.

Service

1. Remove the plenum chamber cover.
2. Perform voltage and resistance measurements of the wires used by the alarm horn. See the wiring diagram in Elsa for the alarm horn pin assignment and wire routing: *Wiring diagrams>>Convenience system, from June 2011>>Page 35: Anti-theft alarm system sensor, Alarm horn, Comfort system central control module*
3. If the wiring is found to have a disruption, locate the point of damage on the wire harness. Carefully remove the webbing of the cables from the horn plug to the grommet:

For the A6 (C7) and A7:

The horn, cables, and grommet are located in the plenum chamber. The grommet is located on the bulkhead in the plenum chamber (Figures 1 and 2).

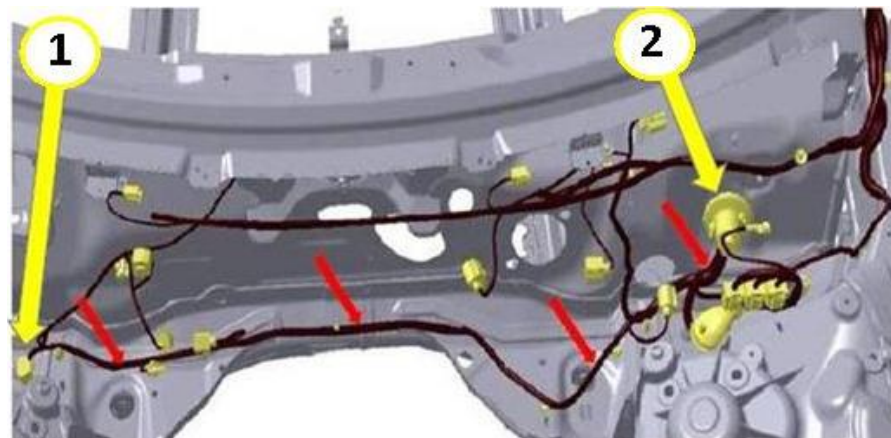


Figure 1. A6 (C7) and A7 horn plug (1), grommet on bulkhead/plenum chamber (2), and cable routing (red arrows).

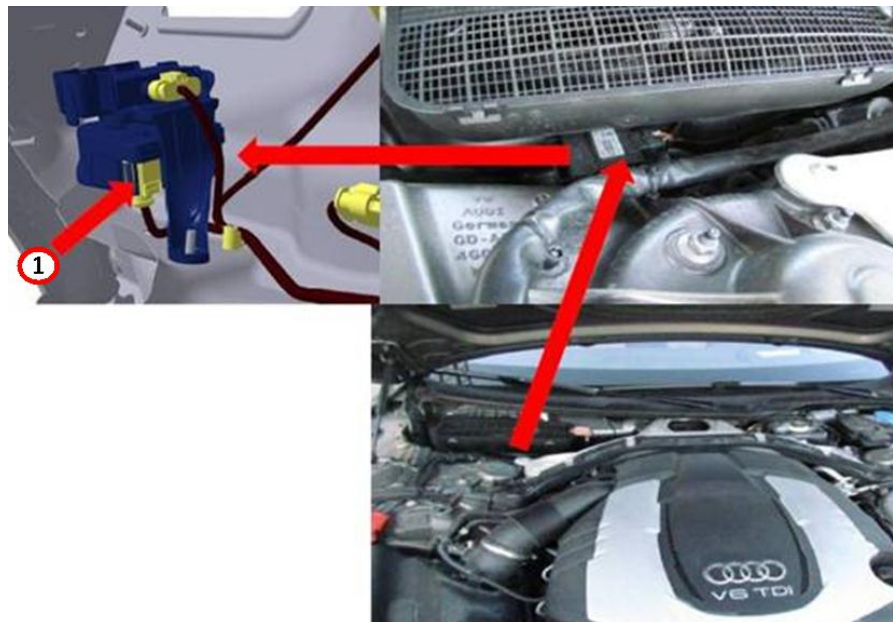


Figure 2. A6 (C7) and A7 horn position (1).

For the A4:

The horn, cables, and grommet are located in the plenum chamber. The cable routing is similar to that on the A6 (C7) and A7, but the grommet is located on the E-box and not on the bulkhead (Figures 3 and 4).

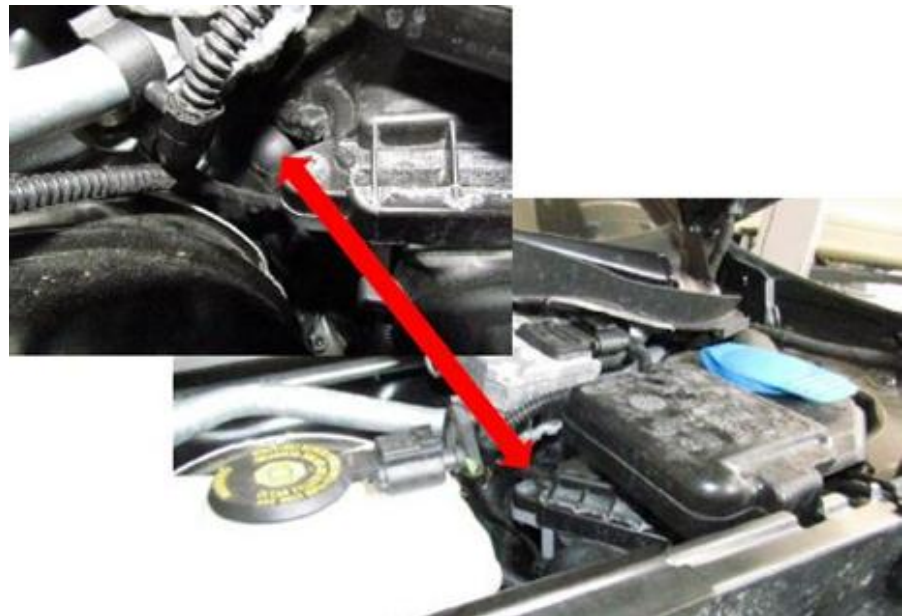


Figure 3. A4 grommet location.

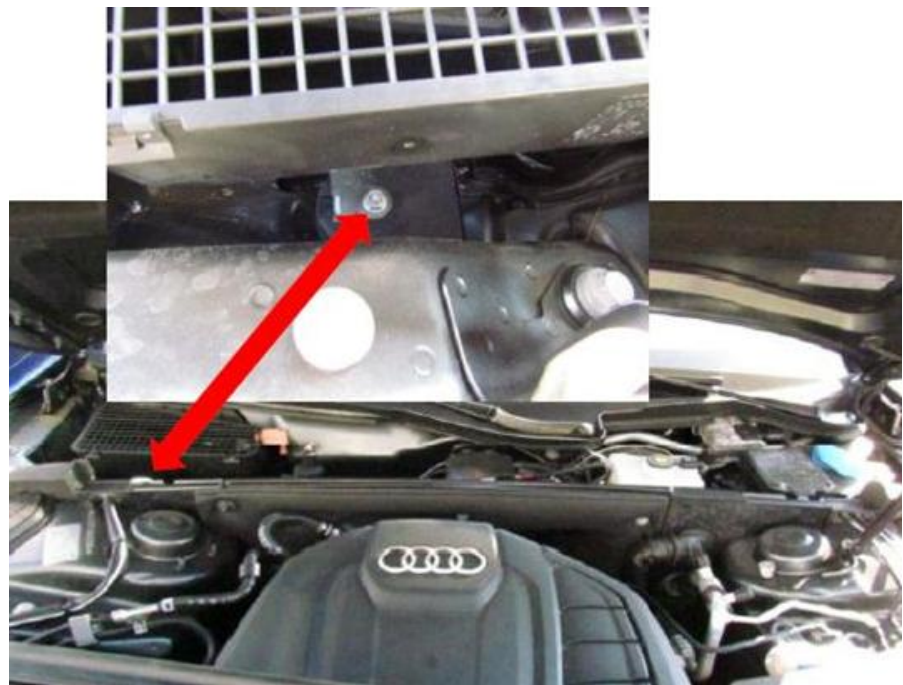


Figure 4. A4 horn position.

4. Examine the inside of the webbing for a white/green or red/green imprint. This imprint is a result of the production assembly damage to the wire insulation and of the corrosion caused by water ingress (Figure 5).

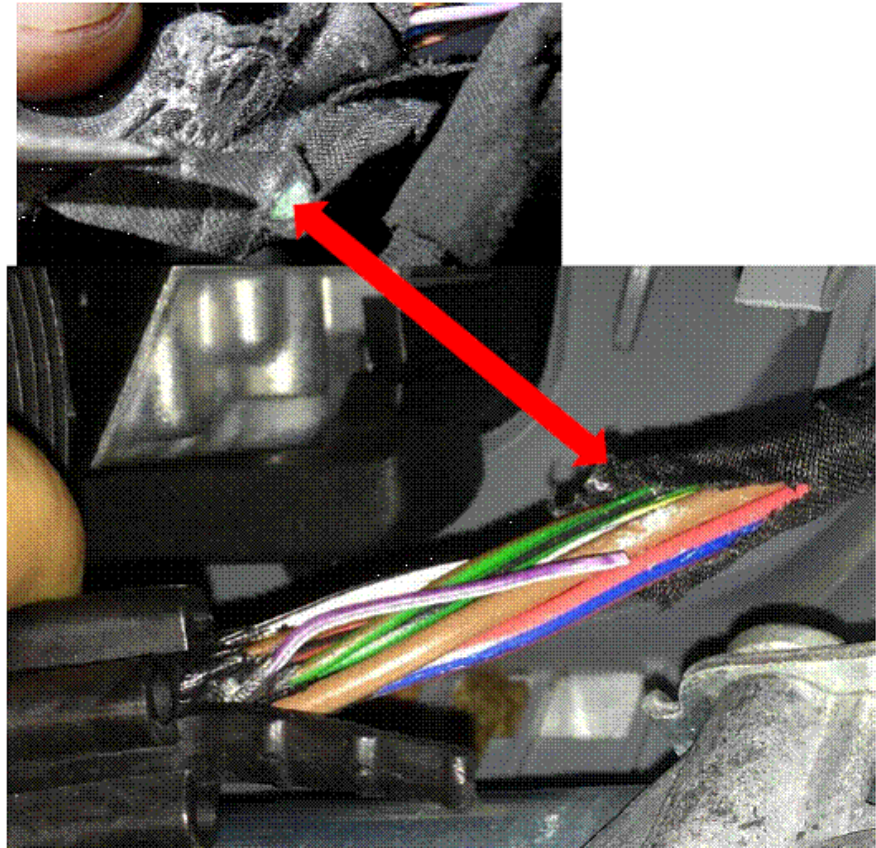


Figure 5. Color imprint on inside of webbing indicates point of damage.

5. Using the wiring repair kit **VAS 1978 B**, repair the damaged section as needed.

Technical Service Bulletin



Warranty

Claim Type:	Use applicable claim type. If vehicle is outside any warranty, this Technical Service Bulletin is informational only.		
Service Number:	9713		
Damage Code:	0025		
Labor Operations:	Plenum cover remove+reinstall, measurements & repair wiring	9713 9999	75 TU
Diagnostic Time:	GFF	0150 0000	Time stated on diagnostic protocol (Max 50 TU)
	Road test prior to service procedure	No allowance	0 TU
	Road test after service procedure	No allowance	0 TU
	Technical diagnosis at dealer's discretion (Refer to Section 2.2.1.2 and Audi Warranty Online for DADP allowance details)		
Claim Comment:	As per TSB #2034322/1		

All warranty claims submitted for payment must be in accordance with the *Audi Warranty Policies and Procedures Manual*. Claims are subject to review or audit by Audi Warranty.

Required Parts and Tools

Part Number	Part Description	Quantity
VAS 1978 B	Wiring repair kit	As needed
n/a	Digital Multi-meter	As needed

Additional Information

All parts and service references provided in this TSB (2034322) are subject to change and/or removal. Always check with your Parts Department and service manuals for the latest information.