

# Technical Service Bulletin



## 96 False warning by lane change assistant (Audi Side Assist)

96 13 76 2030583/3 September 23, 2013. Supersedes Technical Service Bulletin Group 96 number 13-56 dated May 2, 2013 for reasons listed below.

Model(s)	Year	VIN Range	Vehicle-Specific Equipment
A4/S4	2013	All	Audi Side Assist (PR Code 7Y1)
A5/S5	2013	All	Audi Side Assist (PR Code 7Y1)
RS 5	2013	900001-999999	Audi Side Assist (PR Code 7Y1)

## Condition

REVISION HISTORY		
Revision	Date	Purpose
3	-	Revised header data (Added customer codes and model years) Revised <i>Service</i> (Changed VAS-PC instructions to ODIS instructions; added SVM update instructions) Revised <i>Warranty</i> (Added labor operations)
2	5/2/2013	Revised header data (added VIN range) Revised <i>Service</i> (added instructions)
1	9/5/2012	Initial publication

- Customer complains that Audi Side Assist is providing false warnings (no vehicle is present). Concern may or may not be duplicated.
- No DTCs are present in the Audi Side Assist system.

## Technical Background

This condition occurs due to an incorrect hardware set created by the supplier.

## Production Solution

Improved hardware introduced into production.

# Technical Service Bulletin



## Service

This TSB applies only to A4/S4 sedans and A5/S5/RS 5 coupes. This information does not apply to the A4 allroad. There is a separate TSB for the A4 allroad.

1. Use the Control Module ODB function within ODIS to determine the hardware version, the production date, and the software part number of both the lane change assistance control module, J769, and the lane change assistance control module 2, J770:

### Using ODIS:

Start Diagnosis -> Fill out Engine Information from drop down menu -> Uncheck option for "Guided Fault Finding" --> Select Tab "Control module list" --> Scroll down list to "3C Lane Change Assistant" (ECU option will be greyed out) -> Right click on "3C Lane Change Assistant" and select "Identify control module" (Figure 1).

Wait for the information to populate. This usually takes 5-10 seconds.

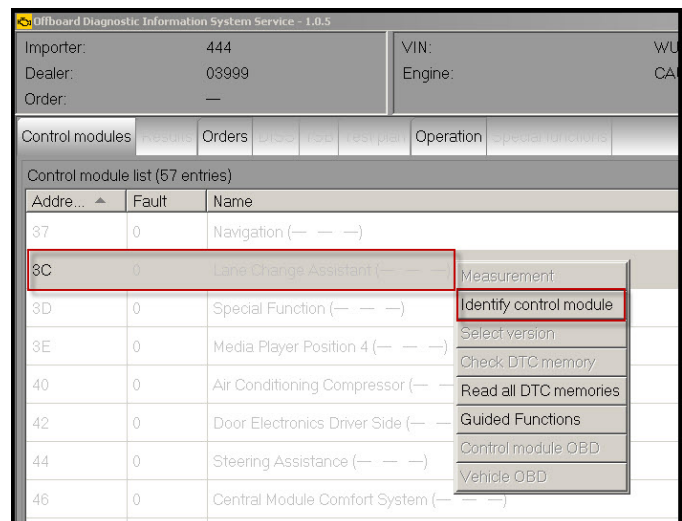


Figure 1. 3C Lane Change Assistant is greyed out until "Identify control module" is selected

Once the information has populated, right-click on "3C Lane Change Assistant" and select "Control Module ODB" (Figure 2).

Wait for the control module OBD Results tab to populate the ECU information.

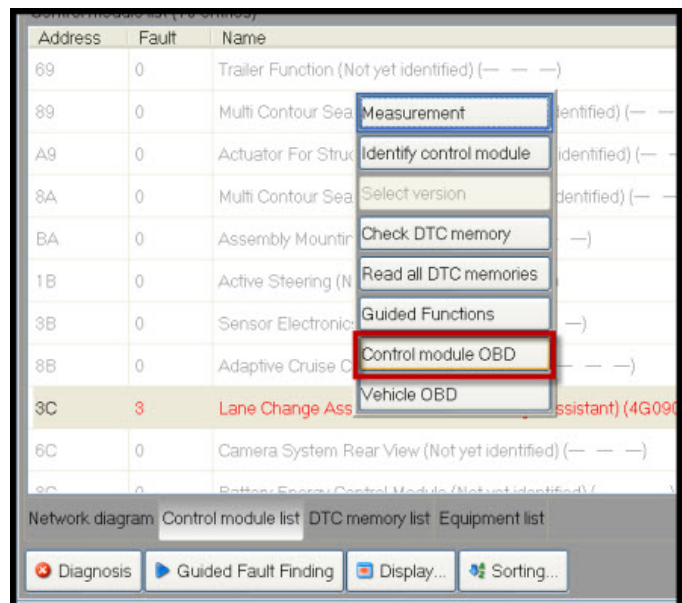
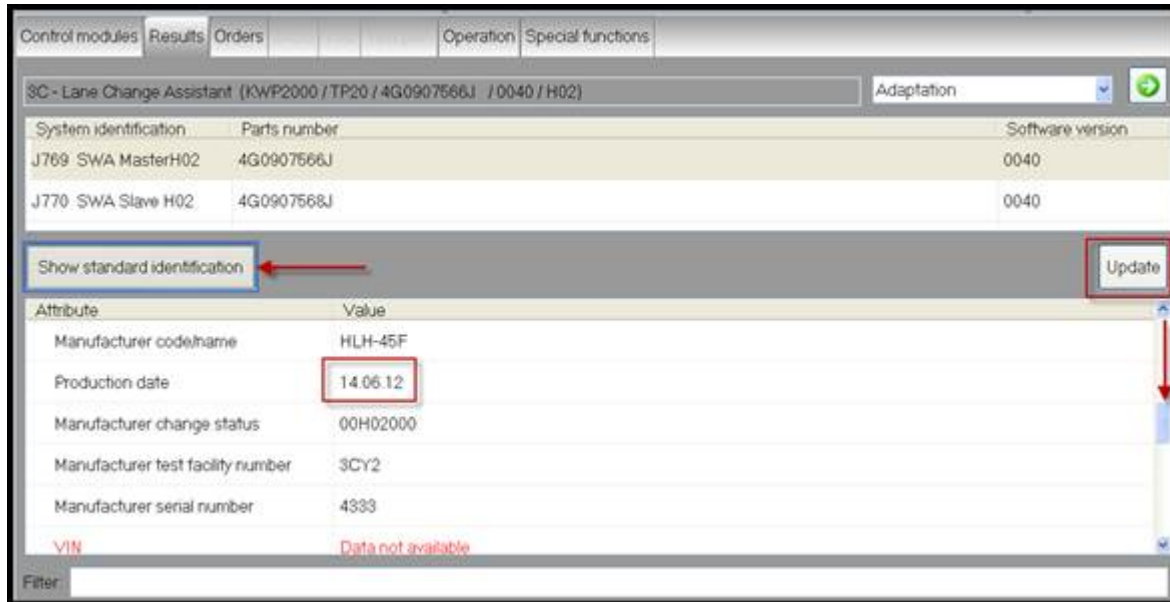


Figure 2. Software part number is identified as "VW/Audi part number" using ODIS

Under the Results tab, click on the button “Show Advanced Identification” (Figure 3), and then select the “Update” button on the right.



**Figure 3.** Control Module OBD screen showing part information and production date.

The part number, hardware version, and software version information will automatically populate at the top of the screen.

Click on the “SWA MasterH0X” at the top and then scroll down in the lower half of the screen until the “Production date” field (“X” can be any number, i.e. “SWA MasterH02” and will represent the hardware version of the ECU).

- Using first the software part numbers, then the hardware version, find the matching information on the left side of the table below. Proceed with the corresponding instructions on the right side. Only one set of instructions will apply.

# Technical Service Bulletin



<ul style="list-style-type: none"> <li>• Software part numbers are: 8T0 907 566 (J769) and 8T0 907 568 (J770).</li> <li>• One or both has hardware version H15.</li> </ul>	Replace only the control module with H15 hardware, then recalibrate the Audi Side Assist system.
<ul style="list-style-type: none"> <li>• Software part numbers are: 8T0 907 566 (J769) and 8T0 907 568 (J770).</li> <li>• Both have hardware version H16 or higher.</li> </ul>	Only recalibrate the system.
<ul style="list-style-type: none"> <li>• Software part numbers are: 8T0 907 566 A (J769) and 8T0 907 568 A (J770).</li> <li>• Both have hardware version H16.</li> <li>• At least one has a build date <i>before 3/2/2012</i>.</li> </ul>	Replace only the control module that has a build date before 3/2/2012 and recalibrate the system.
<ul style="list-style-type: none"> <li>• Software part numbers are: 8T0 907 566 A (J769) and 8T0 907 568 A (J770).</li> <li>• Both have hardware version H16.</li> <li>• Both have a build date <i>after 03/02/2012</i>.</li> </ul>	Only recalibrate the system.
<ul style="list-style-type: none"> <li>• Software part numbers are: 8T0 907 566 A (J769) and 8T0 907 568 A (J770).</li> <li>• Both have hardware version H17 or higher.</li> </ul>	Only recalibrate the system.
<ul style="list-style-type: none"> <li>• Software part numbers are: 8T0 907 566 B (J769) and 8T0 907 568 B (J770).</li> </ul>	Perform SVM software update and recalibrate the System

## SVM Update Instructions for vehicles with Part Number 8T0 907 568 B ONLY.

1. Follow all instructions in the attached TSB, 2011732 00 *Software Version Management (SVM), operating instructions*.
2. Update the parameterization of the master lane change assistance control module, J769, using the SVM action code as listed in the table below if necessary.

Model	Old Software Part Number	Old Software Version	New Software Part Number	New Software Version	SVM Code
A4/S4, A5/S5/RS 5	8T0 907 566 B	60	8T0 907 566 B	71	3CA010

# Technical Service Bulletin



## Warranty

<b>Claim Type:</b>	Use applicable claim type. If vehicle is outside any warranty, this Technical Service Bulletin is informational only.			
<b>Service Number:</b>	9635			
<b>Damage Code:</b>	0040			
<b>Labor Operations:</b>	Check ECU Identification Information	9635 9999	25 TU	
	Adjust control units for lane changing assistant (with backup camera adjustment included)	9635 1500	70 TU	
	OR			
	Remove and install rear bumper cover	6369 1900	70 TU	
	Check ECU Identification Information	9635 9999	25 TU	
	Remove and install 1 control unit for lane changing assistant	9635 1950	10 TU	
	Adjust control units for lane changing assistant	9635 1500	70 TU	
	OR			
	Remove and install rear bumper cover	6369 1900	70 TU	
	Check ECU Identification Information	9635 9999	25 TU	
	Remove and install 2 control units for lane changing assistant	9635 2050	20 TU	
	Adjust control units for lane changing assistant	9635 1500	70 TU	
	<b>Diagnostic Time:</b>	GFF	0150 0000	Time stated on diagnostic protocol (Max 140 TU)
		Road test prior to service procedure	0121 0002	10 TU
Road test after service procedure		0121 0004	10 TU	
Technical diagnosis at dealer's discretion (Refer to Section 2.2.1.2 and Audi Warranty Online for DADP allowance details)				
<b>Claim Comment:</b>	As per TSB #2030583/3			

# Technical Service Bulletin



All warranty claims submitted for payment must be in accordance with the *Audi Warranty Policies and Procedures Manual*. Claims are subject to review or audit by Audi Warranty.

## Required Parts and Tools

Part Number	Part Description	Quantity
8T0907566	Control unit for lane change assist (MASTER)	As needed
8T0907568	Control unit for lane change assist (SLAVE)	As needed
Or		
8T0907566A	Control unit for lane change assist (MASTER)	As needed
8T0907568A	Control unit for lane change assist (SLAVE)	As needed

## Additional Information

All parts and service references provided in this TSB (2030583) are subject to change and/or removal. Always check with your Parts Department and service manuals for the latest information.