

NUMBER: 23-013-13

GROUP: Body

DATE: March 22, 2013

This bulletin is supplied as technical information only and is not an authorization for repair. No part of this publication may be reproduced, stored in a retrieval system, or transmitted, in any form or by any means, electronic, mechanical, photocopying, or otherwise, without written permission of Chrysler Group LLC.

SUBJECT:

Creak Or Click Noise From Dual Pane Sunroof

OVERVIEW:

This bulletin involves inspecting the dual pane sunroof for a potential creak, click or rattle and if necessary, replacing the dual pane sunroof frame assembly.

MODELS:

2012 - 2013 WK Grand Cherokee

NOTE: This bulletin applies to vehicles built prior to November 8, 2012 (MDH 1108XX) equipped with dual pane sunroof (sales code GWJ).

SYMPTOM/CONDITION:

The customer may experience a creak, click or rattle from the dual pane sunroof.

DIAGNOSIS:

Push up on the front corner(s) of the fixed pane, then push out (cross-car) on the sunroof frame at the fixed pane's forward attaching point. Repeat several times.

NOTE: Another way to confirm is to introduce body flex at a very slow speed (idle speed) while slowly turning right then left. Remove the rear pane's forward attachment screw on the side where the noise is heard.

If removing the screw turns off the noise or a creak or click noise is heard, perform the Repair Procedure.

PARTS REQUIRED:

Qty.	Part No.	Description
1	68081053AC	Frame, Sunroof (Dual Pane)

REPAIR PROCEDURE:

1. Remove the sunroof wind deflector. Refer to the detailed procedures available in DealerCONNECT > TechCONNECT under: Service Info > 23 - Body > Sunroof, Dual Pane > DEFLECTOR, Wind > Removal.

NOTE: The wind deflector must be removed prior to sunroof assembly removal as power is required to cycle the sunroof open and closed prior to removal.

NOTE: Make sure that sunroof is in the fully closed position with the sunshade in the fully open position prior to the next step.

2. Remove the dual pane sunroof assembly. Refer to the detailed procedures available in DealerCONNECT > TechCONNECT under: Service Info > 23 - Body > Sunroof, Dual Pane > Removal.
3. Remove the front sunroof glass. Refer to the detailed procedures available in DealerCONNECT > TechCONNECT under: Service Info > 23 - Body > Sunroof, Dual Pane > GLASS, Sunroof, Front > Removal.

NOTE: The sunroof mechanism covers can be separated from the tabs on the glass panel and slid out the back of the sunroof frame track to gain access to the front sunroof glass fasteners (Fig. 1).

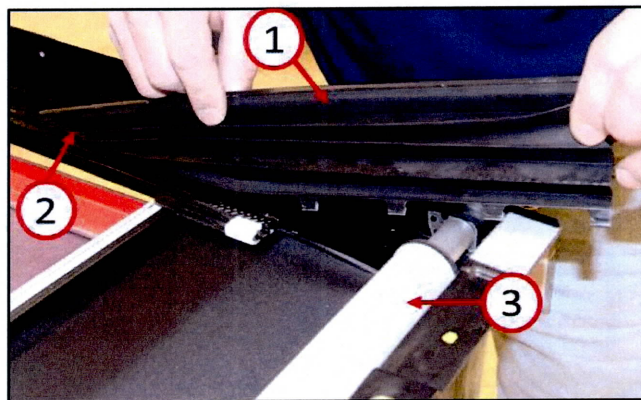


Fig. 1 Mechanism Cover Removal

- 1 - Mechanism Cover
- 2 - Sunroof Frame (Mechanism Cover Track)
- 3 - Sunroof Sunshade

-
4. Remove the rear sunroof glass. Refer to the detailed procedures available in DealerCONNECT > TechCONNECT under: Service Info > 23 - Body > Sunroof, Dual Pane > GLASS, Sunroof, Rear > Removal.
 5. Remove the sunroof and sunshade drive motors including harness. Refer to the detailed procedures available in DealerCONNECT > TechCONNECT under: Service Info > 08 - Electrical > 8N - Power Systems > Power Top, Sunroof > MOTOR, Sunroof > Removal > DUAL PANE SUNROOF OR SUNSHADE.
 6. Remove the sunroof drain channel. Refer to the detailed procedures available in DealerCONNECT > TechCONNECT under: Service Info > 23 - Body > Sunroof, Dual Pane > CHANNEL, Sunroof Drain > Removal.

7. Remove the sunroof sunshade. Refer to the detailed procedures available in DealerCONNECT > TechCONNECT under: Service Info > 23 - Body > Sunroof, Dual Pane > SUNSHADE, Sunroof > Removal.

NOTE: The sunshade retraction spring force is significant. Firmly hold onto the sunshade fabric roll to control it from rotating while releasing the shade aluminum beam and white clips from the overmold shuttles (**Fig. 2**).

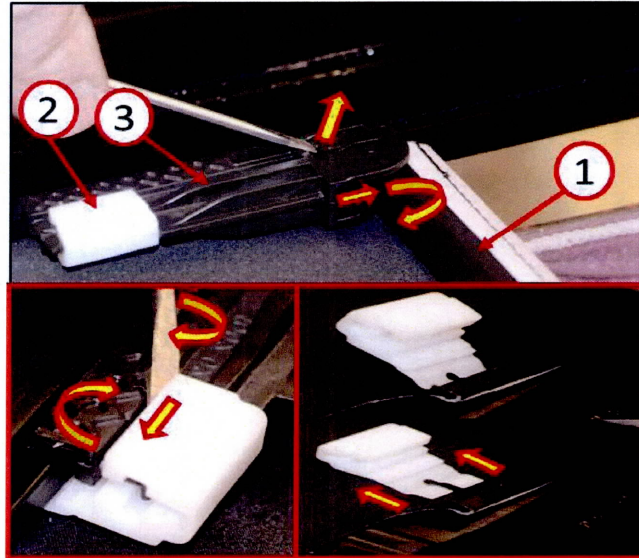


Fig. 2 Disengage Sunshade

- 1 - Sunshade Aluminum Beam
- 2 - White Retaining Clips (Retain Sunshade Fabric)
- 3 - Plastic Overmold/Shuttle

NOTE: Once the spring loaded pin is pressed to release the sunshade from the frame do not fully remove the sunshade until the spring tension on the shade is locked. Use care when removing the sunshade, by applying light pulling pressure to the steel locking pin while rotating the sunshade barrel forward. The plastic end feature of the barrel will rotate from the 12 o'clock position to the 3 o'clock position if done correctly allowing the lock pin to extend out of the barrel locking the spring tension of the sunshade. If the sunshade spring lock is released before it engages in the internal slot, the sunshade has to be replaced with a new one. Once released, the sunshade spring tension can not be reset (**Fig. 3**).

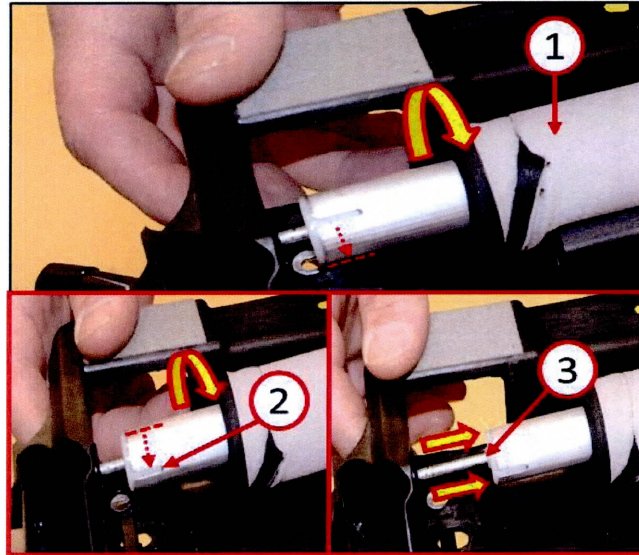


Fig. 3 Sunshade Removal

- 1 - Sunshade (Fabric Roll)
- 2 - Plastic End Feature (Sunshade Barrel)
- 3 - Steel Locking Pin (Sunshade Spring Lock Mechanism)

8. Replace the dual pane sunroof frame. Reinstall the removed components onto the new frame by reversing the previous procedures.

POLICY:
Reimbursable within the provisions of the warranty.

TIME ALLOWANCE:

Labor Operation No:	Description	Amount
23-30-56-9A	Assembly / Module - Dual Pane Sunroof Frame (X - Skill Level)	3.4 Hrs.

FAILURE CODE:

ZZ	Service Action
----	----------------