



Instructions Specifically Developed  
For Installation by Dealer Technicians

Description: RNS 315 Retrofit

Part Number: Radio: 1K0035274 + Index  
GPS Antenna: 000 051 502F  
GPS label 1K0 010 467T

Vehicles: 2010+ Jetta, Tiguan, Passat, GTI, CC, EOS  
2012+ Beetle

Revised : 8/28/2013

Related document: TB **91 10 12** June 1, 2010 **2020627**



#### Warning

- Read entire instructions thoroughly before starting
- Improper installation procedures can cause serious personal injury
- Installation should be performed only by a qualified technician
- Beware of sharp edges
- Always wear safety glasses to help protect eyes
- Use caution when using hand tools

© 2011 Volkswagen of America, Inc. All rights reserved. Information contained in this document is based on the latest information available at the time of printing and is subject to the copyright and other intellectual property rights of Volkswagen of America, Inc., its affiliated companies and its licensors.

All rights are reserved to make changes at any time without notice. No part of this document may be reproduced, stored in a retrieval system, or transmitted in any form or by any means, electronic, mechanical, photocopy, recording or otherwise, nor may these materials be modified or reposted to other internet sites, with the expressed written permission of the publisher



Description:  
Vehicles:

RNS 315 Retrofit  
2011 Jetta

Tool Required for Installation:



Trim Removal Tool



Socket driver



T20 Torx

Parts Contained in This Kit:



1K0 035 274 RNS 315  
Radio



000 051 502F GPS  
Antenna  
(ordered separately)



GPS label  
1K0 010 467T



Description:  
Vehicles:

RNS 315 Retrofit  
2011 Jetta

Step 1:

Disconnect the (-) negative lead from the battery.

Step 2:

Remove radio face plate trim.



Step 3:

Remove the four T20 torx screws and remove the radio.



Step 4:

Unplug the wiring quad-lock connector and the antenna





Description:  
Vehicles:

RNS 315 Retrofit  
2011 Jetta

Step 5:

Install GPS antenna to the right of the defrost vent. Using the plastic trim tool, push the GPS wire under the lip of the dash, where it meets the glass.



Step 6:

Route the antenna cable through the side panel and underneath the glove box.



Step 7:

Run the cable up into the radio cavity, and use ties to secure the excess cable. Place the excess cable under the radio.





Description: RNS 315 Retrofit  
Vehicles: 2011 Jetta

Step 8:

Install the quad-lock connector, AM/FM antennas, and GPS antenna on the RNS315 radio. The GPS antenna connects to the blue radio connector.



Step 9:

Install the RNS315 radio and fasten it in place using the T20 torx screws and reinstall trim.



Step 10:

Connect battery cable and turn on ignition and Enter radio theft lock code.



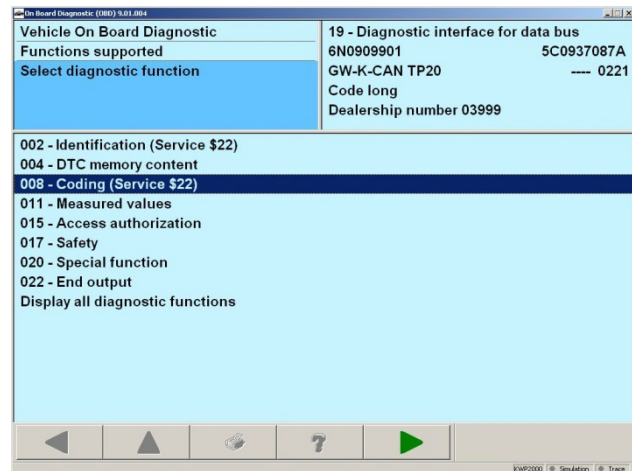


Description:  
Vehicles:

RNS 315 Retrofit  
2011 Jetta

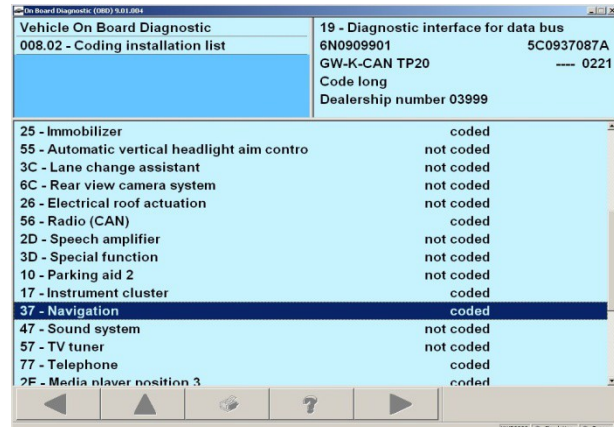
Step 11:

Connect a 505X to the vehicle data-link connector to the car and code the Navigation to the car. Go to Vehicle Self-Diagnosis and select 19 Diagnostic Interface for databus. Then select 008 coding (service \$22)



Step 12:

Go to 008.02 – Coding Installation List.



Step 13:

Select 37-Navigation. It will now show coded. Select vehicle position detection to change to not coded. Press forward arrow and coding will be Performed.



Description:  
Vehicles:

RNS 315 Retrofit  
2011 Jetta

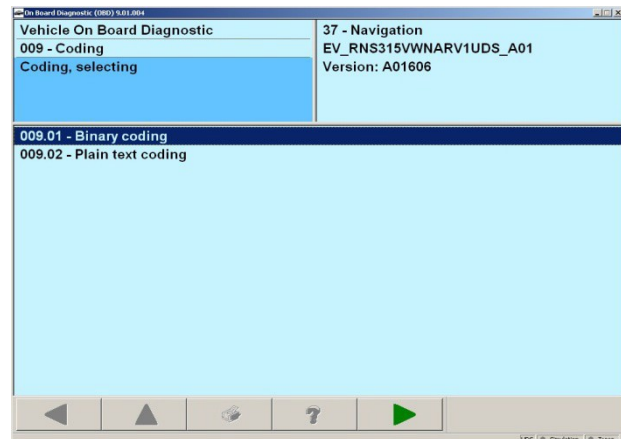
Step 14:

Go to Vehicle Self-Diagnosis and select 37-  
Navigation. Then select 009-coding.



Step 15:

Select 009.01- Binary coding



Step 16:

Enter coding value of  
Without fender audio

04 00 04 01 02 00 00 00 00 00 10 00

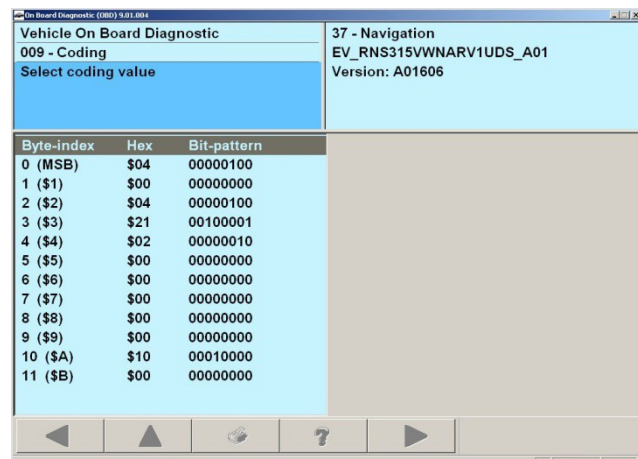
For vehicles with back up camera

04 00 04 41 02 00 00 00 00 00 10 00

Press forward arrow to perform the coding.

**NOTE:**

Only radio's with C suffix or newer will work  
With Fender Audio.





Description: RNS 315 Retrofit  
Vehicles: 2011 Jetta

Step 17:  
Disconnect compass module. Refer to  
Elsa web for module location and removal.



Step 18:  
Install GPS warning label on driver side B Pillar.