

# Technical Service Bulletin



## 91 Front TopView camera cannot be calibrated; picture appears upside down

91 13 16 2035912/1 November 27, 2013.

Model(s)	Year	VIN Range	Vehicle-Specific Equipment
A6/A7	2013-2014	Not Applicable	Top View / Corner View Camera System
A8	2013-2014	Not Applicable	Top View Camera System

## Condition

After the camera control module, J928, has been replaced, the front image is upside down and cannot be changed (Figure 1). The calibration cannot be completed.



Figure 1. Upside down image.

## Technical Background

The coding of the camera control module is not completed correctly.

## Production Solution

Revised software.

# Technical Service Bulletin



## Service

1. Using ODIS, enter binary coding of the J928 control module:

- a. Right-click on the 6C module, then select *Control module OBD* (Figure 2).

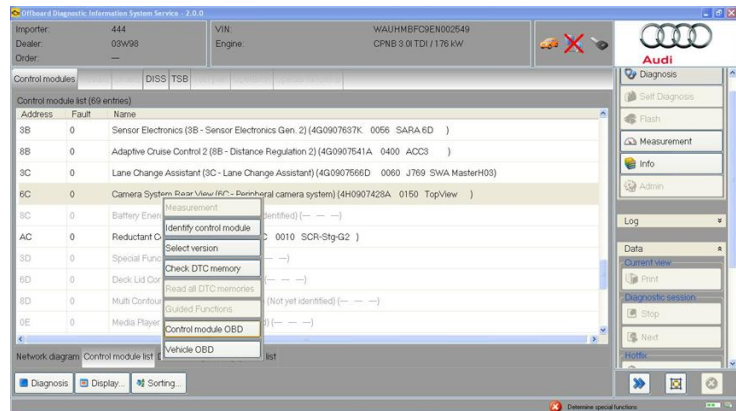


Figure 2. Selecting Control module OBD.

- b. Choose *Code* from the menu (Figure 3). The tester will state that the operation failed. Click past this warning message and proceed.

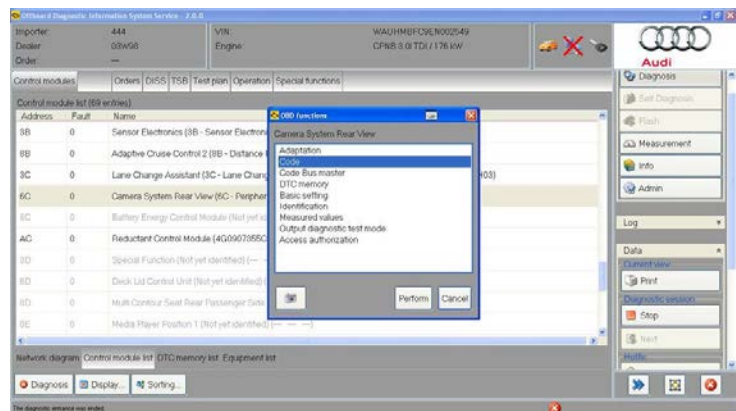


Figure 3. Selecting Code.

- c. Click the *Binary Coding* button at the bottom of the screen (Figure 4).

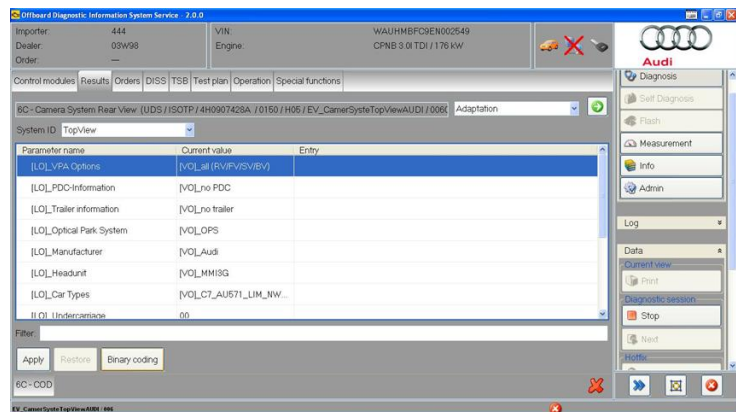


Figure 4. Binary Coding button at bottom of screen.

# Technical Service Bulletin



2. Read the value of Byte 1 in the *Current hex value* column (Figure 5). Record this number for future use.

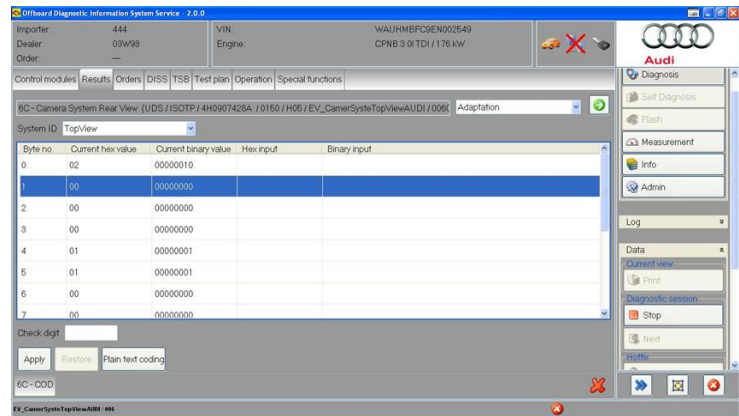


Figure 5. Current value of Byte 1.

3. Click on the *Hex input* column next to Byte 1 and change the value based on the following list:
  - A6/A7: Change value to HEX 08
  - A8 MY2011-2013: Change value to HEX 02
  - A8 MY 2014+: Change value to HEX 13
4. Apply the value (Figure 6).

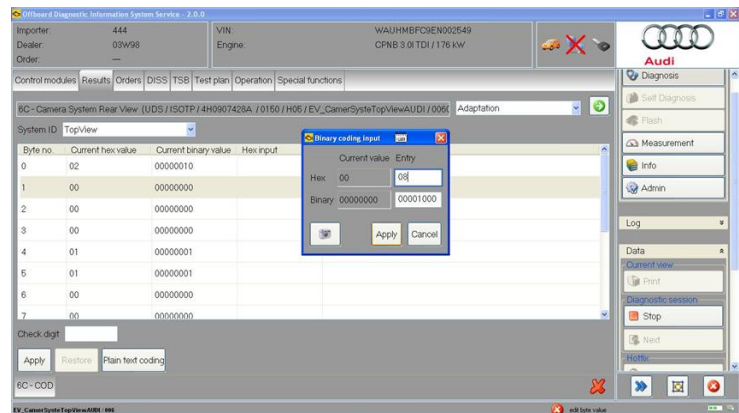
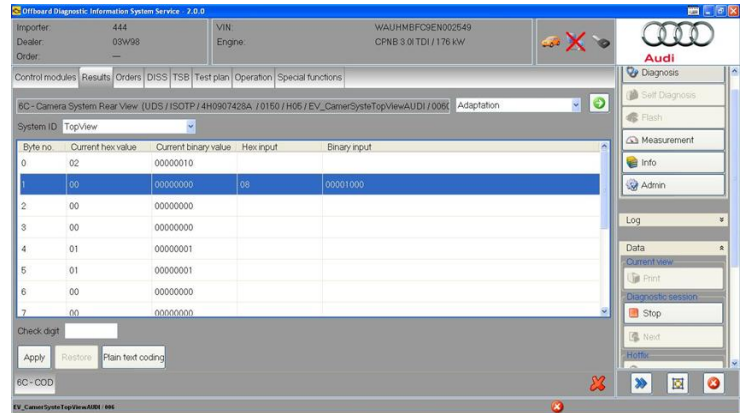


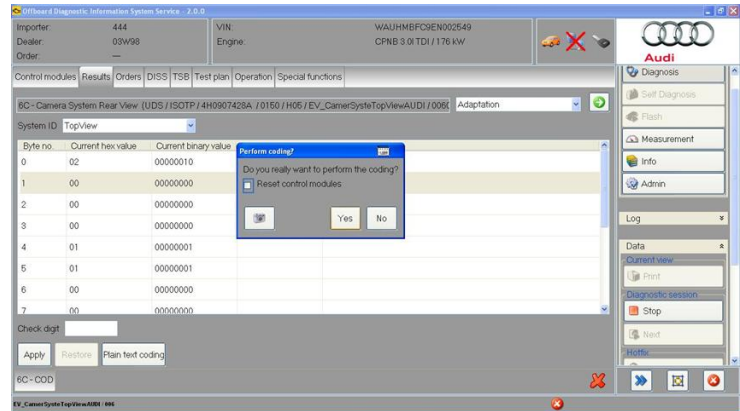
Figure 6. New HEX value entered. Click Apply button.

5. Choose *Apply* again (Figure 7).



**Figure 7.** New HEX value entered. Click *Apply* button.

6. On the confirmation page, uncheck the option to *Reset control modules*. Select “Yes” (Figure 8). Two more errors will appear, stating that the values cannot be checked, and that the read operation failed. Click past these errors and the new coding value will now be in byte 1.



**Figure 8.** Uncheck ‘Reset control modules’. Perform the coding.

7. Repeat steps 3 – 6, but instead change Byte 1 back to the original value written down in Step 2. In Step 6, again uncheck *Reset control modules* when applying the coding.

# Technical Service Bulletin



## Warranty

<b>Claim Type:</b>	Use applicable claim type. If vehicle is outside any warranty, this Technical Service Bulletin is informational only.		
<b>Service Number:</b>	9084		
<b>Damage Code:</b>	0039		
<b>Labor Operations:</b>	Code camera control module	9084 2599	20 TU
<b>Diagnostic Time:</b>	GFF – Checking and clearing fault codes included in existing labor operations	No allowance	0 TU
	Road test prior to service procedure	No allowance	0 TU
	Road test after service procedure	No allowance	0 TU
	Technical diagnosis at dealer's discretion (Refer to Section 2.2.1.2 and Audi Warranty Online for DADP allowance details)		
<b>Claim Comment:</b>	As per TSB #2035912/1		

## Additional Information

All parts and service references provided in this TSB (2035912) are subject to change and/or removal. Always check with your Parts Department and service manuals for the latest information.