

Technical Bulletin

Model(s)	Year	Eng. Code	Trans. Code	VIN Range From	VIN Range To
Jetta Sedan, Jetta SportWagen, Jetta Wagon, Rabbit, Golf, Golf Wagon	2009-2013	2.5L (CBTA, CBUA)	5 spd Manual (MQ250) 6 spd Automatic (AQ250)	All	All
Passat, Beetle, Beetle Convertible	2012-2013	2.5L (CBTA, CBUA)	5 spd Manual (MQ250) 6 spd Automatic (AQ250)	All	All

Condition

15 13 01 January 2, 2013 2032173 Supersedes T.B. V151204 dated December 21, 2012 to update labor operation numbers.

Camshaft Adjustment Valve 1 -N205- Diagnosis

One or more of the following fault codes may be stored in the ECM Fault Memory:

DTC	Description
P0011	"A" Camshaft Position (Bank1) Timing over-advanced or System Performance
P000A	"A" Camshaft Position Slow Response (Bank 1)
P052A	Cold Start "A" Camshaft Position Timing Over-Advanced

Note:

DO NOT diagnose or replace components due to camshaft position faults **before** performing the repair procedure as outlined in this bulletin.

DO NOT diagnose or replace camshaft control valve **before** performing the repair procedure as outlined in this bulletin.

Technical Background

Completing the GFF function test and performing basic settings on the camshaft adjustment valve are essential to diagnose proper operation and to avoid unnecessary replacements.

Technical Bulletin

Production Solution

Optimized engine cleaning procedure in production.

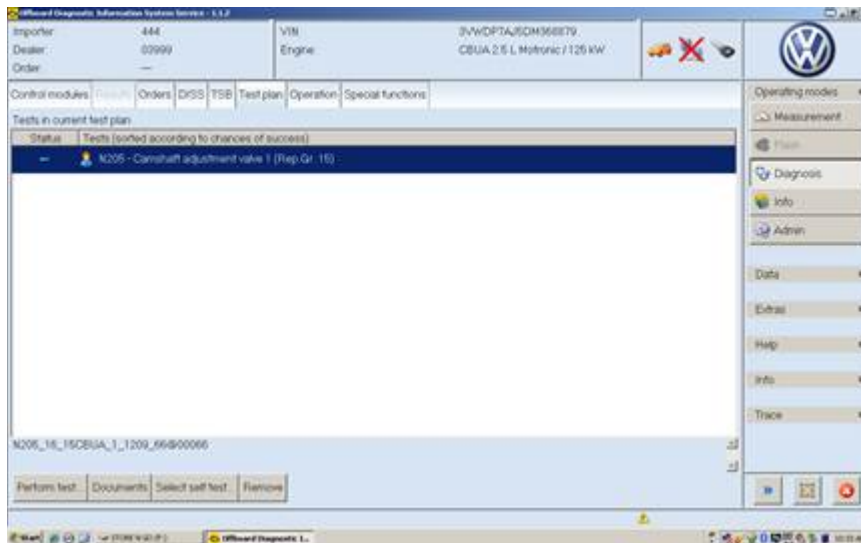
Service



Note:

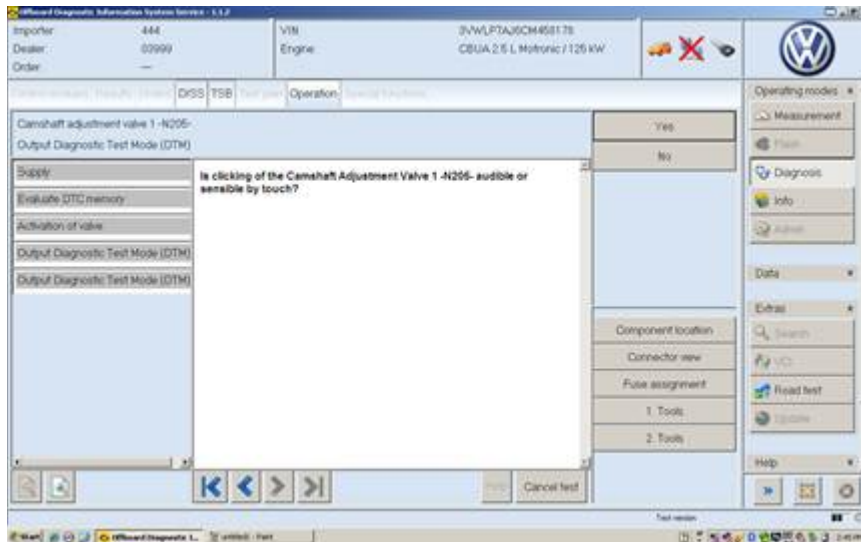
Test steps for this bulletin are written for diagnosis using Off-board Diagnosis Information System (ODIS). Though the tests performed will be the same, the process required to run the function tests may be different if VAS-PC is used.

Perform Guided Fault Finding test plan for N205 – Camshaft adjustment valve 1 to determine operation of valve



- Once ODIS has loaded, and the vehicle information has been updated, select the “Test Plan” top tab.
- Select either the “Select self test” button and locate the test plan for the “N205 - Camshaft adjustment valve 1,” or utilizing the search button in the “Extras” drop down side tab, search for “N205” with the object type “Test” selected.
- Attach the “N205 – Camshaft adjustment valve 1 (Rep.Gr.15)” test to the test plan list.
- Highlight the N205 – Camshaft adjustment valve 1 test plan and select “Perform Test”.

Technical Bulletin

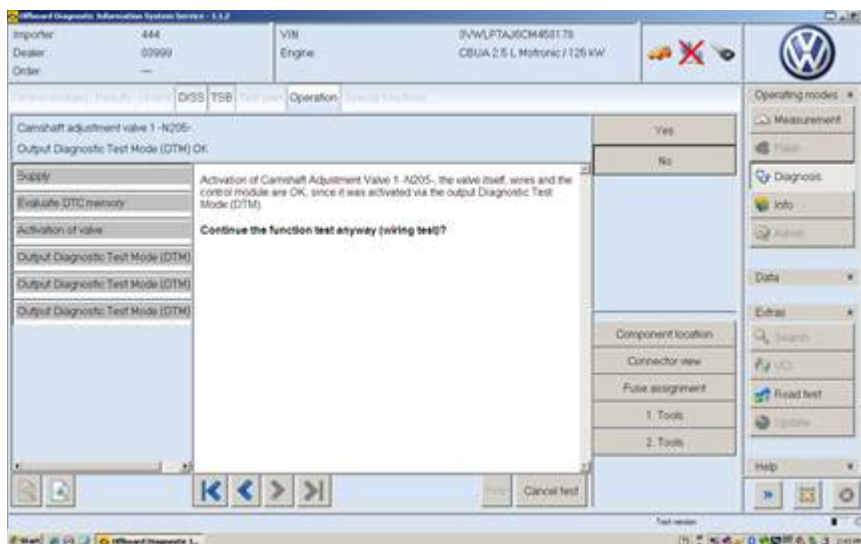


- When the test starts, the Camshaft adjustment valve - N205- will be activated via the output diagnosis test mode, listen and/or feel for an audible “click” sound coming from the N205 adjustment valve
- Answer on screen prompts



Tip:

The audible “click” sound may be heard easier if the engine compartment is open



- If audible “click” noise **is** heard, the valve itself, wires and the control module are OK.
- If prompted to continue function test, select “No”
- Complete remainder of test plan.
- If audible “click” noise **is not** heard, continue Guided Fault Finding based diagnosis.



Tip:

If audible “click” noise is heard, the N205 Camshaft adjustment valve is operational, and basic settings must be performed to verify full functionality of the camshaft adjustment system.

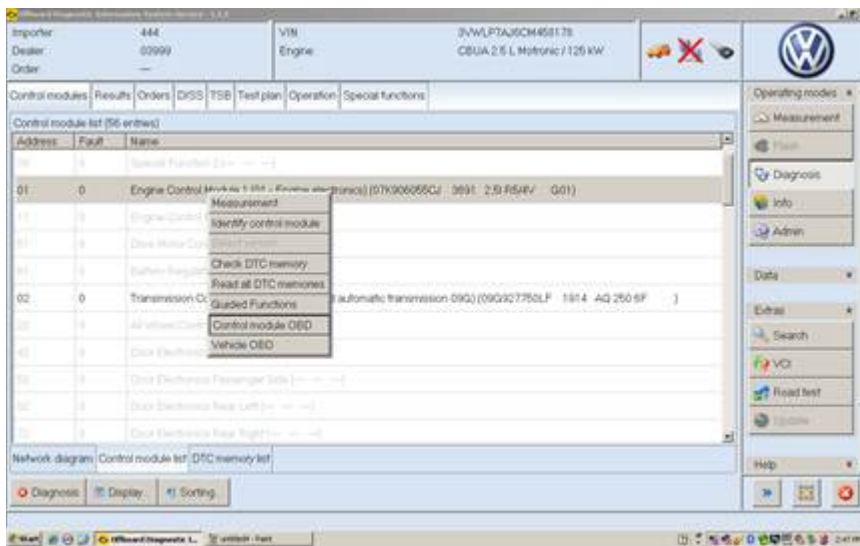
Technical Bulletin

Perform basic settings to verify proper functionality of N205 - Camshaft adjustment valve 1

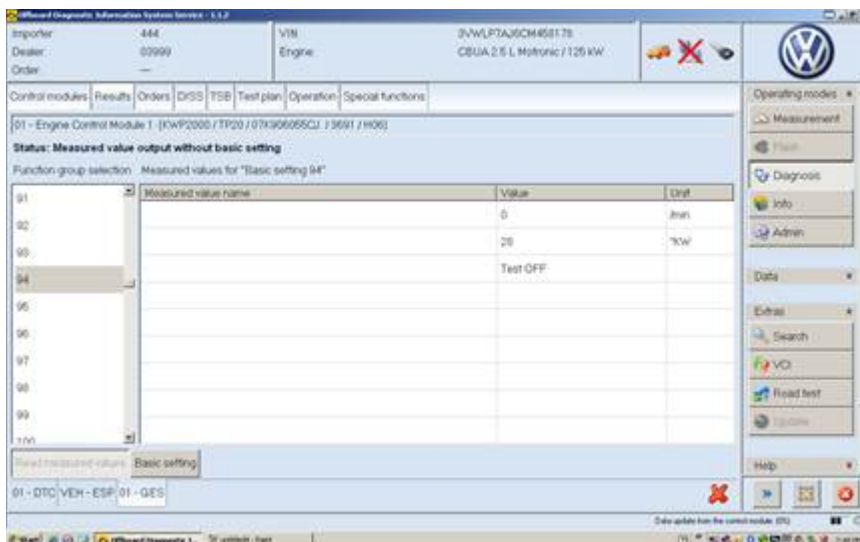


Note:

The engine must be running at idle, with the transmission in the park or neutral positions, in order to perform the following procedure.

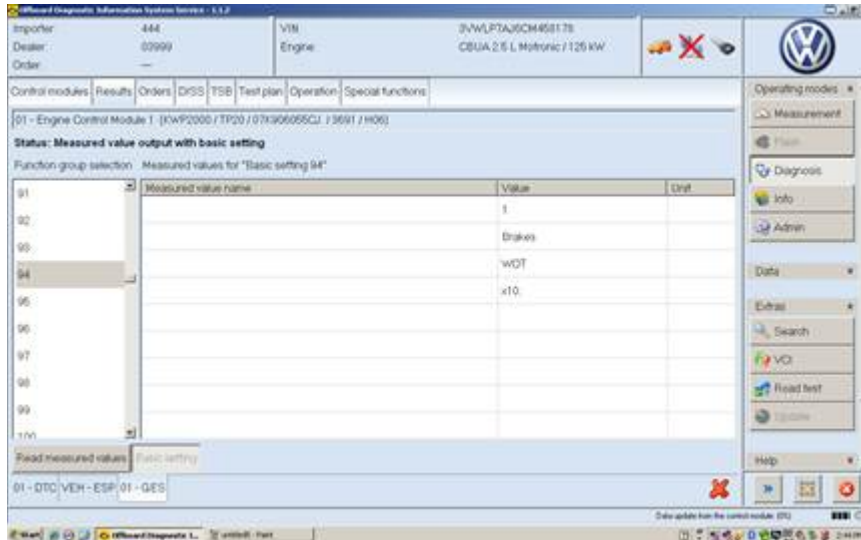


- Open the “Control modules” top tab.
- Right click on the engine control module in the control module list and select “Control module OBD.”
- Select “Basic Setting”.

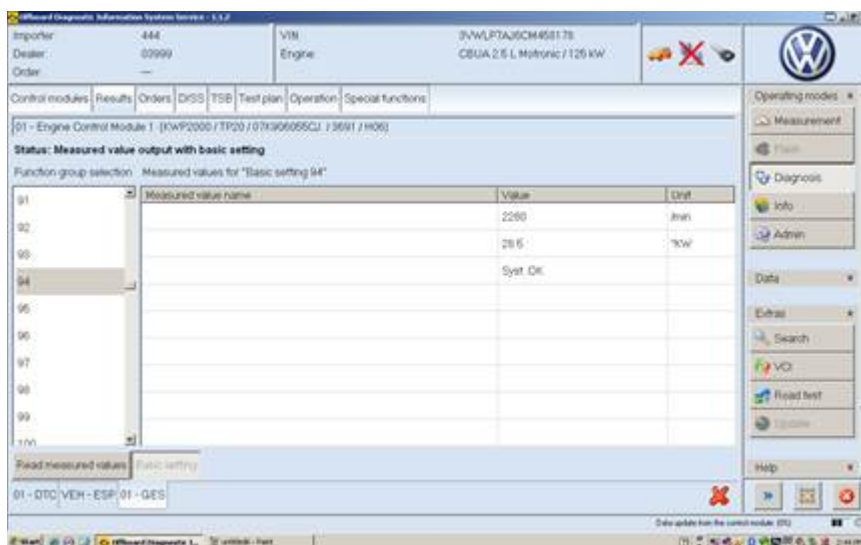


- Scroll through the function group selection list and select function group “94”.
- Select “Read measured values” button.

Technical Bulletin



- Select “Basic setting” button.
- Simultaneously hold the brake pedal and press the throttle pedal to “wide open throttle” for the duration of the test.



- System status will be displayed when test is complete.

- If system **is** OK and vehicle has **less than 5000 miles** over all or since last oil service, **do not** replace N205 - Camshaft adjustment valve 1. Clear fault codes, and perform road test to verify repair.
- If system **is** OK and has **greater than 5000 miles** over all or since last oil service, **do not** replace N205 - Camshaft adjustment valve 1. Clear fault codes, change engine oil and filter, and perform road test to verify repair.
- If **faults return**, this technical bulletin does not apply. Continue Guided Fault Finding based diagnosis.
- If system **is not** OK, this technical bulletin does not apply. Continue Guided Fault Finding based diagnosis.



Technical Bulletin

Warranty

To determine if this procedure is covered under Warranty, always refer to the Warranty Policies and Procedures Manual ¹⁾					
Model(s)	Year(s)	Eng. Code(s)	Trans. Code(s)	VIN Range From	VIN Range To
Jetta Sedan, Jetta SportWagen, Jetta Wagon, Golf Wagon, Rabbit, Golf	2009-2013	2.5L (CBTA, CBUA)	5 spd Manual (MQ250) 6 spd Automatic (AQ250)	All	All
Passat, Beetle, Beetle Convertible	2012-2013	2.5L (CBTA, CBUA)	5 spd Manual (MQ250) 6 spd Automatic (AQ250)	All	All
SAGA Coding					
Claim Type:	Use applicable Claim Type ¹⁾				
Service Number:	Damage Code	HST	Damage Location (Depends on Service No.)		
1584	0010	--	Use applicable when indicated in ElsaWeb (L/R)		
Parts Manufacturer	Golf, Rabbit				WWO ²⁾
	Jetta, Jetta SportWagen, Jetta Wagon, Golf Wagon, Beetle, Beetle Convertible				3ME ²⁾
	Passat				TX6 ²⁾
Labor Operation ³⁾ : Oil/Filter Change			17305599 = 50 TU		
Participating Dealers – Oil Program					
Regular Material: Synthetic oil part number G 052167S0, Qty. of 63			See ServiceNet: SAGA Job Aids “Oil Part Pricing for SAGA Reimbursement”		
Non-Participating Dealers – Oil Program					
Outside Material: Synthetic oil part number – SYNGOIL Qty. of 63			See ServiceNet: SAGA Job Aids “Oil Part Pricing for SAGA Reimbursement”		



Technical Bulletin

Causal: Select labor operation		17305599
Diagnostic Time ⁴⁾		
GFF Time expenditure	01500000 = 25 TU max.	YES
Road Test	01210004 = 10 TU	YES
Technical Diagnosis	01320000 = 00 TU max.	NO
Claim Comment: Input "As per Technical Bulletin 2032173" in comment section of Warranty Claim.		
<p>1) Vehicle may be outside any Warranty in which case this Technical Bulletin is informational only</p> <p>2) Code per warranty vendor code policy.</p> <p>3) Labor Time Units (TUs) are subject to change with ELSA updates.</p> <p>4) Documentation required per Warranty Policy Procedures Manual.</p>		

Required Parts and Tools

Part Description	Part No:	Quantity
Oil Filter	06D 115 562	1
Participating Dealers – Oil Program		
Oil, Synthetic	G 052167S0	6.3 Quarts
Non-Participating Dealers – Oil Program		
Oil, Synthetic	SYNGOIL	6.3 Quarts

Tool Description	Tool No:
Midtronics Battery Tester/Charger	InCharge 940 (INC-940)
VAS Diagnostic Tool	VAS-PC, 5051B, 5052A, 6150X (Base CD V19.01.00 and Brand DVD V19.18.00 or higher)



Technical Bulletin

Additional Information

All part and service references provided in this Technical Bulletin are subject to change and/or removal. Always check with your Parts Dept. and Repair Manuals for the latest information.