

ATTENTION:

GENERAL MANAGER ☐
 PARTS MANAGER ☐
 CLAIMS PERSONNEL ☐
 SERVICE MANAGER ☐

IMPORTANT - All
 Service Personnel
 Should Read and
 Initial in the boxes
 provided, right.


SUBARU

QUALITY DRIVEN® SERVICE

SERVICE BULLETIN

APPLICABILITY: 2013MY and Later Outback Models

NUMBER: 05-55-13

SUBJECT: Tire and Tread Pattern Change

DATE: 08/19/13

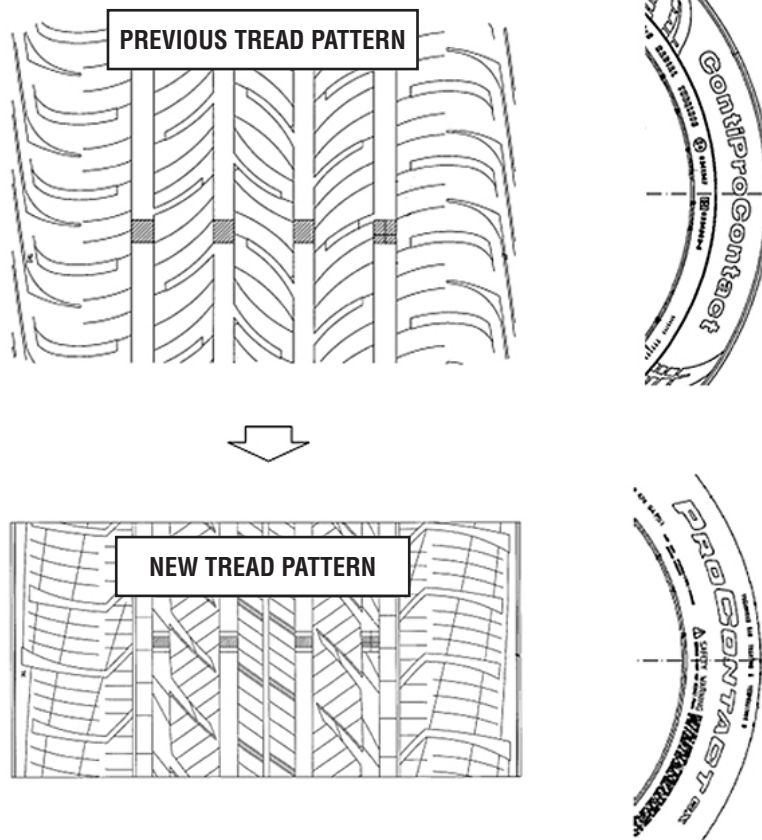
INTRODUCTION

This bulletin provides information regarding a running change to the tires being used in production on 2013MY and later Outback. The illustrations below are provided for reference.

COUNTERMEASURE IN PRODUCTION

The new tires were incorporated into production 1/21/2013 starting with VIN D2286883.

PART INFORMATION



REMINDER: As stated in the Owner's Manual: When replacing a tire, you must use a tire that is of the same size, circumference, construction, brand (tread pattern), speed symbol and load index as the original tires listed on the tire placard.

**CAUTION: VEHICLE SERVICING PERFORMED BY UNTRAINED PERSONS COULD
 RESULT IN SERIOUS INJURY TO THOSE PERSONS OR TO OTHERS.**

Subaru Service Bulletins are intended for use by professional technicians ONLY. They are written to inform those technicians of conditions that may occur in some vehicles, or to provide information that could assist in the proper servicing of the vehicle. Properly trained technicians have the equipment, tools, safety instructions, and know-how to do the job correctly and safely. If a condition is described, DO NOT assume that this Service Bulletin applies to your vehicle, or that your vehicle will have that condition.

**SUBARU OF AMERICA, INC. IS
 "ISO 14001 COMPLIANT"**

The international standard for excellence in Environmental Management Systems. Please recycle or dispose of automotive products in a manner that is friendly to our environment and in accordance with all local, state and federal laws and regulations.