



Service Bulletin

File in Section: -

Bulletin No.: PIC5836B

Date: December, 2013

PRELIMINARY INFORMATION

Subject: Rattle Or Buzz Noise From Rear Speaker Or Speakers Worse With High Bass Levels

Models: 2013 Cadillac ATS

This PI was superseded to update recommended field. Please discard PIC5836A.

The following diagnosis might be helpful if the vehicle exhibits the symptom(s) described in this PI.

Condition/Concern

Some customers may comment on a rattle or buzz noise from the rear speakers. The noise may be more easily duplicated with the Bass set to higher levels.

The rear speaker(s) generally is NOT the cause of this issue. Possible causes include:

1. Improper speaker mounting or loose trim, wiring harnesses, or other parts may cause an audible buzz or distortion.
2. Rattle or buzz from the OnStar module.
3. Seat belt retractor buzz - center seat belt retractor bolt may be contacting decklid torque rod inside trunk causing metallic rattle.
4. Child tether cover may be loose in package shelf trim.
5. Package shelf trim and / or trunk upper trim plastic Christmas tree fasteners may buzz to shelf at attachment holes.
6. Leading edge of package shelf, behind rear seat back.
7. Package shelf "J" hooks loose.

Recommendation/Instructions

The EL-50334-6 Audio System Diagnostic CD contains audio tracks that can be used to duplicate and isolate such concerns. Tracks 11 and 12 contain audio sweep tones for testing for speaker and grill rattles.

1. Inspect the rear speaker and the surrounding interior trim for proper and secure mounting. If the speaker trim has come loose, replace the speaker. If surrounding interior trim is found to be loose or improperly secured, correctly secure the item and add foam to insulate items as needed. Add foam to the subwoofer speaker connector to prevent contact to the under shelf trim from making contact. Use 1/2" by 5/16" of Kent Adhesive Backed Shim Stock (foam) p/n P40125 or equivalent.



3627512



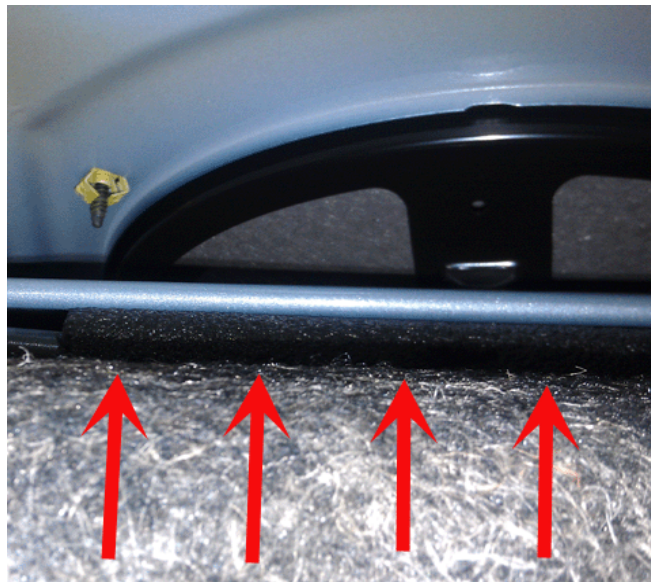
3632284

2. OnStar module - place 1/4" foam pad underneath the module (if foam is not currently in place). Use (4) 1" x 6"x 5/16" thick strips of Kent Adhesive Backed Shim Stock (foam) p/n P46510 or equivalent. Note: Do not apply foam the beyond the base of the module, avoid adding the foam in the area of the mounting flanges.

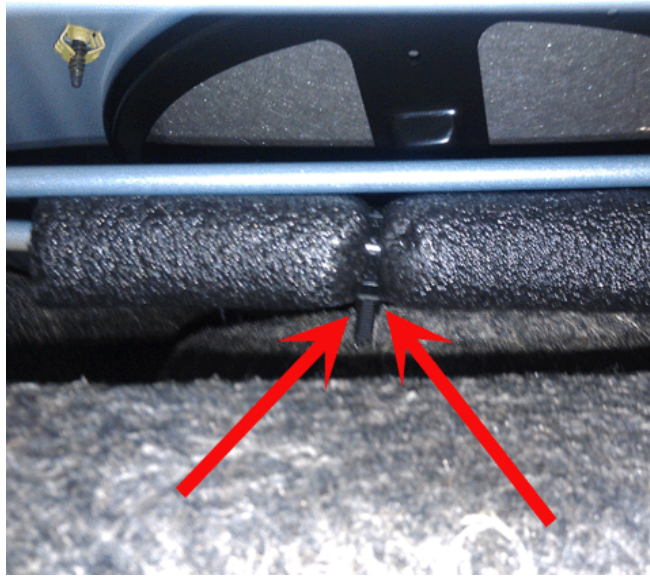


3627511

3. Seat belt retractor buzz - Ensure the existing foam torsion spring cover is centered on the deck lid torque rods. Use a zip tie to secure. Add a piece of 3/8" rubber hose (fuel line) to the center belt rear mounting bolt. See pictures below. Note hose on seat belt bolt left side behind torsion spring.



3627504

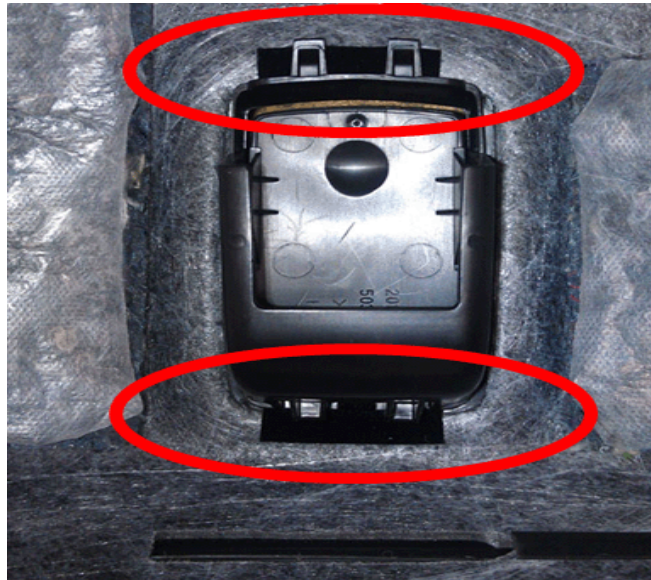


3627505



3629698

4. Add felt onto the package shelf trim opening to prevent movement between the trim and the child seat tether cover if the felt is not present. Use Kent Adhesive Backed Flocking Tape p/n KT13295 or equivalent see pictures below.

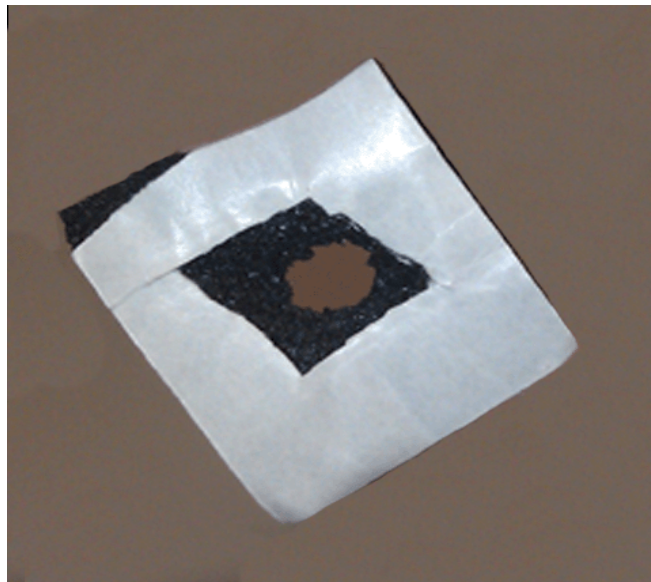


3630391

5. Add foam grommets onto each of the Christmas tree fasteners (if not present) prior to reinstalling back into the package shelf sheet metal holes. Use 1" X 1" block of Kent Adhesive Backed Shim Stock p/n P46510 or equivalent to create a foam washer(s) as needed. Fold the 1" x1" block over from corner to corner and carefully cut a hole in the center of the block to create a washer/spacer, see pictures below.

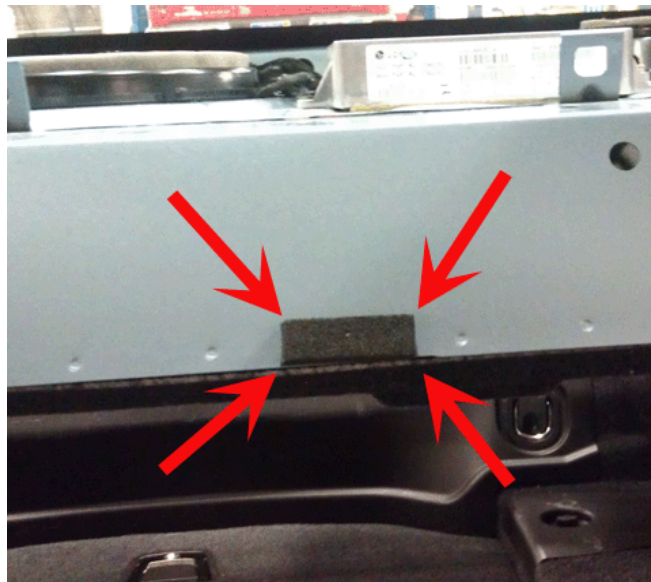


3627502



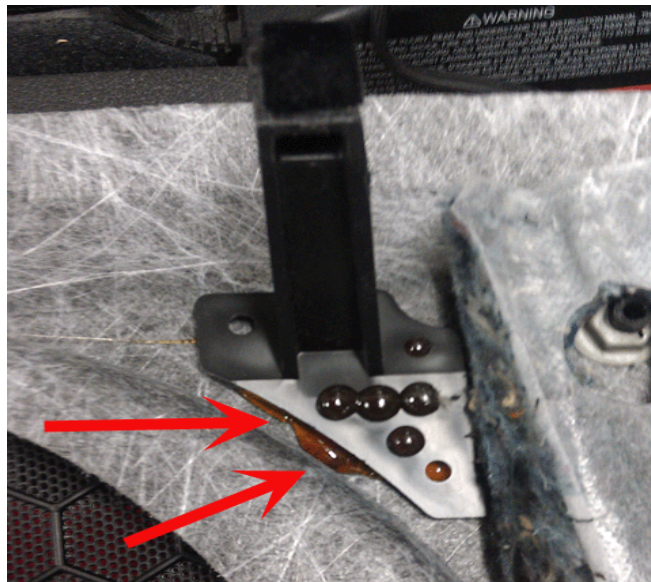
3627503

6. Add two $\frac{3}{4}$ " by $1\frac{1}{2}$ " long by $\frac{7}{16}$ " thick of Kent Adhesive Backed Shim Stock (foam) p/n P46505 or equivalent centered between the retaining clips on the leading edge of the package shelf (behind/under the rear seat back) see picture below.



3627506

7. Check the "J" hooks of the package shelf cover/trim for being secure. See picture below. Use hot glue to resecure the "J" hooks as needed.



3627509

Warranty Information

The correction for this concern may be one of several repairs described above. For vehicles repaired under warranty, please use the appropriate warranty labor operation based on the actual cause and repair.

Labor Operation	Description	Labor Time
3480038*	Audio System Diagnostics Using EL-50334-6 Audio System Diagnostic CD	0.2 hr
Add	To Remove Rear Package Shelf Trim	1.2 hr
Add	Add Foam to Rear Speaker and/or Surrounding Trim (After Rear Shelf Trim Removed)	0.2 hr
Add	Install Foam Pad Underneath the Onstar Module (After Rear Shelf Trim Removed)	0.2 hr
Add	Add Foam Grommets Onto Each of the Christmas Trees For the Rear Package Shelf (After Rear Shelf Trim Removed)	0.2 hr
Add	Add Felt Onto the Package Shelf Trim Opening	0.2 hr
Add	Add Rubber Hose to End of Bolt	0.1 hr

* This is an unique labor operation for bulletin use only. This will not be published in the Labor Time Guide.

Please follow this diagnostic or repair process thoroughly and complete each step. If the condition exhibited is resolved without completing every step, the remaining steps do not need to be performed.