

## Roof alignment stowed F-Type.pdf

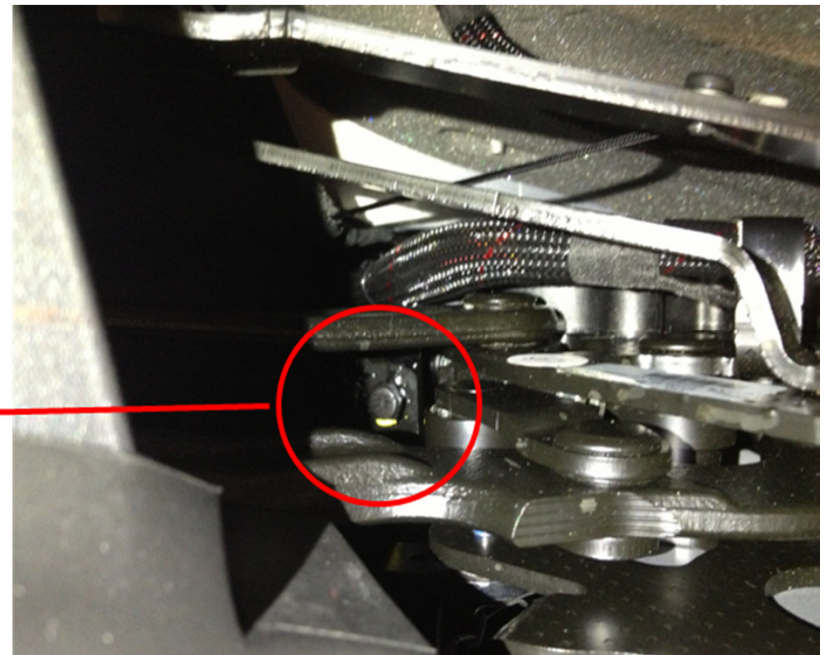
Reference	SSM66797
Models	F-TYPE / X152
Title	When Hood Stowed - Contact / Rubbing Against Hood Flaps
Category	Body
Last modified	04-Jul-2013 00:00:00
Symptom	105000 Roof Options
Content	<p><u>Issue:</u> When convertible hood is in the Stowed Position contact and or rubbing noticed against the hood cover side flaps.</p> <p><u>Cause:</u> Alignment of hood incorrect.</p> <p><u>Action:</u> Should this condition be noted please carry out the following adjustment;-</p> <ol style="list-style-type: none"> <li>1) Assess the extent of the gap from the hood to the secondary hood flap in "Z" axis (vertical). It should be at least 2mm and even across the car, if not then follow this step repair. (Picture 1)</li> <li>2) Lift or lower hood halfway up ensuring that the hood flaps are fully raised (Picture 2)</li> <li>3) Locate the downstop (see fleck of yellow paint) and use an 11mm socket and extension. When turned clockwise this lowers the hood and anti clockwise raises the hood. (Picture 2)</li> <li>4) Any adjustment should be made in half turn increments in either direction up to a maximum of 2 turns until an even gap side to side exists. (Picture 3)</li> <li>5) Re assess the extent of the gap to the flaps ensuring the gap from hood to secondary hood flap is even side to side and is at least 2mm in the "Z" axis (vertically). (Picture 4).</li> <li>6) When complete ensure that the hood can close and open fully with no issues.</li> </ol>

1

X



2



3





4

