



Service Bulletin

File in Section: -

Bulletin No.: PIC5894

Date: August, 2013

PRELIMINARY INFORMATION

Subject: Multiple IPC Warning Indicators DIC Messages Displayed And Or Loss Of Communication DTCs In Various Modules

Models: 2014 Chevrolet Impala

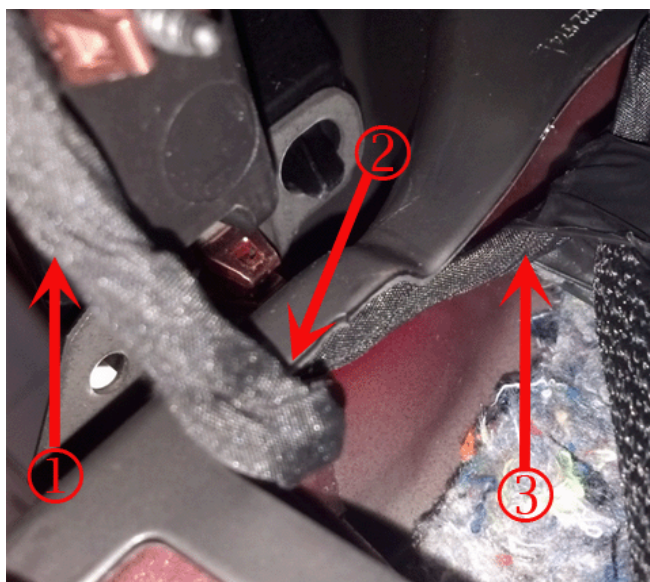
The following diagnosis might be helpful if the vehicle exhibits the symptom(s) described in this PI.

Condition/Concern

A Customer may comment that there are multiple IPC warning indicators on and/or warning messages being displayed on the DIC.

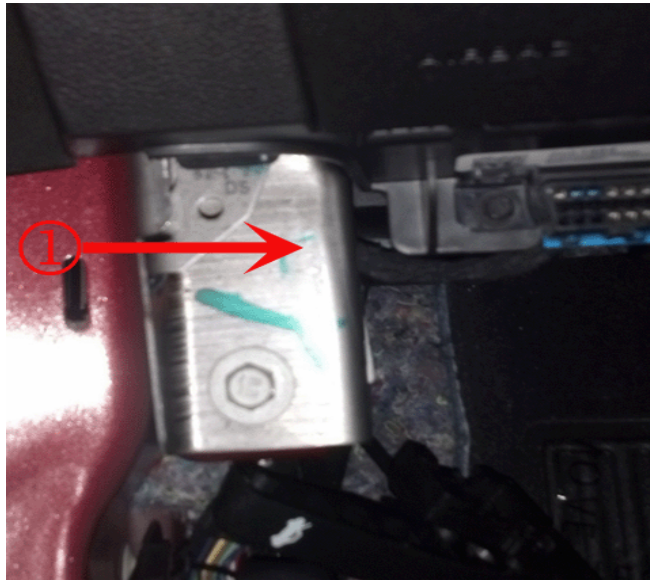
During initial scan for diagnostic codes you may find one or more of the following DTCs stored in various Modules: U0073, U0077, U0121, U0126, U0151, U0155, U0164, U0186, U0415, U0422, U0428.

These conditions can be caused by a pinched DLC branch in the IP Harness behind the IP Carrier.



1. To DLC
2. Location of Pinch
3. To BCM

3582171



3582174

1) Location of Pinched DLC branch directly behind IP Carrier

Recommendation/Instructions

If the DLC branch is found to be pinched it will be necessary loosen the Left Lower IP Carrier Bolt to free-up the harness and repair the wiring. Refer to Service Information for wiring repair information.

Warranty Information

For wiring repairs covered under warranty, please refer to latest version of bulletin 10-00-89-005 for warranty information on wire/connector repairs.

Please follow this diagnostic or repair process thoroughly and complete each step. If the condition exhibited is resolved without completing every step, the remaining steps do not need to be performed.