



NUMBER: 23-001-13

GROUP: Body

DATE: January 10, 2013

This bulletin is supplied as technical information only and is not an authorization for repair. No part of this publication may be reproduced, stored in a retrieval system, or transmitted, in any form or by any means, electronic, mechanical, photocopying, or otherwise, without written permission of Chrysler Group LLC.

SUBJECT:

Soft Top Rear Window Zipper Will Not Disengage

OVERVIEW:

This bulletin involves removing the metal zipper stops from the end of the rear window zipper in order to adjust and realign the zipper tapes to eliminate zipper skips that can prevent the zipper from disengagement.

MODELS:

2007 - 2013

(JK)

Wrangler

NOTE: This bulletin applies to 2 and 4 door vehicles equipped with soft top only (sales codes AEM, GW8, GWK, VJK, VJO, VJX, MX4 or MX5).

SYMPTOM/CONDITION:

The metal separator pins at the end of the zipper can become misaligned if the pins were not aligned correctly during installation or if skips are present in zipper teeth. Zipper skips may also cause misalignment of the zipper tapes. When pin misalignment occurs the sliders cannot be moved into the correct position in order to properly disengage the zipper completely (Fig. 1).

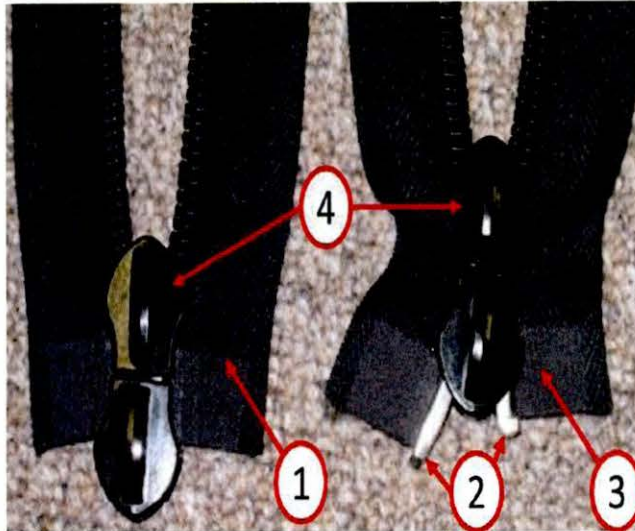


Fig. 1 Zipper Pin Misalignment

- 1 - Zipper Tapes Aligned Correctly
 - 2 - Metal Seperator Pins
 - 3 - Misaligned Zipper Tapes
 - 4 - Zipper Sliders
-

DIAGNOSIS:

Zipper skips may cause misalignment of the zipper tapes and make it difficult to disengage. If the customer describes the symptom, perform the Repair Procedure (Fig. 2).

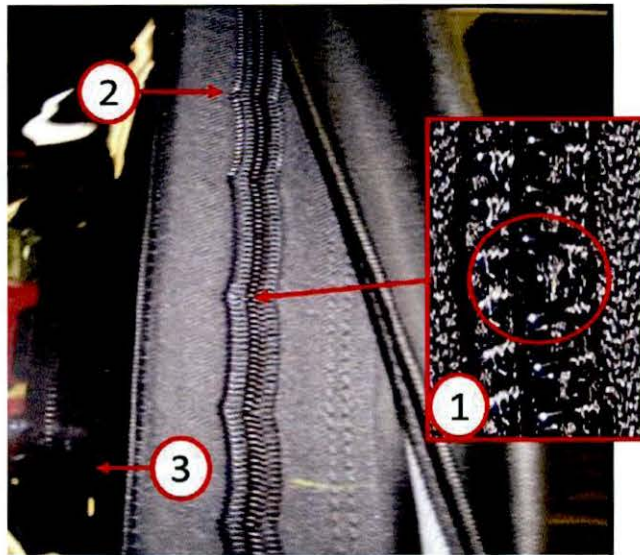


Fig. 2 Zipper Skip Condition

- 1 - Zipper Tooth Skip
- 2 - Zipper Tape Misalignment
- 3 - Soft Top Rear Window

PARTS REQUIRED:

Qty.	Part No.	Description
1	68202658AA	Zipper Repair Kit

SPECIAL TOOLS/EQUIPMENT REQUIRED:

NPN	Needle Nose Pliers
NPN	Diagonal Cutters

REPAIR PROCEDURE:

1. Using diagonal cutters or a similar tool, bend open each zipper end stop and pry it off of the zipper stringers/tapes, being careful not to damage the zipper teeth (Fig. 3).

NOTE: Proceed to the next stringer until both zipper end stops are removed.

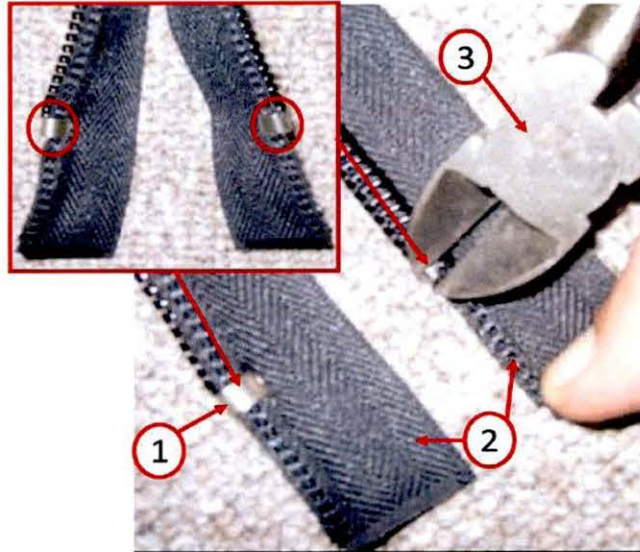


Fig. 3 Zipper Stop Removal

- 1 - Zipper Stop
 - 2 - Zipper Tape
 - 3 - Diagonal Cutters
-

2. Once the stops have been removed from each stringer/tape move both sliders into position and using needle nose pliers or a similar tool to press the doubled over stringer/tape fabric, slide each one individually off the end of the zipper where the zipper end stops were removed (Fig. 4).

NOTE: Note, the arrangement of the each slider in relation to the other. The sliders will need to be replaced in the same arrangement in order for the zipper to properly function.

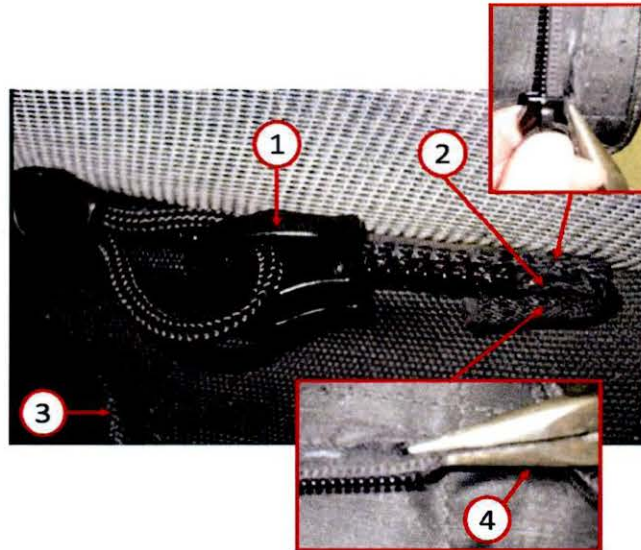


Fig. 4 Zipper Slider Removal

- 1 - Zipper Slider
 - 2 - Zipper Tape Fabric End
 - 3 - Soft Top Fabric
 - 4 - Needle Nose Pliers
-

NOTE: For further instruction on how to remove and install soft top rear window refer to the detailed procedures available in DealerConnect>TechCONNECT> under: Owner Manuals> Jeep Wrangler> UNDERSTANDING THE FEATURES OF YOUR VEHICLE> SOFT TOP — TWO-DOOR/FOUR-DOOR MODELS.

3. Now that the two zipper stringers/tapes are completely separated, reinstall the sliders by sliding each one individually onto the stringer/tape of the rear window and slide towards the left side of the vehicle (Fig. 5).

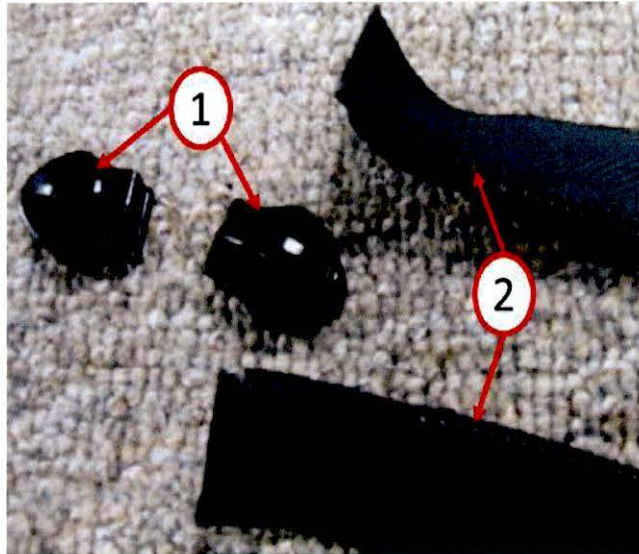


Fig. 5 Zipper Slider Installation

1 - Zipper Sliders

2 - Zipper Tape

4. Reinstall the zipper end stop on each stringer/tape (Fig. 6).

NOTE: The zipper end stops are to be placed immediately after the last tooth on each stringer/tape and not around the zipper teeth. Crimp the stops in place around the bead on each stringer/tape with suitable pliers. Apply enough pressure to the zipper end stops to assure the proper grip without flattening the stop.

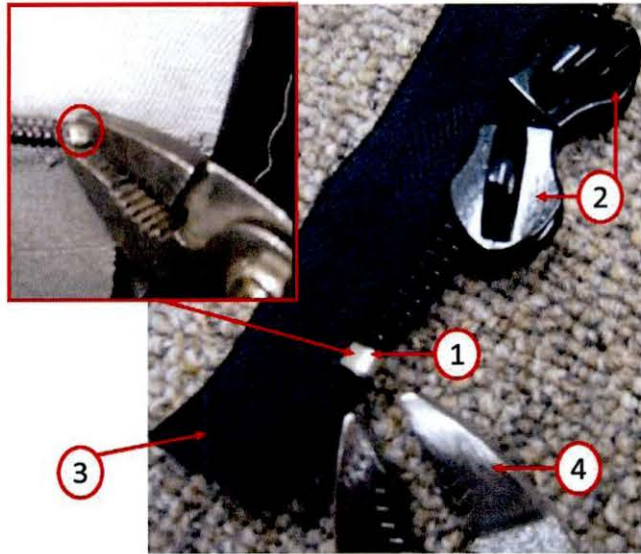


Fig. 6 Zipper Stop Installation

- 1 - Zipper Stop
- 2 - Zipper Sliders
- 3 - Zipper Tape
- 4 - Pliers

-
5. Move both sliders toward the metal separator pins and reinstall the soft top rear window back on the vehicle.

NOTE: For further instruction on how to remove and install soft top rear window refer to the detailed procedures available in DealerConnect>TechCONNECT> under: Owner Manuals> Jeep Wrangler> UNDERSTANDING THE FEATURES OF YOUR VEHICLE> SOFT TOP — TWO-DOOR/FOUR-DOOR MODELS.

POLICY:

Reimbursable within the provisions of the warranty.

TIME ALLOWANCE:

Labor Operation No:	Description	Amount
23-30-38-93	Remove and Install Zipper Stops to Soft Top Rear Window Zipper (Skill Level = Semi-Skilled, Training Level = 1)	0.2 Hrs.

FAILURE CODE:

ZZ	Service Action
----	----------------