



Service Bulletin

File in Section: -

Bulletin No.: PIP5142

Date: September, 2013

PRELIMINARY INFORMATION

Subject: 2014 Corvette Rear Axle Restriction

Models: 2014 Chevrolet Corvette

The following diagnosis might be helpful if the vehicle exhibits the symptom(s) described in this PI.

Condition/Concern

Product teams continually seek valuable information for engineering improvements. To assist in this effort, the 2014 Chevrolet Corvette rear axle exchange program will be administered by the GM Product Quality Center (PQC).

Dealerships are required to call the PQC, not GM Technical Assistance (TAC), to request an exchange.

The PQC may refer the dealer technician to TAC if additional diagnosis is required.

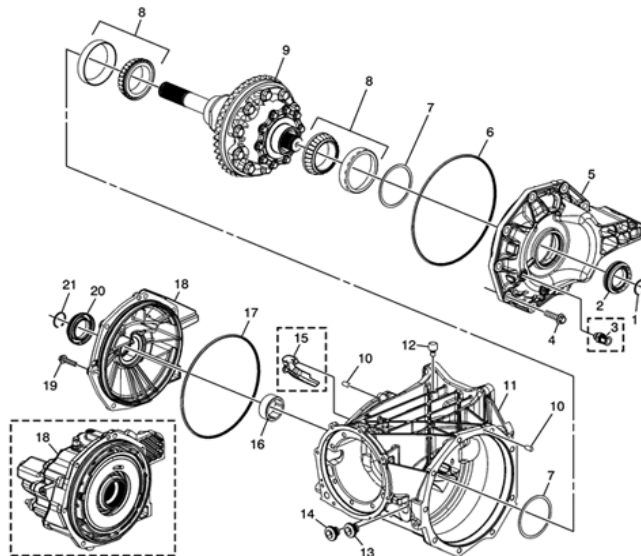
TAC will be available for product inquiries that do not require assembly replacement.

Recommendation/Instructions

The rear axle used in this vehicle is currently not internally serviceable and must be replaced as an assembly. This includes the electronic locker and the non-electronic locking differential.

DO NOT disassemble the unit to determine root cause or point of failure.

See the following picture and item numbers for a list of serviceable items. Also Viewable in SI Document ID: 3247753



3619926

Item reference number:

2 Rear Axle Shaft Seal (Right Side)

3 Differential (with Cooler Pump) Nut (3/8 Quick Connect) – Model Dependent P/N 19302213

12 Differential Carrier Vent

13 Rear Axle Housing Fill Plug

14 Rear Axle Housing Drain Plug

20 Rear Axle Shaft Seal (Left Side)

The following PQC restricted Rear Axle Part Numbers are involved in the 2014 Corvette (North America Only) Rear Axle Exchange.

- P/N 24255985 2.56 Ratio Std. Limited Slip Differential – Auto Trans
- P/N 24255988 3.42 Ratio ELSD W/Axle Cooler - Manual Trans
- P/N 24255986 2.73 Ratio ELSD W/Axle Cooler – Auto Trans
- P/N 24255987 3.42 Ratio Std. Limited Slip Differential - Manual Trans

Please have your answers to the following before you contact the PQC (not GM Technical Assistance (TAC)) to request a 2014 Corvette Rear Axle Exchange.

Caller's First & Last Name/Position:

Parts Manager's Name:

Technician's Direct Phone:

Dealership's Fax Number:

Parts Dept Fax Number:

Q1: Customer Concern:

Q2: Has the vehicle been modified with non-production accessories?

Q3: Is the vehicle for personal or commercial use?

Q4: Describe the failure of the axle:

Q5: The Serial Number (located on label) of the Failed Axle:

[Label is located on the right rear of the differential.]



3617305

Q6: Replacement Cost = \$

Requested Labor Time:

Q7: Does the vehicle have any DTCs in the ECM/TCM/BCM?

[Note: GDS must be launched from TIS to make sure all the data is captured and can be retrieved.]

Q8: Leaks

- Any leaks?
- What type of leak?
- Where is the leak located?

Q9: Noise

- Any noise?
- What kind of noise?
- Where is it?

- How frequent is the noise?
- When does it occur?
- How long does it last?
- At what temperature does it occur?

Warranty Information

For vehicles repaired under warranty use:

Labor Operation	Description	Labor Time
3032360	Differential Replacement	Use Published Labor Operation Time

Please follow this diagnostic or repair process thoroughly and complete each step. If the condition exhibited is resolved without completing every step, the remaining steps do not need to be performed.