



Connection offline

Technical product information

Topic	Rear door blind fails to deploy – Outer frame finisher baulking
Market area	Worldwide Bentley (1WBE)
Brand	Bentley
Transaction No.	2035539/1
Level	EH
Status	Approval
Release date	

New customer code

Object of complaint	Complaint type	Position
Body fixtures and fittings -> Sunblind operation -> Electrically raise side glass blind	functionality -> without function / defect	

New workshop code

Object of complaint	Complaint type	Position
Body fixtures and fittings -> Trim, protective strips, brightware, dirt deflector -> Trim strip for door window frame	dimensional accuracy -> incorrect gap width	rear left
Body fixtures and fittings -> Trim, protective strips, brightware, dirt deflector -> Trim strip for door window frame	dimensional accuracy -> incorrect gap width	rear right

Vehicle data

Flying Spur

Sales types

Type	MY	Brand	Designation	Engine code	Gearbox code	Final drive code
4W21*	2014	E		*	*	*

Chassis numbers

Manufacturer	Filler	Type	Filler	MY	Factory	From	To	Prod from	Prod to
SCB	***	**	*	E	C	084021	089762		

Documents

Document name
master.xml
master.doc

 Connection offline

Technical product information

Transaction No.: 2035539/1

Rear door blind fails to deploy – Outer frame finisher baulking

Customer statement / workshop findings

Rear door blind fails to deploy

Technical background

The outer frame finisher can become dislodged, assuming a position that partially covers the channel from which the rear door blind deploys. When this is the case the blind will be baulked and not deploy. A revised outer frame finisher is available for fitment on occurrence of this failure. When this failure occurs carry out the following procedure on both rear doors.

Production change

A revised outer frame finisher is now fitted

Measure

1.



In the event of a rear door blind failing to deploy check the position of the outer frame finisher, figure 1 shows the finisher in the fail position. If the finisher (A) has moved towards the rear blind deployment slot then push the outer frame finisher back to its design position line (B) and re test the rear door blind function (see Figure 1). If the blind subsequently works then carry out the following procedure to fit the latest revised outer frame finisher which will ensure the finisher maintains its design position. The procedure, if required on one rear door, should be performed on both rear doors.

Procedure

1. Remove the rear door trim panel. Refer to workshop manual "Rear door inner trim panel – To remove and fit" Rep. Gr.70



Figure 2

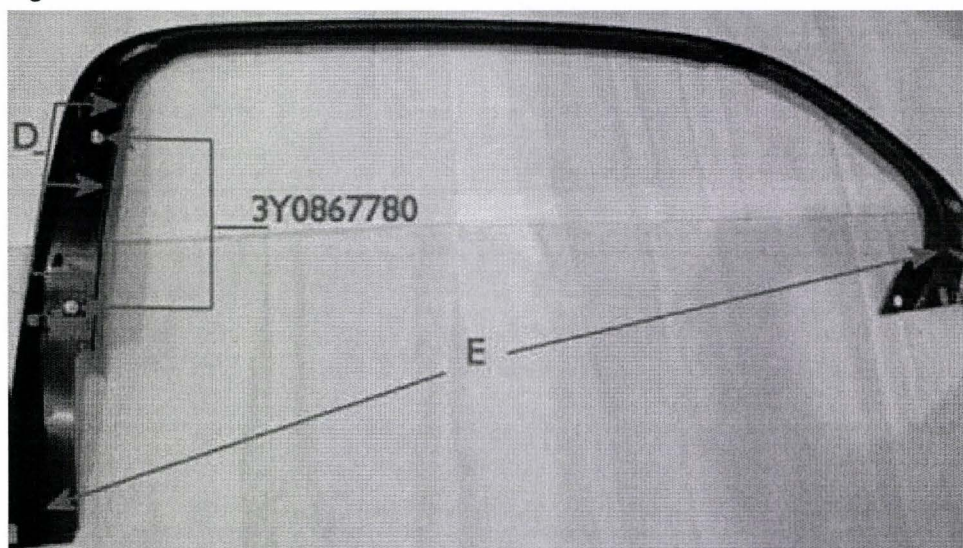


Figure 2a

2. Remove inner frame finisher (see Figure 2). This finisher is retained by two clips (part number 3Y0867780) and three integral lip bars (D) that engage in the door frame. Adhesive tape may also be used at various positions (E) around its periphery (see Figure 2a). Dexterous use of trim tool and spatula at the securing points shown in figure 2a will release this trim part

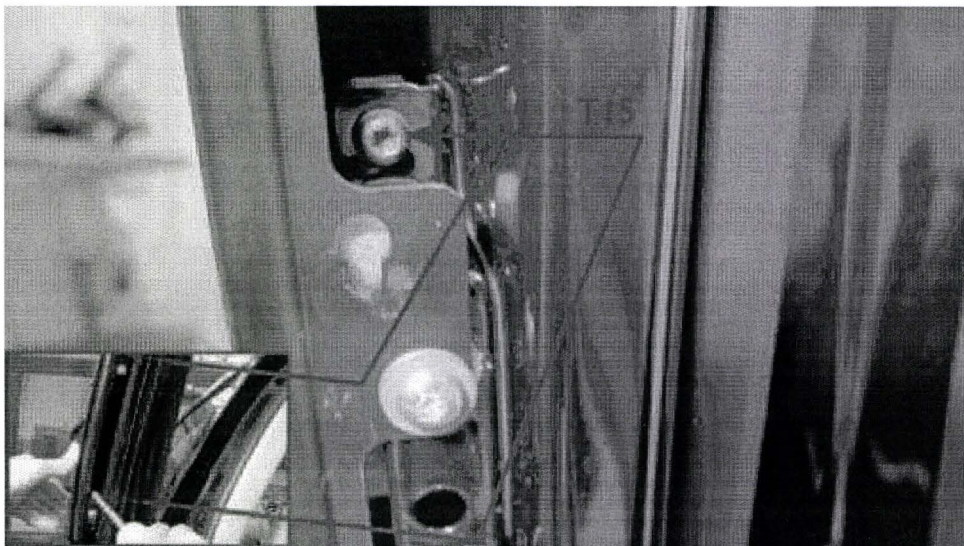


Figure 3

3. Remove the two T15 fasteners securing the outer frame finisher, remove and discard the outer frame finisher (see Figure 3)



Figure 4

4. Position the new outer frame finisher (part number 4W0854909B) (see Figure 4). When fitting the outer frame finisher ensure it engages in the shallow recess at the side of the flocked seal (see inset Figure 4)

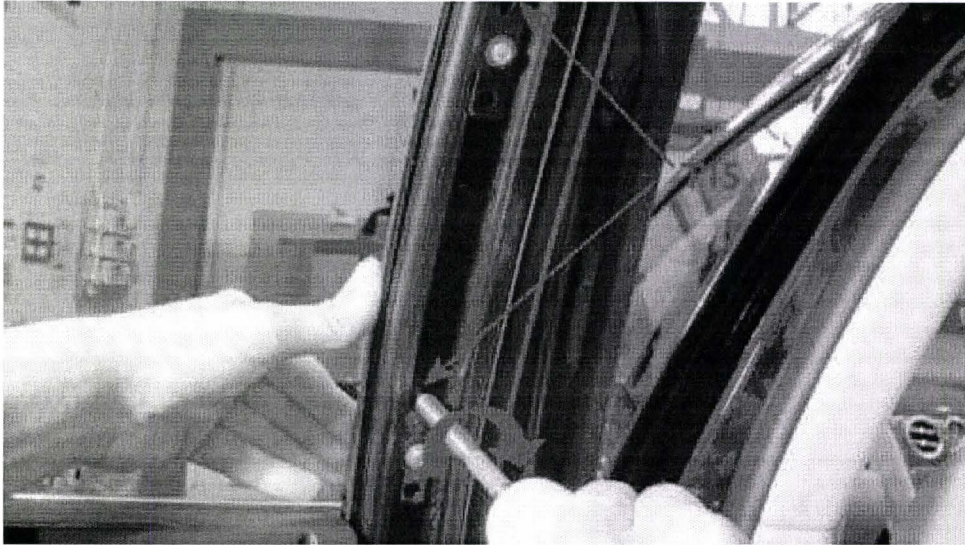


Figure 5

5. Secure the outer frame finisher with the two T15 fasteners, whilst tightening the fasteners gently push the finisher towards the door frame to ensure correct engagement in the seal (see Figure 5)
6. Refit the inner frame finisher (see Figure 2), Using two new clips (part number 3Y0867780)
7. Refit the rear door trim panel. Refer to workshop manual "Rear door inner trim panel – To remove and fit" Rep. Gr.7

Warranty accounting instructions

For one door

Warranty Type	110 or 910
Labour Operation Code	64 44 19 06
Damage Service Number	64 65
Damage Code	0100
Location	001 or 002
Time	40 TU

For two doors

Warranty Type	110 or 910
Labour Operation Code	64 44 20 06
Damage Service Number	64 65
Damage Code	0100
Location	001
Time	80 TU

Parts information

New part number	Description	Displaced part number	Quantity
4W0854909B	outer frame finisher left	4W0854909A	1
4W0854910B	outer frame finisher right	4W0854910A	1
3Y0867780	Clip (white)		4