

Subject

EV Battery Service Plug - Installation/Removal

Instructions

Market

USA

Service Category

Engine/Hybrid System

Section

Hybrid/Battery Control System

Applicability

RAV4 EV

APPLICABLE VEHICLES

2012-2013

RAV4 EV

CONDITION

Below are step-by-step instructions on how to remove and install the Service Plug.

NOTE: If these steps are not followed, it's possible to damage the Service Plug installation/removal mechanism.

WARNING: Make sure that the locking lever is vertically positioned before reinstalling the Plug.

RECOMMENDATIONS

Please refer to the Toyota RAV4 EV Repair Manual section for precautions when working on high voltage components/systems. Links to the Repair Manual are located at the end of this document.

2012 RAV4 EV (RM19Q0U):

Engine/Hybrid System\HYBRID / BATTERY CONTROL\HYBRID CONTROL SYSTEM\PRECAUTION (2012 RAV4 EV): HYBRID / BATTERY CONTROL: HYBRID CONTROL SYSTEM

2013 RAV4 EV (RM2510U):

Engine/Hybrid System\HYBRID / BATTERY CONTROL\HYBRID CONTROL SYSTEM\PRECAUTION; 2013 MY RAV4 EV [12/2012 -]

Some of the information from the Repair Manual is repeated below for quick reference:

PRECAUTION

1. PRECAUTIONS FOR INSPECTING ELECTRIC VEHICLE CONTROL SYSTEM

- (a) Before inspecting the high-voltage system or disconnecting the low voltage connector of the electric vehicle traction motor assembly (inverter), DC/DC converter assembly, electric vehicle battery assembly or electric vehicle charger assembly, take safety precautions such as wearing insulated gloves and protective goggles, and removing the service plug grip to prevent electrical shocks. After removing the service plug grip, attach a note to it to prevent other technicians from mistakenly reconnecting it while you are working on the high-voltage system.

Subject

Market

**EV Battery Service Plug - Installation/Removal
Instructions**

USA

Applicability

RAV4 EV

NOTICE:

- After turning the power switch off, waiting time may be required before disconnecting the cable from the negative (-) auxiliary battery terminal. Therefore, make sure to read the disconnecting the cable from the negative (-) auxiliary battery terminal notices before proceeding with work.
- After removing the service plug grip, turning the power switch on (READY) may cause a malfunction. Do not turn the power switch on (READY) unless instructed by the repair manual.

(b) After removing the service plug grip, wait for at least 10 minutes before touching any of the high-voltage connectors or terminals.

CAUTION:

Wear insulated gloves and protective goggles.

HINT:

Waiting for at least 10 minutes is required to discharge the high-voltage capacitor inside the electric vehicle traction motor assembly (inverter), DC/DC converter assembly, electric vehicle battery assembly and electric vehicle charger assembly.

Subject

**EV Battery Service Plug - Installation/Removal
Instructions**

Market

USA

Applicability

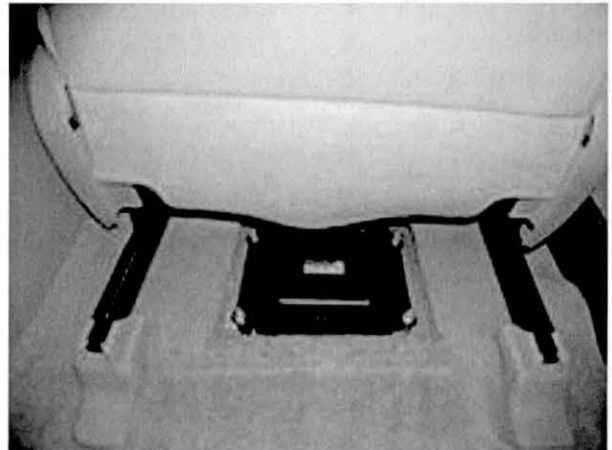
RAV4 EV

REMOVAL INSTRUCTIONS:

1. Fold back the carpet below the passenger seat (from the right rear floor).



2. Remove the 4 nuts (10 mm socket) and remove the cover over the EV Battery Service Plug.



Subject

EV Battery Service Plug - Installation/Removal Instructions

Market

USA

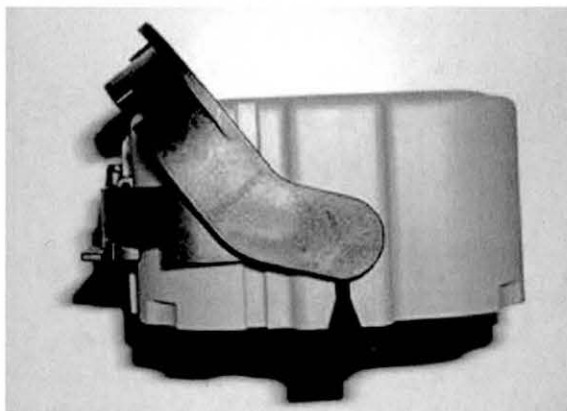
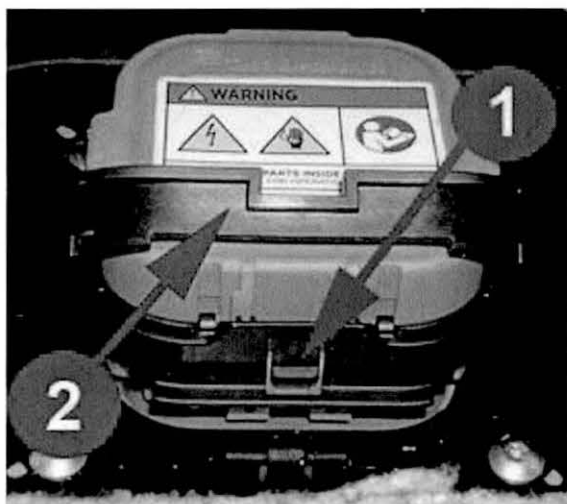
Applicability

RAV4 EV

3. To remove the Service Plug, first (1) press the inner release tab (see red arrow in picture). While holding the tab pressed with one hand, use the other hand to pull up (2) on the outer lever (see blue arrow).



4. After the outer lever is up approximately 45 degrees, (1) press the inner release tab (see red arrow in picture). While holding the tab pressed with one hand, use the other hand to pull up (2) on the outer lever (see blue arrow) until the outer lever is in the full up position (see second picture).



Subject

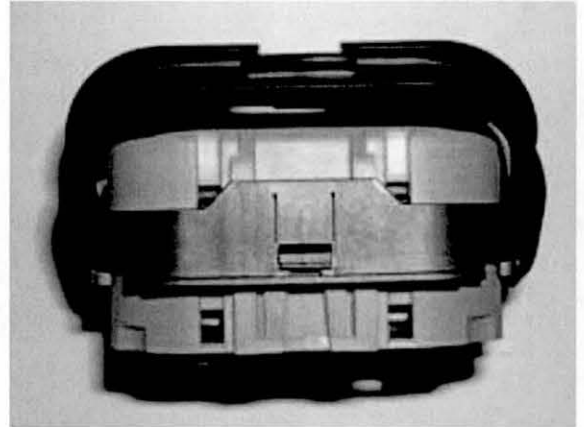
EV Battery Service Plug - Installation/Removal Instructions

Market

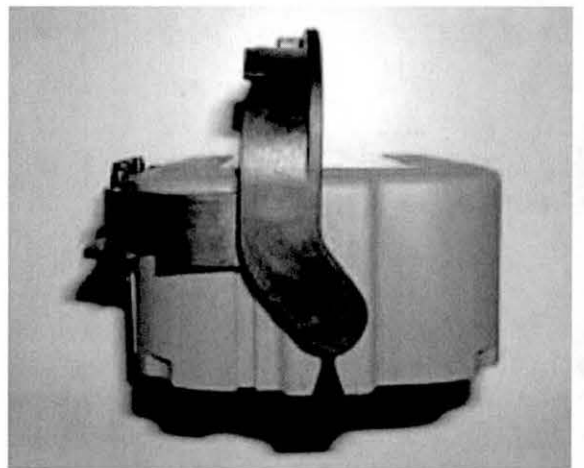
USA

Applicability

RAV4 EV



5. Pull straight up on the outer handle to remove the service plug.



Subject

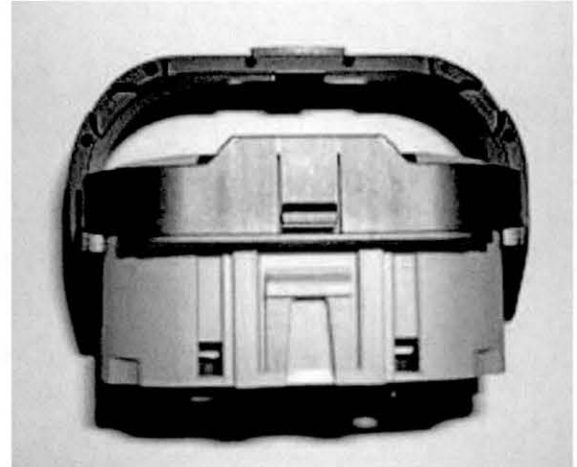
**EV Battery Service Plug - Installation/Removal
Instructions**

Market

USA

Applicability

RAV4 EV

**INSTALLATION INSTRUCTIONS:**

WARNING: Make sure that the locking lever is vertically positioned before reinstalling the Plug. If the locking lever is in the half-way open position (45 degrees) and the Service Plug is reinstalled in the vehicle, the vehicle may not READY-ON, because the Service Plug is not properly installed.

1. Fully seat the Service Plug in its mounting location (make sure that the locking lever is vertically positioned in its fully open position).
2. Push the locking lever down until it's fully seated in the horizontal position.

LINK REFERENCES

- [HYBRID / BATTERY CONTROL: HYBRID CONTROL SYSTEM: PRECAUTION \(2012 RAV4 EV\)](#)
- [HYBRID / BATTERY CONTROL: HYBRID CONTROL SYSTEM: PRECAUTION; 2013 MY RAV4 EV \[12/2012 - ???????\]](#)