

**NUMBER:** 06-001-13

**GROUP:** Clutch

**DATE:** July 30, 2013

*This bulletin is supplied as technical information only and is not an authorization for repair. No part of this publication may be reproduced, stored in a retrieval system, or transmitted, in any form or by any means, electronic, mechanical, photocopying, or otherwise, without written permission of Chrysler Group LLC.*

**SUBJECT:**

Squeak When Depressing The Clutch

**OVERVIEW:**

This bulletin involves lubricating the clutch pedal return spring stop.

**MODELS:**

2011 - 2013 JK Wrangler

**NOTE:** This bulletin applies to vehicles built on or before May 31, 2013 (MDH 0531XX) equipped with a manual transmission (Sales Code DEH).

**SYMPTOM/CONDITION:**

Squeak from under the dash when depressing or letting go of the clutch pedal.

**DIAGNOSIS:**

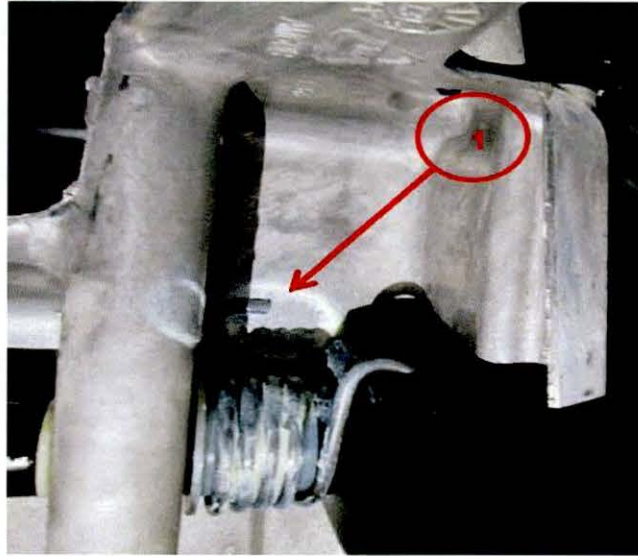
If the customer describes the symptom, perform the Repair Procedure.

**PARTS REQUIRED:**

Qty.	Part No.	Description
	04318066AC	Grease, Spray White Lube Lithium (Shop Supply)

**REPAIR PROCEDURE:**

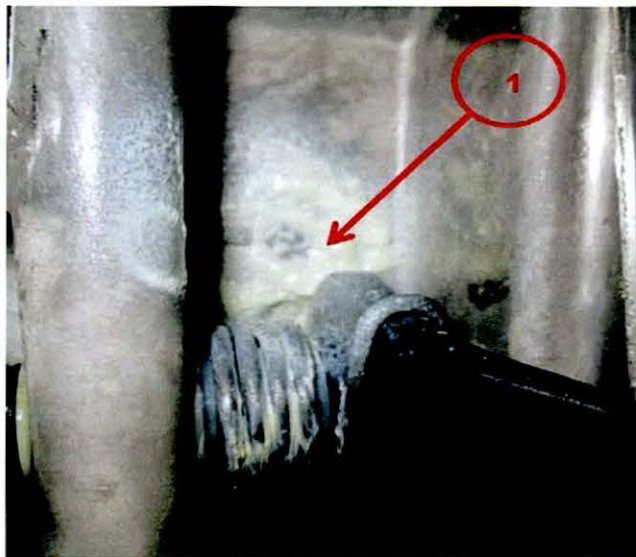
1. Apply a liberal amount of Spray White Lithium Lube (p/n 04318066AC) to the clutch pedal spring where the spring stop tab rests on the underside of the dash panel cross-car beam as shown in (Fig. 1) and (Fig. 2)



**Fig. 1 Clutch Pedal Return Spring**

1 - Clutch Pedal Return Spring Stop Tab

---



**Fig. 2 Apply Grease To Clutch Pedal Return Spring Stop**

1 - Apply a Liberal Amount of Grease to the Spring Tab Where it Touches Metal Cross-Car Beam

---

2. Depress the clutch pedal several times to work the lubricant into the spring stop.

**POLICY:**

Reimbursable within the provisions of the warranty.

**TIME ALLOWANCE:**

<b>Labor Operation No:</b>	<b>Description</b>	<b>Skill Category</b>	<b>Amount</b>
06-45-01-95	Pedal, Clutch - Lubricate Return Spring Tab Stop (0 - Low Skilled) <b>NOTE: WARRANTY REIMBURSEMENT FOR LABOR ONLY — SPRAY GREASE IS A SHOP SUPPLY.</b>	3 - Driveline	0.2 Hrs.

**FAILURE CODE:**

ZZ	Service Action
----	----------------