

Navigation System Firmware Improvement (Generation 5)

Service Category Audio/Visual/Telematics

Section Navigation/Multi Info Display

Market USA



Applicability

YEAR(S)	MODEL(S)	ADDITIONAL INFORMATION
2007 – 2009	LS460	
2008 – 2009	LS600H, LX570	

REVISION NOTICE

October 2, 2014 Rev1:

- Required Tools & Equipment and Update Procedure sections have been updated.

Any previous printed versions of this bulletin should be discarded.

SUPERSESSON NOTICE

The information contained in this bulletin supersedes SB No. L-SB-0067-09.

- The Required Tools & Equipment and Repair Procedure sections have been updated.

Service Bulletin No. L-SB-0067-09 is Obsolete and any printed versions should be discarded. Be sure to review the entire content of this bulletin before proceeding.

Introduction

During the map update procedure, the following conditions may occur:

- Navigation system may continuously reboot or become inoperative.
- Navigation system will reset to map update "I agree" screen.

Updated navigation system firmware has been developed to remedy this condition. This software MUST be installed into the vehicle before performing a map update using the Navigation Update Tool.

Navigation System Firmware Improvement (Generation 5)

Warranty Information

OP CODE	DESCRIPTION	TIME	OFF	T1	T2
EL9014	Navigation OS Update	0.2	86271-48040	87	74

APPLICABLE WARRANTY

- This repair is covered under the Lexus Comprehensive Warranty. This warranty is in effect for 48 months or 50,000 miles, whichever occurs first, from the vehicle's in-service date.
- Warranty application is limited to occurrence of the specified condition described in this bulletin.

NOTE

This should be a labor claim only since navigation software is downloaded from TIS.

Required Tools & Equipment

REQUIRED EQUIPMENT	QTY
PC with Windows® XP, Windows® 7, or Windows® 8 Operating System	1

SPECIAL SERVICE TOOLS (SST)	PART NUMBER	QTY
Navigation Update Tool Kit*	95079-00003-KIT	1
GR8 Battery Diagnostic Station*	00002-MCGR8	1

* Essential SST.

NOTE

Additional SSTs may be ordered by calling 1-800-933-8335.

Navigation System Firmware Improvement (Generation 5)

Update Procedure

Loading Navigation System Firmware onto Navigation Update Tool

NOTE

The Navigation Update Tool MUST have the latest "Navigation Programs Installer" before performing this bulletin. For installation procedure, refer to Service Bulletin No. [L-SB-0072-14](#), "HDD Navigation Program Setup."

1. Turn on PC.
2. Log into the Technical Information System (TIS).
3. Download the *Vehicle Navigation Software Update* from TIS.
 - A. Click on the *TIS* tab.
 - B. Click on the *Diagnostics* tab.
 - C. Click on the *Tools & Equipment* tab.
 - D. Click on the *Navigation* tab under Tools.
 - E. Click on the Generation 5 *Vehicle Navigation Software Update* under *Available Software Updates*.

NOTE

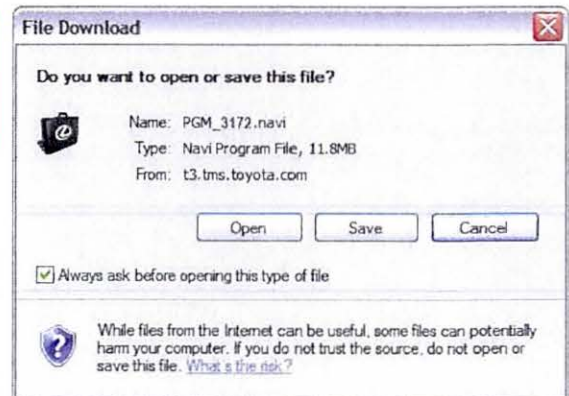
If the TIS division is NOT set to Lexus (under the *My Account* area), the *Navigation* tab will NOT display. Navigation Update is a Lexus ONLY TIS option at this time.

4. Click *Open* to begin the download.

NOTE

The file is large and may take up to 10 minutes to download.

Figure 1.



Navigation System Firmware Improvement (Generation 5)

Update Procedure

Loading Navigation System Firmware onto Navigation Update Tool (Continued)

5. Once the file is downloaded, prepare the vehicle for use with the Navigation Update Tool. Cover the GPS antenna in a manner where GPS satellite tracking is NOT present during the navigation software update process.

HINT

Park vehicle in a structure that blocks the GPS signal, or cover the GPS antenna with a metal panel.

6. Connect the Navigation Update Tool to the PC using the USB cable.
 - A. Make sure the USB cable is secured in **both** the PC and the Navigation Update Tool USB ports.
 - B. Confirm that the Navigation Update Tool is powered correctly.
 - C. Turn the power ON.
 - D. Click *Continue*.
7. Verify that both the transfer mode display light (green) and power supply display light (blue) are lit, then click *Continue*.

Figure 2.



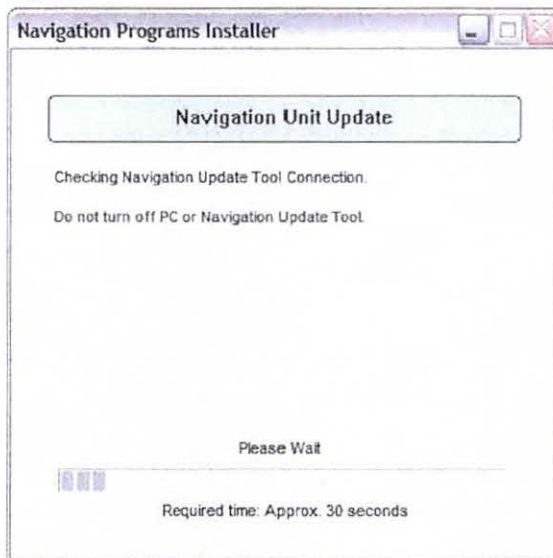
Navigation System Firmware Improvement (Generation 5)

Update Procedure

Loading Navigation System Firmware onto Navigation Update Tool (Continued)

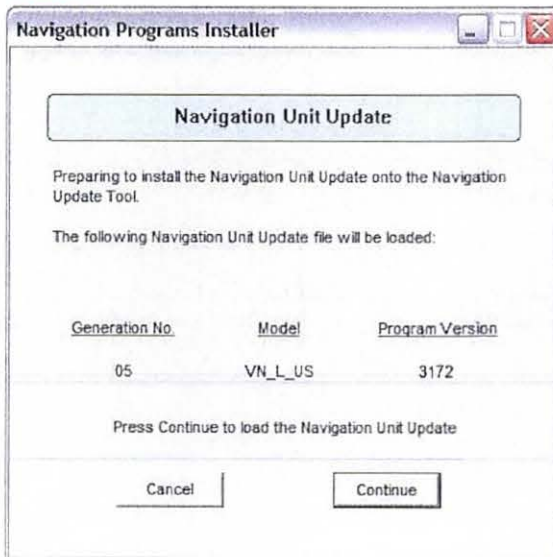
8. The software will perform a connection check with the Navigation Update Tool. In the event an error is shown, please recheck the USB connection.

Figure 3.



9. Navigation Firmware is ready to be loaded onto the Navigation Update Tool, click *Continue*.

Figure 4.



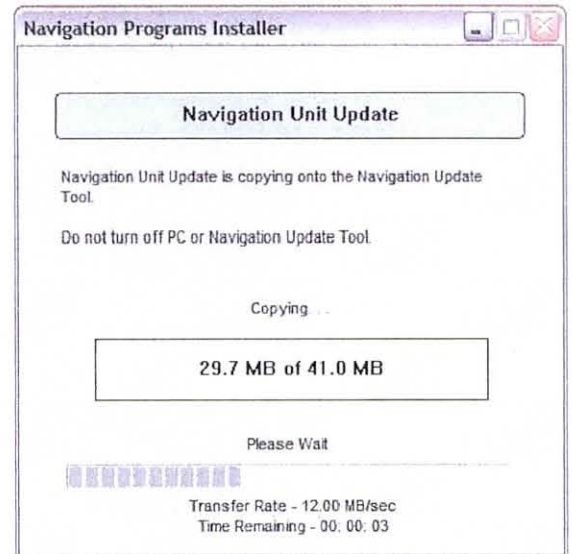
Navigation System Firmware Improvement (Generation 5)

Update Procedure

Loading Navigation System Firmware onto Navigation Update Tool (Continued)

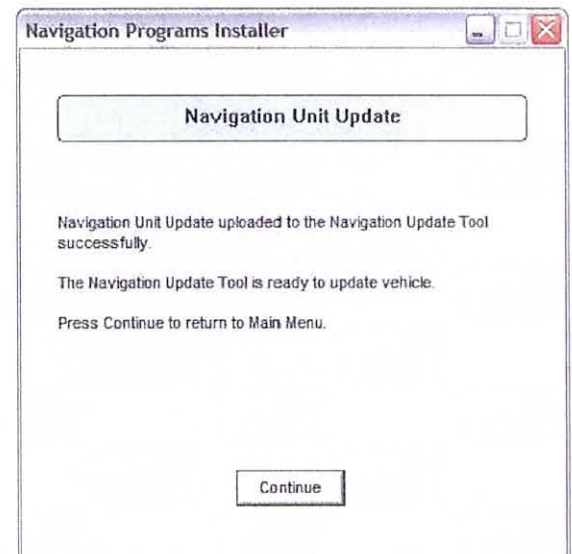
10. Navigation Firmware will now load onto the Navigation Update Tool.

Figure 5.



11. Once the Navigation Firmware is successfully loaded onto the Navigation Update Tool, click *Continue* to finish the installer.

Figure 6.



12. Disconnect the navigation tool from the PC.

Navigation System Firmware Improvement (Generation 5)

Update Procedure (Continued)

Loading Navigation System Firmware into the Lexus Navigation System

NOTE

Vehicle ignition should be OFF before starting this procedure.

1. Connect the Navigation Update Tool to the vehicle (tool MUST be disconnected from the PC).
2. Connect the GR8 Battery Diagnostic Station to the vehicle.
3. Press the "ENGINE START STOP" switch two times with the brake pedal released to cycle the ignition ON (Engine/Hybrid system OFF), and wait for the *Caution* screen to appear on the navigation display.
4. Press the *MAP* button, wait for the map to appear.
5. Hold down the *INFO* button and rotate the headlamp stalk switch ON and OFF 3 or more times until the navigation system enters the diagnostic mode.
6. Select *MENU* on the upper right side of the multi-display screen.
7. Select *Program Update*.

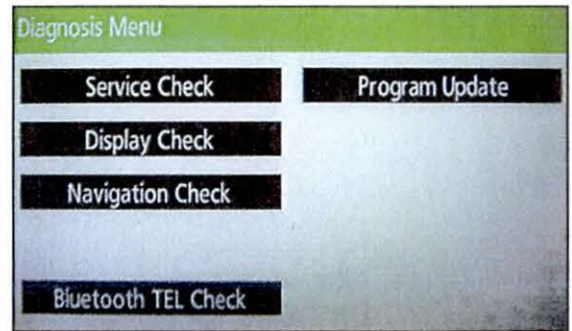
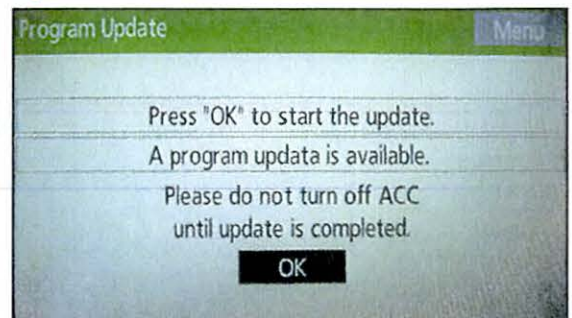


Figure 7.

8. Select *OK*.

NOTE

Load time for the program update is between 5 and 15 minutes.



Navigation System Firmware Improvement (Generation 5)

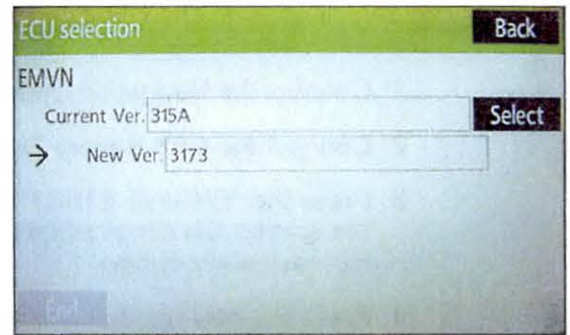
Update Procedure

Loading Navigation System Firmware into the Lexus Navigation System (Continued)

9. When the *ECU Selection* screen appears, confirm the current version is less than the NEW version. If yes, then press *Select*.

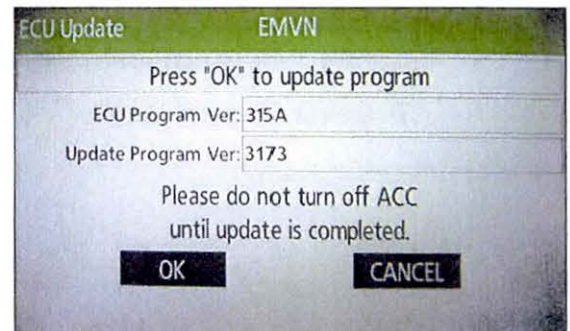
If the current version is greater than or equal to the new version, then the update is NOT applicable to this vehicle.

Figure 8.



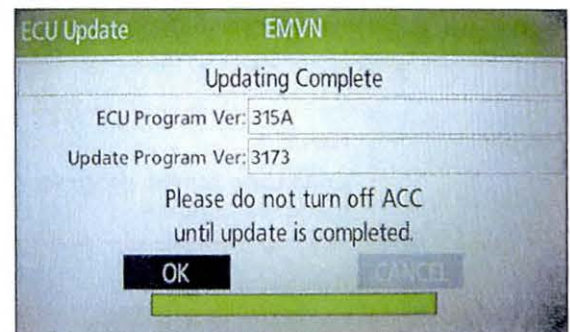
10. When the *EMVN* screen is shown, select *OK*.

Figure 9.



11. After about 1 minute, if the update was successful the display will indicate "*Updating Complete*" at the top of the screen. Select *OK* to continue.

Figure 10.



Navigation System Firmware Improvement (Generation 5)

Update Procedure

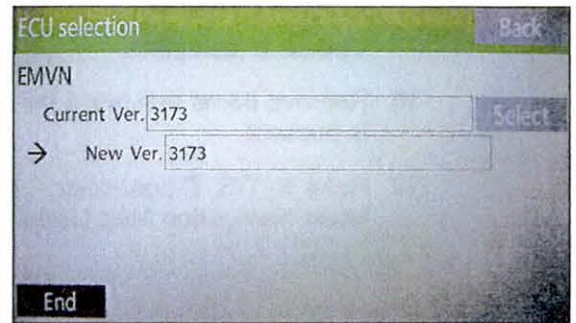
Loading Navigation System Firmware into the Lexus Navigation System (Continued)

- Confirm the Current Version reads "3173," then select *End* to complete the procedure.

NOTE

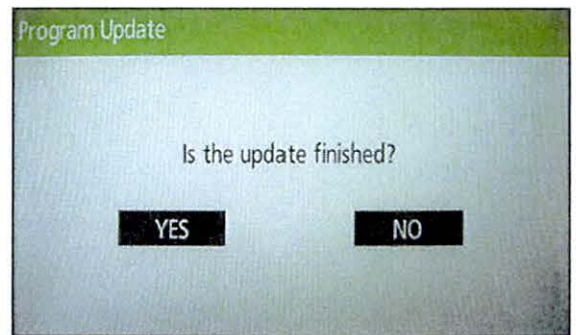
If the Current Version is NOT "3173," then turn ignition OFF and start again at step 1 of the programming procedure.

Figure 11.



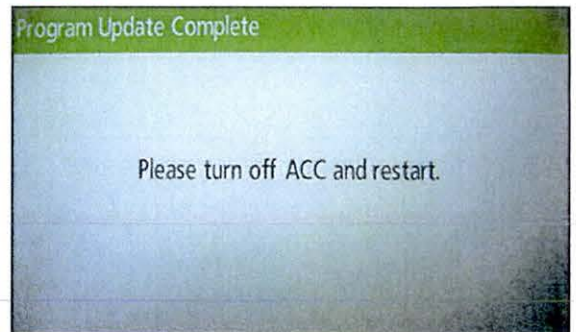
- Select *YES*.

Figure 12.



- Cycle the Ignition OFF to finish the updating procedure.

Figure 13.



Navigation System Firmware Improvement (Generation 5)

Update Procedure

Loading Navigation System Firmware into the Lexus Navigation System (Continued)

15. Press the "ENGINE START STOP" switch two times with the brake pedal released to cycle the ignition ON (Engine/Hybrid system OFF), and verify normal navigation system operation. Update is complete.
16. Remove items that block the GPS antenna, or move to an area where GPS satellite reception is present.
17. Refer to TIS, *Diagnostics – Tools & Equipment – Navigation – Reference Documents* for the latest Navigation Map Update bulletin.