

Subject

Program HVAC Driver Settings

Market

USA

Service Category

Vehicle Interior

Section

Heating/Air Conditioning

Applicability

13-14MY GS

APPLICABLE VEHICLES

2013-2014	GS350	2013-2014	GS450H
-----------	-------	-----------	--------

CONDITION

For applicable vehicles, smart access keys can be programmed to remember the most recent HVAC settings from the last time that key was in use. The keys can all be assigned to the same settings or individually for unique settings of different drivers.

Outlined below are the two processes for assigning driver HVAC settings to a vehicle's smart access keys (all the same driver or individual drivers).

*System White w/Asterisk = ECU not supported or not responding.

All ECUs	Powertrain	Chassis	Body Electrical
Master Switch		Sliding Roof	Tilt&Telescopic
Combination Meter		Intuitive P/A	AFS
Smart Access		Power Source Control	Occupant Detection
Night View		Remote Engine Starter	Navigation System
Multi Bus Gateway		Multi Bus Monitor No.1	Multi Bus Monitor No.2

This ECU controls keyless entry and starting engine. It determines whether or not to disable starting the engine depending on a comparison of the ID code and the vehicle's pre-registered code.

From Techstream **All ECUs** list, select **Smart Access**.
With key(s) in the vehicle, select **Utility**.

2013 GS450h
2GR-FXE

022505 mile
JTHBS1BL3D5000299

Trouble Codes

Data List

Utility Selection Menu

Select desired Utility and then press Next button.

Operation History	Wireless Door Lock Diagnosis Mode
Customize	Communication Check(Key Diag Mode)
ECU Communication ID Registration	Smart Code Erasure
Smart Code Registration (Classic)	Smart Code Registration
Smart Code Reset	Driver Information Registration

NOTE:

There are slightly different processes for assigning all keys to one setting and assigning keys to individual settings.

Subject

Market

Program HVAC Driver Settings

USA

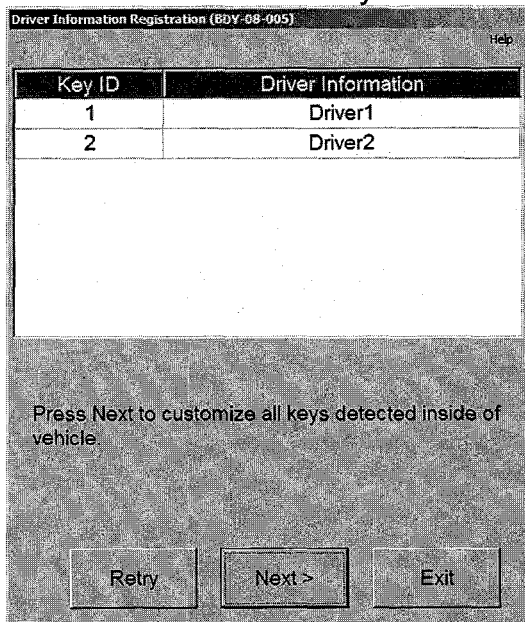
Applicability

13-14MY GS

To assign all keys to one HVAC setting:

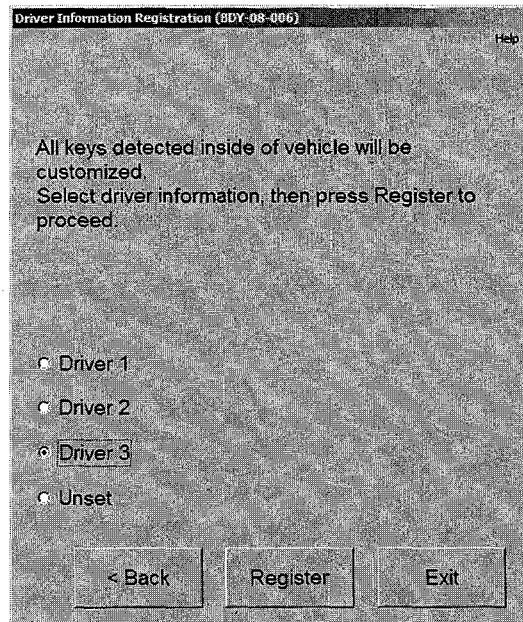
Place all keys inside vehicle and select **Driver Information Registration** within Utility.

Within the Utility:



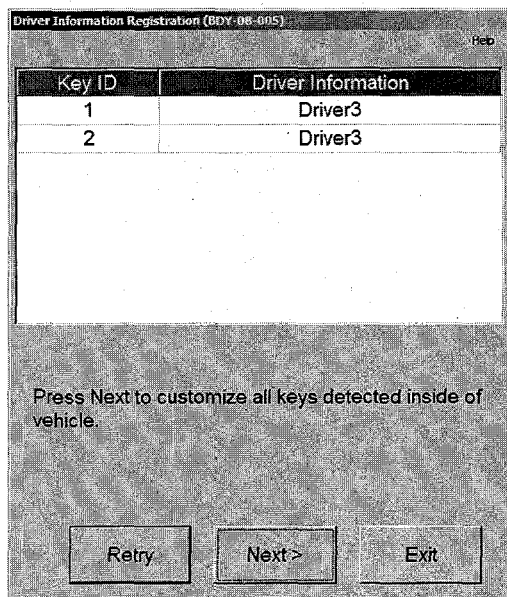
Key ID 1 is assigned to Driver1.
Key ID 2 is assigned to Driver2.

Select **Next >**



Select desired Driver Information.
For this example, Driver 3 was selected.

Select **Register**



Both Key IDs are now assigned to Driver3 settings.

Subject

Program HVAC Driver Settings

Market

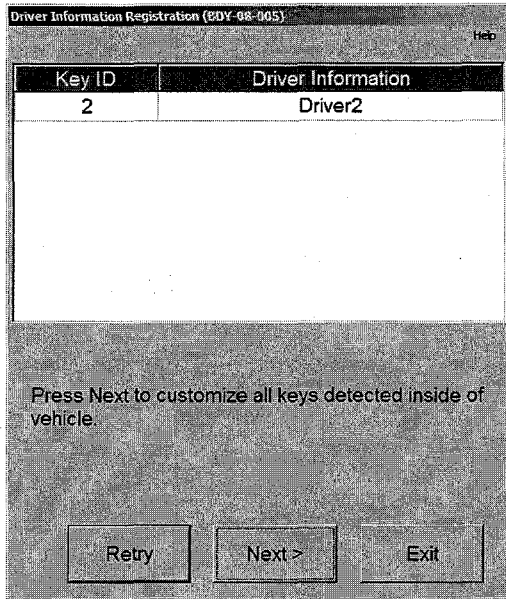
USA

Applicability

13-14MY GS

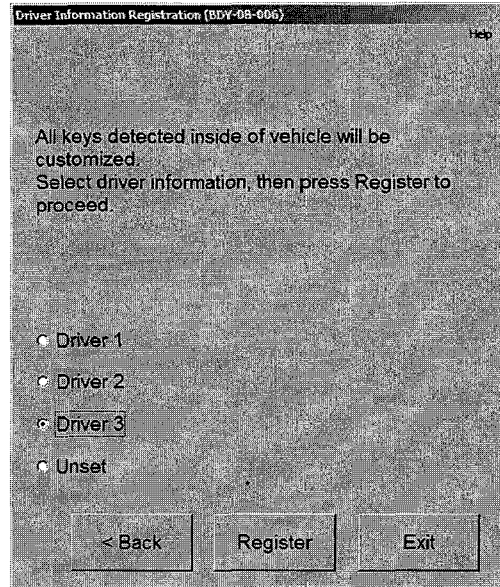
To assign keys to HVAC settings individually:

Place one key in the vehicle and select **Driver Information Registration** within Utility.
Repeat this process with a different key in the vehicle to program it separately.



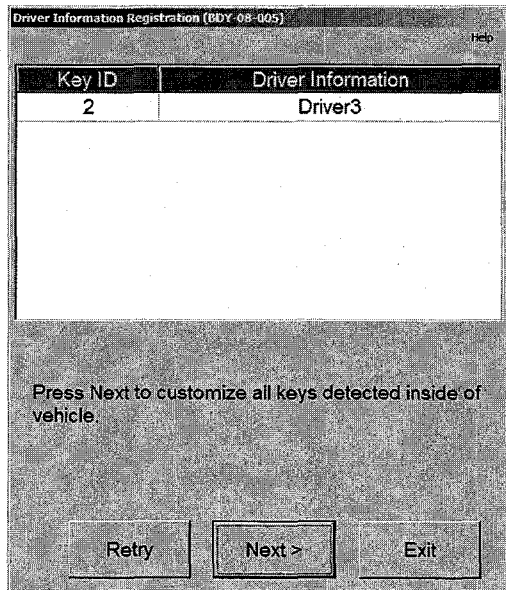
Key ID 2 is assigned to Driver2.

Select **Next >**



Select desired Driver Information.
For this example, Driver 3 was selected.

Select **Register**



Key ID 2 is now assigned to Driver3 settings.



Subject

Program HVAC Driver Settings

Market

USA

Applicability

13-14MY GS

LINK REFERENCES

This Tech Tip does not contain any link references

Click here to enter text.