


# Center Console Garnish Attachment Improvement

Service Category Vehicle Interior

Section Interior Panels/Trim

Market USA

Lexus Supports  
ASE Certification 

## Applicability

YEAR(S)	MODEL(S)	ADDITIONAL INFORMATION
2013	GS350, GS450H	

## Introduction

Some vehicles may exhibit the right and/or left center console garnish becoming loose from the center console at the rear-most area of the center console. Follow the repair procedure in this bulletin to address this condition.

## Production Change Information

This bulletin applies to vehicles produced **BEFORE** the Production Change Effective VINs shown below.

MODEL	ENGINE	DRIVETRAIN	PRODUCTION CHANGE EFFECTIVE VIN
GS 350	2GR-FSE	FR	JTHBE1BL#D5014998
		AWD	JTHCE1BL#D5011466
GS 450h	2GR-FXE	FR	JTHBS1BL#D5004347

## Warranty Information

OP CODE	DESCRIPTION	TIME	OFF	T1	T2
BD1253	R & R Side Finish Panel, Modify Panel and Replace Attaching Clips (one side)	0.5	55436-30190-##	62	57
			55435-30280-##		

### APPLICABLE WARRANTY

- This repair is covered under the Lexus Basic Warranty. This warranty is in effect for 48 months or 50,000 miles, whichever occurs first, from the vehicle's in-service date.
- Warranty application is limited to occurrence of the specified condition described in this bulletin.

## Center Console Garnish Attachment Improvement

### Parts Information

PREVIOUS PART NUMBER	CURRENT PART NUMBER	PART NAME	QTY
55436-30191-##	Same	Panel, Instrument Panel Finish, End, LH	–
55435-30281-##	Same	Panel, Instrument Panel Finish, End, RH	–
90467-10201	Same	Attaching Clip (1 side)	1
90467-12080	Same		4

**NOTE**  
 Part numbers 55436-30191-## and 55435-30281-## are for reference purposes only and should be modified only – not replaced.

### Required Tools & Equipment

REQUIRED MATERIALS	QTY
Tape Measure; 6 inch Scale	1
Stiff Knife or Heavy Duty Blade Cutter (capable of cutting through hard plastic)	1
Side Cutting Pliers (diagonal cutting pliers)	1
Marking Pencil (light color preferred)	1

### Repair Procedure

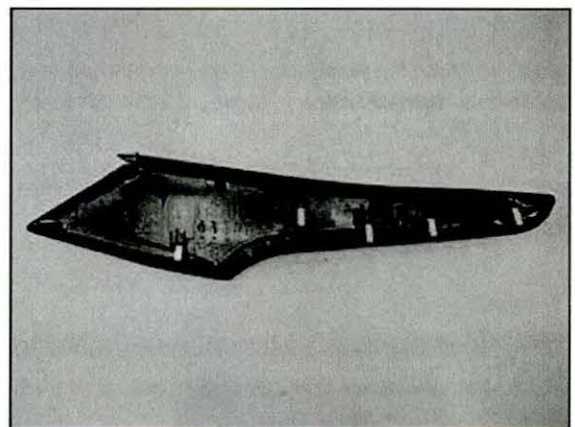
**NOTE**  
 This bulletin requires both left and right trim panels be modified.

1. Remove LH and RH instrument panel finish end (center console side garnish).

Refer to the Technical Information System (TIS), applicable model and model year Repair Manual:

- 2013 GS 350:  
*Vehicle Interior – Interior Panels / Trim – “Interior Panels / Trim: Front Console Box: Removal”*
- 2013 450h:  
*Vehicle Interior – Interior Panels / Trim – “Interior Panels / Trim: Front Console Box: Removal”*

Figure 1.



## Center Console Garnish Attachment Improvement

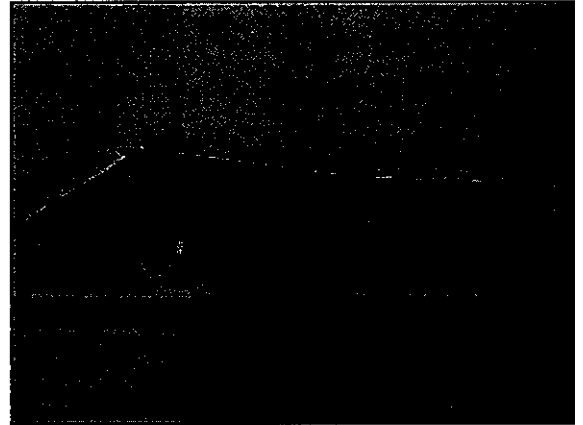
### Repair Procedure (Continued)

2. Remove and discard the five (5) clips attached to the center console side garnishes.

**NOTE**

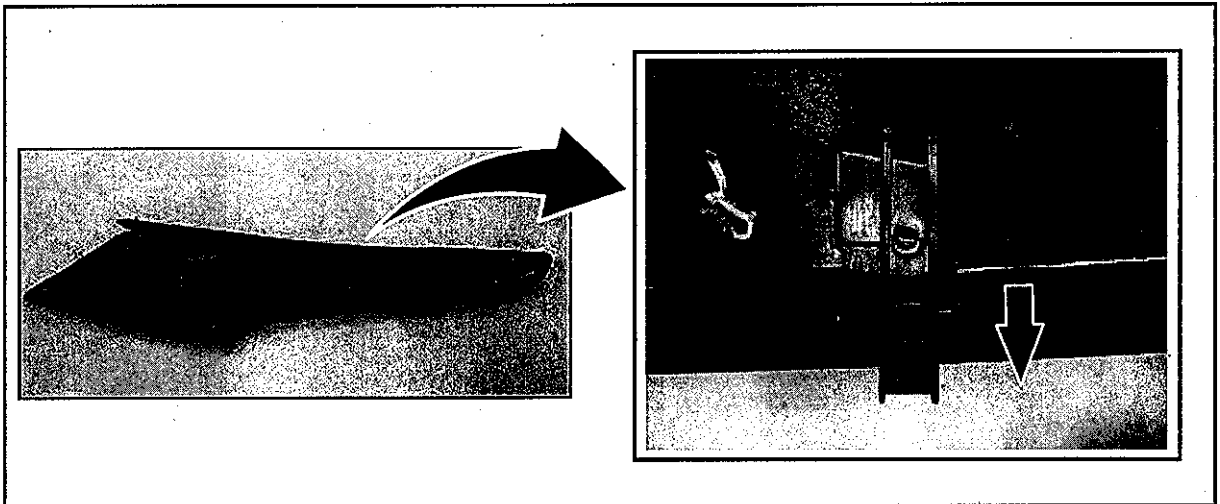
Moving from left to right, the white clip is in position one (1) and the farthest clip to the right is in position five (5).

Figure 2.



3. Remove the clip at position three (3).

Figure 3.

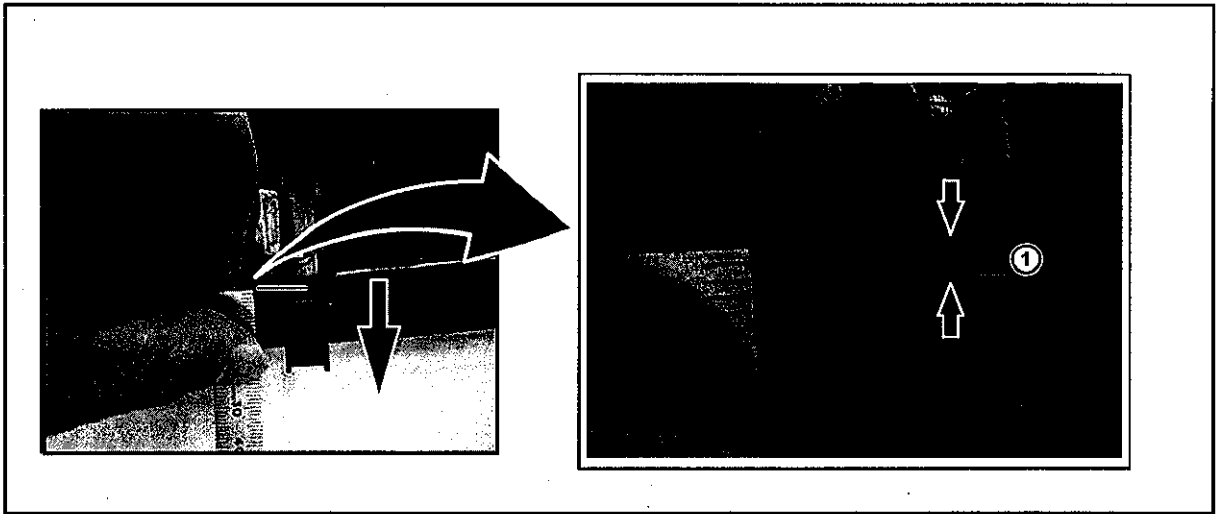


# Center Console Garnish Attachment Improvement

## Repair Procedure (Continued)

4. Scribe a line 2mm from the lower edge of the plastic locating boss.

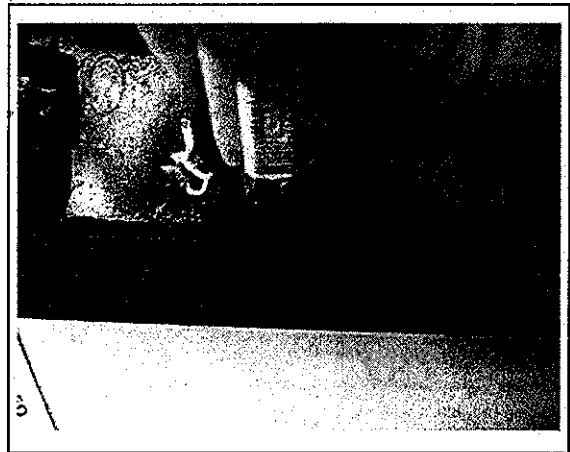
Figure 4.



1	2mm
---	-----

5. Using a sharp blade or other suitable plastic cutting tool, cut 2mm off the lower edge and lower end of the plastic locating boss.

Figure 5.



**NOTE**  
Make the first cut in a horizontal direction from left to right as shown (photo shows right side garnish).

## Center Console Garnish Attachment Improvement

---

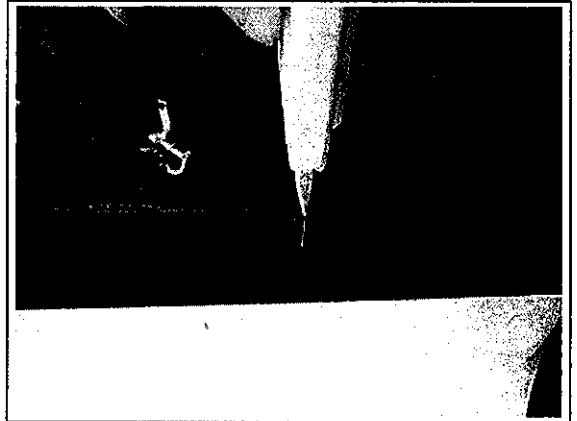
### Repair Procedure (Continued)

6. Make a second cut in a vertical direction, start at the bottom and work upward until the cut reaches the previous horizontal cut made in step 5. Remove plastic and discard.

**NOTE**

Use this method to modify clips in positions three (3) – four (4).

Figure 6.



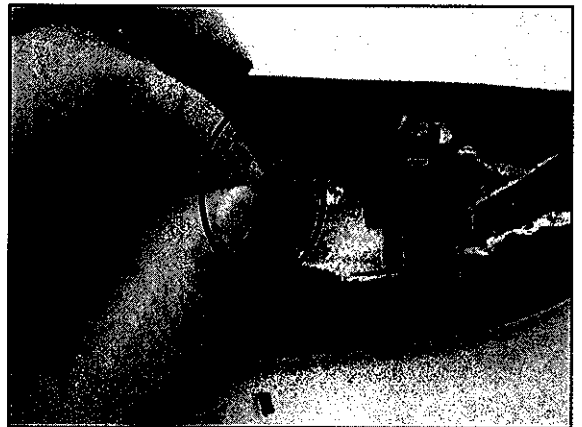
7. Locate the triangular shaped rib.

Figure 7.



8. Remove the anti-squeak felt from the triangular shaped rib.

Figure 8.



## Center Console Garnish Attachment Improvement

---

### Repair Procedure (Continued)

9. Cut off the top of the triangular shaped rib by using a pair of diagonal cutting pliers.

Figure 9.

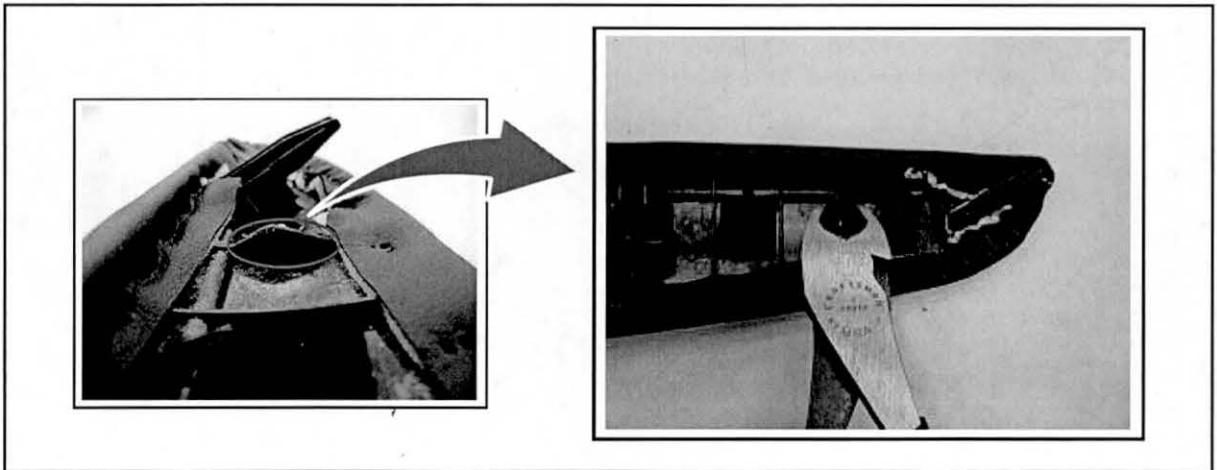
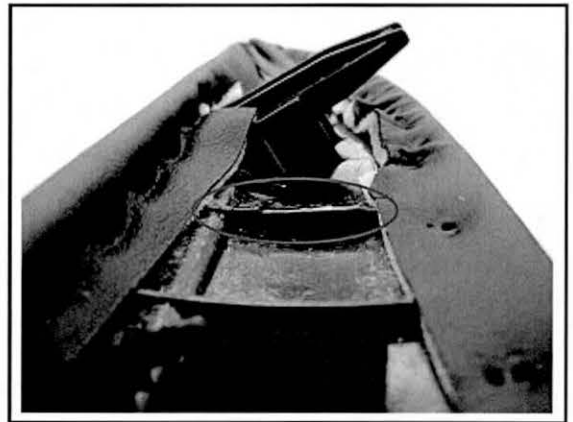


Figure 10. View of Rib with Top Portion Removed



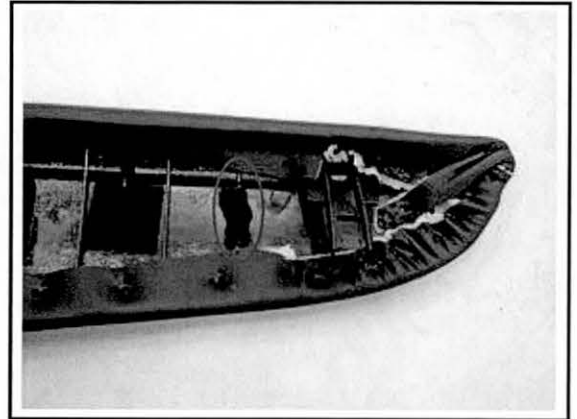
## Center Console Garnish Attachment Improvement

---

### Repair Procedure (Continued)

10. Apply a new strip of felt over the modified rib.

Figure 11.

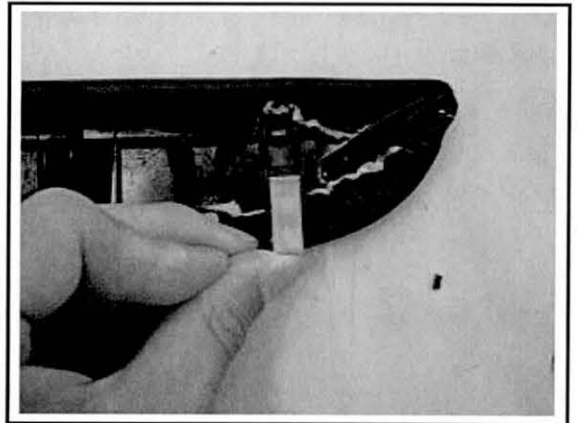


11. Install 5 new clips from left to right:

**90467-10201: 1 White Chip**

**90467-12080: 4 Pink Clips**

Figure 12.



12. Reinstall both side garnishes.

Refer to TIS, applicable model and model year Repair Manual:

- 2013 GS 350:  
*Vehicle Interior – Interior Panels / Trim – “Interior Panels / Trim: Front Console Box: Installation”*
- 2013 GS 450h:  
*Vehicle Interior – Interior Panels / Trim – “Interior Panels / Trim: Front Console Box: Installation”*

13. Test drive the vehicle to confirm proper operation.