



**I. RESET PCM/TCM ADAPTIVE VALUES WITH GDS:****SERVICE PROCEDURE**

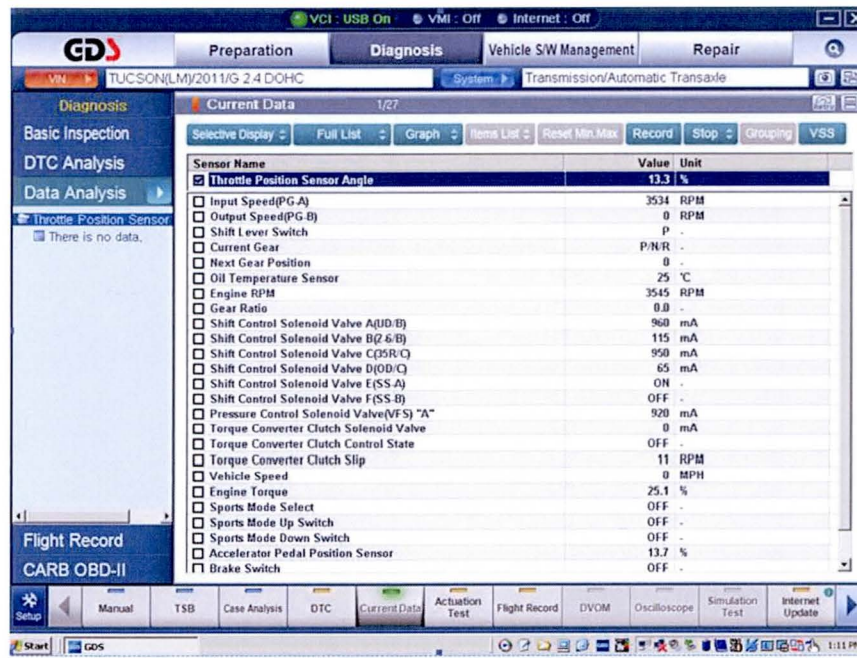
1. Attach a GDS and select VIN and A/T menu.
2. From the main screen, select “**Option Treatment**”
3. Select “**Resetting Auto T/A values**” and follow the screen prompts.

**GDS must be used to reset (erase) the adaptive learning for the following vehicles.**

<b>MODEL</b>	<b>YEAR</b>	<b>GDS REQUIRED</b>
ACCENT	2006~	ALL
AZERA	2006~	ALL
ELANTRA SEDAN	2003~	From 12/01/2002
ELANTRA TOURING	2009~	ALL
ELANTRA GT & COUPE	2013~	ALL
ENTOURAGE	2007~08	ALL
EQUUS	2011~	ALL
GENESIS COUPE	2010~	ALL
GENESIS SEDAN	2009~	ALL
SANTA FE	2005~06	ALL
SANTA FE	2007~09	ALL
SANTA FE	2010~	ALL
SONATA	2005~	ALL
SONATA	2006~10	ALL
SONATA	2011~	ALL
SONATA HEV	2011~	ALL
TIBURON	2005~08	ALL
TUCSON	2005~09	ALL
TUCSON	2010~	ALL
XG350	2005~	ALL
VERACRUZ	2007~12	ALL
VELOSTER DCT	2012~	TSB 13-AT-003
VELOSTER TURBO	2013~	ALL

## II. RELEARN ADAPTIVE VALUES:

1. Attach a GDS and select VIN and A/T menu, Current Data and **Throttle Position Sensor**.



2. Drive the vehicle until the ATF temperature is within the range shown on Page 4.
3. Request an assistant to monitor the GDS:  
Accelerate from a stop at the TPS specification while the transmission shifts through gears 1-2-3-4-5-6-7-8 (if equipped) and decelerate slowly to a stop. Repeat 5 times.

### \* NOTE

Hold the accelerator pedal steady during the upshifts.

Do not exceed local speed limits.

4. Stop the vehicle and move the shift lever from N to D and N to R, stopping 3~5 seconds in each gear. Repeat 5 times.

**SUBJECT: AUTOMATIC TRANSAXLE CONTROL MODULE – RESET AND RELEARN ADAPTIVE VALUES**

MODEL	YEAR	ENGINE	TPS	ATF TEMPERATURE
ACCENT (MC/LC)	2000~11	1.6L	25~35%	122~194°F (50~90°C)
ACCENT (RB)	2012~	1.6L	15~25%	104~194°F (40~90°C)
AZERA (TG)	2006~10	3.3, 3.8L	25~35%	50~122°F (10~50°C)
AZERA (TG)	2011	3.3L, 3.8L	10~30%	140~240°F (60~115°C)
AZERA (HG)	2012~	3.3, 3.8L	15~25%	104~212°F (40~100°C)
ELANTRA SEDAN (XD)	2001~06	1.6L	25~35%	122~194°F (50~90°C)
ELANTRA SEDAN (HD)	2007~10	2.0L	25~35%	50~122°F (10~50°C)
ELANTRA TOURING (FD)	2009~12	2.0L	25~35%	50~122°F (10~50°C)
ELANTRA SEDAN (MD/UD)	2011~	1.8L	15~25%	104~212°F (40~100°C)
ELANTRA GT (GD) & COUPE (JK)	2013~	1.8L	15~25%	104~212°F (40~100°C)
ENTOURAGE (EP)	2007~08	3.8L	25~35%	50~122°F (10~50°C)
EQUUS (VI)	2011	4.6L, 5.0L	13~17%	122~248°F (50~120°C)
EQUUS (VI)	2012~	5.0L	15~30%	86~203°F (30~95°C)
GENESIS COUPE (BK)	2010~12	3.8L	15~20%	122~248°F (50~120°C)
GENESIS COUPE (BK)	2010~12	2.0L	10~13%	68~248°F (20~120°C)
GENESIS COUPE (BK)	2013~	2.0L, 3.8L	15~30%	86~203°F (30~95°C)
GENESIS SEDAN (BH)	2009~11	3.8L	25~35%	151~230°F (66~110°C)
GENESIS SEDAN (BH)	2009~11	4.6L	15~20%	122~248°F (50~120°C)
GENESIS SEDAN (BH)	2012~	3.8L, 4.6L, 5.0L	15~30%	86~203°F (30~95°C)
SANTA FE (SM)	2001~06	2.4L, 2.7L, 3.5L	25~35%	50~122°F (10~50°C)
SANTA FE (CM)	2007~09	2.7L, 3.3L	25~35%	50~122°F (10~50°C)
SANTA FE (CM)	2010~12	2.4L, 3.5L	15~30%	140~239°F (60~115°C)
SANTA FE (NC/AN)	2013~	2.0L, 2.4L, 3.3L	15~25%	104~212°F (40~100°C)
SONATA (EF)	1999~2005	2.4L, 2.7L	25~35%	50~122°F (10~50°C)
SONATA (NF)	2006~10	2.4L, 3.3L	25~35%	50~122°F (10~50°C)
SONATA (YF)	2011~	2.4L	15~30%	140~239°F (60~115°C)
SONATA (YF)	2011~	2.0L	15~25%	104~212°F (40~100°C)
SONATA HEV (YF)	2011~	2.4L	10~15%	104~203°F (40~95°C)
TIBURON (GK)	2003~08	2.0L, 2.7L	25~35%	50~122°F (10~50°C)
TUCSON (JM)	2005~09	2.0L, 2.7L	25~35%	50~122°F (10~50°C)
TUCSON (LM)	2010~	2.0L, 2.4L	15~30%	140~239°F (60~115°C)
VERACRUZ (EN)	2007~12	3.8L	25~35%	151~230°F (66~110°C)
VELOSTER (FS) DCT	2012~	1.6L	TSB 13-AT-003	
VELOSTER TURBO (FS)	2013~	1.6L Turbo	15~25%	104~212°F (40~100°C)
XG300 (XG)	2001	3.0L	25~35%	122~194°F (50~90°C)
XG350 (XG)	2002~05	3.5L	25~35%	50~122°F (10~50°C)