



GROUP  
Engine

MODEL

2013MY Rio 1.6L, Soul 1.6L & 2.0L,  
Forte 2.0, Optima 2.4L, Sorento 2.4L  
& 2.4L GDI, Sorento 3.5L

NUMBER  
124

DATE

October 2013

## TECHNICAL SERVICE BULLETIN

SUBJECT:

DATA COLLECTION: EXTRACT CALIFORNIA  
EMISSIONS DATA FROM ECU (DC004)

This bulletin provides information related to extracting "in use performance tracking" emissions data from the engine control unit (ECU) in certain vehicles sold in California. The California Air Resources Board (CARB) requires the emissions data from vehicles with a minimum of 3000 accumulated miles without reprogramming or resetting. To facilitate collection of this data at the dealer level, GDS screen shots will allow the capture of relevant parameters.

### \*NOTICE

**IF THE VEHICLE MEETS THE CRITERIA BELOW, CALIFORNIA DEALERS MUST PERFORM THIS DATA COLLECTION ON VEHICLES WHENEVER AN AFFECTED VEHICLE IS IN THE SHOP FOR ANY MAINTENANCE OR REPAIR.**

**THIS DATA COLLECTION DOES NOT APPLY TO VEHICLES OR DEALERS OPERATING OUTSIDE OF CALIFORNIA.**

For vehicles listed on DCS as requiring this procedure, follow the instructions in this bulletin after confirming that the following criteria are met:

- **WebDCS shows this as an open Data Collection code DC004A→T (depending on model) for the vehicle.**

### \*NOTICE

**Note that as sufficient data is collected, individual line items per model may be closed without updates to the TSB. Once a line item is closed on DCS, no further data collection is required. Data collections initiated after a line item is closed are subject to chargeback.**

- **Vehicle has more than 3000 miles on its odometer.**
- **Vehicle repair history does not show battery replacement/disconnection/reset or an ECU Update done in the last 3000 miles, because IUMPR (In Use Monitor Performance Ratio) data would have been cleared by such an event.**
- **Vehicle does not have a check engine light ON.**

File Under: <Engine>

Circulate To:       General Manager       Service Manager       Parts Manager  
 Service Advisor(s)  Technician(s)       Body Shop Manager       Fleet Repair

**SUBJECT:**

**DATA COLLECTION: EXTRACT CALIFORNIA EMISSIONS DATA FROM ECU (DC004)**



**CAUTION**

If vehicle meets above criteria, collect data prior to any other campaign or repair-related activities.

**Service Procedure:**

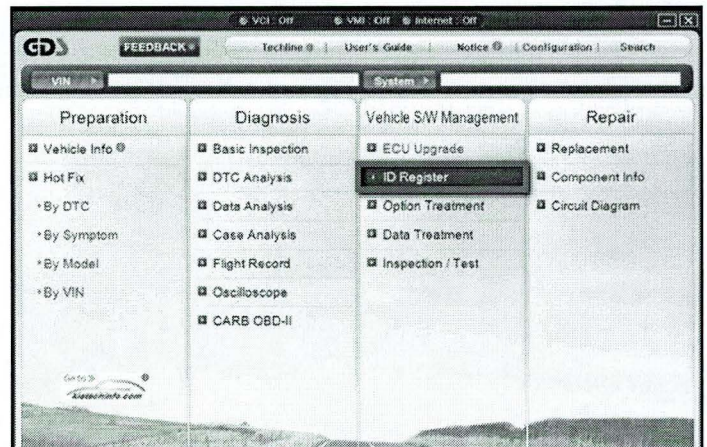
1. Open the engine compartment and locate the emission label under the hood. Locate and write down the “**Group**” number for later entry into the form.

	KIA MOTORS CORPORATION VEHICLE EMISSION CONTROL INFORMATION	
Conforms to regulations :		2012 MY
U.S.EPA : For sale only in states with California emissions standards		OBD : N/A Fuel : N/A
California : SULEV (ZEV) PC		OBD : CA II Fuel : Gasoline
No adjustments needed.		SFI/HO2S(2)/WU-TWC/TWC
Group : CKMXV02.0TPC	<b>CG13</b>	32453-2G133
Evap. : CKMXR0140PPT		

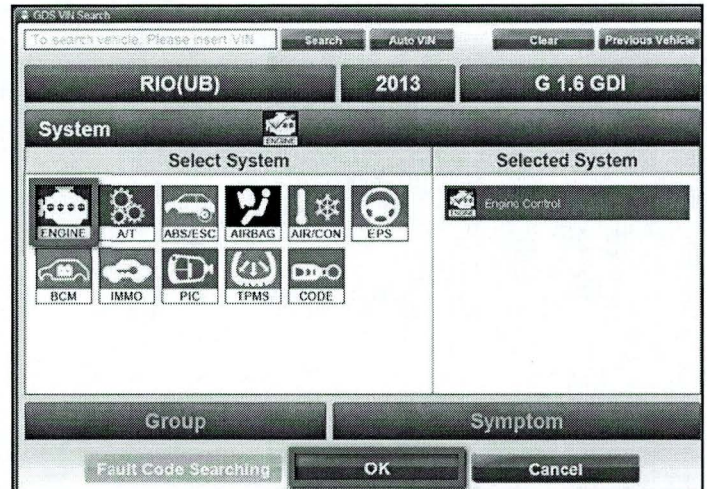
2. To start, use the Global Diagnostic System (GDS). Begin by clicking on “**ID Register.**” Click on “**Auto VIN**” or manually enter vehicle information on the next screen.

**\*NOTICE**

GDS must be updated to version N-K-01-10-0012 or later to properly collect data!

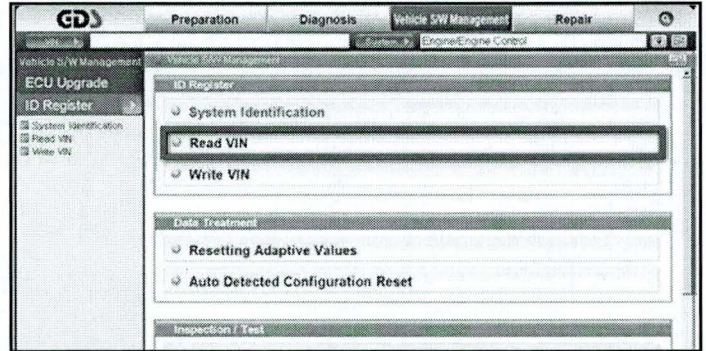


3. Choose “**Engine**” under “**Select System.**” Click “**OK**” and follow on screen instructions for connecting to vehicle.

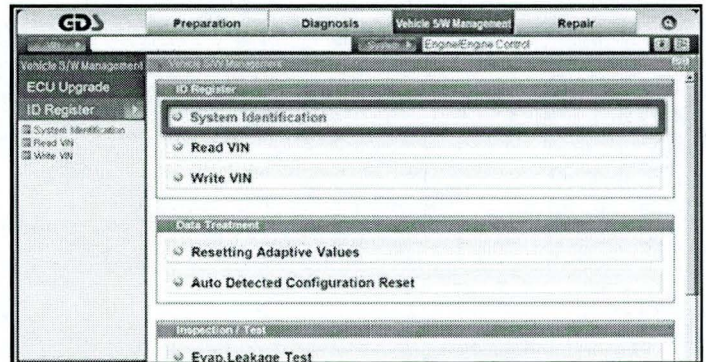


**SUBJECT: DATA COLLECTION: EXTRACT CALIFORNIA EMISSIONS DATA FROM ECU (DC004)**

- 4. To verify the VIN, select **“Read VIN”** under the **“Vehicle S/W Management”** menu. Click **“OK”** and write down the VIN for later entry into form.



- 5a. Select **“System Identification.”**



- 5b. Do a screen capture of **“Calibration ID”** or **“ROM ID”** number for later form entry.

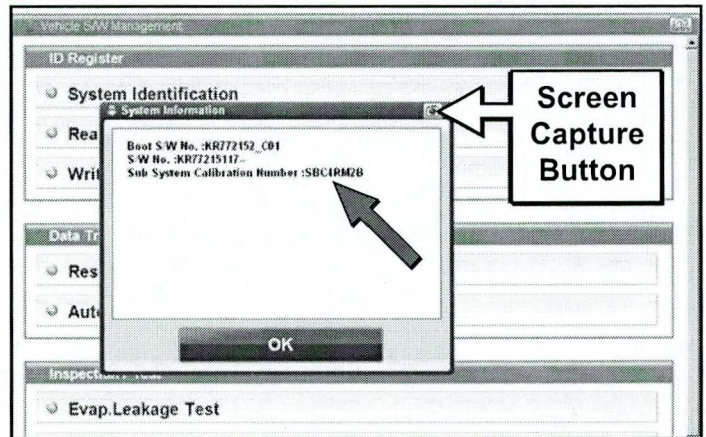
Select **“Scantool Area – Full”** and click **“Send to file.”** The GDS will set up a designation folder and file name to save the captured data. Please change the file name to include the model/engine, the last 6 digits of the VIN and the date (mmddyyyy).

Before saving, write down the file name and designation folder for further reference.

**Example:** KM20L\_703429\_12142012

↑                    ↑                    ↑  
(Model & Eng.) (VIN) (mmddyyyy)

Next, go to the main screen by clicking on the "GDS" logo at the top left of the screen.

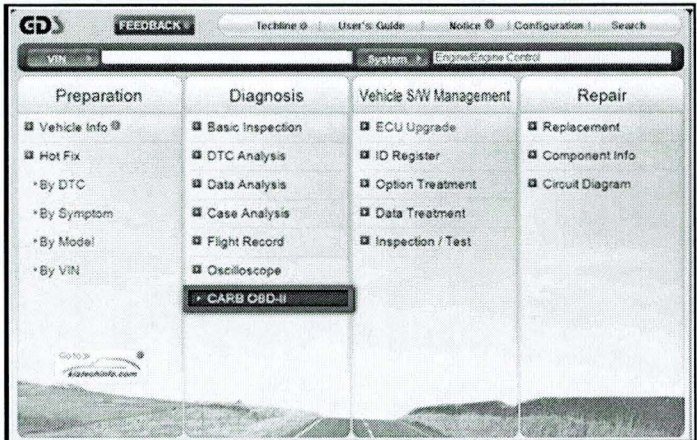


**\*NOTICE**

Before saving, write down the Calibration Number (indicated by red arrow) for further reference.

**SUBJECT: DATA COLLECTION: EXTRACT CALIFORNIA EMISSIONS DATA FROM ECU (DC004)**

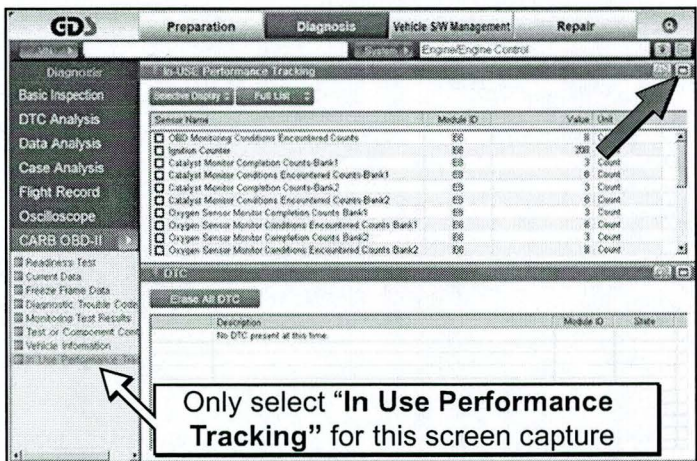
- Then select “CARB OBD-II” under the “Diagnosis” tab.



- Click on “IN-USE Performance Tracking” found in the CARB OBD-II list at the bottom left of the screen. Then click the “Expand” button at the top right corner of “IN-USE Performance Tracking” window.

**\*NOTICE**

If all values indicate "Not Supported" or "0", check to make sure you have GDS software version N-K-01-10-0012 or later. If the software version is correct, and all values show "Not Supported" or "0", the vehicle will not qualify for this data collection, as it may have received a recent ECM Update or battery replacement/reset of the data values.

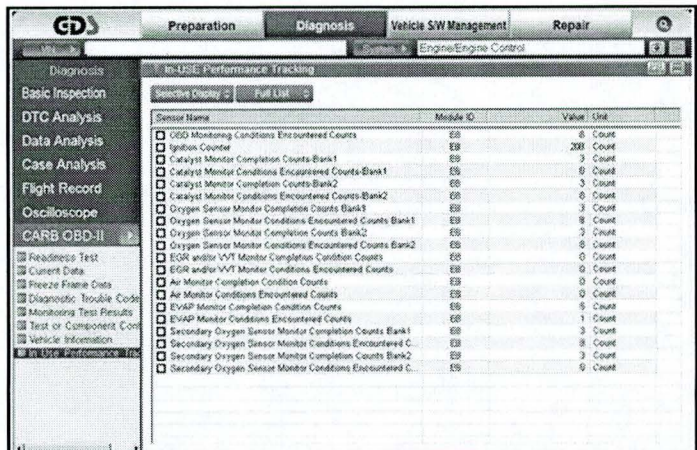


Only select “In Use Performance Tracking” for this screen capture

- To capture the GDS data, click on the “Capture” button.

**\*NOTICE**

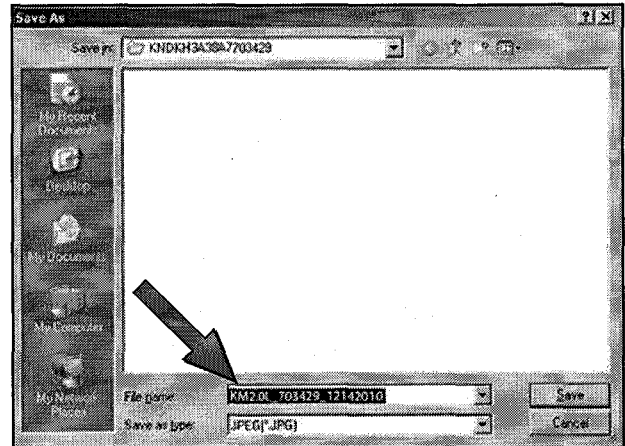
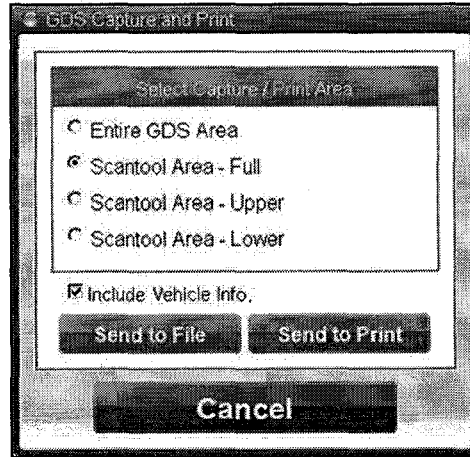
Make sure you capture the entire screen, if only part of the list is displayed, first click “Expand” button, then proceed to capture the entire screen.



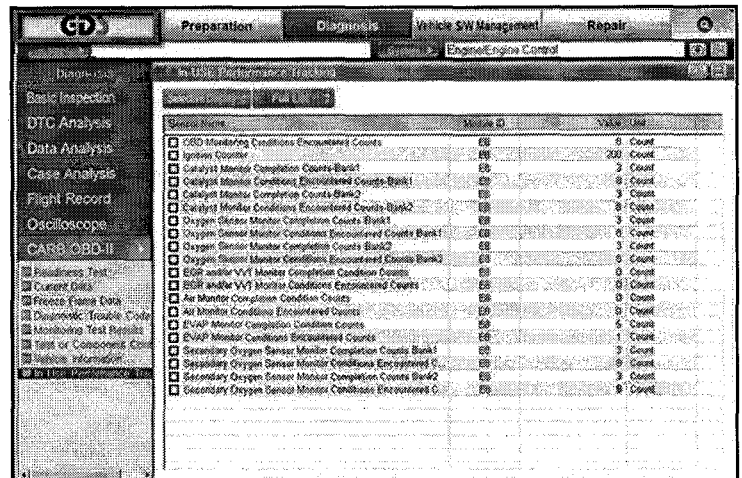
**SUBJECT: DATA COLLECTION: EXTRACT CALIFORNIA EMISSIONS DATA FROM ECU (DC004)**

9. Select **"Scantool Area – Full"** and click **"Send to file."** The GDS will set up a designation folder and file name to save the captured data. Please change the file name to include the model/engine, the last 6 digits of the VIN and the date (mmddyyyy). Before saving, write down the file name and designation folder for further reference.

**Example:** KM20L\_703429\_12142012  
 ↑                    ↑                    ↑  
 (Model & Eng.) (VIN) (mmddyyyy)



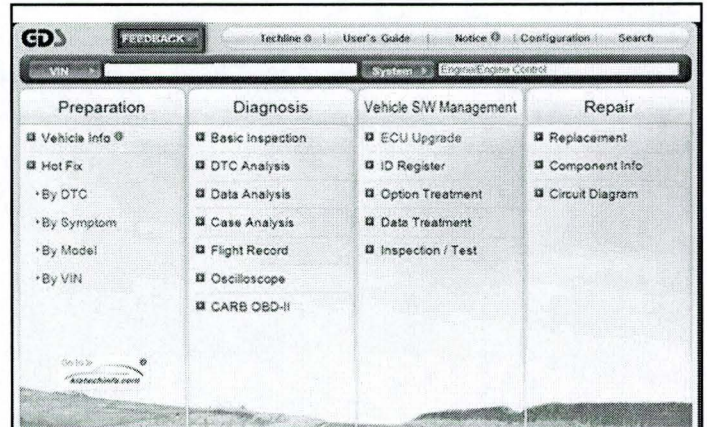
10. After saving the file, return to the GDS home page by clicking on the **"GDS"** logo in the upper left hand corner.



**SUBJECT:**

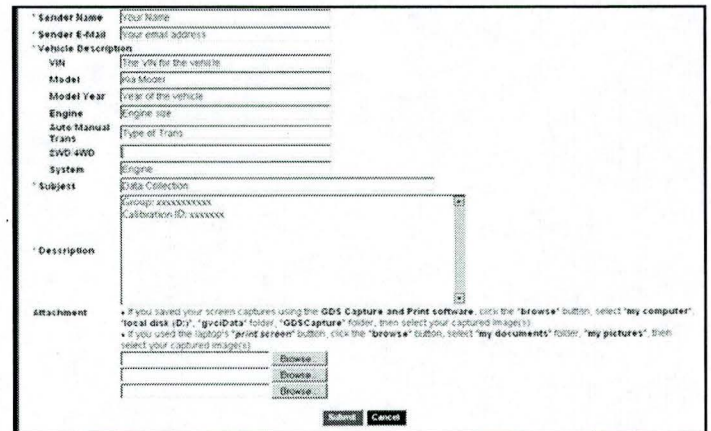
**DATA COLLECTION: EXTRACT CALIFORNIA EMISSIONS DATA FROM ECU (DC004)**

11. Then click on the “Feedback” button.



12. Enter all the information requested in the form including your name and email address.

- For System, enter “Engine.”
- For Subject, enter “Data Collection.”
- In the Description area:
  - Type “**Group:**” followed by the group number from the Vehicle Emission Control Information label in Step 1.
  - Type “**Calibration ID:**” followed by the calibration ID obtained in Step 5b.
  - Add current odometer mileage.
  - Add RO#.

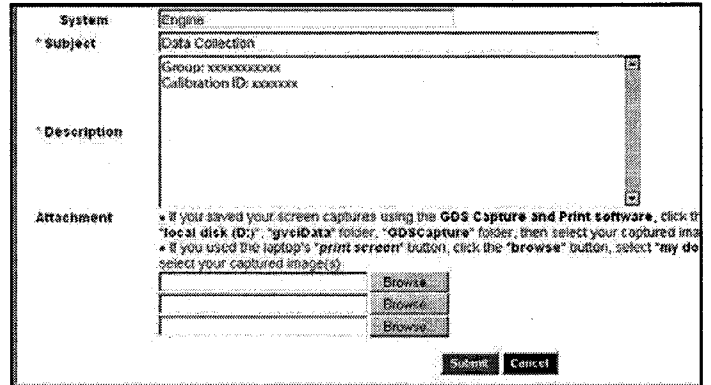


**\*NOTICE**

Please check to ensure both group and Cal ID numbers are correctly entered.

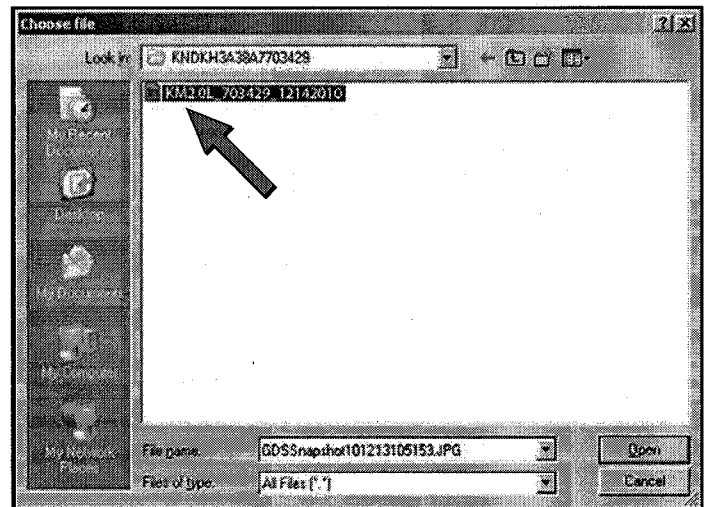
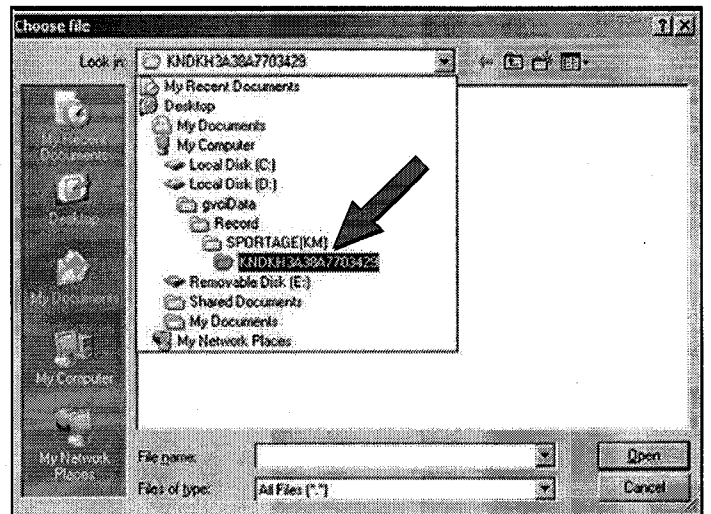
**SUBJECT: DATA COLLECTION: EXTRACT CALIFORNIA EMISSIONS DATA FROM ECU (DC004)**

13. To attach the data to the feedback form, click on the **"Browse"** button.



14. Refer to the file name and destination from Step 9.

- Navigate to: Local Disk (D:) / gvcData / Record /
- Click on the folder for the vehicle i.e., **"Sportage (KM)."**
- Click on the folder containing the vehicle VIN.
- Click on the file name.
- Once the file name appears in the **"File Name"** box, click on the **"Open"** button. Once file name appears in attachment field, repeat and attach
- Screen capture of **"Calibration ID"** or **"ROM ID"** number from Step 5b.



**\*NOTICE**

Ensure that you attach the correct files by confirming they are the same as those specified in Steps 5b & 9. Incorrect attachments render data submissions useless and are subject to a charge back of the warranty claim.

SUBJECT:

# DATA COLLECTION: EXTRACT CALIFORNIA EMISSIONS DATA FROM ECU (DC004)

15. When the file name appears in the attachment field and all the information has been entered, click the "Submit" button.

## \*NOTICE

GDS must be connected to the internet to submit data.

The screenshot shows a web browser window titled "Global Information System (GDS) - Microsoft Internet Explorer". The page contains a form with the following fields and options:

- Dealer Code:** WFT002
- Sender Name:** Your Name
- Sender E-Mail:** Your email address
- Vehicle Description:** The vehicle's vehicle
- VIN:** The vehicle's VIN
- Model:** Its Model
- Model Year:** Year of the vehicle
- Engine:** Engine size
- Auto/Manual:** Type of Trans
- Trans:** Type of Trans
- 2WD/4WD:**
- System:** Engine
- Subject:** Data Collection Group Name street# California CA from step 45
- Description:**
- Attachment:** A list of files with "Browse" buttons next to each. The list includes:
  - gdsData\Wincc\GDS\PORTACD1
  - gdsData\Wincc\GDS\PORTACD2
  - gdsData\Wincc\GDS\PORTACD3
  - gdsData\Wincc\GDS\PORTACD4
  - gdsData\Wincc\GDS\PORTACD5
  - gdsData\Wincc\GDS\PORTACD6
  - gdsData\Wincc\GDS\PORTACD7
  - gdsData\Wincc\GDS\PORTACD8
  - gdsData\Wincc\GDS\PORTACD9
  - gdsData\Wincc\GDS\PORTACD10
  - gdsData\Wincc\GDS\PORTACD11
  - gdsData\Wincc\GDS\PORTACD12
  - gdsData\Wincc\GDS\PORTACD13
  - gdsData\Wincc\GDS\PORTACD14
  - gdsData\Wincc\GDS\PORTACD15
  - gdsData\Wincc\GDS\PORTACD16
  - gdsData\Wincc\GDS\PORTACD17
  - gdsData\Wincc\GDS\PORTACD18
  - gdsData\Wincc\GDS\PORTACD19
  - gdsData\Wincc\GDS\PORTACD20
  - gdsData\Wincc\GDS\PORTACD21
  - gdsData\Wincc\GDS\PORTACD22
  - gdsData\Wincc\GDS\PORTACD23
  - gdsData\Wincc\GDS\PORTACD24
  - gdsData\Wincc\GDS\PORTACD25
  - gdsData\Wincc\GDS\PORTACD26
  - gdsData\Wincc\GDS\PORTACD27
  - gdsData\Wincc\GDS\PORTACD28
  - gdsData\Wincc\GDS\PORTACD29
  - gdsData\Wincc\GDS\PORTACD30
  - gdsData\Wincc\GDS\PORTACD31
  - gdsData\Wincc\GDS\PORTACD32
  - gdsData\Wincc\GDS\PORTACD33
  - gdsData\Wincc\GDS\PORTACD34
  - gdsData\Wincc\GDS\PORTACD35
  - gdsData\Wincc\GDS\PORTACD36
  - gdsData\Wincc\GDS\PORTACD37
  - gdsData\Wincc\GDS\PORTACD38
  - gdsData\Wincc\GDS\PORTACD39
  - gdsData\Wincc\GDS\PORTACD40
  - gdsData\Wincc\GDS\PORTACD41
  - gdsData\Wincc\GDS\PORTACD42
  - gdsData\Wincc\GDS\PORTACD43
  - gdsData\Wincc\GDS\PORTACD44
  - gdsData\Wincc\GDS\PORTACD45
  - gdsData\Wincc\GDS\PORTACD46
  - gdsData\Wincc\GDS\PORTACD47
  - gdsData\Wincc\GDS\PORTACD48
  - gdsData\Wincc\GDS\PORTACD49
  - gdsData\Wincc\GDS\PORTACD50
  - gdsData\Wincc\GDS\PORTACD51
  - gdsData\Wincc\GDS\PORTACD52
  - gdsData\Wincc\GDS\PORTACD53
  - gdsData\Wincc\GDS\PORTACD54
  - gdsData\Wincc\GDS\PORTACD55
  - gdsData\Wincc\GDS\PORTACD56
  - gdsData\Wincc\GDS\PORTACD57
  - gdsData\Wincc\GDS\PORTACD58
  - gdsData\Wincc\GDS\PORTACD59
  - gdsData\Wincc\GDS\PORTACD60
  - gdsData\Wincc\GDS\PORTACD61
  - gdsData\Wincc\GDS\PORTACD62
  - gdsData\Wincc\GDS\PORTACD63
  - gdsData\Wincc\GDS\PORTACD64
  - gdsData\Wincc\GDS\PORTACD65
  - gdsData\Wincc\GDS\PORTACD66
  - gdsData\Wincc\GDS\PORTACD67
  - gdsData\Wincc\GDS\PORTACD68
  - gdsData\Wincc\GDS\PORTACD69
  - gdsData\Wincc\GDS\PORTACD70
  - gdsData\Wincc\GDS\PORTACD71
  - gdsData\Wincc\GDS\PORTACD72
  - gdsData\Wincc\GDS\PORTACD73
  - gdsData\Wincc\GDS\PORTACD74
  - gdsData\Wincc\GDS\PORTACD75
  - gdsData\Wincc\GDS\PORTACD76
  - gdsData\Wincc\GDS\PORTACD77
  - gdsData\Wincc\GDS\PORTACD78
  - gdsData\Wincc\GDS\PORTACD79
  - gdsData\Wincc\GDS\PORTACD80
  - gdsData\Wincc\GDS\PORTACD81
  - gdsData\Wincc\GDS\PORTACD82
  - gdsData\Wincc\GDS\PORTACD83
  - gdsData\Wincc\GDS\PORTACD84
  - gdsData\Wincc\GDS\PORTACD85
  - gdsData\Wincc\GDS\PORTACD86
  - gdsData\Wincc\GDS\PORTACD87
  - gdsData\Wincc\GDS\PORTACD88
  - gdsData\Wincc\GDS\PORTACD89
  - gdsData\Wincc\GDS\PORTACD90
  - gdsData\Wincc\GDS\PORTACD91
  - gdsData\Wincc\GDS\PORTACD92
  - gdsData\Wincc\GDS\PORTACD93
  - gdsData\Wincc\GDS\PORTACD94
  - gdsData\Wincc\GDS\PORTACD95
  - gdsData\Wincc\GDS\PORTACD96
  - gdsData\Wincc\GDS\PORTACD97
  - gdsData\Wincc\GDS\PORTACD98
  - gdsData\Wincc\GDS\PORTACD99
  - gdsData\Wincc\GDS\PORTACD100

At the bottom of the form are "Submit" and "Cancel" buttons.

16. Click on the "Close" button to finish.

## \*NOTICE

You may also print the data prior to submitting as record to attach to the RO.

The screenshot shows a "GDS Feedback" message box with the text: "Your feedback has been sent to EMA administrator." Below the text is a "Close" button.



**SUBJECT:**

**DATA COLLECTION: EXTRACT CALIFORNIA  
EMISSIONS DATA FROM ECU (DC004)**

**AFFECTED VEHICLE PRODUCTION RANGE:**

Model	Production Range
<ul style="list-style-type: none"> <li>• Rio 1.6L</li> <li>• Soul 1.6L &amp; 2.0L</li> <li>• Forte 2.0</li> <li>• Optima 2.4L</li> <li>• Sorento 2.4L &amp; 2.4L GDI</li> <li>• Sorento 3.5L</li> </ul>	<b>2013MY</b>

**2013MY DATA COLLECTION WARRANTY CLAIM INFORMATION:**

**\*NOTICE**

As sufficient data is collected, individual line items per model may be closed without updates to the TSB. Once a line item is closed on DCS, no further data collection is required. Data collections initiated after a line item is closed are subject to chargeback.

Campaign ID	Claim Type	Causal P/N	Qty	N Code	C Code	Repair Description	Labor Op Code	Time	Replacement P/N	Qty
DC004A	V	100CA EM999	0	N99	C99	Extract ECU data: Rio 1.6L	13HCARQA	0.3 M/H	N/A	0
DC004B	V					Extract ECU data: Soul 1.6L	13HCARQB			
DC004C	V					Extract ECU data: Soul 2.0L	13HCARQC			
DC004D	V					Extract ECU data: Forte 2.0 SULEV	13HCARQD			
DC004E	V					Extract ECU data: Optima 2.4L SULEV	13HCARQE			
DC004F	V					Extract ECU data: Sorento 2.4L	13HCARQF			
DC004G	V					Extract ECU data: Sorento 2.4L GDI	13HCARQG			
DC004H	V					Extract ECU data: Sorento 3.5L	13HCARQH			

**\*NOTICE**

VIN inquiry data for this repair is provided for tracking purposes only. Kia retailers should reference DC004 when accessing the WebDCS system.