



GROUP
BODY

MODEL
Sorento (XMa)
2011-2013MY

NUMBER
093 (Rev 1, 08/22/2013)

DATE
February 2013

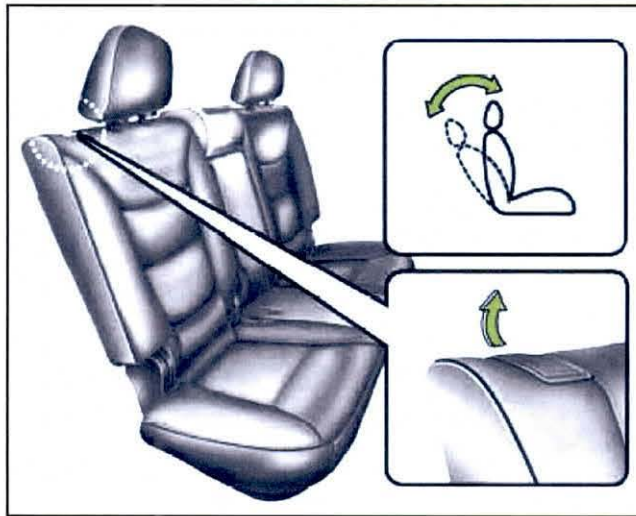
TECHNICAL SERVICE BULLETIN

SUBJECT: SECOND ROW SEAT INOPERATIVE OR DIFFICULT TO RELEASE

★ NOTICE

This bulletin has been revised to include additional information. New/revised sections of this bulletin are indicated by a black bar in the margin area.

This bulletin provides information related to some 2011-2013MY Sorento (XMa) vehicles, produced from October 26, 2009 to November 5, 2012, which may exhibit a concern related to the second row seats being inoperative or difficult to release. It is important to note that some amount effort is required to fold the 2nd row seats. To correct this condition, follow the service procedures outlined in this TSB. Refer to the table below for detailed information on each concern and the associated service procedure.



Service Procedure	Concern
1	NO TENSION ON RECLINING HANDLE (RH SIDE (40%) SEAT / 5-PASSENGER MODEL)
2	NO TENSION ON RECLINING HANDLE (LH SIDE (60%) seat / 5 OR 7 PASSENGER MODEL)
3	EXCESS TENSION ON RECLINING HANDLE (BOTH SIDES)

File Under: <Body>

Circulate To: General Manager Service Manager Parts Manager
 Service Advisor(s) Technician(s) Body Shop Manager Fleet Repair

SUBJECT:

SECOND ROW SEAT INOPERATIVE OR DIFFICULT TO RELEASE

SERVICE PROCEDURE 1 - NO TENSION ON RECLINING HANDLE (RH SIDE (40%) SEAT / 5 or 7 PASSENGER MODELS – See page 3 for more information on 7 passenger models)

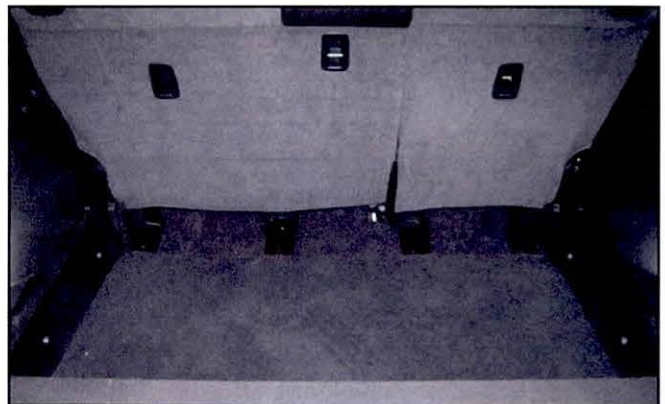
***NOTICE**

This service procedure applies only to vehicles with the RH (40%) 2nd row seat reclining mechanism not functioning properly due to a seat reclining handle which requires no effort to operate. This is likely caused by a disconnected cable in the seatback frame.

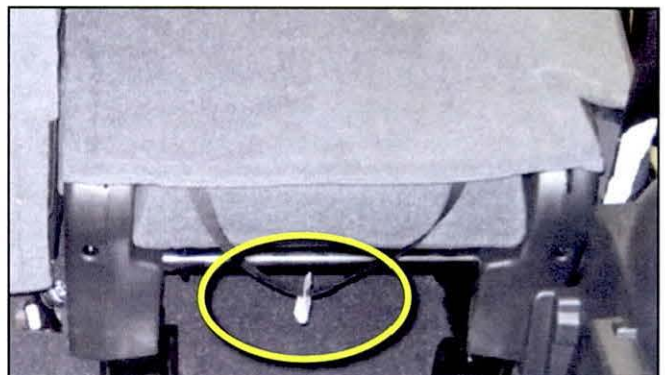
1. Operate the reclining handle to verify proper release of the seatback. If the handle requires little or no effort to operate and the seatback will not release, perform this service procedure to correct the concern.



2. Remove the luggage compartment and partition board.



3. Push/pull front of cover forward to release from mounting tab.



SUBJECT:

SECOND ROW SEAT INOPERATIVE OR DIFFICULT TO RELEASE

***NOTICE**

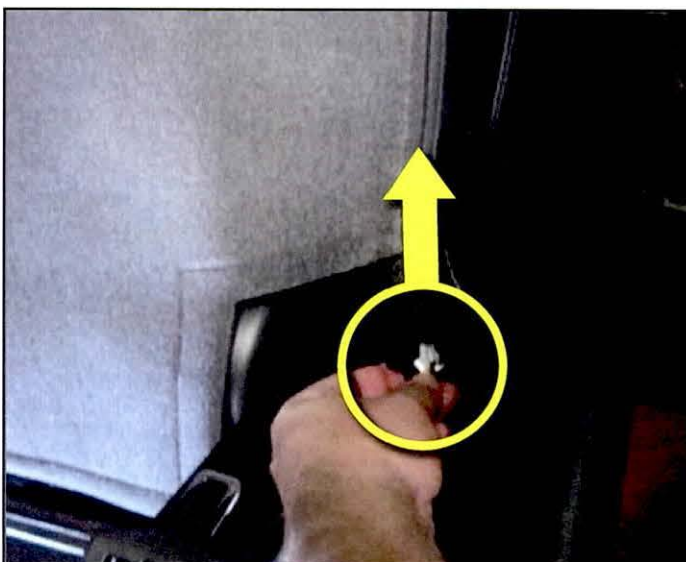
If performing this procedure on a 7 passenger Sorento model, remove two additional clips on the bottom of the seatback.



4. Locate and unzip the LH zipper tucked underneath the seatback covering.



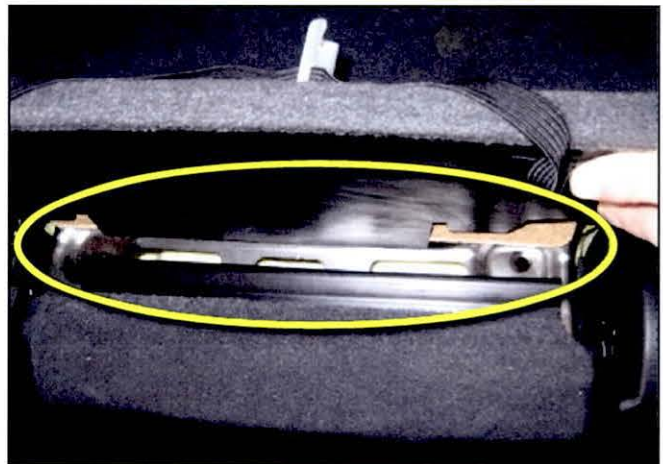
5. Locate and unzip the RH zipper tucked underneath the seatback covering.



SUBJECT:

SECOND ROW SEAT INOPERATIVE OR DIFFICULT TO RELEASE

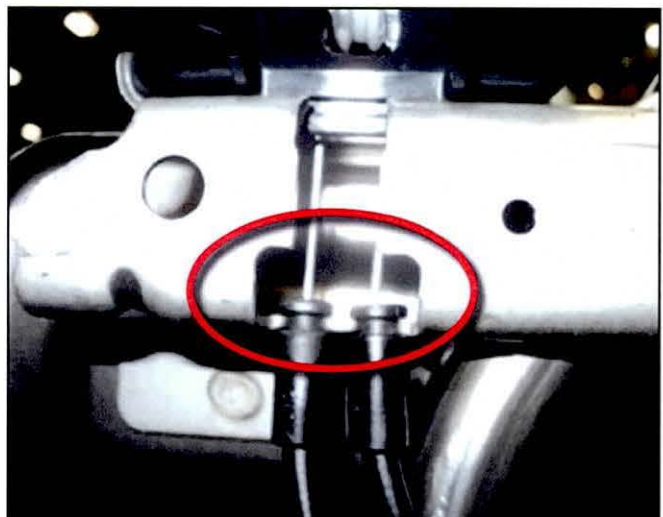
6. Lift up the rear seat covering and release the j-hook.



7. Lift seatback cushion to expose the reclining handle, cables and reclining mechanism.



8. Make sure the cable guides are properly seated in the retaining brackets on the seatback frame. Also, inspect the cables for damage. If a cable is damaged, replace it.

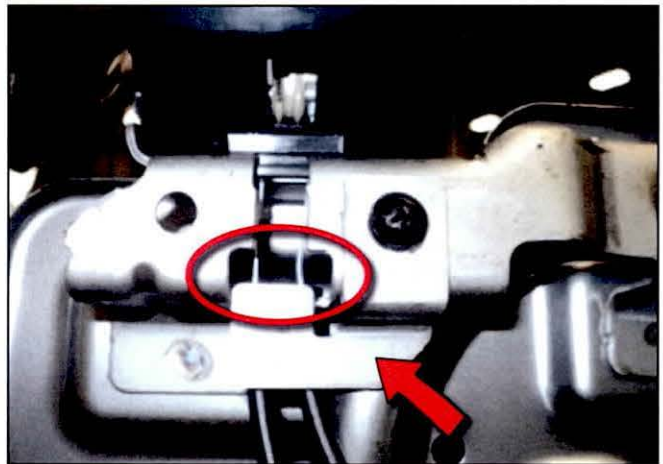


SUBJECT:

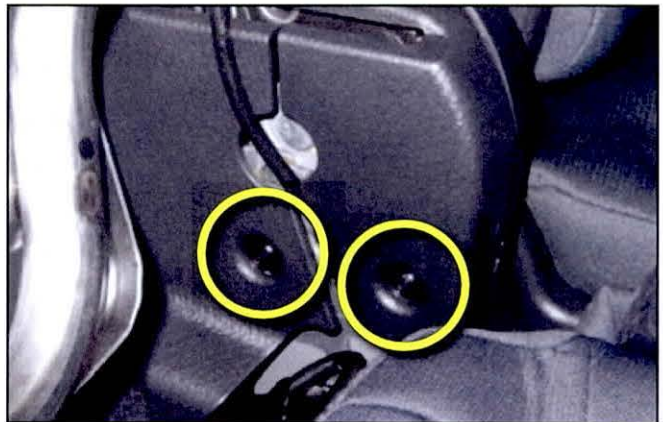
SECOND ROW SEAT INOPERATIVE OR DIFFICULT TO RELEASE

9. On vehicles produced on or after September 15, 2011, remove the bracket to ensure the cable guides are properly seated in the retaining brackets on the seatback frame. Also, inspect the cables for any sign of damage. If a cable is damaged, replace it.

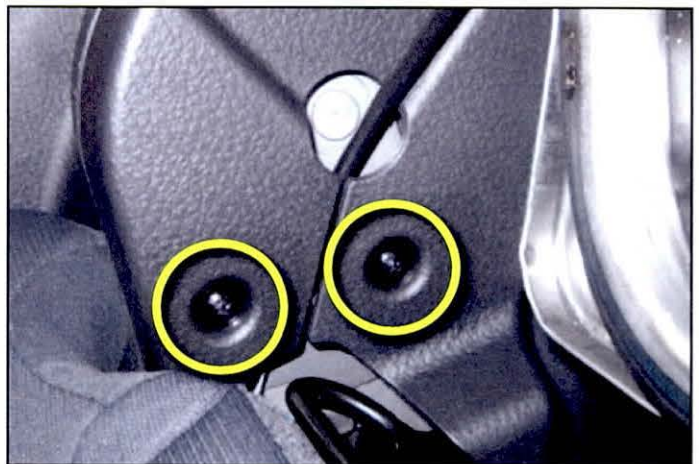
Re-install the bracket before proceeding to the next step.



10. Remove two screws securing the cover on the inboard seatback reclining mechanism.



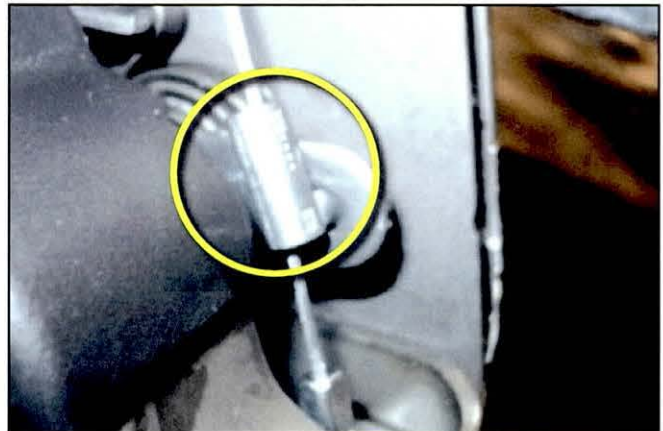
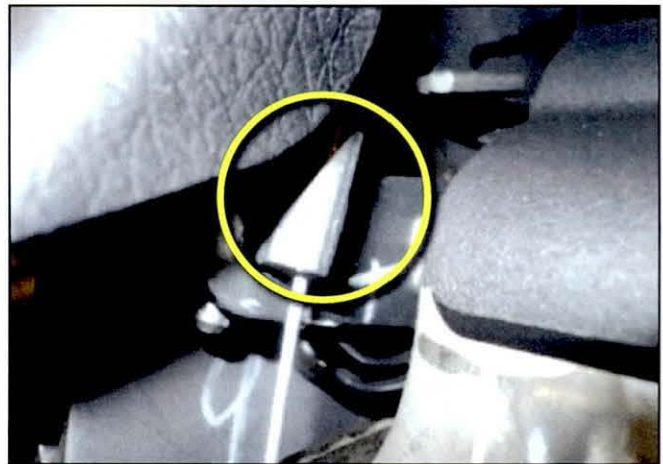
11. Remove two screws securing the cover on the outboard seatback reclining mechanism.



SUBJECT:

SECOND ROW SEAT INOPERATIVE OR DIFFICULT TO RELEASE

12. Inspect the seatback release cable for damage at the locations shown. If a cable is damaged, replace it.



13. Make sure the seatback release cable guide is properly seated in the retaining bracket. If the cable guide is disconnected, reinstall the cable guide in the bracket to resolve the concern.



14. Re-assembly is the reverse of disassembly.
15. Confirm proper operation.

SUBJECT:

SECOND ROW SEAT INOPERATIVE OR DIFFICULT TO RELEASE

SERVICE PROCEDURE 2 - NO TENSION ON RECLINING HANDLE (LH SIDE (60%) SEAT / 5 or 7 PASSENGER MODELS)

***NOTICE**

This service procedure applies only to vehicles with the LH (60%) 2nd row seat reclining mechanism not functioning properly and a seat reclining handle which requires no effort to operate. This is likely caused by a disconnected cable in the seatback frame.

1. Operate the reclining handle to verify proper release of the seatback. If the handle requires little or no effort to operate and the seatback will not fold down, perform this service procedure to correct the concern.



2. Remove both child seat anchor bezels using a non-marring trim removal tool (such as Snap-on® Part Number PBN5 or equivalent).



3. Remove the j-hook and hog retaining ring on the bottom of the LH seatback. Use pliers to remove the hog ring.

***NOTICE**

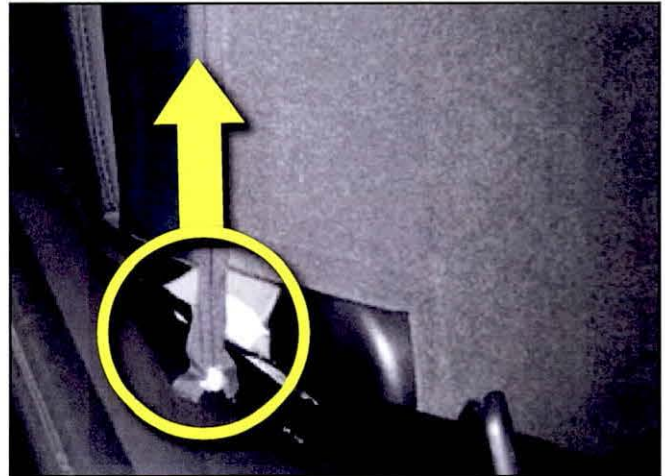
You may need to apply pressure to the seatback in order to free a jammed recliner mechanism.



SUBJECT:

SECOND ROW SEAT INOPERATIVE OR DIFFICULT TO RELEASE

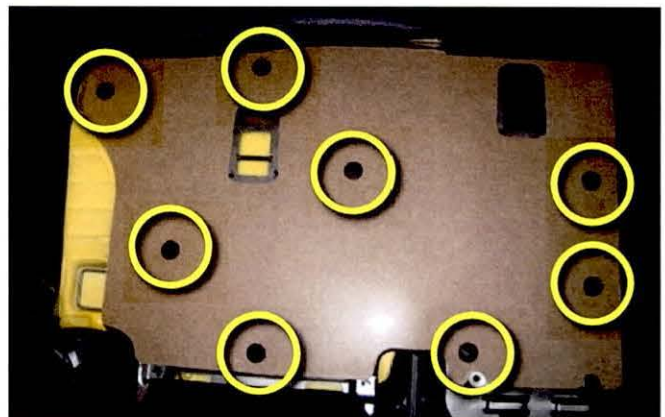
4. Locate and unzip the LH zipper tucked underneath the seatback covering.



5. Remove the RH side j-clips retaining the seatback covering.



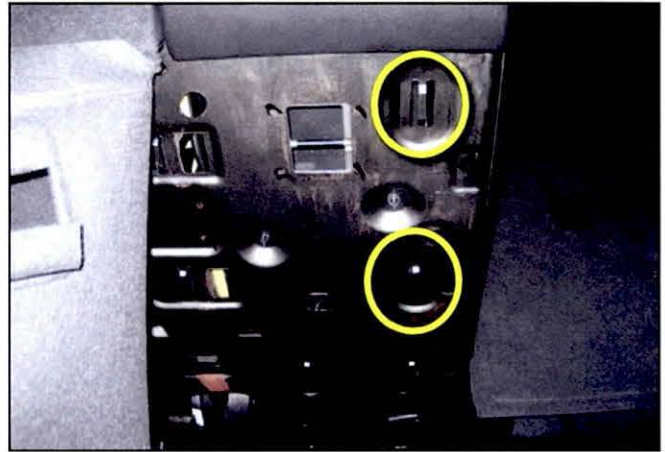
6. Lift the seatback trim material and remove the 8 clips retaining the seatback board. Do not pry against the seat back board while removing the retaining clips.



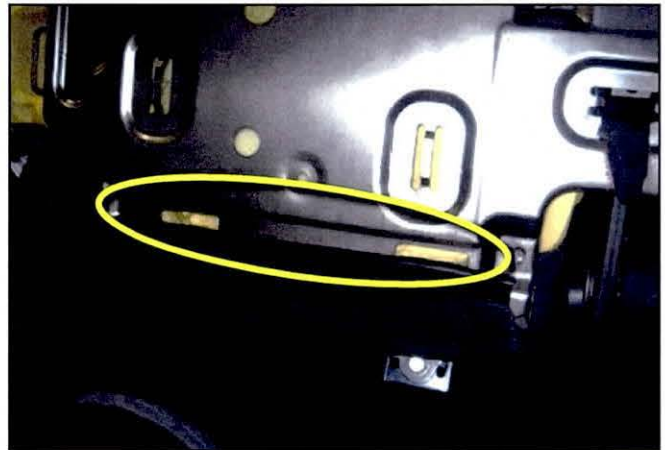
SUBJECT:

SECOND ROW SEAT INOPERATIVE OR DIFFICULT TO RELEASE

7. Remove three side j-hooks securing the seatback cushion to the seatback frame.



8. Remove the j-hook securing the bottom seat cushion covering.



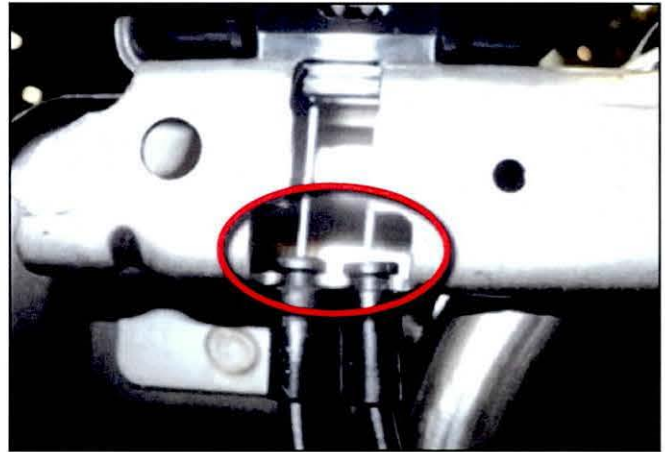
9. Lift seatback cushion to expose the reclining handle, cables and reclining mechanism.



SUBJECT:

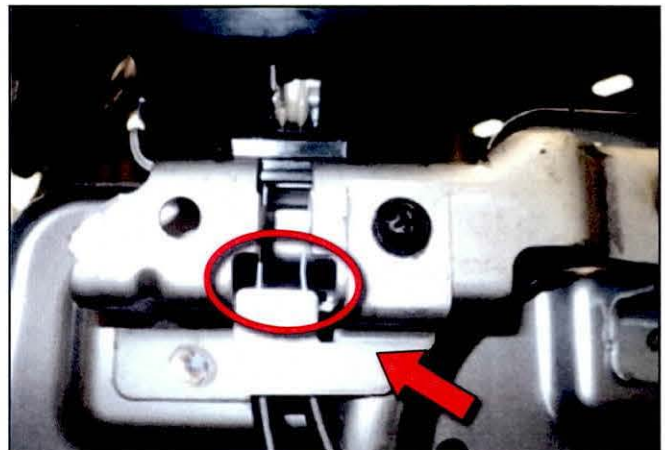
SECOND ROW SEAT INOPERATIVE OR DIFFICULT TO RELEASE

10. Make sure the cable guides are properly seated in the retaining brackets on the seatback frame. Also, inspect the cables for damage. If a cable is damaged, replace it.

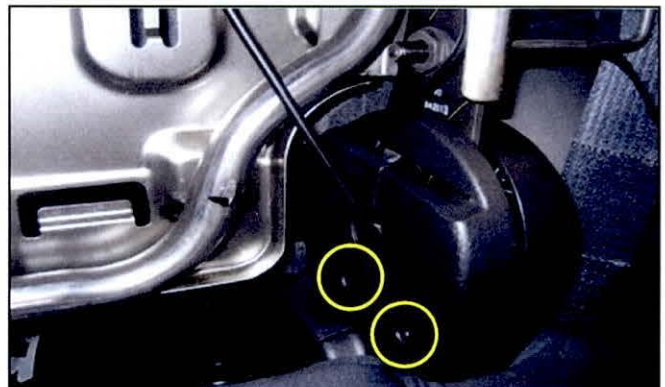


11. On vehicles produced on or after September 15, 2011, remove the bracket to ensure the cable guides are properly seated in the retaining brackets on the seatback frame. Also, inspect the cables for any sign of damage. If a cable is damaged, replace it.

Re-install the bracket before proceeding to the next step.



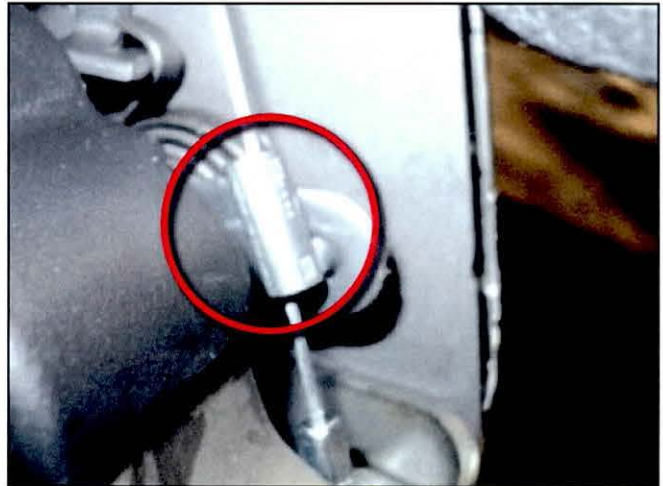
12. Remove two screws securing the cover on the outboard seatback recliner mechanism.



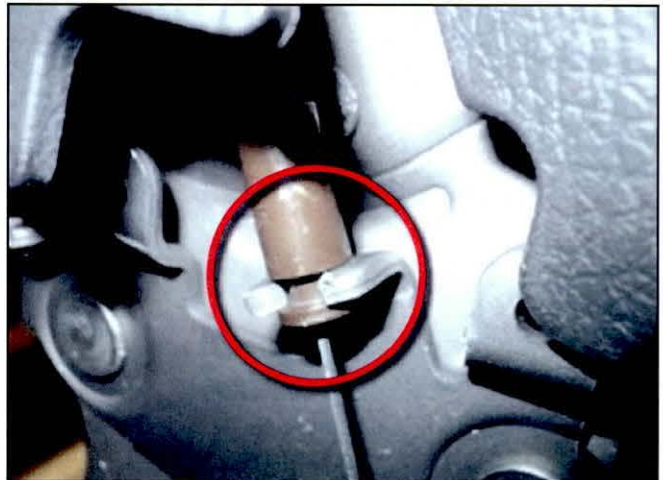
SUBJECT:

SECOND ROW SEAT INOPERATIVE OR DIFFICULT TO RELEASE

13. Inspect the seatback release cable for damage at the locations shown. If a cable is damaged, replace it.



14. Make sure the seatback release cable guide is properly seated in the retaining bracket. If the cable guide is found to have become disconnected, reinstall the cable guide into the bracket to resolve the concern.



15. Re-assembly is the reverse of disassembly.
16. Confirm proper operation.

SUBJECT:

SECOND ROW SEAT INOPERATIVE OR DIFFICULT TO RELEASE

SERVICE PROCEDURE 3 – EXCESS TENSION ON RECLINING HANDLE

***NOTICE**

This service procedure applies only to vehicles with the RH (40%) or LH (60%) 2nd row seatback reclining handles requiring an excessive amount of effort to operate.

1. Operate the seatback reclining handle to verify excessive effort is required.

***NOTICE**

You may need to apply pressure to the seatback in order to free a jammed recliner mechanism.



2. To correct the concern on the RH side (40%) of the 2nd row seat, replace both inboard and outboard reclining mechanisms. Refer to KGIS > Body > Seat & Power Seat > Rear Seat > Repair Procedures, for specific repair procedures.



3. To correct the concern on the LH side (60%) of the 2nd row seat, replace the inboard reclining mechanism. Refer to KGIS > Body > Seat & Power Seat > Rear Seat > Repair Procedures, for specific repair procedures.
4. Confirm proper operation.

SUBJECT: SECOND ROW SEAT INOPERATIVE OR DIFFICULT TO RELEASE

AFFECTED VEHICLE PRODUCTION RANGE:

Model	Production Date Range
Sorento (XMa)	From October 26, 2009 to November 5, 2012

WARRANTY CLAIM INFORMATION:

Claim Type	Causal P/N	Qty.	N Code	C Code	Repair Description	Labor Op Code	Op Time	Replacement Part No.	Qty
SERVICE PROCEDURE 1 & 2									
W	89547 1U250H9	0	N86	C10	Inspect and Re-Install 2nd Row Seat Cable (Right)	89330F00	0.6 M/H	N/A	0
W	89546 1U150H9	0	N86	C10	Inspect and Re-Install 2nd Row Seat Cable (Left)	89330F01	0.6 M/H	N/A	0
SERVICE PROCEDURE 1 & 2									
W	89547 1U250H9	0	N92	C15	2nd Row Seat Cable Replacement (Right)	89176R00	1.0 M/H	89547 1U251 H9 89547 1U251 J7 89547 1U251 VA	1
W	89546 1U150H9	0	N92	C15	2nd Row Seat Cable Replacement (Left)	89176R0B	1.0 M/H	89546 1U151 H9 89546 1U151 J7 89546 1U151 VA	1
SERVICE PROCEDURE 3									
W	89520 1U110	0	N92	C15	2nd Row Seat Recliner Replacement (Right)	89690R0R	1.2 M/H	89520 1U110 89620 2P210 89620 2P220	2
W	89620 2P010	0	N92	C15	2nd Row Seat Recliner Replacement (Left)	89690R00	1.5 M/H	89620-2P010	1