 <b>HYUNDAI</b>   NEW THINKING. NEW POSSIBILITIES.  <b>Technical Service Bulletin</b>	GROUP	NUMBER
	<b>AUTOMATIC TRANSMISSION</b>	<b>13-AT-006</b>
	DATE	MODEL
	<b>MARCH 2013</b>	Tucson (LM), Santa Fe (CM/AN/NC), Sonata (YF/YF HEV), Elantra (UD/MD/GD/JK), Accent (RB), Azera (TG/HG), Veloster Turbo (FS)
<b>SUBJECT:</b>	<b>AUTOMATIC TRANSAXLE (6-SPEED) ATF FLUID LEVEL CHECK</b>	

*This TSB supersedes TSB 11-AT-004 to include 2013 models*

**Description:** The following vehicles are equipped with a 6-speed automatic transmission. The ATF level can be checked by the following procedure:

**\* NOTE**

Use only ATF meeting the SP-IV specification approved by Hyundai. DO NOT use SP-III or other ATF which may result in degradation of shift quality or transaxle durability.

<b>Applicable Vehicles:</b>	<b>Model Years</b>	<b>Model</b>
	2010~	Tucson (LM) & Santa Fe (CM)
	2011~	Sonata (YF)/HEV, Elantra (UD/MD) & Azera (TG)
	2012~	Accent (RB), Azera (HG)
	2013~	Veloster Turbo (FS), Elantra Coupe (JK), Elantra GT (GD) and Santa Fe (AN/NC)

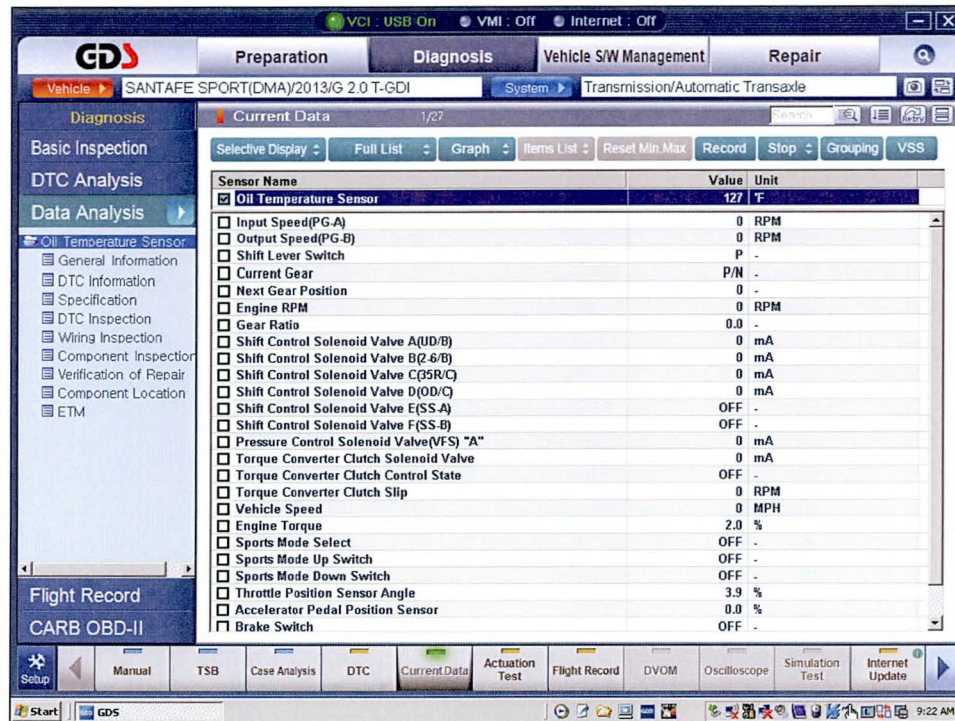
**PARTS INFORMATION:**

PART NAME	DESCRIPTION	PART NUMBER
Hyundai SPH-IV	SP-IV Automatic Transmission Fluid	00232-19045

**WARRANTY INFORMATION:** Normal warranty applies

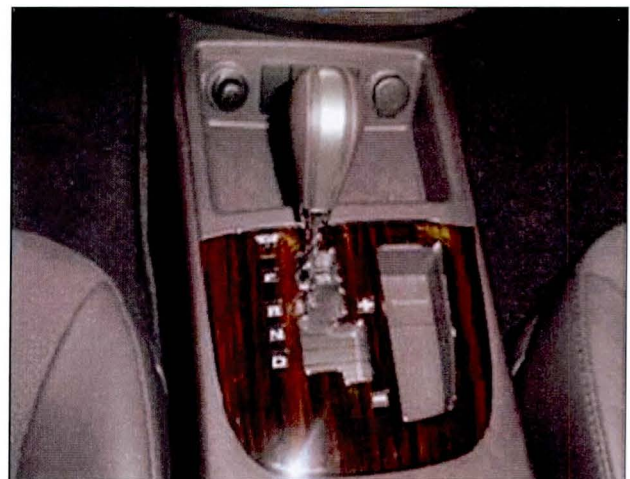
**SERVICE PROCEDURE:**

1. If the ATF has been completely drained, add approximately 5 quarts of SPH-IV ATF.
2. Attach a GDS and select:
  - Vehicle and A/T menu.
  - Current Data
  - Oil temperature sensor.



3. Drive the vehicle until the fluid temperature is at the low end of the range of 122~140°F (50~60°C).
4. Step on the brake and then shift into "R", "N" and "D" and back, pausing 2~3 seconds in each range. Repeat two times.

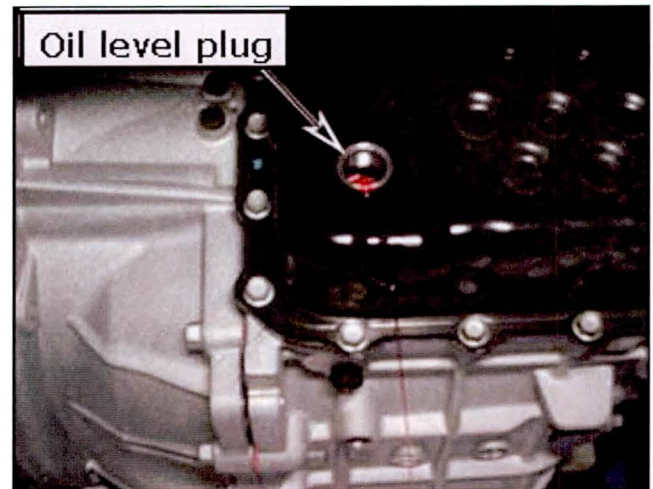
Move the shift lever to P, leave the engine running (Sonata Hybrid in "EV Ready" mode) and lift the vehicle on a hoist.



5. Remove the splash shield under the transmission.



6. Remove the oil level plug. The oil level is correct if ATF flows out in a thin steady stream. If no oil flow occurs, go to Step 7.



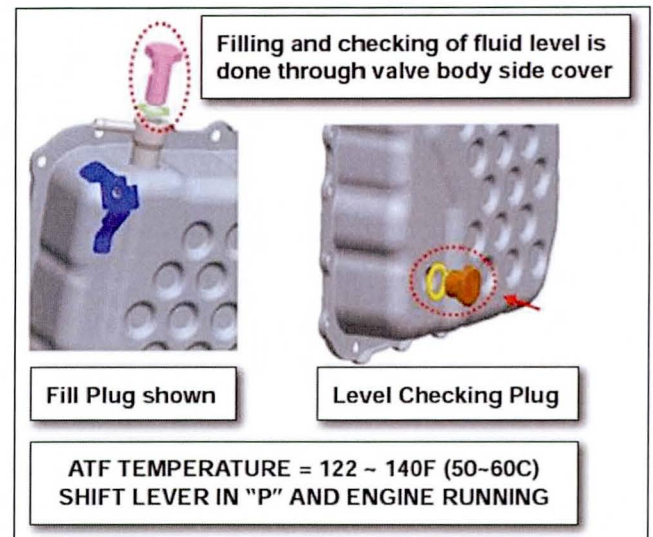
ATF Temperature = 122-140F (50~60C)  
Shift lever in "P" and engine running  
HEV in "EV Ready" mode

7. If no oil flow occurs, add SPH-IV ATF through the fill plug opening or use a suction gun to add ATF through the level checking plug. Reinstall the plug.

Start the engine and shift to Park. When the ATF is 122°F~140°F (50~60°C), remove the level checking plug. The level is correct when oil flows out of the level checking plug in a thin steady stream.

**\* NOTE**

Collect and dispose of any excess fluid in accordance with local regulation.



8. Reinstall the overflow plug and torque to specification.

Steel pan: Torque: 25~32 lb-ft (3.5~4.5 kgf.m)

Plastic pan: Turn plug past detent.