



Technical Service Bulletin

GROUP ACCESSORY	NUMBER 13-AC-002
DATE NOVEMBER 2013	MODEL SANTA FE (AN/NC)

SUBJECT


CROSSBAR FELT APPLICATION (RATTLE NOISE) – SERVICE PROCEDURE

Description: Some Santa Fe vehicles may exhibit a slight rattle noise coming from the Roof Rack Crossbars while driving. This bulletin describes the procedure to install felt cloth tape to the RH Side Support Bracket on the front and rear crossbars.



Applicable Vehicles: 2013~ MY Santa Fe Sport (AN) and Santa Fe (NC) equipped with Accessory Roof Rack Crossbars (not applicable to vehicles equipped with panoramic sunroof)

Parts Information:

Part Name	Part Number	QTY	DESCRIPTION	
FELT CLOTH TAPE, NON-WOVEN	68370-4B000	2		Dimensions 15mm x 25 mm

This item is an available replacement part from the Hyundai Squeak and Rattle Repair Kit (P/N J-43980-HMA) and can be ordered through <https://hyundai.service-solutions.com>

Warranty Information:

Model	Op Code	Operation	Op Time	Causal Part #	Nature Code	Cause Code
Santa Fe	A0302R05	Crossbar Kit Rattle Repair	0.3 M/H	4Z021-ADU01	N29	C90

Circulate To: General Manager, Service Manager, Parts Manager, Warranty Manager, Service Advisors, Technicians, Body Shop Manager, Fleet Repair

SUBJECT: CROSSBAR FELT APPLICATION (RATTLE NOISE) - SERVICE PROCEDURE

Service Procedure:

1. Locate the notch in the cap on the ends of each crossbar. Insert a flat-edged tool into the notch and press inward against the crossbar support. Carefully pry upward to open the cap and release the locking tabs from the support.



CAUTION

Protect the roof of the vehicle to prevent scratches or damage. Use a step stool to access the roof of the vehicle if necessary.



2. Using a T30 torx driver, loosen the screws sufficiently to allow the clamp to be removed from the vehicle side rail hole. (Do not loosen the screws completely.)

Repeat this step on the left and right sides to remove both the front and rear crossbars.



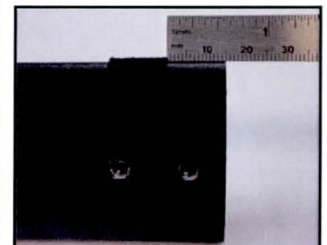
Loosen the screws just enough to remove the crossbars from the side rail

3. Identify the slotted side of the front crossbar (front crossbar is longer and the slotted side is marked "RH"). Using a T25 Torx driver, remove the two screws holding the RH Support.

Slide the RH Support off the end of the crossbar tube.



4. Clean off any dirt or debris from the crossbar tube. Apply (1) 68370-4B000 Felt Cloth Tape around the trailing edge of the crossbar tube as shown, approximately 15mm [0.59"] from the edge of the crossbar.

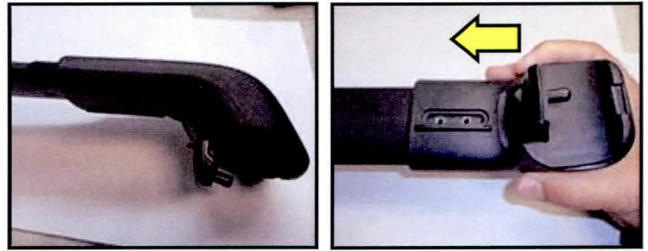


SUBJECT: CROSSBAR FELT APPLICATION (RATTLE NOISE) - SERVICE PROCEDURE

5. Carefully reassemble the RH Support Bracket back onto the crossbar tube, making sure that the FELT CLOTH TAPE does not peel off or become damaged.

*** NOTE**

The fit between the crossbar and the RH Support Bracket should be snug.



6. Tighten the RH Support screws using a torque wrench and a T25 Torx driver.

*** NOTE**

Tightening Torque:

- 30 – 40 in-lbs. (3.4 – 4.5 N-m)



Verify that the RH Support is still able to slide somewhat in order to adjust crossbar length when installing onto the vehicle.

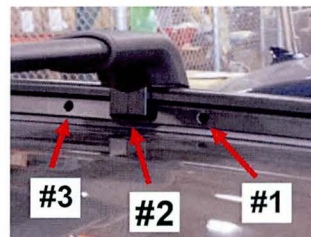
Repeat steps 3 through 6 for the RH Support of the rear crossbar.

Installation Procedure:

7. Identify the front crossbar, (longer of the two). Orient the crossbar onto the vehicle according to the markings underneath the support bracket which indicate FRONT and RH or LH side. Carefully position the crossbar clamp pins into the #2 hole locations on the side rails of the vehicle.

Adjust the length and fit of the crossbar as needed to install the support onto the side rail.

- ✓ Verify that the raised lip in front of the screw slot on the underside of the RH Support Bracket is toward the FRONT of the vehicle



FRONT BAR
Install in #2 hole location

When installed, wind trip is facing towards the FRONT of the vehicle



SUBJECT: CROSSBAR FELT APPLICATION (RATTLE NOISE) - SERVICE PROCEDURE

8. Orient the rear crossbar in the same manner as the front crossbar onto the vehicle. Carefully position the crossbar clamp pins into the #4 hole locations on the side rails of the vehicle.

Adjust the length and fit of the crossbar as needed to install the support onto the side rail.

- ✓ Verify that the raised lip in front of the screw slot on the underside of the RH Support Bracket is toward the FRONT of the vehicle



REAR BAR
Install in #4 hole location

When installed, raised bump is facing towards FRONT of vehicle



9. With the crossbar pins properly installed onto the side rail, tighten the clamps using a T30 Torx driver.

★ NOTE

Tightening Torque:

- 65 – 75 in-lbs. (7.5 – 8.5 N-m)



- ✓ Grasp the crossbar and check for any play.

Reinstall the caps making sure to align the tabs with the holes in the support.

★ NOTE

Accessory installation instructions are available at www.hmaservice.com under the “Technical Training” tab, click on “Accessory Info”.