



Connection offline

Technical product information

Topic	Continental range power boot close switch - correct diagnosis
Market area	Worldwide Bentley (1WBE)
Brand	Bentley
Transaction No.	2033745/1
Level	EH
Status	Approval
Release date	

New customer code

Object of complaint	Complaint type	Position
Body fixtures and fittings -> Door, closures operation -> Electrically close rear lid	functionality -> without function / defect	
Body fixtures and fittings -> Door, closures operation -> Close rear lid	functionality -> cannot be closed	
Body fixtures and fittings -> Doors, closures	functionality	
Body fixtures and fittings -> Closures	Noise, vibration	
Body fixtures and fittings -> Door, closures operation	functionality	
Body fixtures and fittings -> Closures	dimensional accuracy	

New workshop code

Object of complaint	Complaint type	Position
Body fixtures and fittings -> Closures -> Rear lid closing switch (rear lid)	functionality -> without function / defect	
Body fixtures and fittings -> Closures -> Rear lid	Noise, vibration -> noise	
Body fixtures and fittings -> Closures -> Rear lid	functionality -> incorrectly adjusted	

Vehicle data

Continental Range

Sales types

Type	MY	Brand	Designation	Engine code	Gearbox code	Final drive code
39**	2012	E		*	*	*
39**	2013	E		*	*	*
39**	2014	E		*	*	*
39**	2015	E		*	*	*
3W**	2004	E		*	*	*
3W**	2005	E		*	*	*
3W**	2006	E		*	*	*

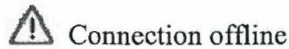
3W**	2007	E		*	*	*
3W**	2008	E		*	*	*
3W**	2009	E		*	*	*
3W**	2010	E		*	*	*
3W**	2011	E		*	*	*
3W**	2012	E		*	*	*
3W**	2013	E		*	*	*

Chassis numbers

Manufacturer	Filler	Type	Filler	MY	Factory	From	To	Prod from	Prod to
SCB	*	3W	*	*	*	020001	999999		
SCB	*	ZA	*	*	*	020001	999999		

Documents

Document name
master.xml



Technical product information

Transaction No.: 2033745/1

Continental range power boot close switch - correct diagnosis

Customer statement / workshop findings

Boot lid does not power close when the boot close switch (located on the inside of the boot lid) is pressed.

Technical background

In the event the power boot does not close when the boot close switch is pressed please follow the Measure section of this TPI to ensure the boot lid close switch is faulty before replacing

CAUTION: It is imperative that no objects of any description are left near the mechanism or hinges when the power boot is in operation, should the operative need to stop the boot lid from closing during the power close cycle re-press the close switch

Production change

-

Measure

IMPORTANT: When disconnecting electrical connections, switch off all electrical consumers, switch off ignition and remove ignition key

1. Press the boot close switch to confirm the switch does not close the boot. **NOTE:** Should the boot lid start to close please still commence with this TPI to test the full serviceability of the switch as the fault within the switch may be intermittent.
2. Remove the boot lid latch cover Refer to Workshop Manual Rep.Gr 70 - Boot lid latch cover panel - To remove and fit
3. Remove the switch from the cover panel by pressing in the two retaining clips inboard and remove the switch from the cover panel (Figure 1)

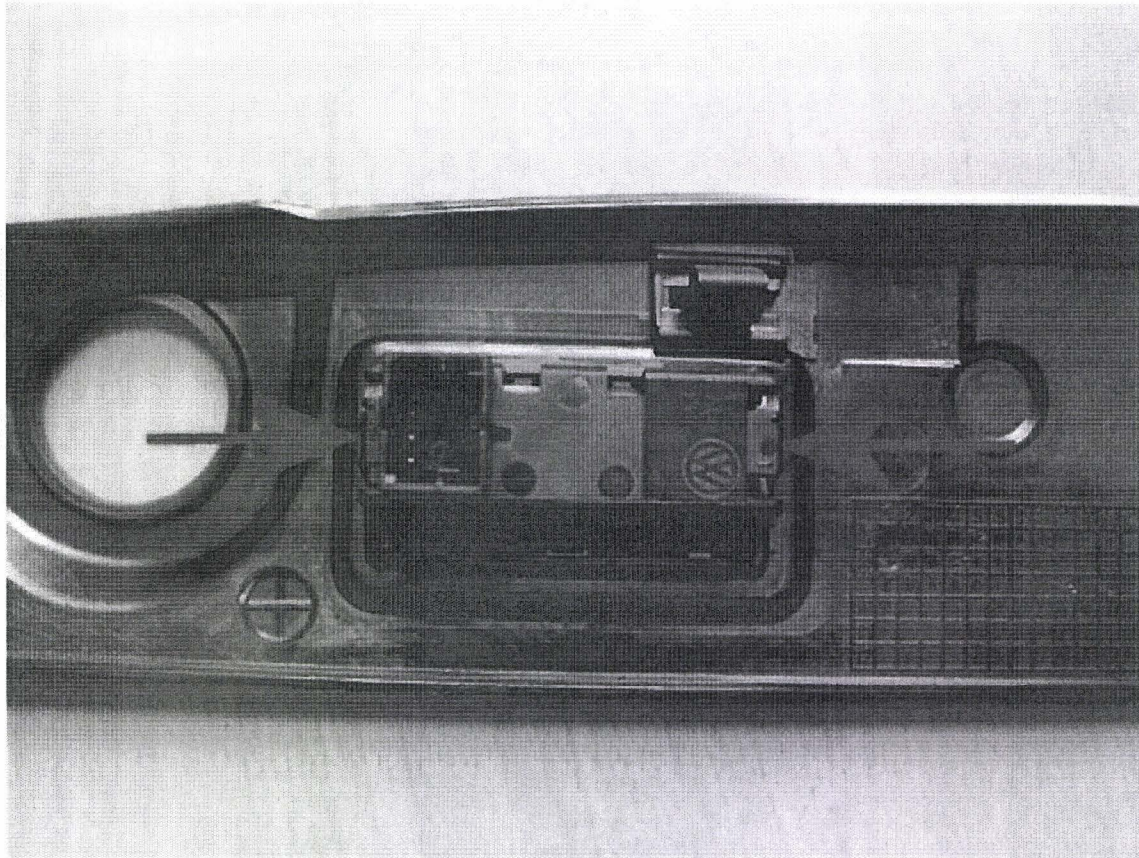


Figure 1

4.Reconnect the switch to the electrical connection (Figure 2) allowing the switch to hang in free air

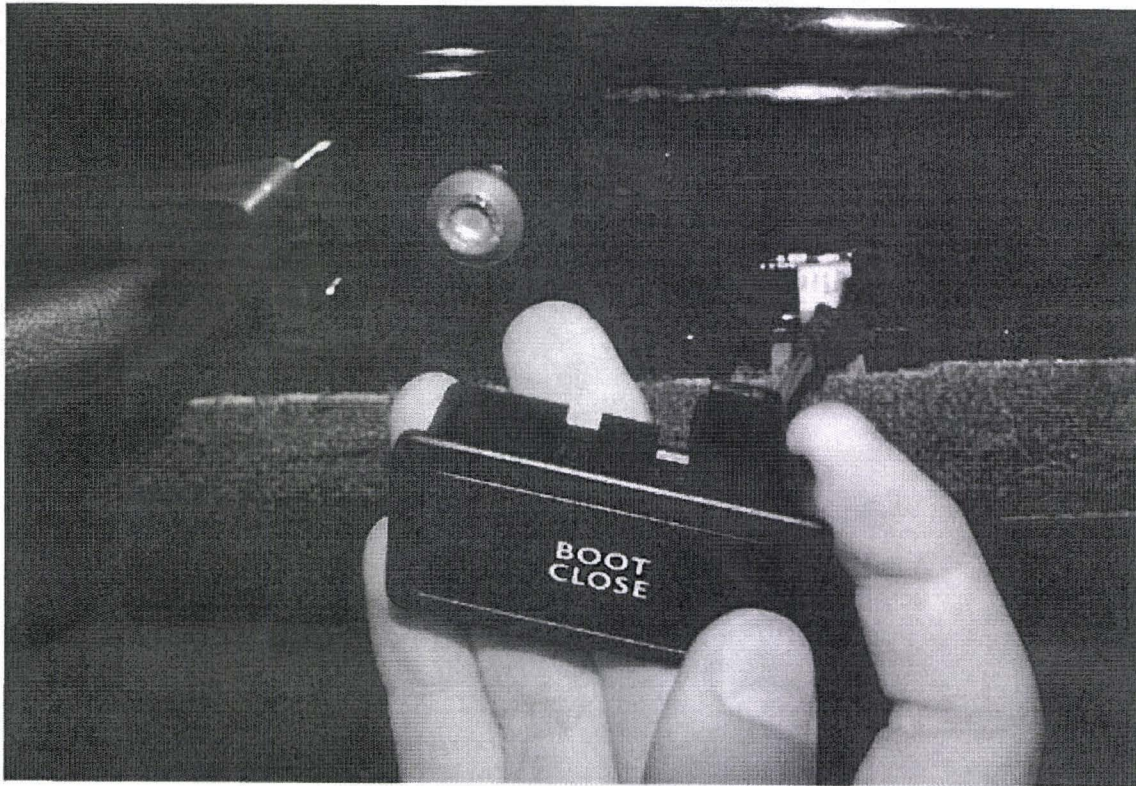


Figure 2

-With the boot close switch hanging in free air press the switch to check if the boot lid starts to close, should this be the case and the boot lid starts to close the switch is serviceable, you should now proceed with procedure 6 **NOTE:** should the boot not start to close proceed to procedure 5

5.The resistance of the switch must now be measured and recorded using a suitable multimeter by following the procedures below

- Select Ω (Ohms) on the multimeter

- Measure the resistance between pins 2 and 3 (Figure 3) The button on the boot close switch must be pressed and held in otherwise a correct reading will not be obtained

IMPORTANT: The measurement should now be recorded in the warranty claim comments box when claiming for a new switch.

The resistance for a fully serviceable switch when operated (pressed) is 0.2 Ohms

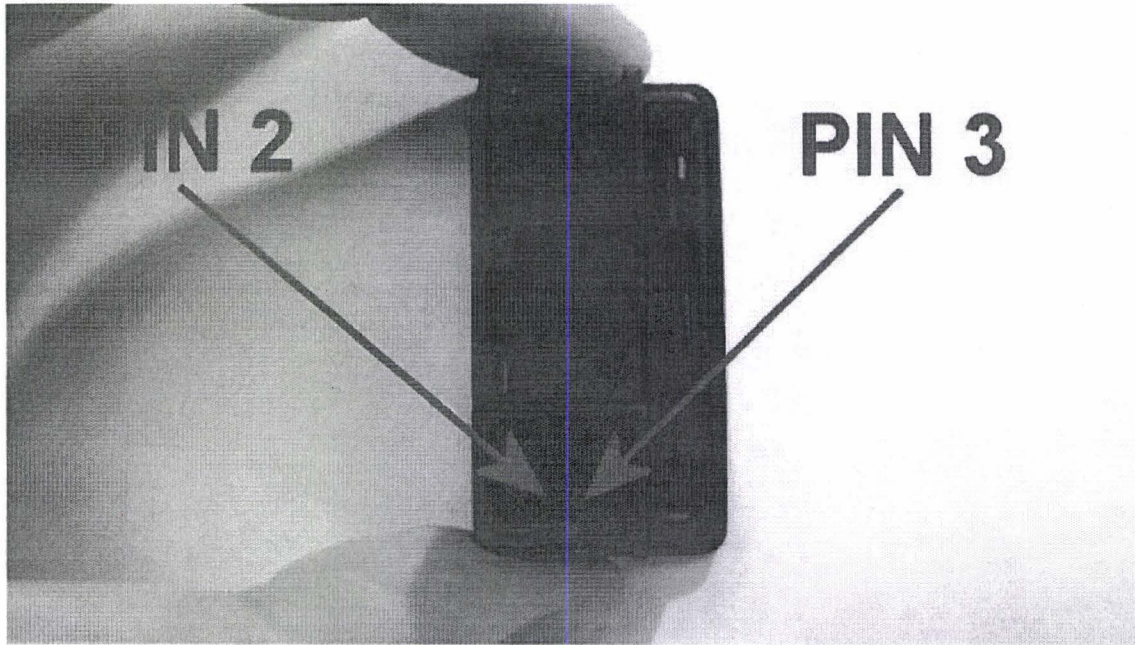


Figure 3

6. Before refitting the existing or new switch it is essential that the switch fits into the cover without any excessive resistance, should there be any burrs or jagged edges around the switch aperture should be carefully smoothed away using a fine sandpaper taking care not to enlarge the aperture (Figure 4)

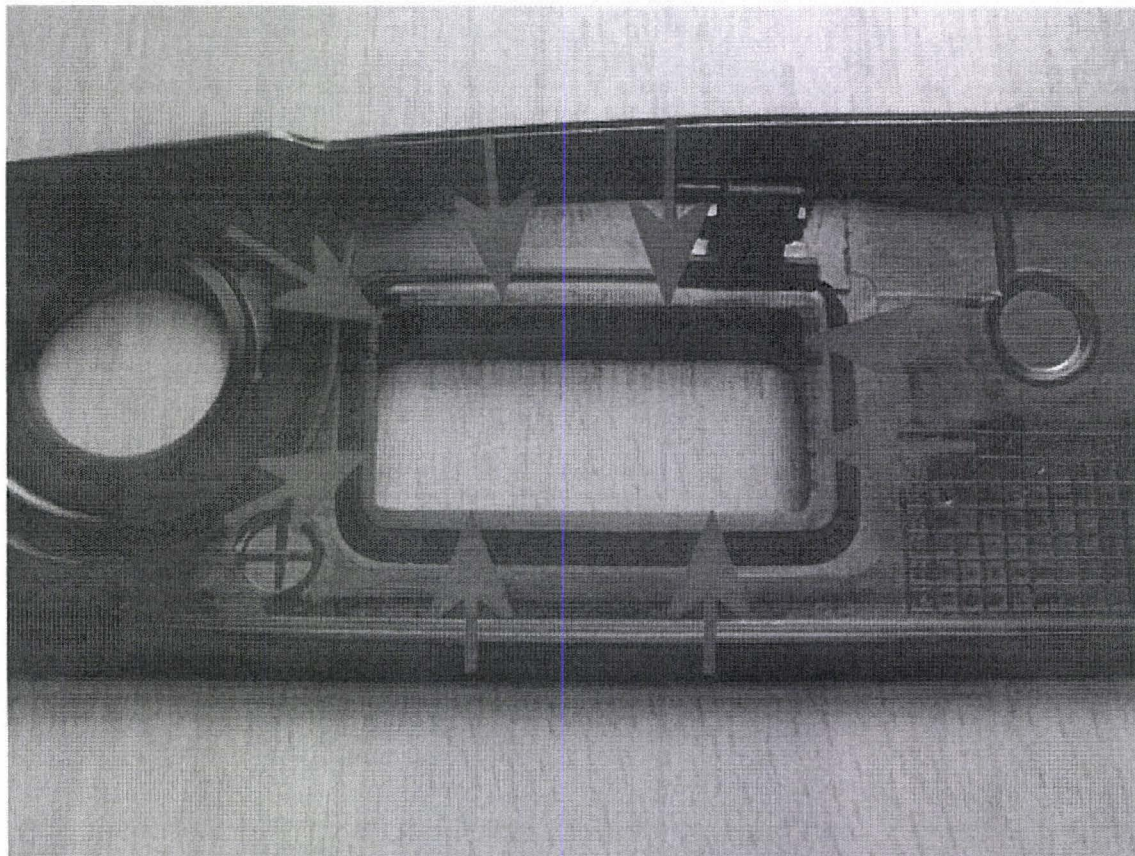


Figure 4

7. Refit the switch into the aperture ensuring correct orientation and the two clips are fully locked into position

-Check that the latch cover clips are centrally positioned before refitting the latch cover (Figure 5)

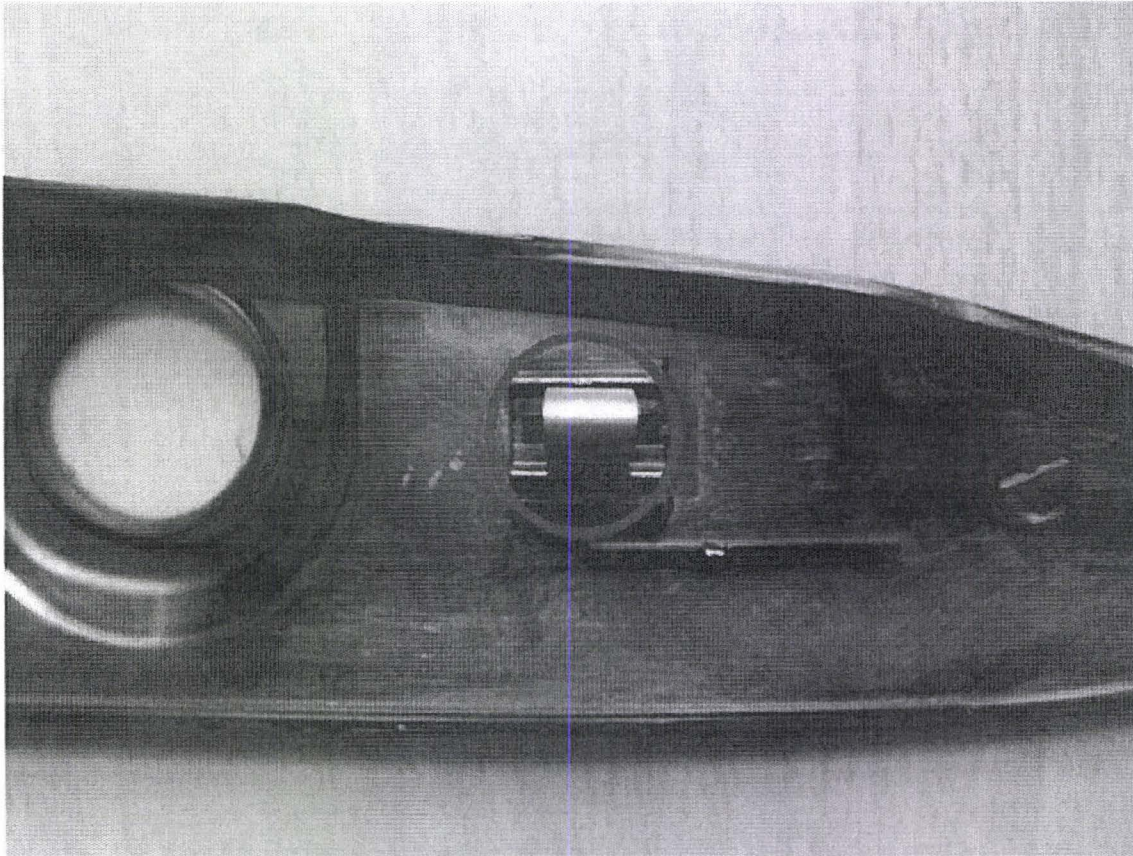


Figure 5

8. Refit the boot lid latch cover Refer to Workshop Manual Rep.Gr 70 - Boot lid latch cover panel - To remove and fit

9. Press the boot close switch to confirm full operation

Warranty accounting instructions

Please Note: Normal warranty policies are applicable

Warranty Type	910 or 110
Labour operation code	55 82 01 03
Damage Service Number	55 82
Damage Code	00 17
Time	20 Time units